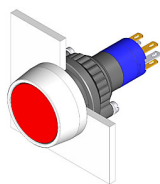


EAO – Your Expert Partner for Human Machine Interfaces

14-131.022 - Illuminated pushbutton actuator

14-131.022 - Illuminated pushbutton actuator



Attention: The preview is based on a sample product. This can differ from your current configuration.

Mounting

Mounting cut-out	Ø 22.5 mm
Design	raised

Other Attributes

Weight	0.013 kg
Diode 1N4007	no value

IP-Rating

Front protection	IP 67
------------------	-------

Connection Method

Terminal	Solder 2.8 x 0.5 mm
----------	---------------------

Actuator

Switching action	Momentary
------------------	-----------

Switching element

Switching system	Snap-action switching element
Switching current	5 A
Contacts	1 NC + 1 NO
Contact material	Gold
Switching voltage	250 V AC

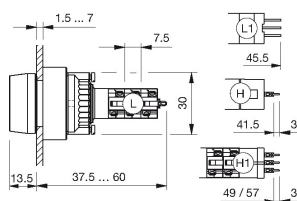
Function

Illuminated pushbutton

EAO – Your Expert Partner for Human Machine Interfaces

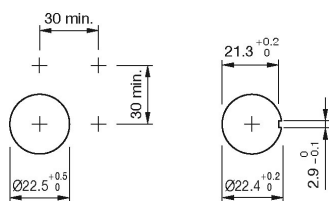
14-131.022 - Illuminated pushbutton actuator

Dimensions

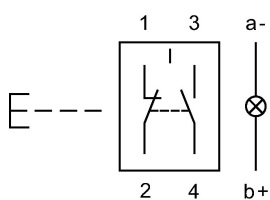


L1 = Solder terminal 2.8 x 0.5 mm

Mounting cut-outs



Wiring diagram



Legend

Contacts: NC = Normally closed, NO = Normally open
Switching action: B = Momentary