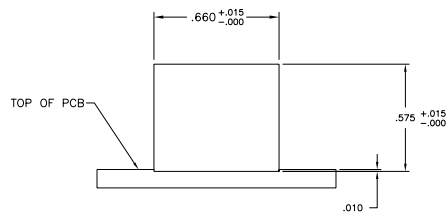
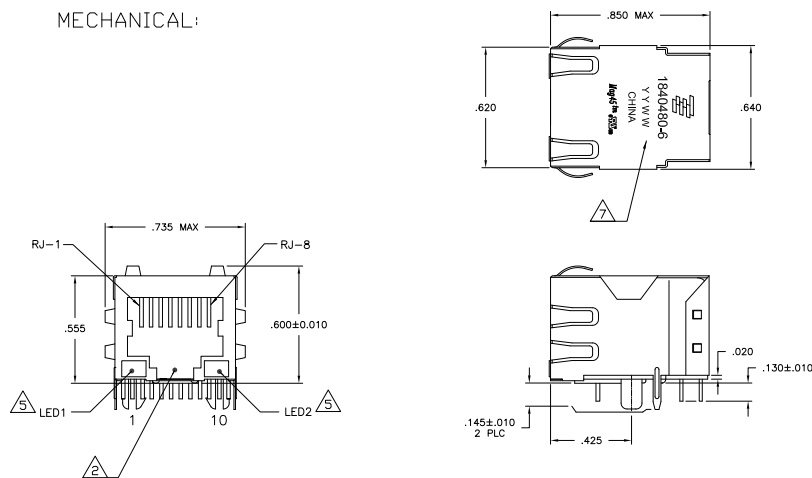


MECHANICAL:

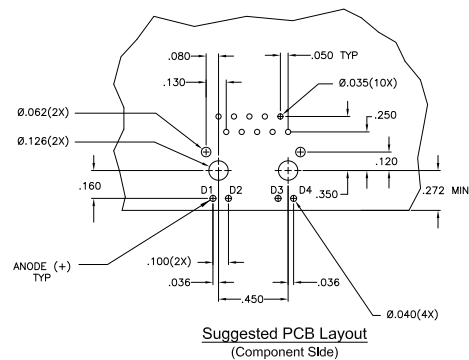
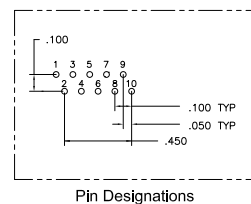
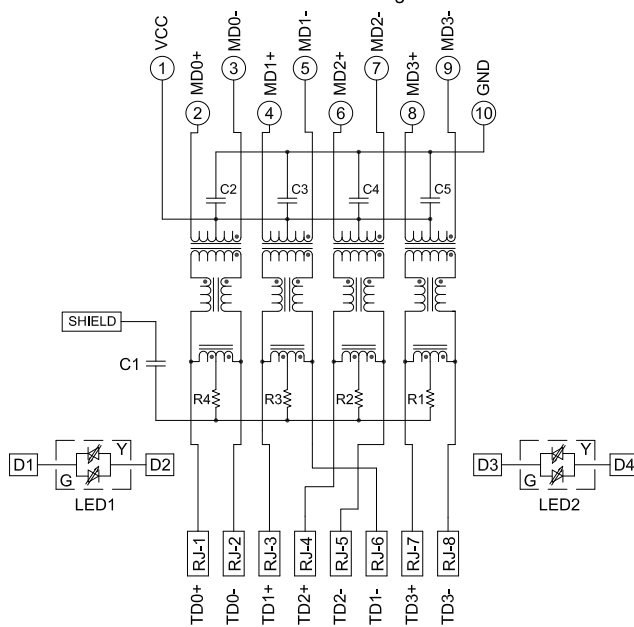


- MATERIALS:**
- HOUSING - THERMOPLASTIC PA46 TE250F6 POLYESTER FLAMMABILITY RATING UL 94V-0.
 - SHIELD - .010" THICK, C26800 BRASS PREPLATED WITH 30μINCH SEMI-BRIGHT NICKEL. SOLDER TABS POST DIPPED WITH 100μINCH MIN SAC SOLDER.
 - MOD JACK CONTACTS - 0.0157 X 0.018" PHOSPHOR BRONZE, 50μINCH MIN OVERALL NICKEL UNDERPLATE, WITH SELECT 50μINCH MIN HARD GOLD FINISH PLATE SOLDER TAILS WITH 100μINCH MIN MATTE TIN AND/OR SAC SOLDER DIP.
 - LIGHT EMITTING DIODE(LED) - DIFFUSED EPOXY LENS, .020" x .020" CARBON STEEL WIREFRAME LEADS PRE-PLATED WITH 80μINCH SILVER OVER 40μINCH NICKEL UNDERPLATE OVER 40μINCH COPPER UNDERPLATE. POST-PLATED WITH 100μINCH MIN MATTE TIN AND/OR SAC SOLDER DIP OR PURE TIN SOLDER DIP.
- RJ45 JACK CAVITY CONFORMS TO FCC RULES AND REGULATIONS PART 68, SUB PART F.**
- MAGNETICS**
- APPLICATION: 10/100/1000 BASE-T
 - IMPEDANCE: 100 OHMS
 - TURNS RATIO (CHIP CABLE): 1:1 ALL FOUR PAIRS
 - OPEN CIRCUIT INDUCTANCE (OCL): 350nH MIN @100MHz, 0.1VRMS, 8mA DC BIAS FROM 0° TO 70°; ALL FOUR PAIRS
 - ALL FOUR PAIRS BI-DIRECTIONAL
 - PERFORMANCE @ 25°C:
 - INSERTION LOSS (IL): 1.1dB MAX FROM 0.5MHz TO 100MHz
 - RETURN LOSS (RL): 10dB MIN FROM 0.5MHz TO 4.0MHz
 - 12-20LOG(I/80dB) MIN FROM 4.0MHz TO 100MHz
 - CROSSTALK ATTENUATION: 35dB MIN FROM 0.5MHz TO 4.0MHz
 - 33-20LOG(I/50dB) MIN FROM 4.0MHz TO 100MHz
 - COMMON MODE REJECTION RATIO (CMRR): 30dB MIN FROM 0.5MHz TO 100MHz
 - ISOLATION VOLTAGE: 2250VDC (MAX) FOR 60 SECONDS WITH A RISE TIME OF 500V/SEC.
- OPERATING TEMPERATURE: FROM 0°C TO +70°C.**
- LEDS WITHOUT BUILT-IN RESISTOR**
- LEDs ARE DRIVEN WITH CONSTANT CURRENT AT APPROX 20 mA
- LED COLOR: DOMINANT WAVELENGTH (AD): GREEN 568 nm TYP @ IF=20 mA
- FORWARD VOLTAGE (VF): GREEN 2.2V TYP @ IF=20 mA
- DOMINANT WAVELENGTH (AD): YELLOW 588 nm TYP @ IF=20 mA
- FORWARD VOLTAGE (VF): YELLOW 2.1V TYP @ IF=20 mA
- INDICATED MAGNETIC CONNECTIONS ARE SYMMETRICAL TO SUPPORT AUTO-MDI/MDIX.**
- TYCO ELECTRONICS LOGO, PART NUMBER, DATE CODE, COUNTRY OF ORIGIN AND AGENCY APPROVAL MARKING IN APPROXIMATE LOCATION SHOWN.**
- THE PART IS COMPLIANT TO BOTH WAVE SOLDERING PROCESS, PREHEAT TEMPERATURE IS 150°C ABOVE, 120 SECONDS TO 180 SECONDS, PEAK SOLDERING TEMPERATURE IS 265 °C MAX, 10 SECONDS MAX; AND IR REFLOW SOLDERING PROCESS, PEAK SOLDERING TEMPERATURE 260°C MAX DURATION TIME 10 SECONDS MAX, OVER 230 °C WITHIN 40 SECONDS TO 60 SECONDS.**

GREEN/YELLOW		GREEN/YELLOW	1840480-6
LED1		LED2	PART NUMBER
TYCO ELECTRONICS CORPORATION Changshu, China			
THIS DRAWING IS A CONTROLLED DOCUMENT.		1X1 MAG45(TM), 40G-P1 GIGABIT ETHERNET SCHEMATIC (10 PIN FOOTPRINT), 40GSP1 SERIES MAGNETIC CIRCUIT, SHIELDED, WITH LEDS	
DRAWN BY: 108-104004		DATE: 10/27/2015	
CHECKED BY: 108-104004		DATE: 10/27/2015	
APPROVED BY: 108-104004		DATE: 10/27/2015	
CUSTOMER DRAWING		A100779G-1840480	
SCALE: 1:1		SHEET 1 OF 2	

ELECTRICAL:

4G05P1 Series GIGABIT Magnetic Circuit



C1 = 1000 pF, 2kV CAPACITOR
 R1-R4 = 75 OHMS, 1/16 W RESISTORS
 C2-C5 = 0.1uF, 50V, X7R CAPACITORS

THIS DRAWING IS A CONTROLLED DOCUMENT.		10/20/2015 APPROVED DATE 10/20/2015 DESIGNED BY DESIGNED BY DATE 10/20/2015 CHECKED BY CHECKED BY DATE 10/20/2015 DRAWN BY DRAWN BY DATE 10/20/2015 REVISIONS REVISIONS DATE 10/20/2015 REV DATE DESCRIPTION BY		Tyco Electronics Tyco Electronics Corporation CHANGI, CHINA	
DIMENSIONS WORKS 					