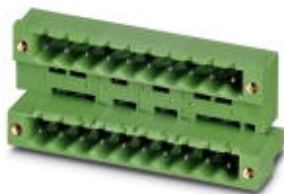


## Base strip - MDSTB 2,5/ 2-GF - 1846690

Please be informed that the data shown in this PDF Document is generated from our Online Catalog. Please find the complete data in the user's documentation. Our General Terms of Use for Downloads are valid (<http://phoenixcontact.com/download>)



Header, nominal current: 10 A, rated voltage (III/2): 320 V, number of positions: 2, pitch: 5 mm, Color: green, Contact surface: Tin, mounting: Wave soldering, The article can be aligned to create different nos. of positions! In combination with MVSTB or FKCV plug components, both an MVSTBW (or FKCVW) and an MVSTBR plug (or FKCVR) must be used. Combination with TMSTBP plug components is not possible!


The figure shows a 10-pos. version with 20 contacts

### Why buy this product

- ✓ Maximum flexibility when it comes to device design – one header for connectors with different connection technologies
- ✓ Easy PCB replacement thanks to plug-in modules
- ✓ Well-known mounting principle allows worldwide use
- ✓ Conductor connection on several levels enables higher contact density



### Key Commercial Data

|                                      |   |
|--------------------------------------|---|
| Packing unit                         | 1 STK   |
| GTIN                                 | <br>4 017918 183752 |
| GTIN                                 | 4017918183752   |
| Weight per Piece (excluding packing) | 7.600 g   |
| Custom tariff number                 | 85366930  |
| Country of origin                    | Germany   |

### Technical data

#### Dimensions

|                       |          |
|-----------------------|----------|
| Length                | 22.1 mm  |
| Pitch                 | 5 mm     |
| Dimension a           | 5.00 mm  |
| Width                 | 20.00 mm |
| Constructional height | 23.7 mm  |

## Base strip - MDSTB 2,5/ 2-GF - 1846690

### Technical data

#### Dimensions

|                          |          |
|--------------------------|----------|
| Height                   | 26.9 mm  |
| Length of the solder pin | 3.2 mm   |
| Pin dimensions           | 1 x 1 mm |
| Hole diameter            | 1.4 mm   |

#### General

|  |                  |
|--|------------------|
| Range of articles                      | MDSTB 2,5/...-GF |
| Insulating material group              | IIIa             |
| Rated surge voltage (III/3)            | 4 kV             |
| Rated surge voltage (III/2)            | 4 kV             |
| Rated surge voltage (II/2)             | 4 kV             |
| Rated voltage (III/3)                  | 250 V            |
| Rated voltage (III/2)                  | 320 V            |
| Rated voltage (II/2)                   | 400 V            |
| Connection in acc. with standard       | EN-VDE           |
| Nominal current $I_N$                  | 10 A             |
| Maximum load current                   | 10 A             |
| Insulating material                    | PBT              |
| Flammability rating according to UL 94 | V0               |
| Color                                  | green            |
| Number of positions                    | 2                |

#### Standards and Regulations

|  |        |
|--|--------|
| Connection in acc. with standard       | EN-VDE |
|  | CUL    |
| Flammability rating according to UL 94 | V0     |

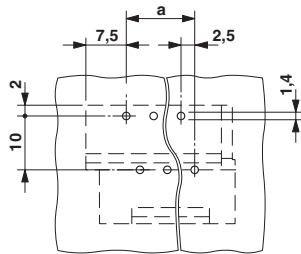
#### Environmental Product Compliance

|            |   |
|------------|---|
| China RoHS | Environmentally Friendly Use Period = 50  |
|            | For details about hazardous substances go to tab "Downloads", Category "Manufacturer's declaration" |

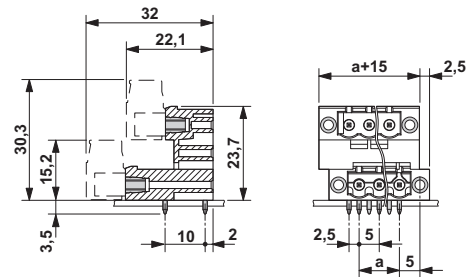
### Drawings

## Base strip - MDSTB 2,5/ 2-GF - 1846690

Drilling diagram



Dimensional drawing



## Classifications

### eCl@ss

|            |          |
|------------|----------|
| eCl@ss 4.0 | 272607xx |
| eCl@ss 4.1 | 27260701 |
| eCl@ss 5.0 | 27260701 |
| eCl@ss 5.1 | 27260701 |
| eCl@ss 6.0 | 27260704 |
| eCl@ss 7.0 | 27440402 |
| eCl@ss 8.0 | 27440402 |
| eCl@ss 9.0 | 27440402 |

### ETIM

|          |          |
|----------|----------|
| ETIM 3.0 | EC001121 |
| ETIM 4.0 | EC002637 |
| ETIM 5.0 | EC002637 |
| ETIM 6.0 | EC002637 |

### UNSPSC

|               |          |
|---------------|----------|
| UNSPSC 6.01   | 30211810 |
| UNSPSC 7.0901 | 39121409 |
| UNSPSC 11     | 39121409 |
| UNSPSC 12.01  | 39121409 |
| UNSPSC 13.2   | 39121409 |

## Approvals

### Approvals

### Approvals


VDE Gutachten mit Fertigungsüberwachung / IECCEB Scheme / cULus Recognized / EAC


## Base strip - MDSTB 2,5/ 2-GF - 1846690


### Approvals


Ex Approvals

#### Approval details

|  |   |  |          |
|--|---|--|----------|
| VDE Gutachten mit<br>Fertigungsüberwachung |  | <a href="http://www.vde.com/en/Institute/OnlineService/VDE-approved-products/Pages/Online-Search.aspx">http://www.vde.com/en/Institute/OnlineService/<br/>VDE-approved-products/Pages/Online-Search.aspx</a> | 40004701 |
|  |   |  |          |
| Nominal current I <sub>N</sub>             | 10 A  |  |          |
| Nominal voltage U <sub>N</sub>             | 250 V   |  |          |

|                                |  |   |   |                |
|--------------------------------|--|---|---|----------------|
| IECEE CB Scheme                |  |  | <a href="http://www.iecee.org/">http://www.iecee.org/</a> | DE1-58636-B1B2 |
|                                |  |   |   |                |
| Nominal current I <sub>N</sub> |  | 10 A  |   |                |
| Nominal voltage U <sub>N</sub> |  | 250 V   |   |                |

|                                |   |   |                 |
|--------------------------------|---|---|-----------------|
| cULus Recognized               |  | <a href="http://database.ul.com/cgi-bin/XYV/template/LISEXT/1FRAME/index.htm">http://database.ul.com/cgi-bin/XYV/template/LISEXT/1FRAME/index.htm</a> | E60425-19931011 |
|                                | B   | D   |                 |
| Nominal current I <sub>N</sub> | 15 A  | 10 A  |                 |
| Nominal voltage U <sub>N</sub> | 300 V   | 300 V   |                 |

|     |   |         |
|-----|---|---------|
| EAC |  | B.01742 |
|-----|---|---------|

### Accessories

Accessories

Coding element

## Base strip - MDSTB 2,5/ 2-GF - 1846690

### Accessories

Coding star - CR-MSTB - 1734401



Coding section, inserted into the recess in the header or the inverted plug, red insulating material

---

### Filler plug

Accessories - MSTB-BL - 1755477



Keying cap, for forming sections, plugs onto header pin, green insulating material

---

### Labeled terminal marker

Marker card - SK 5/3,8:FORTL.ZAHLEN - 0804183



Marker card, Card, white, labeled, Horizontal: Consecutive numbers 1 - 10, 11 - 20, etc. up to 91 - (99)100, Mounting type: Adhesive, for terminal block width: 5 mm, Lettering field: 5 x 3.8 mm

---

### Additional products

Plug - QC 1,5/ 2-STF - 1718119



Plug component, nominal current: 12 A, rated voltage (III/2): 630 V, number of positions: 2, pitch: 5 mm, connection method: Displacement connection, Color: green, Contact surface: Tin

## Base strip - MDSTB 2,5/ 2-GF - 1846690

### Accessories

#### Printed-circuit board connector - FRONT-MSTB 2,5/ 2-STF - 1779644



Plug component, nominal current: 12 A, rated voltage (III/2): 320 V, number of positions: 2, pitch: 5 mm, connection method: Front screw connection, Color: green, Contact surface: Tin

#### Printed-circuit board connector - MSTB 2,5/ 2-STF - 1786831



Plug component, nominal current: 12 A, rated voltage (III/2): 320 V, number of positions: 2, pitch: 5 mm, connection method: Screw connection with tension sleeve, Color: green, Contact surface: Tin

#### Printed-circuit board connector - MVSTBW 2,5/ 2-STF - 1835287



Plug component, nominal current: 12 A, rated voltage (III/2): 320 V, number of positions: 2, pitch: 5 mm, connection method: Screw connection with tension sleeve, Color: green, Contact surface: Tin

#### Printed-circuit board connector - MVSTBR 2,5/ 2-STF - 1835478



Plug component, nominal current: 12 A, rated voltage (III/2): 320 V, number of positions: 2, pitch: 5 mm, connection method: Screw connection with tension sleeve, Color: green, Contact surface: Tin

#### Printed-circuit board connector - FKCVR 2,5/ 2-STF - 1909883



Plug component, nominal current: 12 A, rated voltage (III/2): 320 V, number of positions: 2, pitch: 5 mm, connection method: Push-in spring connection, Color: green, Contact surface: Tin

## Base strip - MDSTB 2,5/ 2-GF - 1846690

### Accessories

Printed-circuit board connector - FKCVW 2,5/ 2-STF - 1910209



Plug component, nominal current: 12 A, rated voltage (III/2): 320 V, number of positions: 2, pitch: 5 mm, connection method: Push-in spring connection, Color: green, Contact surface: Tin

Printed-circuit board connector - FKC 2,5/ 2-STF - 1910526



Plug component, nominal current: 12 A, rated voltage (III/2): 320 V, number of positions: 2, pitch: 5 mm, connection method: Push-in spring connection, Color: green, Contact surface: Tin

Printed-circuit board connector - SMSTB 2,5/ 2-STF - 1970870



Plug component, nominal current: 12 A, rated voltage (III/2): 320 V, number of positions: 2, pitch: 5 mm, connection method: Screw connection with tension sleeve, Color: green, Contact surface: Tin

Printed-circuit board connector - FKCS 2,5/ 2-STF - 1974928



Plug component, nominal current: 12 A, rated voltage (III/2): 320 V, number of positions: 2, pitch: 5 mm, connection method: Push-in spring connection, Color: green, Contact surface: Tin