

4

3

2

1

THIS DRAWING IS UNPUBLISHED.

RELEASED FOR PUBLICATION

ALL RIGHTS RESERVED.

COPYRIGHT - By -

LOC
FTDIST
0

REVISIONS

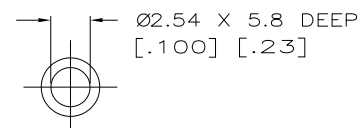
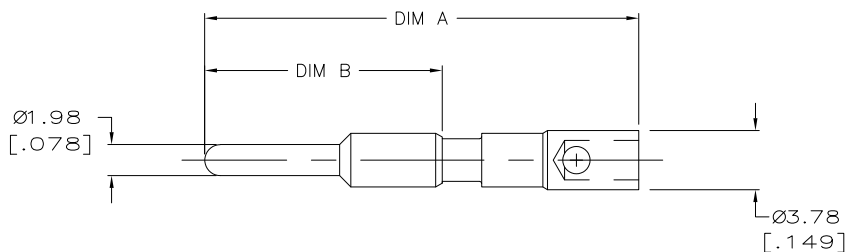
P	LTR	DESCRIPTION	DATE	DWN	APVD
C3		REVISED PER ECO-11-005027	11MAR11	RK	HMR



MATERIAL:
BODY: COPPER ALLOY



- FINISH-BODY AND BAND, .0002 IN. SILVER.
3. WIRE BARREL WILL ACCEPT 12-14 AWG WIRE.
4. MATES WITH AMP PART NUMBER 193842-1.



.650	1.15	193841-2
.602	1.10	193841-1
DIM B	DIM A	PART NUMBER

THIS DRAWING IS A CONTROLLED DOCUMENT.		DWN 03-18-94 CRAIG M. SVOBODA	
DIMENSIONS: mm [INCHES]		CHK -	
TOLERANCES UNLESS OTHERWISE SPECIFIED:		APVD -	
0 PLC ± -		PRODUCT SPEC -	
1 PLC ± -		APPLICATION SPEC -	
2 PLC ± 0.5[.02]		WEIGHT -	
3 PLC ± 0.25[.010]		SIZE A3	
4 PLC ± -		CAGE CODE 00779	
ANGLES ± -		DRAWING NO C=193841	
MATERIAL -		RESTRICTED TO -	
FINISH -		CUSTOMER DRAWING	
		SCALE 4:1	
		SHEET 1 of 1	
		REV C3	

TE TE ConnectivityPIN, 2mm, 12-14 AWG
HIGH CURRENT MATE-N-LOK II