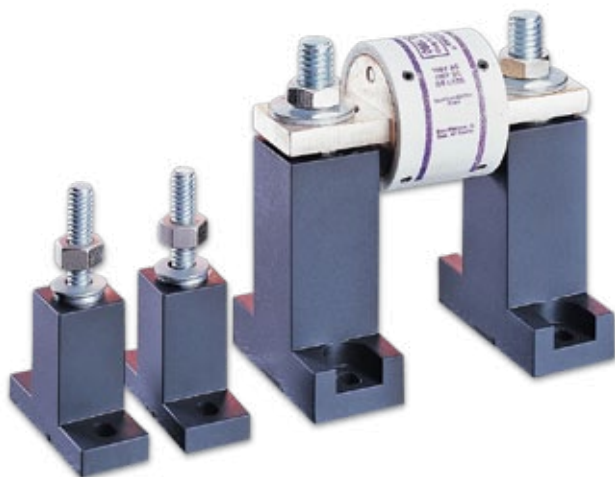


SEMICONDUCTOR FUSEBLOCKS

LSCR Series



Description

Modular-designed Semiconductor fuseblocks are designed to accommodate a wide range of Semiconductor fuses, with a maximum diameter of 3".

Features/Benefits

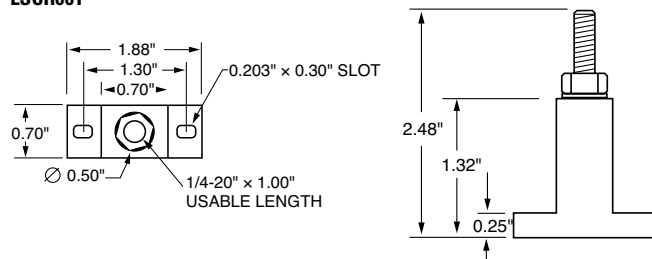
- Modular design reduces inventory requirements
- Sold in pairs for convenience
- Constructed of molded phenolic (with plated steel studs)

Web Resources

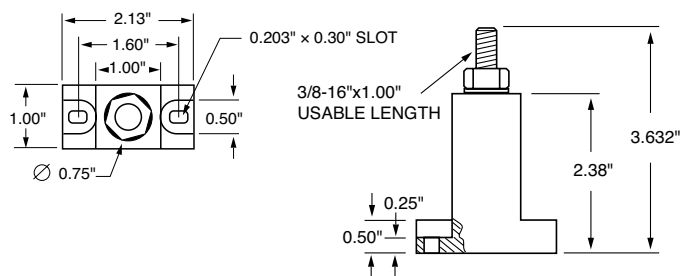
Sample requests, downloadable CAD drawings and other technical information: www.littelfuse.com/lscr

Dimensions in inches

LSCR001



LSCR002



Specifications

Voltage Rating:	LSCR001: Accepts fuses 1" diameter or less at 600 V LSCR002: Accepts fuses up to 3" diameter at 600 V
Ampere Ratings:	LSCR001: 1 – 400 A capacity LSCR002: 70 – 800 A capacity
Approvals:	UL Recognized (File No. E14721)
Stud Size:	LSCR001: 1/4-20 thread (Torque: 65 in-lbs.) LSCR002: 3/8-16 thread (Torque: 192 in-lbs)
Base:	Molded phenolic. 150° C temperature rating
Terminal Construction:	Plated steel. Supplied with nut and belleville washer

Recommended Fuses

Semiconductor fuses. See tables below.

LSCR001 Semiconductor Fuseblock Selection Guide

FUSE SERIES	AMPERE RATING
L15S	70 – 400
L25S, LA30QS	35 – 60
L25S	70 – 200
L50S, LA50QS	35 – 60
L50S, LA50QS	70 – 100
LA50QS	125 – 200
L60S	35 – 60
L60S	70 – 100
L60S	125 – 200
L70S, LA70QS	35 – 60
L70S, LA70QS	70 – 200
KLC	1 – 30
KLC	35 – 60
LA100P	35 – 60
LA15QS	70 – 400
LA30QS	70 – 200

LSCR002 Semiconductor Fuseblock Selection Guide

FUSE SERIES	AMPERE RATING
L15S, LA15QS	500 – 800
L25S, LA30QS	225 – 700
L25S, LA30QS	800
L50S, LA50QS	225 – 400
L50S, LA50QS	450 – 600
L50S, LA50QS	700 – 800
L60S	225 – 400
L60S	450 – 600
L60S	700 – 800
L70S, LA70QS	125 – 400
L70S, LA70QS	450 – 800
KLC	70 – 100
KLC	125 – 200
KLC	225 – 400
KLC	450 – 800
LA100P	70 – 800
JLLN	700 – 800
JLLS	250 – 400
JLLS	700 – 800

Mouser Electronics

Authorized Distributor

Click to View Pricing, Inventory, Delivery & Lifecycle Information:

[Littelfuse:](#)

[1LS102](#) [1LS101](#)