

# MICRO SWITCH

FREEPORT ILLINOIS, U.S.A  
A DIVISION OF HONEYWELL  
FED. MFG. CODE 91929

## SWITCH - BASIC

CATALOG LISTING

ISE197

ISE197

M

DRAWING  
NUMBER

ISSUE

4

REPLACES

PR-6594

CHECK

REVISIONS

A NEW DWG  
PR-6594

J A L  
8 JUL 77

B C056103

CJH  
12 NOV 84

C C057041A

CJH  
21 MAR 85

CHECK

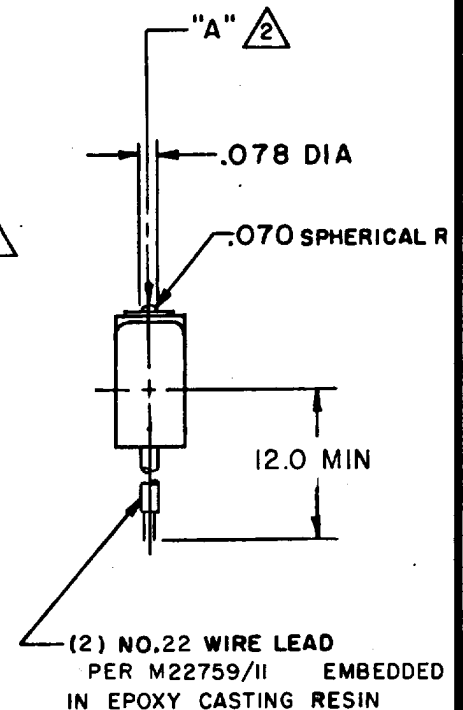
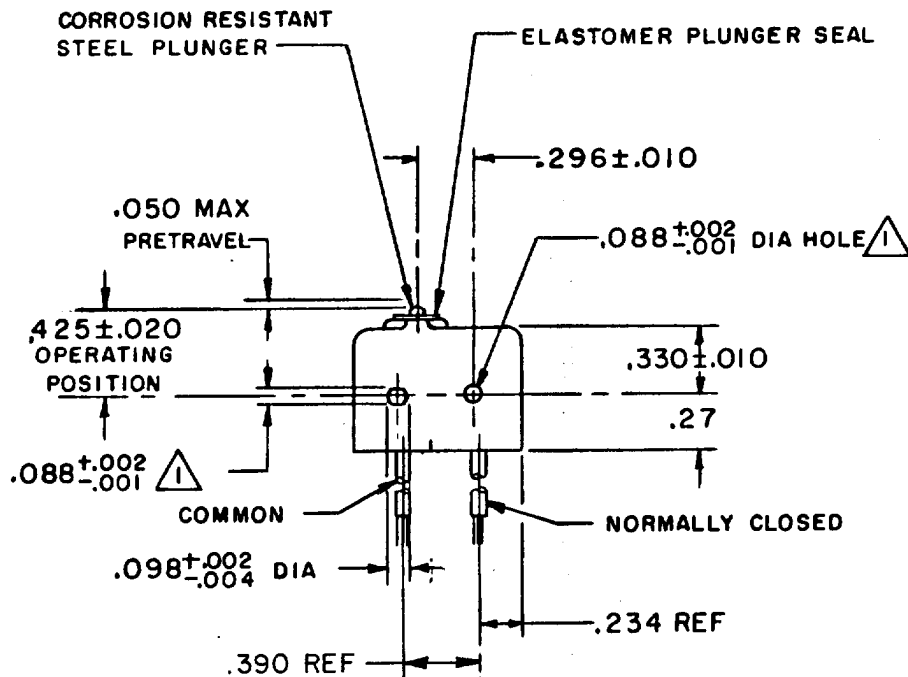
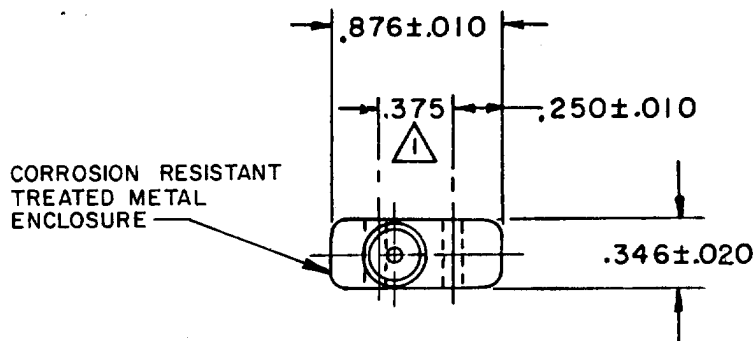
11 JULY 77

C E B

77

J A L

FO-52848-A



### NOTE-

- 1- MOUNTING HOLES WILL ACCEPT .087 MAX DIA PINS OR SCREWS ON .375±.002 CENTERS
- 2- ACTUATION IN LINE WITH ARROW "A" IS RECOMMENDED
- 3- WEIGHT OF SWITCH ONLY IS .26 OZ MAX, WEIGHT OF SWITCH WITH WIRE LEADS IS .50 OZ MAX

THIS DRAWING COVERS A PROPRIETARY ITEM AND IS THE PROPERTY OF MICRO SWITCH, A DIVISION OF HONEYWELL. THIS DRAWING IS NOT TO BE COPIED OR USED WITHOUT THE APPROVAL OF MICRO SWITCH.

THIRD ANGLE PROJECTION

### CHARACTERISTICS

OPERATING FORCE ----- 5-17 OZ MIN  
RELEASE FORCE ----- 4 OZ MIN  
RELEASE TRAVEL ----- .004 MIN  
DIFFERENTIAL TRAVEL ----- .004 MAX  
OVERTRAVEL ----- .003 MIN

### ELECTRICAL DATA

CONTACT ARRANGEMENT  
S P N C

250 VAC ----- 5 AMP

30 VOLTS DC RATING

INDUCTIVE ----- SEA LEVEL - 3 AMP  
50,000 FT - 2.5 AMP  
RESISTIVE ----- SEA LEVEL - 5 AMP  
50,000 FT - 5 AMP  
MAXIMUM INRUSH ----- 24 AMP

SCALE FULL

DO NOT SCALE PRINT

### TOLERANCES

APPLY TO DESIGN UNITS. CONVERSIONS ARE ONLY FOR REFERENCE. UNLESS NOTED, TOLERANCES ARE ±

	DIM. mm	TOL. mm/in	DIM. in	TOL. mm/in
NO PLACES	X	1/.04	X	0.01/03
ONE PLACE	X,X	0.4/.016	X,X	0.38/.015
TWO PLACES	X,X,X	0.15/.006	X,X,X	0.13/.005
THREE PLACES				

DESIGN UNITS

SI METRIC

US CUSTOMARY

WEIGHT

3