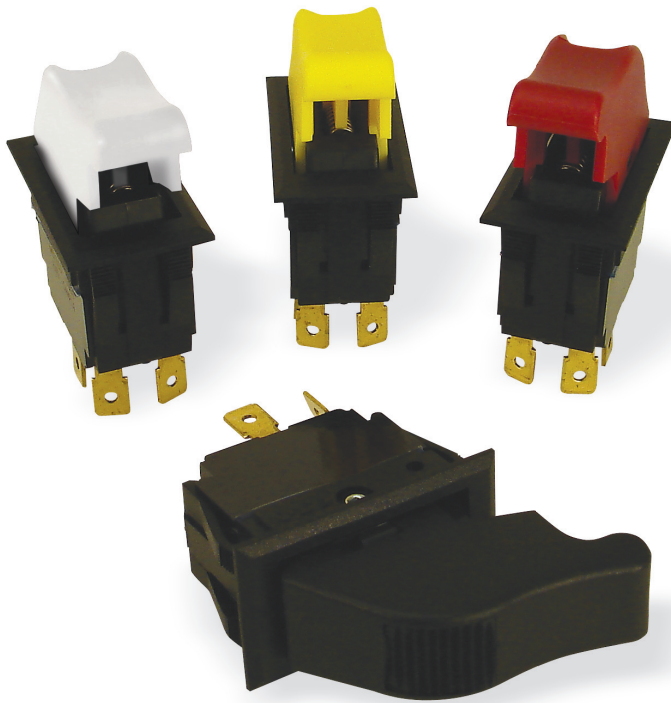


Prevent and protect



Eaton's Vehicle Control business offers these new dual motion safety switches to prevent accidental actuation and protect operator personnel and equipment.

These rockers are available in two standard circuit options: OFF (locked)—None—ON and ON (locked)—None—ON. The locked safety feature requires two motions from the operator to place the actuator in the unlocked position. In the locked position, the operator must apply pressure on the actuator forward and an additional force in an upward motion for the switch to be moved to the unlocked position. Once in the unlocked position, the switch can easily be moved back into the locked position.

Dual motion safety switches are ROHS compliant with UL/CSA recognition at 15A, 125 Vac; 10A 250 Vac; ¾ HP, 250 Vac. They are also recommended up to 15A at 28 Vdc. An added benefit is its IP54 seal level. They can be used in tough environments where there may be exposure to small dust particles or water splashing against the enclosure from any direction. For available higher ratings or additional customizable circuits, please contact your local sales representative.

There are many options to choose when building the right switch for your application. Termination types to choose from include screw type, solder lug and 0.250" spade terminals. Actuators are available in four standard colors with an appealing matte finish. Choose from black, red, white or yellow. Eaton also offers standard and customizable legend pad printing options on top of the actuator. There is even an option for arrows to be pad printed on the sides of the rocker to indicate the correct forward motion.

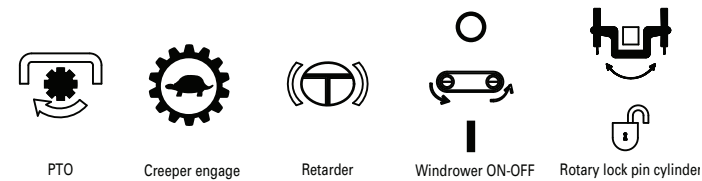
For added convenience, the bezel is designed to allow an easy snap-in switch mount into various panel thicknesses. The actuators even have ergonomic grooves to help provide the operator a firm grip when moving the actuator.

Applications include:

- Farming equipment
- Fire trucks and safety vehicles
- Lawn and garden equipment
- Large transportation buses
- Industrial and commercial equipment

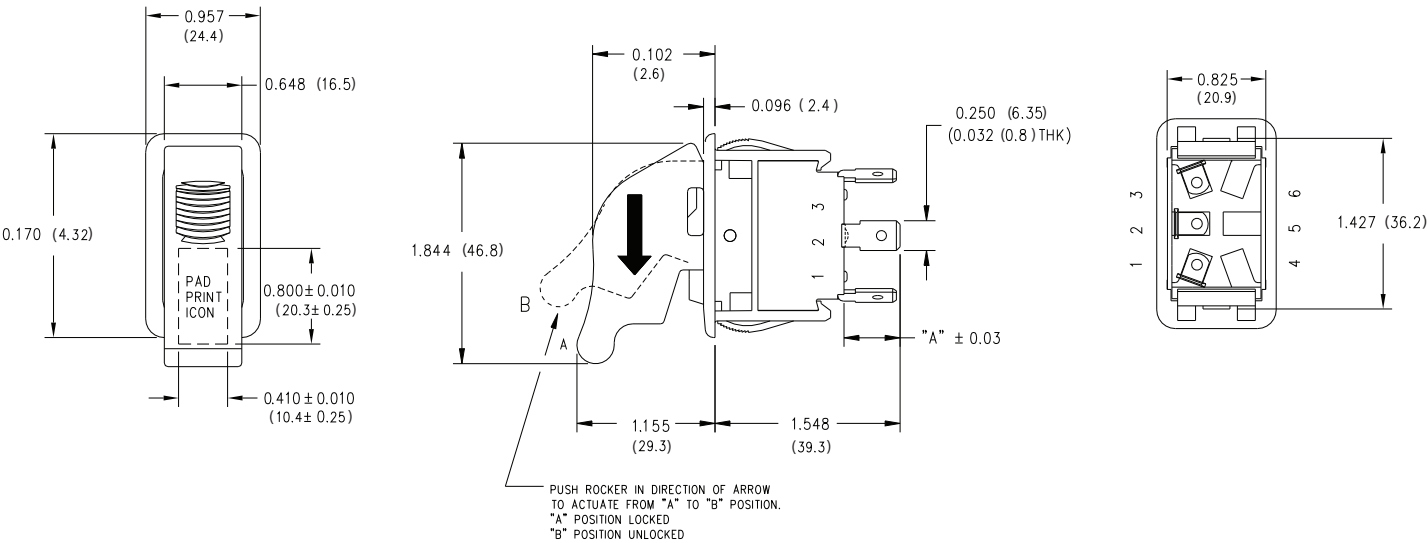


Available switch pad prints



Note: Please contact your sales representative for more available pad print options.

Dimensions in inches (mm)



Catalog number selection

8179K21Z T 51 XX X Y

Circuit with Rocker In			
Position A	Center Position	Position B	Base Part Number
OFF (lock)	None	ON	= 8179K21Z
ON (lock)	None	ON	= 8179K22Z

Termination Type	
Screw Type	= 50
Solder Lug	= 51
Quick Connect (0.250" spade)	= 52

Top Pad Print ①	
None	= XX
PTO	= AA
Creeper Engage	= AB
Retarder	= AC
Windrower ON-OFF	= AD
Rotary Lock Pin Cylinder	= AE

Side Arrow Pad Prints	
None	= X
Both Sides	= Y

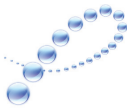
Rocker Color	
Black	= Y
Red	= T
White	= M
Yellow	= E

Icon Orientation	
Standard	= A
90° CW	= B
180° CW	= C
270° CW	= D
None	= X

① Black pad print color for white and yellow rockers. White pad print color for red and black rockers.

Eaton Corporation
Electrical Group
1000 Cherrington Parkway
Moon Township, PA 15108
United States
877-ETN-CARE (877-386-2273)
Eaton.com

© 2009 Eaton Corporation
All Rights Reserved
Printed in USA
Publication No. PA07002002E / Z8313
March 2009



PowerChain Management®

PowerChain Management is a registered trademark of Eaton Corporation.

All other trademarks are property of their respective owners.