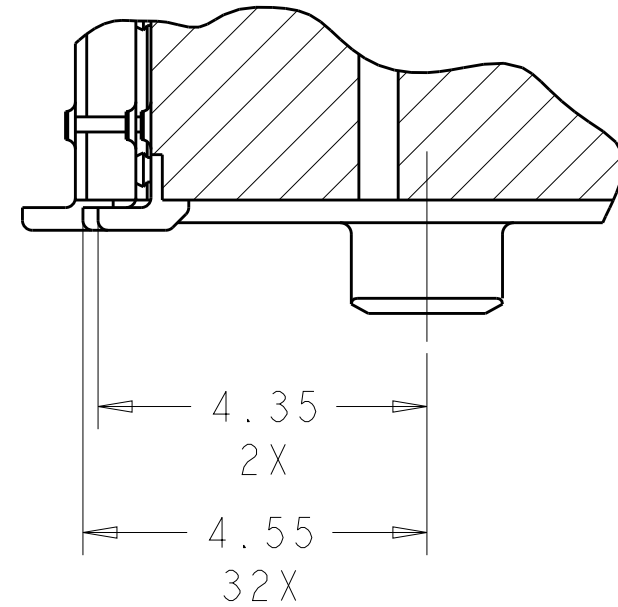
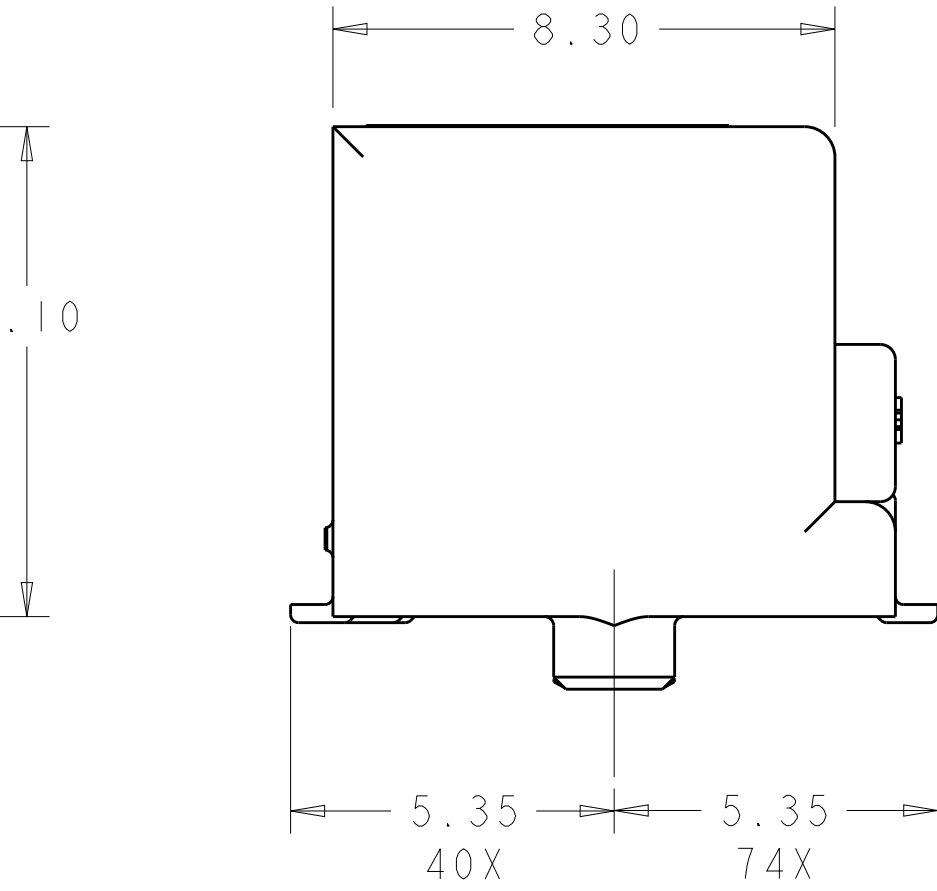
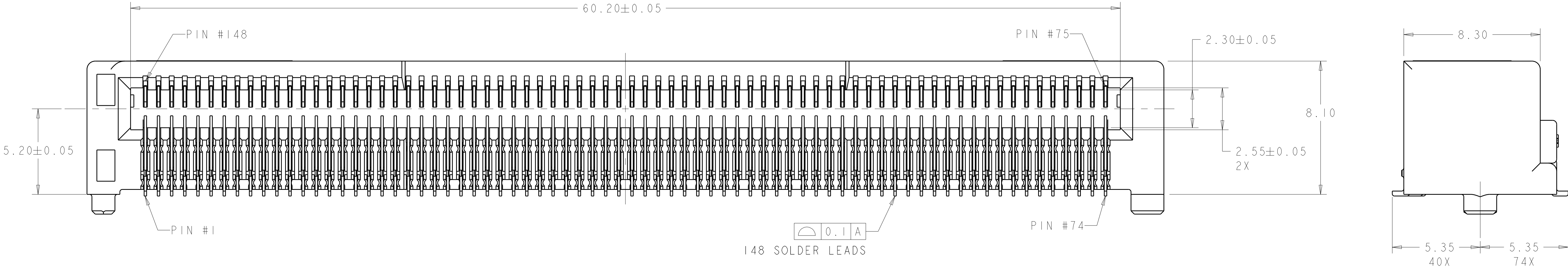
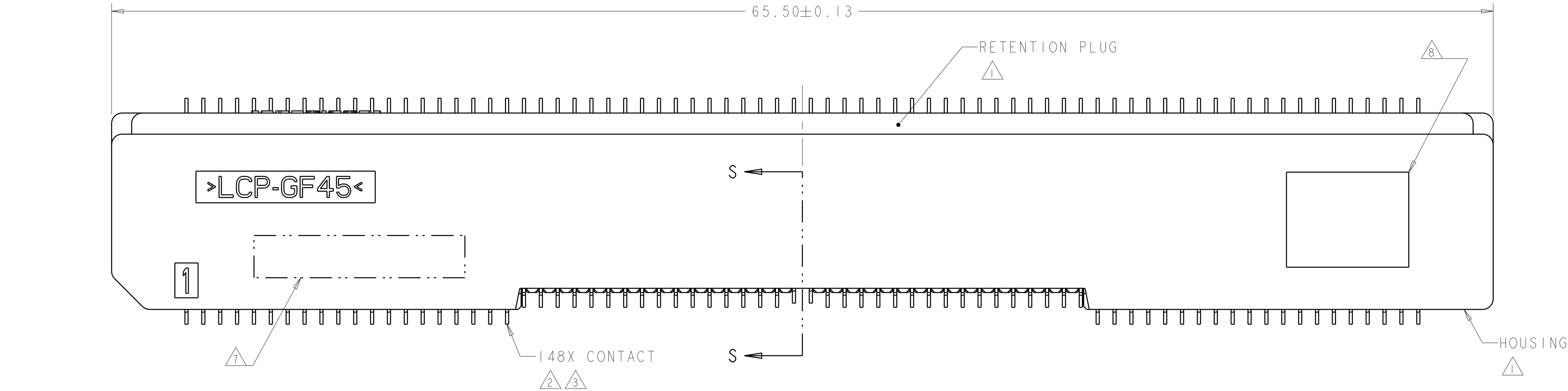


LOC		DIST		REVISIONS						
GP		00		P	LTR	DESCRIPTION	DATE	DWN	APVD	
					A	RELEASED PER ECO-12-006362	11MAY2012	CJV	MRS	
					A1	RELEASED PER ECO-15-016093	09NOV2015	PP	SH	

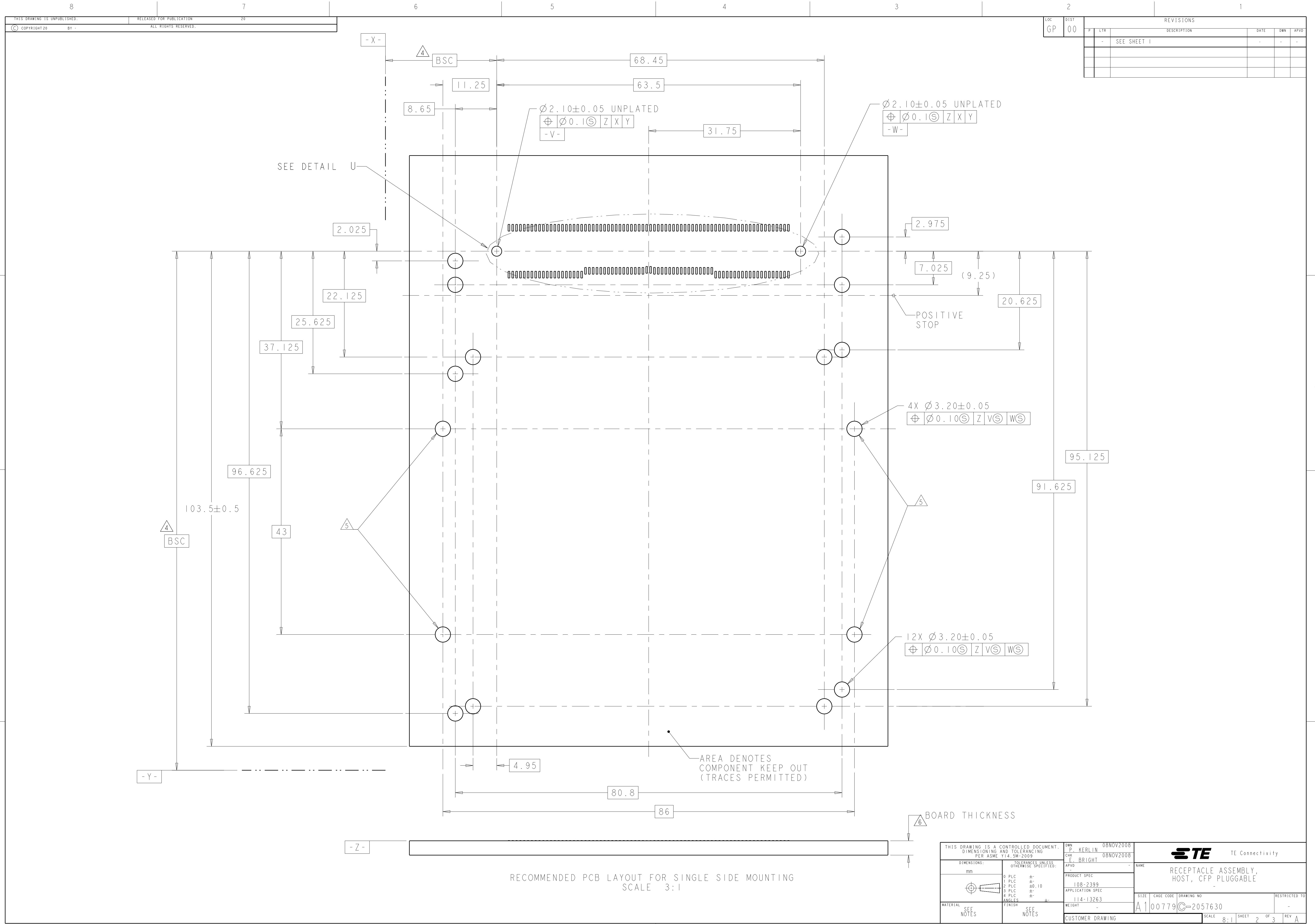
- 1 HOUSING AND RETENTION PLUG MATERIAL: POLYESTER LCP.
- 2 CONTACT MATERIAL: COPPER ALLOY.
- 3 CONTACT FINISH: CONFORMS TO THE REQUIREMENTS OF TE CONNECTIVITY PRODUCT SPECIFICATION 108-2399. BASED ON EIA/ECA-364-1000.01A, (CONTROLLED ENVIRONMENT APPLICATIONS) ON MATING END, GOLD FLASH ON SOLDER TAILS.
- 4 DATUMS AND BASIC DIMENSIONS ARE TO BE ESTABLISHED BY CUSTOMERS FIDUCIALS.
- 5 OPTIONAL HOLES FOR M3x0.5 SCREW/STANDOFFS.
- 6 BELLY TO BELLY PCB THICKNESS: 3.40±0.40mm.
- 7 PART NUMBER AND DATE CODE MARKED IN APPROXIMATE AREA SHOWN.
- 8 MANUFACTURER'S LOGO APPROXIMATELY AS SHOWN.



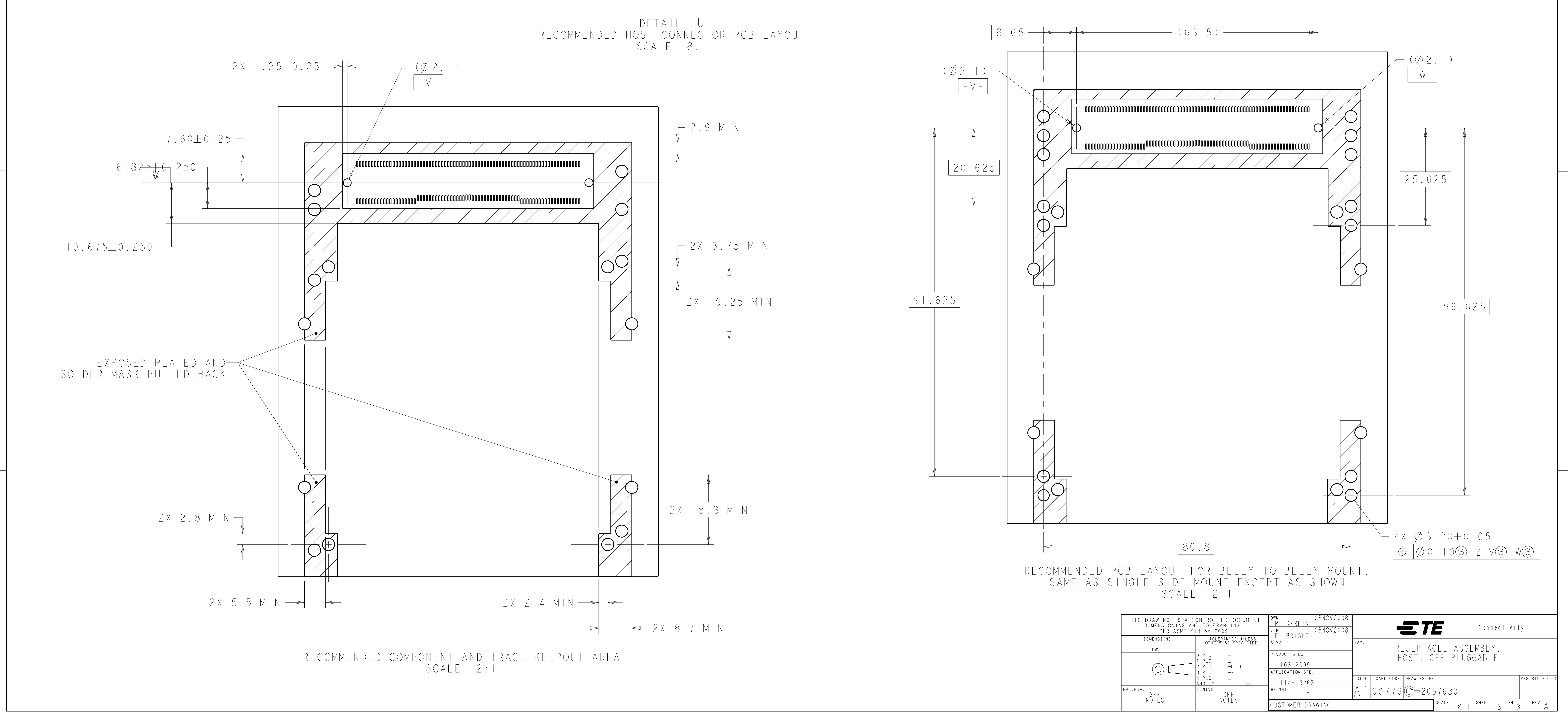
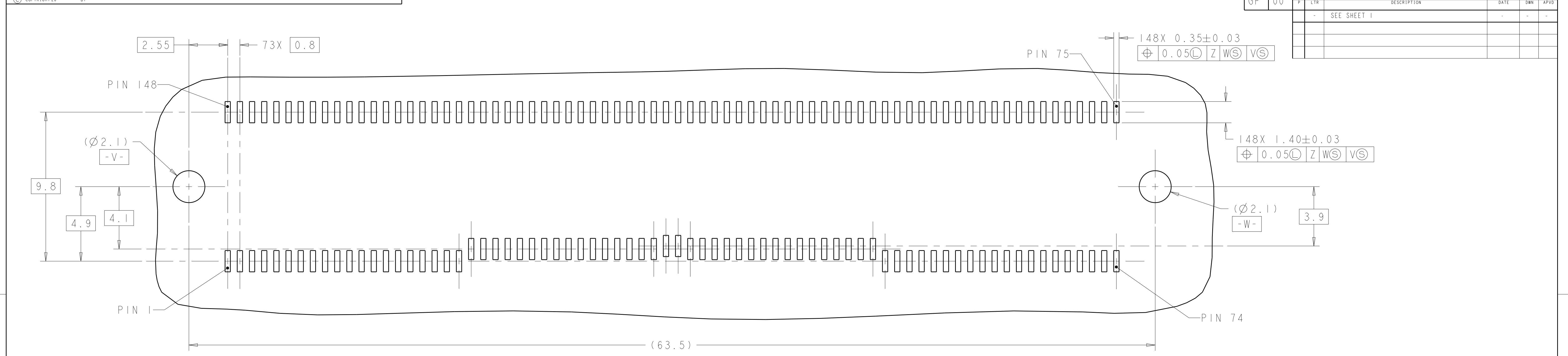
SECTION S-S
ROTATED 90° CW
SCALE 10:1

TRAY	2057630-2
TAPE REEL	2057630-1
PACKAGE	PART NUMBER

THIS DRAWING IS A CONTROLLED DOCUMENT. DIMENSIONING AND TOLERANCING PER ASME Y14.5M 2009.		DWN P. KERLIN 08NOV2008	TE Connectivity	
DIMENSIONS: mm		CHK E. BRIGHT 08NOV2008		
TOLERANCES UNLESS OTHERWISE SPECIFIED:		APVD -	NAME	
0 PLC ±		PRODUCT SPEC	RECEPTACLE ASSEMBLY, HOST, CFP PLUGGABLE	
1 PLC ±0.10		108-2399		
2 PLC ±		APPLICATION SPEC	SIZE CAGE CODE DRAWING NO	
3 PLC ±		114-13263		
4 PLC ±		WEIGHT	A100779C=2057630	
ANGLES FINISH		-		
MATERIAL SEE NOTES		CUSTOMER DRAWING	SCALE 8:1 SHEET 1 OF 3 REV A1	



LOC		DIST		REVISIONS					
GP		00		P	LTR	DESCRIPTION	DATE	DWN	APVD
				-	-	SEE SHEET 1	-	-	-



Mouser Electronics

Authorized Distributor

Click to View Pricing, Inventory, Delivery & Lifecycle Information:

[TE Connectivity:](#)

[2057630-1](#)