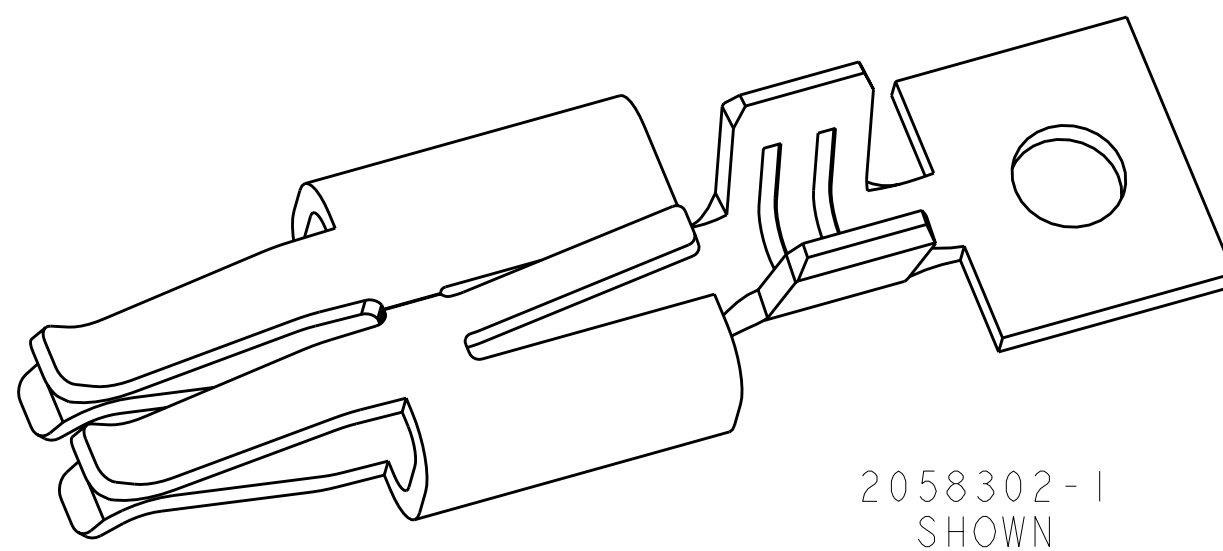
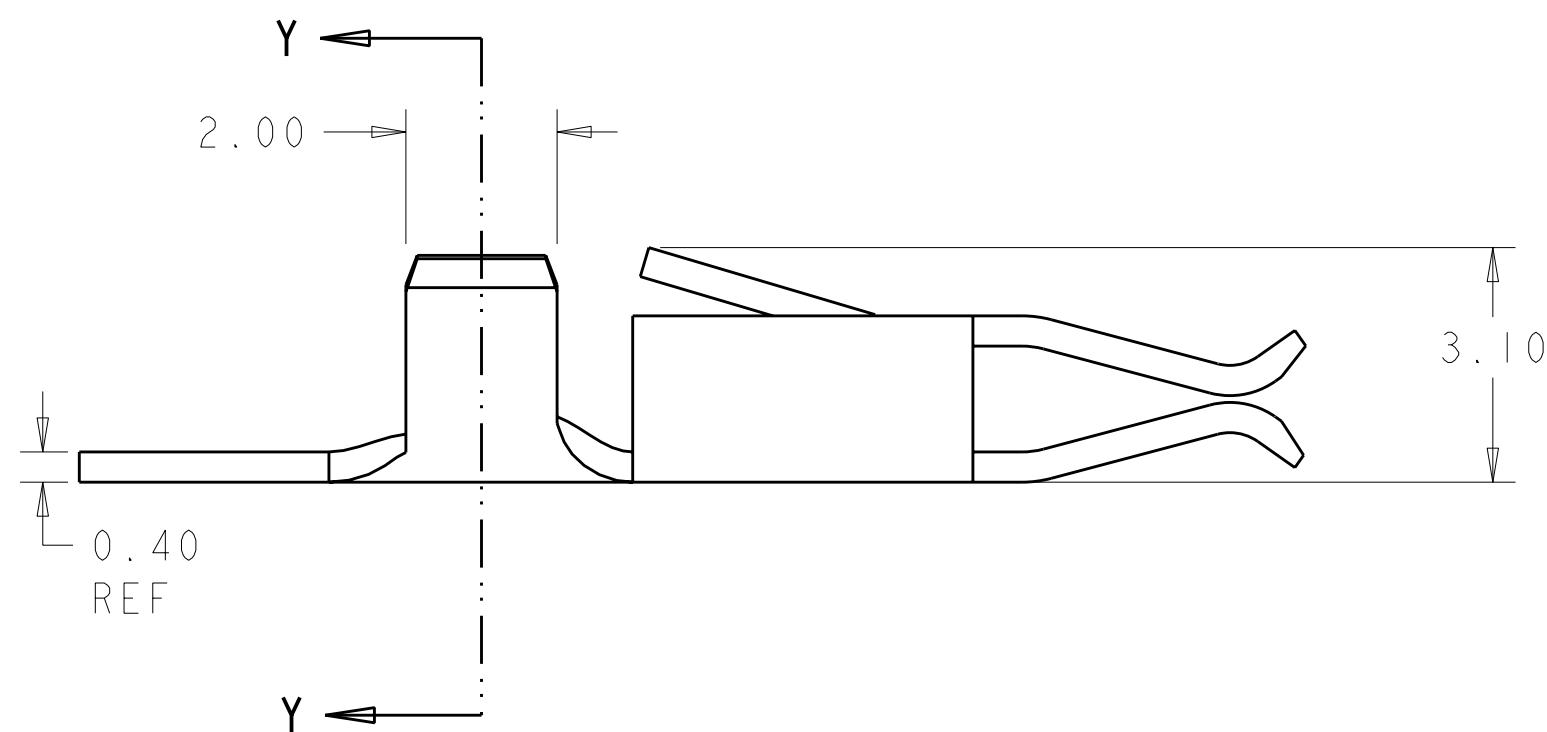
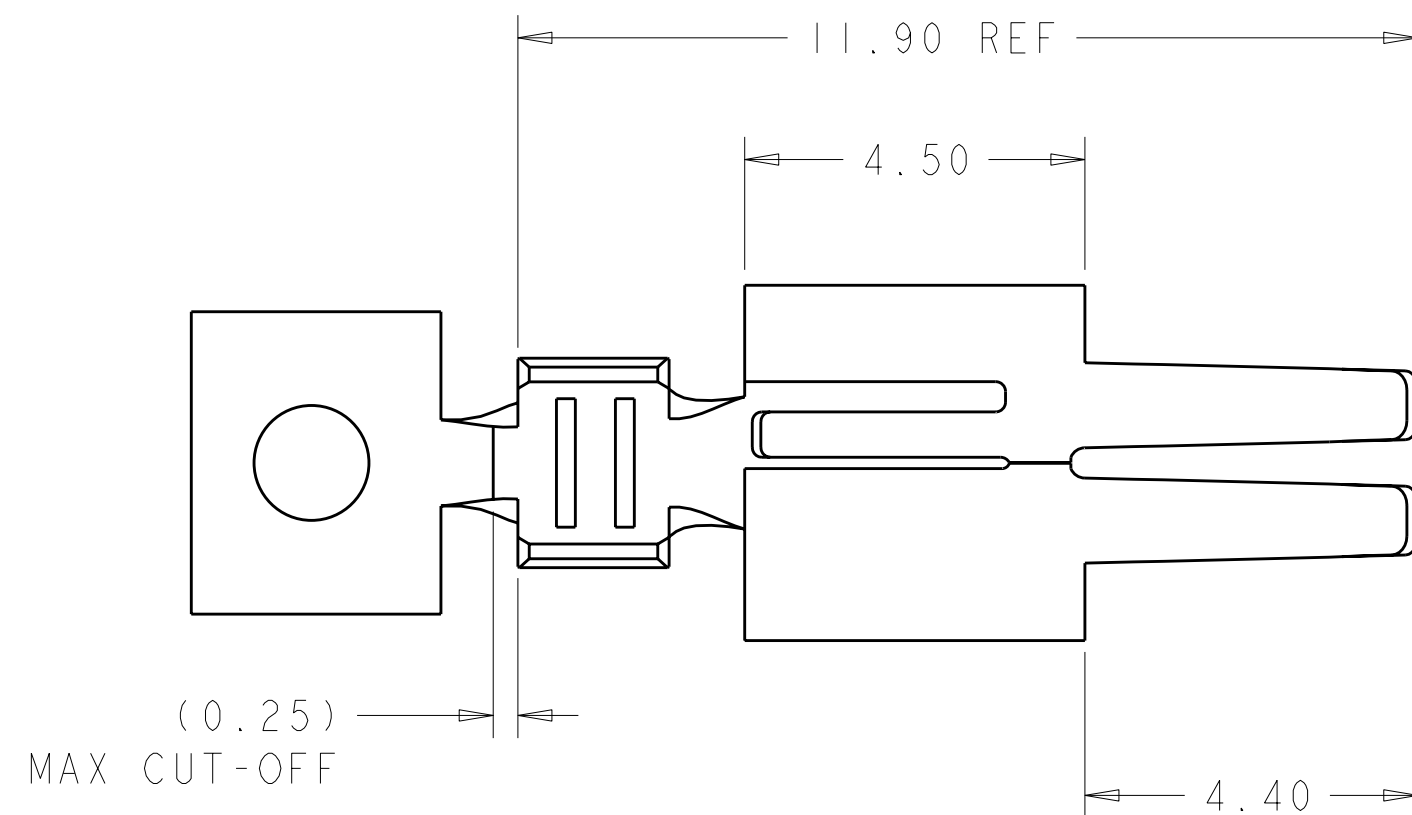


LOC	DIST	REVISIONS					
-	-	P	LTR	DESCRIPTION	DATE	DWN	APVD
			AI	REVISED PER ECR-09-010783	13MAY2009	HMR	DD



2058302-1
SHOWN

NOTES:

△ MATERIALS AND FINISH:
- COPPER ALLOY, FINISH: TIN

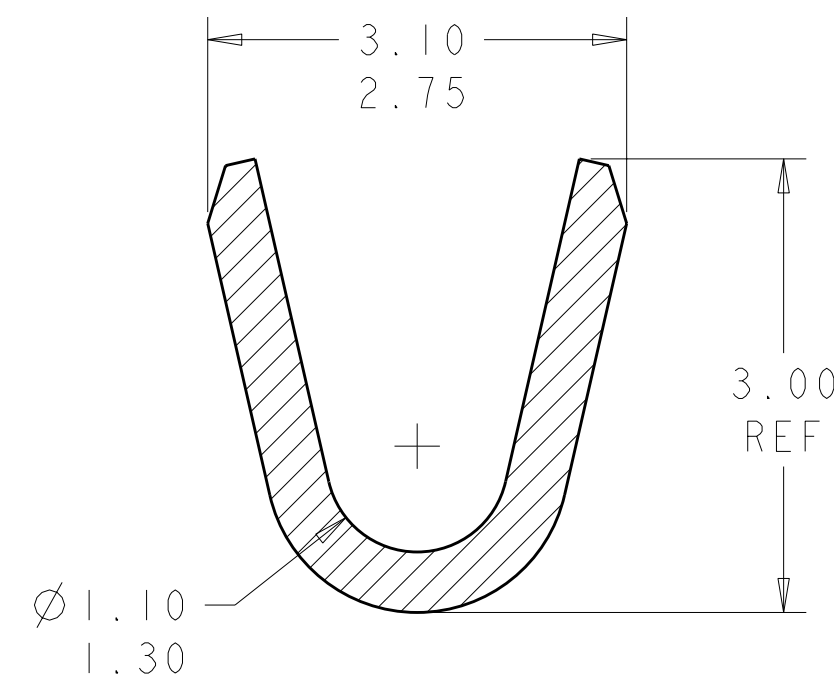
2. MUST COMPLY WITH DIRECTIVE 2002/95/EC (ROHS)

3. THIS PRODUCT HAS NOT COMPLETED VALIDATION TESTING

4. WIRE RANGE : 18-22 AWG, STRANDED



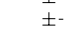
5. MAX INSULATION DIA: 2.03

6. RECOMMENDED TE HOUSING P/N X-2058299-X



SECTION Y - Y
SCALE 20:1

LOOSE PIECE	2058302-2
ON STRIP	2058302-1
REMARKS	PART NO.

THIS DRAWING IS A CONTROLLED DOCUMENT FOR TYCO ELECTRONICS CORPORATION IT IS SUBJECT TO CHANGE AND THE CONTROLLING ENGINEERING ORGANIZATION SHOULD BE CONTACTED FOR THE LATEST REVISION.		DWN S FISHER 07MAY2008		Tyco Electronics		Tyco Electronics	
CHK R NARANG 07MAY2008		APVD		NAME		Harrisburg, PA 17105-3608	
DIMENSIONS:		TOLERANCES UNLESS OTHERWISE SPECIFIED:		SOCKET CONTACT WIRE TO BOARD CONNECTOR			
mm							
		0 PLC ± 1 PLC ± 2 PLC ±0.13 3 PLC ± 4 PLC ±					
MATERIAL		ANGLES FINISH		SIZE		CAGE CODE	DRAWING NO
				A2		00779	C-2058302
WEIGHT		CUSTOMER DRAWING		SCALE		SHEET	OF
				10		1	REV A

Mouser Electronics

Authorized Distributor

Click to View Pricing, Inventory, Delivery & Lifecycle Information:

[TE Connectivity:](#)

[2058302-1 \(Cut Strip\)](#) [2058302-1 \(Mouser Reel\)](#)