

5

4

3

2

1

## 受控 CONTROLLED DOCUMENT

编号 P/N	25-7047-CUST	版本 Rev	01	日期 Rel'd Date	Apr29,09
-----------	--------------	-----------	----	------------------	----------

DRAWING NO.

25-7047-CUST

## REVISIONS

01

OFFICIAL RELEASE

03-10-09

Y

U

Y

U

T

H

Thomas  
Chow

Description: F W/Att. 1/2 Ring RG-6 TFE

Part No: 25-7047

Application: For Teflon/ Plenum RG-6 Cable

Crimp Tool: 24-7710 or 24-8866P

Impedance: 75 Ohms

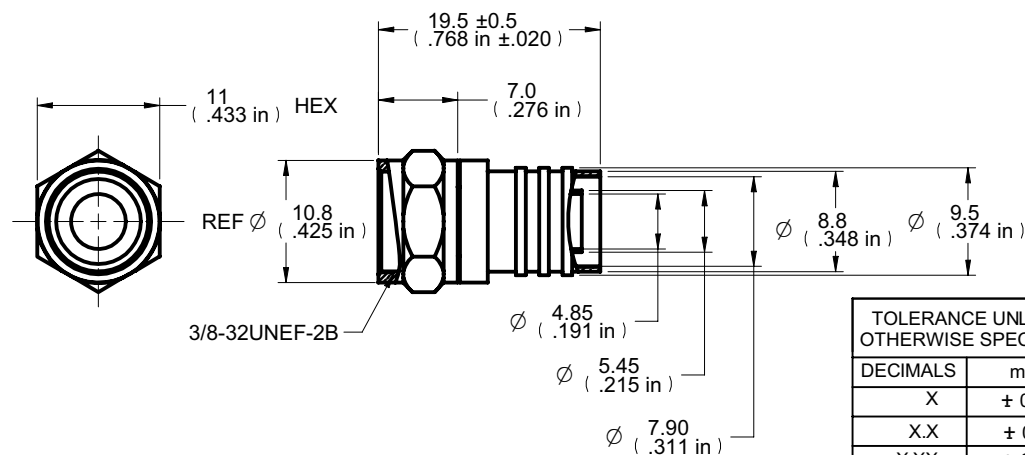
Frequency Range: 0-750 MHz

Material: Body Brass Nickel plated

Nut Brass Nickel plated

RoHS Compliance: Yes

Technical Detail: Refer to Emerson Document P/N 25-0000



## DIM OUTLINE

TOLERANCE UNLESS OTHERWISE SPECIFIED		DRAWN BY	DATE
DECIMALS	mm	BETTY.YU	03-10-09
X	± 0.5	CHECKED BY	DATE
X.X	± 0.3	BETTY.YU	03-10-09
X.XX	± 0.1	APPROVED BY	DATE
ANGLES	± 0.5°	THOMAS	03-10-09
		U/M	mm

THIS DRAWING WAS PRODUCED BY COMPUTER,  
DO NOT SCALE DRAWING OR UPDATE MANUALLY.

CUSTOMER COPY

Connectivity  
Solutions

TITLE

F W/ATT. 1/2 RING RG-6 TFE

SHEET  
1 OF 1

DRAWING NO.

25-7047-CUST

SIZE

A