

EAO – Your Expert Partner for Human Machine Interfaces

704.405.018.10 - Selector switch actuator illuminable, 3 positions, short lever

**704.405.018i - Selector switch actuator illuminable,
3 positions, short lever**



Attention: The preview is based on a sample product. This can differ from your current configuration.

necessary components



704.951.0
Lamp block

704.405.018.10 comprises:

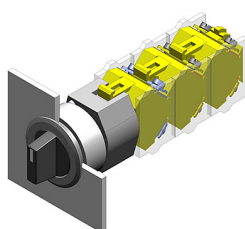
704.405.018i actuator

704.951.0 lamp block

EAO – Your Expert Partner for Human Machine Interfaces

704.405.018.10 - Selector switch actuator illuminable, 3 positions, short lever

704.405.018I - Selector switch actuator illuminable, 3 positions, short lever



Attention: The preview is based on a sample product. This can differ from your current configuration.

Mounting

Mounting cut-out	Ø 30.5 mm
Design	flush

Front

Front dimension	Ø 35 mm
Front shape	round
Front ring material	Aluminium
Front ring colour	natural anodized

Other Attributes

Weight	0.056 kg
--------	----------

Operating-/Indication part

Lever material	Plastic
Lever colour	black
Switching angle	B = 42° / 42°

IP-Rating

Front protection	IP 67
------------------	-------

Actuator

Switching action	Momentary - Rest - Momentary
------------------	------------------------------

Switching element

Rotary positions	3
------------------	---

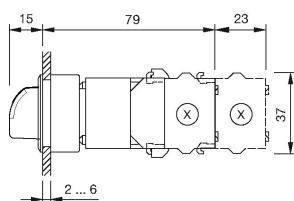
Function

Selector switch

EAO – Your Expert Partner for Human Machine Interfaces

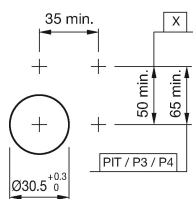
704.405.018.10 - Selector switch actuator illuminable, 3 positions, short lever

Dimensions



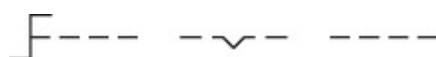
X = Screw terminal

Mounting cut-outs

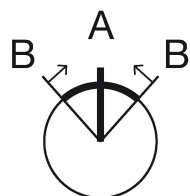


PIT = Push-in terminal

Wiring diagram



Switching positions



Additional information

Max. 3 switching elements can be clipped on
The colour of anodized aluminium parts can vary due to technical production reasons

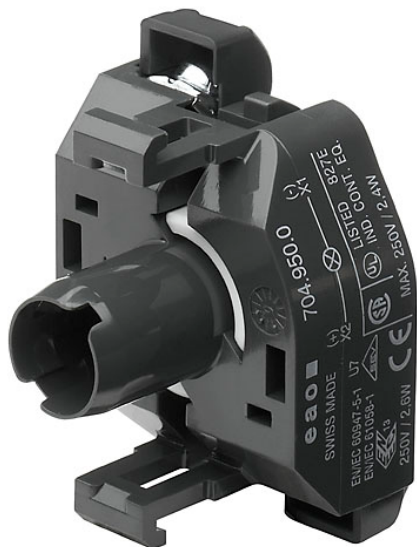
Legend

Switching action: A = Rest, B = Momentary

EAO – Your Expert Partner for Human Machine Interfaces

704.405.018.10 - Selector switch actuator illuminable, 3 positions, short lever

704.951.0 - Lamp block



Attention: The preview is based on a sample product. This can differ from your current configuration.

Other Attributes

Weight 0.012 kg

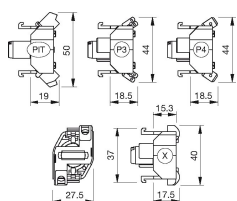
Connection Method

Terminal Screw

EAO – Your Expert Partner for Human Machine Interfaces

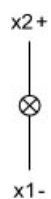
704.405.018.10 - Selector switch actuator illuminable, 3 positions, short lever

Dimensions



X = Screw terminal

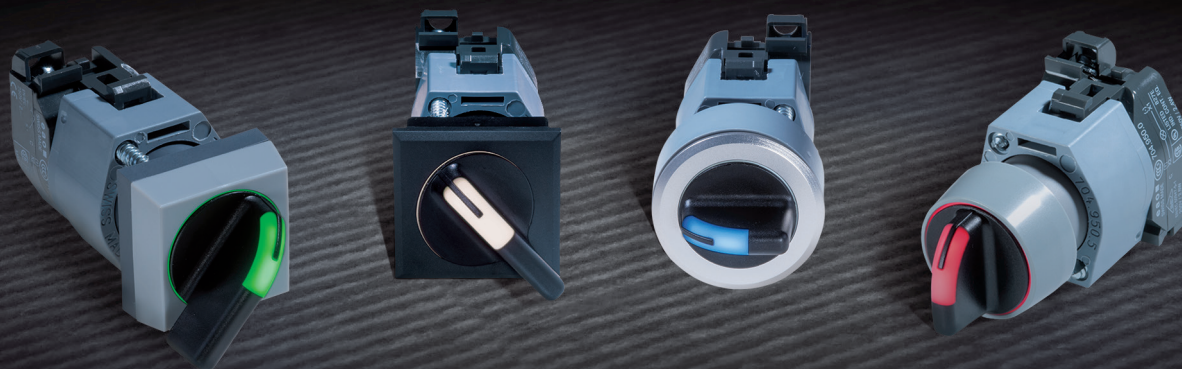
Wiring diagram



Legend

Switching action: A = Rest, B = Momentary

Series 04 | Illuminable Selector Switch



EAO, the expert partner for Human Machine Interfaces, extends the Series 04 range with a new illuminable selector switch. With IP67/IP65 environmental protection, new LED illumination and an ergonomic design according to DIN5566-1, this 22.5/30.5 mm mounted component is suitable for a wide range of applications in rail vehicles and machinery. Its switching element has been tested to achieve at least 1.25 million operations. The switch is available in 2- and 3-position versions with a combination of momentary and maintained actions. This EAO product safely operates in temperatures from -25°C to $+55^{\circ}\text{C}$.

Main features

- Single or bi-colour illumination
- Modern design with rounded corners – conform to DIN5566-1
- High environmental resistance – conform to IP65 and IP67
- Momentary, maintained or combinations of each action
- Long product service life – more than one million operating cycles

Typical applications

- Control panels for railway and light rail
- Machinery control panels
- Process control panels

Materials

Front ring (Series 04)	Polyamide, Aluminium or Stainless Steel
Mounting flange (Series 04)	Polyethylene terephthalate
Actuator housing (new)	Polycarbonate

Switching system

The illuminated selector switch can be used with any Series 04 switching element.

Mechanical characteristics

Mechanical lifetime	2.5 million cycles of operation (momentary) 1.25 million cycles of operation (maintained)
Actuating force	12 ... 25 Ncm (with switching element) depending on the switching positions

Environmental conditions

Storage temperature	-40°C ... $+85^{\circ}\text{C}$
Operating temperature	-25°C ... $+55^{\circ}\text{C}$
Front protection	IP67, IP65
Approvals	regarding Series 04

LED illuminations

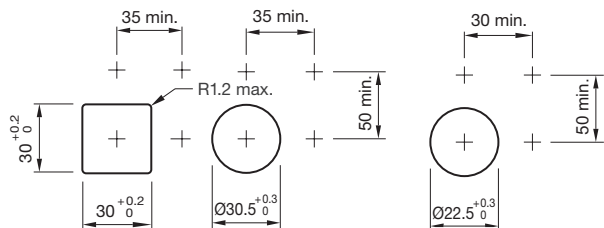
Bi-colour	Voltage	Current
Red/Green	24 VDC	15 mA
Red/Yellow	24 VDC	15 mA
Green/Yellow	24 VDC	15 mA

Single-LED	Voltage	Current
Red	24 VAC/DC	15 mA
Yellow	24 VAC/DC	15 mA
Green	24 VAC/DC	7 mA
Blue	24 VAC/DC	15 mA
White	24 VAC/DC	15 mA

For further voltages please see Series 10.

Mounting cut-outs

Flush design



Raised design

30 min.

Technical drawing of a shaft with a hole. The hole has a diameter of 22.5 mm with a tolerance of +0.3/0. The shaft has a diameter of 20 mm with a tolerance of +0.025/0. The hole is 50 mm deep.

Switching positions



2 positions



2 positions

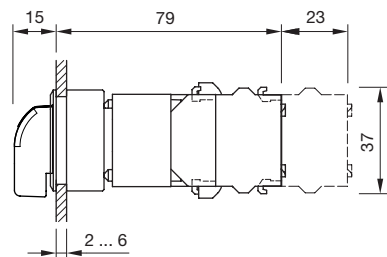


3 positions

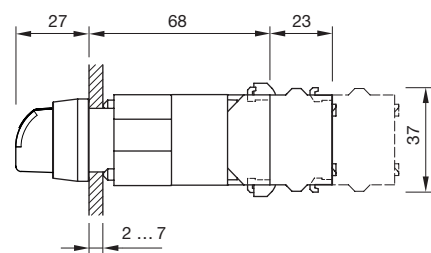
- Momentary
- Maintained
- Momentary/Momentary
- Maintained/Maintained
- Momentary/Maintained
- Maintained/Momentary

Dimensions

Flush design

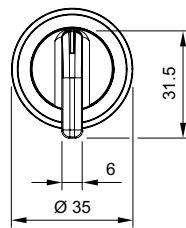


Raised design

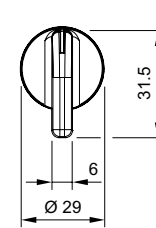


Long lever

Flush design

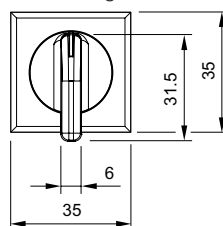


Raised design

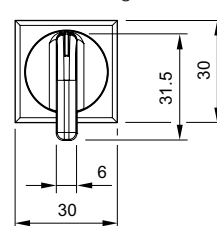


Front bezel square

Flush design

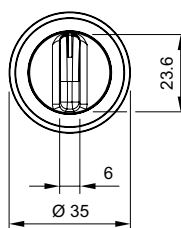


Raised design

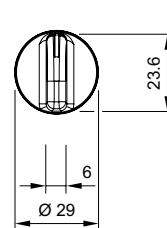


Short lever

Flush design

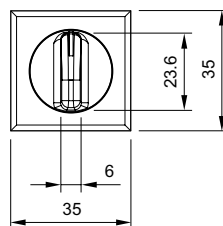


Raised design



Front bezel square

Flush design



Raised design

