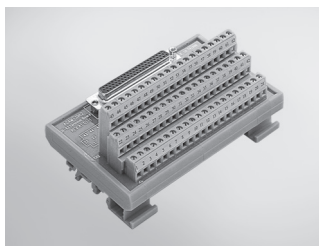


# ADAM-3900 Series

## DIN-rail Terminal Boards



### ADAM-3962

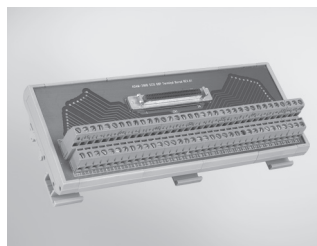
#### DB62 DIN-rail Wiring Board

##### Features

- Low cost universal DIN-rail mounting screw terminal module for DAQ cards with DB62 female connector
- Screw-clamp terminal blocks allow easy and reliable connections
- Case dimensions (W x L x H): 77.5 x 124.5 x 63.5 mm (3.1" x 4.9" x 2.5")

##### To Be Used With

PCI-1762



### ADAM-3968

#### 68-pin DIN-rail SCSI Wiring Board

##### Features

- Low cost universal DIN-rail mounting screw terminal module for industrial applications with 68-pin SCSI female connector
- Case dimensions (W x L x H): 85.6 x 191.2 x 51 mm

##### To Be Used With

PCI-1710U/UL, PCI-1710HGU, PCI-1711U/UL, PCI-1712/L, PCI-1716/L, PCI-1741U, PCI-1742U, PCI-1747U, PCI-1721, PCI-1723, PCI-1751, PCI-1753, PCI-1723, PCI-1780U



### ADAM-3968/20

#### 68-pin SCSI to 3 20-pin Box Header Board

##### Features

- Low cost universal DIN-rail mounting screw terminal module for PC-LabCard™ products with 68-pin SCSI connectors
- Converts one 68-pin SCSI connector to three 20-pin connectors
- Case dimensions (W x L x H): 77.5 x 80 x 54.3 mm (3.1" x 3.2" x 2.1")

##### To Be Used With

PCI-1751, PCI-1753



### ADAM-3968/50

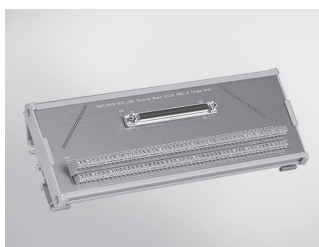
#### 68-pin SCSI to 2 50-pin Box Header Board

##### Features

- Low cost universal DIN-rail mounting screw terminal module for PC-LabCard™ products with 68-pin SCSI connectors
- Converts one 68-pin SCSI connector to two 50-pin Opto-22 compatible box headers
- Case dimensions (W x L x H): 77.0 x 101.0 x 54.3 mm (3.0" x 4.0" x 2.1")

##### To Be Used With

PCI-1751, PCI-1753



### ADAM-39100

#### 100-pin DIN-rail SCSI Wiring Board

##### Features

- Low cost universal DIN-rail mounting screw terminal module for industrial applications with 100-pin SCSI female connector
- Case dimensions (W x L x H): 80 x 230 x 42 mm (3.14" x 9.05" x 1.65")

##### To Be Used With

PCI-1240U, PCI-1755

# Mouser Electronics

Authorized Distributor

Click to View Pricing, Inventory, Delivery & Lifecycle Information:

[Advantech:](#)

[ADAM-3968-AE](#)