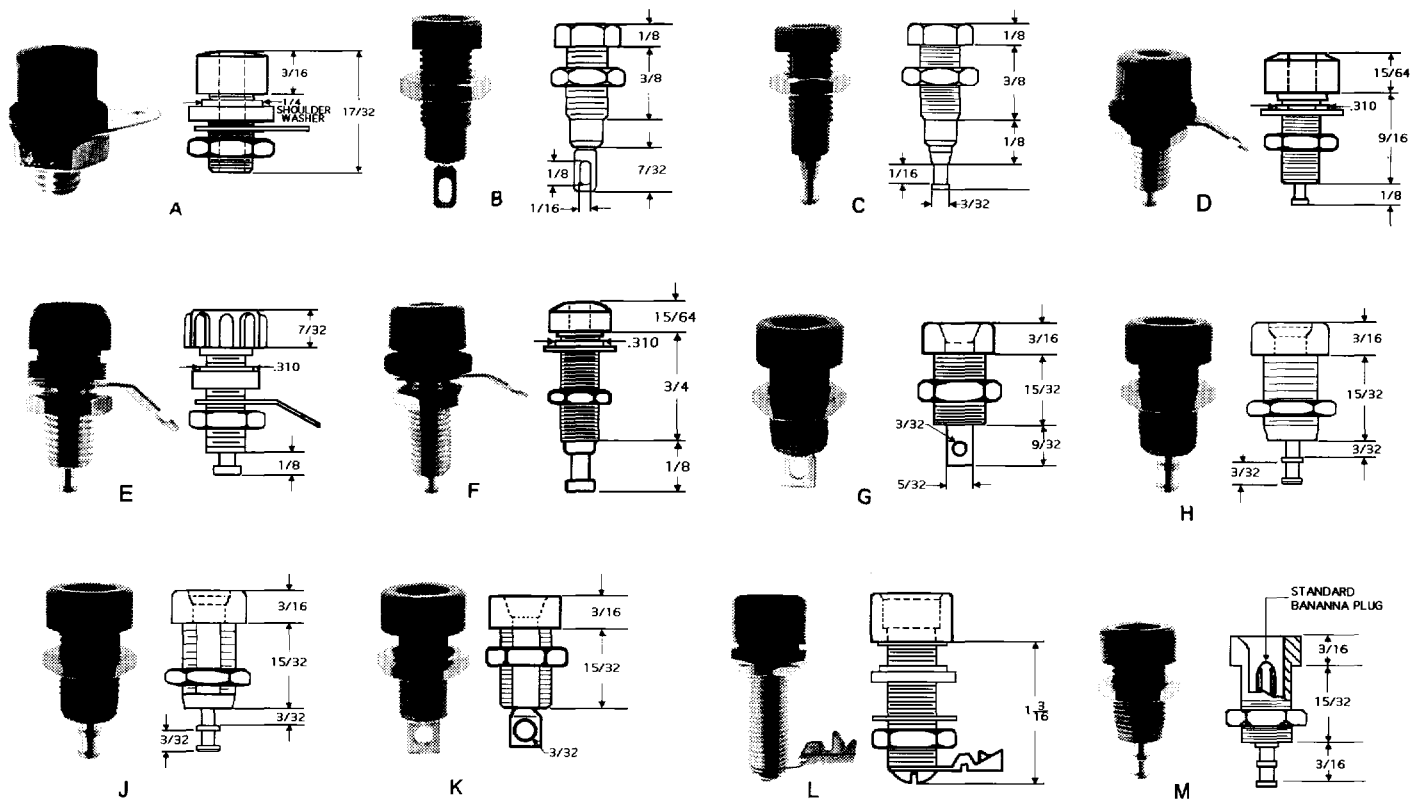


INSULATED BANANA JACKS



BODY: Metal body jacks are Brass, Nickel-plated.

MOUNTING: Jacks mount and are insulated from panel in 5/16" holes. Metal body jacks can be conductive-to-panel mounted in 1/4" holes. All are held with nut supplied.

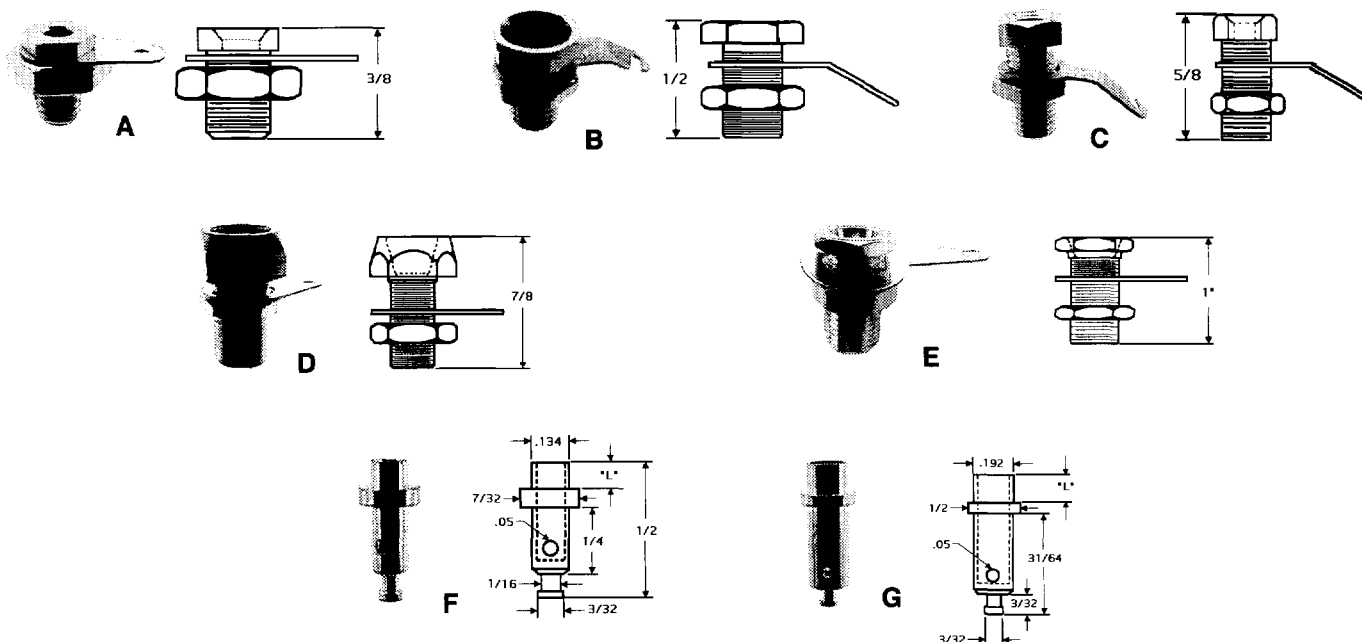
WIRING: Wire wraps and solders around turret, or through hole in interior contact. Wire can be soldered to lug supplied on metal body jacks.

RATING: 15 Amps AC for 10°C temperature rise, continuous duty. Voltage 1 KVAC.

COLORS:
A: Available in 6 colors. Add color number as suffix to part number.
-101 White -102 Red -103 Black -104 Green -105 Blue -107 Yellow
B: Available in 10 colors. Add color number as suffix to part number.
-101 White -102 Red -103 Black -104 Green -105 Blue
-106 Orange -107 Yellow -108 Brown -112 Violet -113 Gray

PART NO.	ILLUS.	TYPE	HEAD DIA.	HEAD HEIGHT	BODY LENGTH	THREAD	I.D.	COLOR CODE	INSULATING MATERIAL
196	A	Miniature, Metal Body	5/16	3/16	11/32	10-32	.104	-102 -103	Nylon
1458	B	Miniature, All Insul.		1/8	5/8	1/4-32		B	Polycarbonate
1459	C								
205	D	Standard, Metal Body	7/16	15/64	9/16		.161	A	Nylon
221	E	Comb. Std Ban/Tip Jack Metal Body	3/8	7/32	23/32	.161/ .080			
206	F			15/64	3/4				
1508	G	Standard, All Insul.	7/16	3/16	15/32	5/16-32	.161	B	Polycarbonate
1498	H	Round Body							
1499	J	Standard, All Insul.							
1509	K	"D" Body							
286	L	Giant	5/8	3/8	13/16	3/8-24	9/32	-102 -103	Nylon
9351	M	Safety	7/16	3/16	21/32	5/16-32	1/4		Polycarbonate

UNINSULATED BANANA JACKS



THREADED BODIES

BODY: Hex Brass, Nickel Plated

MOUNTING: Threaded body held to panel with nut supplied.

WIRING: Solders to lug between nut and panel (supplied).

PART NO.	ILLUS.	TYPE	HEAD DIA.	HEAD HEIGHT	BODY LENGTH	THREAD	I.D.
195	A	Miniature	1/4	1/16	5/16	10-32	.104
101	B	Standard	3/8	3/32	13/32	1/4-32	.161
109	C		5/16	1/8	1/2		
187	D	Giant	1/2	9/32	19/32	3/8-24	.275
157	E		5/8	1/8	7/8	1/2-20	

RIVET TYPES

BODY: Brass, Tin-Plated

MOUNTING: Body is rivet-curved in hole indicated in panel.

WIRING: Circuit is completed on both sides when jack is used in printed circuit board. Wire also solders to turret at rear of jack, or into side hole.

PART NO.	ILLUS.	TYPE	MNTG. HOLE	LENGTH "L"	PANEL THKNS.	I.D.
193	F	Miniature	.140	.093	1/32	.104
2076				.109	1/16	
2077				.135	3/32	
2078				.165	1/8	
2079	G	Standard	.196	.109	1/16	.161
2080				.135	3/32	
2081				.165	1/8	