

PLEASE CHECK WWW.MOLEX.COM FOR LATEST PART INFORMATION

Part Number: [0482016063](#)
Status: **Active**
Description: D-Subminiature Shielded I/O PCB Female Receptacle, Right Angle, Through Hole, 9 Circuits, #4-40 Flush Insert, 2 #4-40 Hex Internal Thread Screws Assembled, Gold (Au) Flash Plating, PCB Thickness 1.60mm(.063"), Lead Free

Documents:

[3D Model](#)
[Drawing \(PDF\)](#)

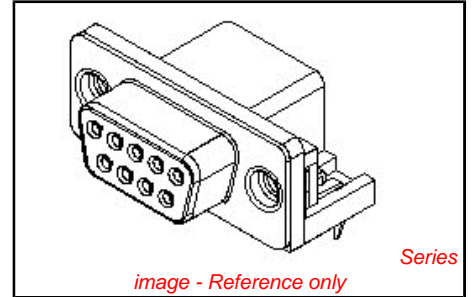
[Product Specification PS-48201-001 \(PDF\)](#)
[RoHS Certificate of Compliance \(PDF\)](#)

General

Product Family	I/O Connectors
Series	48201
Application	Wire-to-Board
Component Type	Receptacle
Product Name	D-Sub
Type	N/A

Physical

Boot Color	N/A
Circuits (Loaded)	9
Circuits (maximum)	9
Color - Resin	Black
Durability (mating cycles max)	600
Gender	Female
Lock to Mating Part	Yes
Material - Metal	Phosphor Bronze
Material - Plating Mating	Gold
Material - Plating Termination	Tin
Material - Resin	Polyester
Number of Rows	2
Orientation	Right Angle
PC Tail Length (in)	0.125 In
PC Tail Length (mm)	3.18 mm
PCB Locator	No
PCB Retention	Yes
PCB Thickness Recommended (in)	0.063 In
PCB Thickness Recommended (mm)	1.60 mm
Packaging Type	Tray
Panel Mount	Yes
Pitch - Mating Interface (in)	0.054 In
Pitch - Mating Interface (mm)	1.38 mm
Pitch - Term. Interface (in)	0.054 In
Pitch - Term. Interface (mm)	1.38 mm
Plating min: Mating (µin)	2
Plating min: Mating (µm)	0.05
Plating min: Termination (µin)	100
Plating min: Termination (µm)	2.54
Polarized to Mating Part	Yes
Polarized to PCB	Yes
Ports	1
Surface Mount Compatible (SMC)	No
Temperature Range - Operating	-55°C to +85°C
Termination Interface: Style	Through Hole
Waterproof / Dustproof	No
Wire Size AWG	N/A



EU RoHS
ELV and RoHS
Compliant
REACH SVHC
Not Reviewed
Halogen-Free
Status
Not Reviewed

China RoHS



Need more information on product environmental compliance?

Email productcompliance@molex.com
For a multiple part number RoHS Certificate of Compliance, [click here](#)

Please visit the [Contact Us](#) section for any non-product compliance questions.

Search Parts in this Series
[48201Series](#)

Mates With
[48202 D-Sub Male Plug](#)

Electrical

Current - Maximum per Contact	1A
Shield Type	Full Shield
Shielded	Yes
Voltage - Maximum	300V DC

Material Info**Reference - Drawing Numbers**

Product Specification	PS-48201-001
Sales Drawing	SD-48201-001

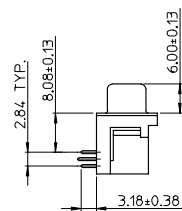
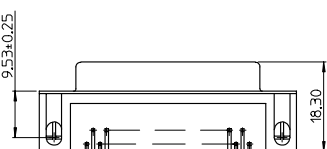
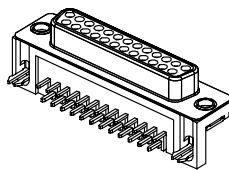
This document was generated on 03/31/2010

PLEASE CHECK WWW.MOLEX.COM FOR LATEST PART INFORMATION

SCREW BE ASSEMBLED

SCREW BE ATTACHED



FLUSH INSERT ONLY



Technical drawing of a PCB edge connector. The drawing shows a cross-section of the connector with the following dimensions and tolerances:


- Ø1.09**: Diameter of the top circular feature.
- Ø3.05**: Diameter of the main body.
- DIM E**: Total length of the connector.
- 1.38 TYP.**: Typical distance from the top edge to the start of the main body.
- 2.77 TYP.**: Typical distance from the start of the main body to the end.
- PCB EDGE**: Label for the right edge of the connector.
- 9.53**: Thickness of the PCB.
- DIM F**: Distance from the left edge to the center of the top feature.
- DIM C ±0.13**: Distance from the left edge to the center of the main body.
- 2.84 TYP.**: Typical distance from the center of the main body to the right edge.

REV	DESCRIPTION
APPR:WWSCHANG	2005/05/04
CHKD:	2005/05/04
DRWN:JHEN12	2005/04/29
EC NO: SHZ005920898	
L/F FOR 87204-6***	

QUALITY SYMBOLS	
	=0
	=0

GENERAL TOLERANCES (UNLESS SPECIFIED)		
	mm	INCH
4 PLACES	± .---	± ---
3 PLACES	± ---	± ---
2 PLACES	± 0.25	± ---
1 PLACE	± 0.25	± ---
ANGULAR ± 3 °		
DRAFT WHERE APPLICABLE MUST REMAIN WITHIN DIMENSIONS		

DIMENSION STYLE	
MM ONLY	
DRAWN BY	DATE
LINDA	05/04/11
CHECKED BY	DATE
ALLEN	05/04/11
APPROVED BY	DATE
MWSCHANG	05/04/11
MATERIAL NO.	
SEE TABLE	
SIZE	THIS DRAWING CONTAINS
A4	INCORPORATED AND

SCALE 1:1	DESIGN UNITS METRIC	 THIRD ANGLE PROJECTION
TITLE		
STANDARD D-SUB FEMALE TYPE FORK BOARD LOCK (LEAD FREE VERSION)		
MOLEX MOLEX INCORPORATED		
DOCUMENT NO. SD-48201-001		SHEET NO. 1 OF 1
TAINS INFORMATION THAT IS PROPRIETARY TO MOLEX SHOULD NOT BE USED WITHOUT WRITTEN PERMISSION		

NOTE:

1. MATERIAL:
HOUSING: POLYESTER GLASS FILLED,UL94-V0,COLOR:BLACK
TERMINAL #PHOSPHOR BRONZE
METAL SHELL: SPCC
BOARD LOCK: BRASS
SCREW: BRASS
2. PLATING:
TERMINAL:
CONTACT AREA: SEE PART NUMBER LEGEND
SOLDER TAIL: TIN(SN), THICKNESS-100 MICREINCH MIN/2.54 MICROMETER MIN,
UNDER PLATE: NICKEL(NI),THICKNESS-50 MICRONINCH MIN/127 MICROMETER MIN,
METAL SHELL: TIN (SN),THICKNESS-100 MICREINCH MIN/2.54 MICROMETER MIN,
UNDER PLATE: COPPER(CU),THICKNESS-50 MICRONINCH MIN/127 MICROMETER MIN,
BOARD LOCK: TIN (SN),THICKNESS-100 MICREINCH MIN/2.54 MICROMETER MIN,
SCREW: NICKEL(NI),THICKNESS-50 MICRONINCH MIN/127 MICROMETER MIN.
3. RECOMMENDED PCB THICKNESS: 1.60-1.05mm
4. PRODUCT SPECIFICATION: REFER TO PS-48201-001
5. TEST SUMMARY: REFER TO TS-48201-001
6. PACKAGING SPECIFICATION: REFER TO PK-48201-001
7. LEAD FREE AND ROHS COMPLIANCE PRODUCT

PART NUMBER LEGEND

48201-6

CKT SIZE PLATING SCREW OPTION

0:9
1:15
3:25
4:37
5:25 HOUSING COLOR
BURGUNDY(PANTONE#235C)

1:2 PCS #4-40 ROUND INNER THREAD SCREW RIVETTED
2:FLUSH INSERT ONLY
3:2 PCS #4-40 INNER THREAD SCREW ASSEMBLED
4:2 PCS M2.6 INNER THREAD SCREW ASSEMBLED
5:2 PCS M3 INNER THREAD SCREW ASSEMBLED
6:2 PCS #4-40 HEX INNER THREAD SCREW ATTACHED
7:2 PCS M2.6 INNER THREAD SCREW ATTACHED
8:2 PCS M3 INNER THREAD SCREW ATTACHED

4:30 MICRO INCH MINIMUM GOLD IN CONTACT AREA
5:15 MICRO INCH MINIMUM GOLD IN CONTACT AREA
6:GOLD FLASH IN CONTACT AREA