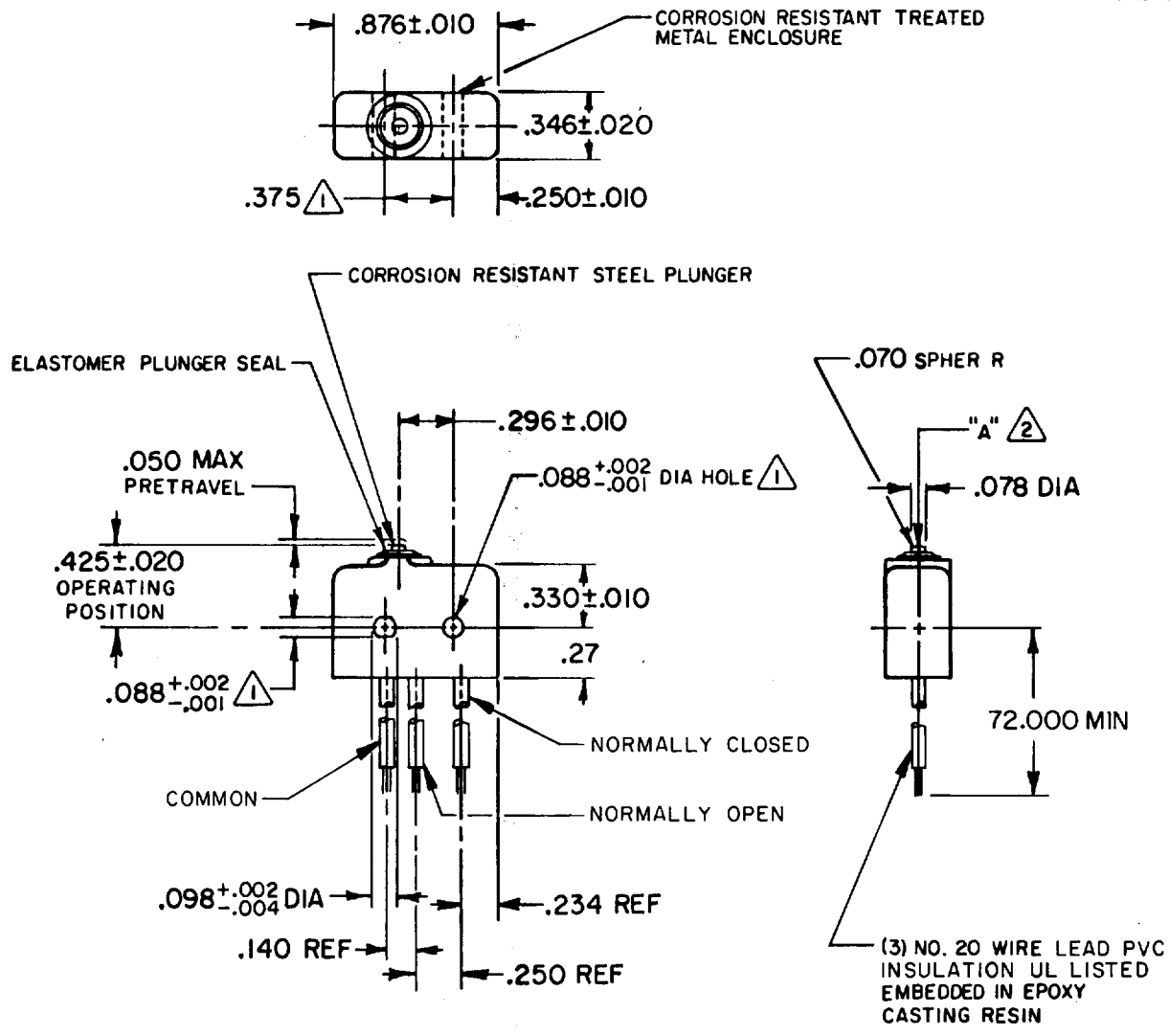
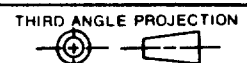


M 4SEI-6
 DRAWING NUMBER
 8
 ISSUE
 REVISIONS
 A RE-INST PR11739 TSK 9 DEC 82
 B CO-54473 D J S 2 FEB 84
 CHECK
 13 DEC 82
 TSK 9 DEC 82
 DRAWN
 FO-52848-A



- NOTES**
- $\triangle 1$ - MOUNTING HOLES WILL ACCEPT $.087$ MAX DIA PINS OR SCREWS ON $.375 \pm .002$ CENTERS
 - $\triangle 2$ ACTUATION IN LINE WITH ARROW "A" IS RECOMMENDED
 - $\triangle 3$ WEIGHT OF SWITCH ONLY IS $.26$ OZ MAX, WEIGHT OF SWITCH WITH WIRE LEADS IS 2.5 OZ MAX

THIS DRAWING COVERS A PROPRIETARY ITEM AND IS THE PROPERTY OF MICRO SWITCH, A DIVISION OF HONEYWELL. THIS DRAWING IS NOT TO BE COPIED OR USED WITHOUT THE APPROVAL OF MICRO SWITCH.



CHARACTERISTICS	
OPERATING FORCE	5-17 OZ
RELEASE FORCE	4 OZ MIN
RELEASE TRAVEL	.004 MIN
DIFFERENTIAL TRAVEL	.004 MAX
OVERTRAVEL	.003 MIN

ELECTRICAL DATA	
CONTACT ARRANGEMENT S P D T	
L4	
5A 250 VAC	

SCALE FULL			
DO NOT SCALE PRINT			
TOLERANCES			
APPLY TO DESIGN UNITS. CONVERSIONS ARE ONLY FOR REFERENCE. UNLESS NOTED, TOLERANCES ARE \pm			
NO PLACES	DIM. IN	TOL. mm/in	DIM. IN
ONE PLACE	X	1/64	X
TWO PLACES	X, XX	0.4/010	X, XX
THREE PLACES	X, XX	0.10/005	X, XX
ANGLES	X, XXX		X, XXX
DESIGN UNITS		SI METRIC	US CUSTOMARY
		<input type="checkbox"/>	<input checked="" type="checkbox"/>
WEIGHT		$\triangle 3$	

Mouser Electronics

Authorized Distributor

Click to View Pricing, Inventory, Delivery & Lifecycle Information:

[Honeywell:](#)

[4SE1-6](#)