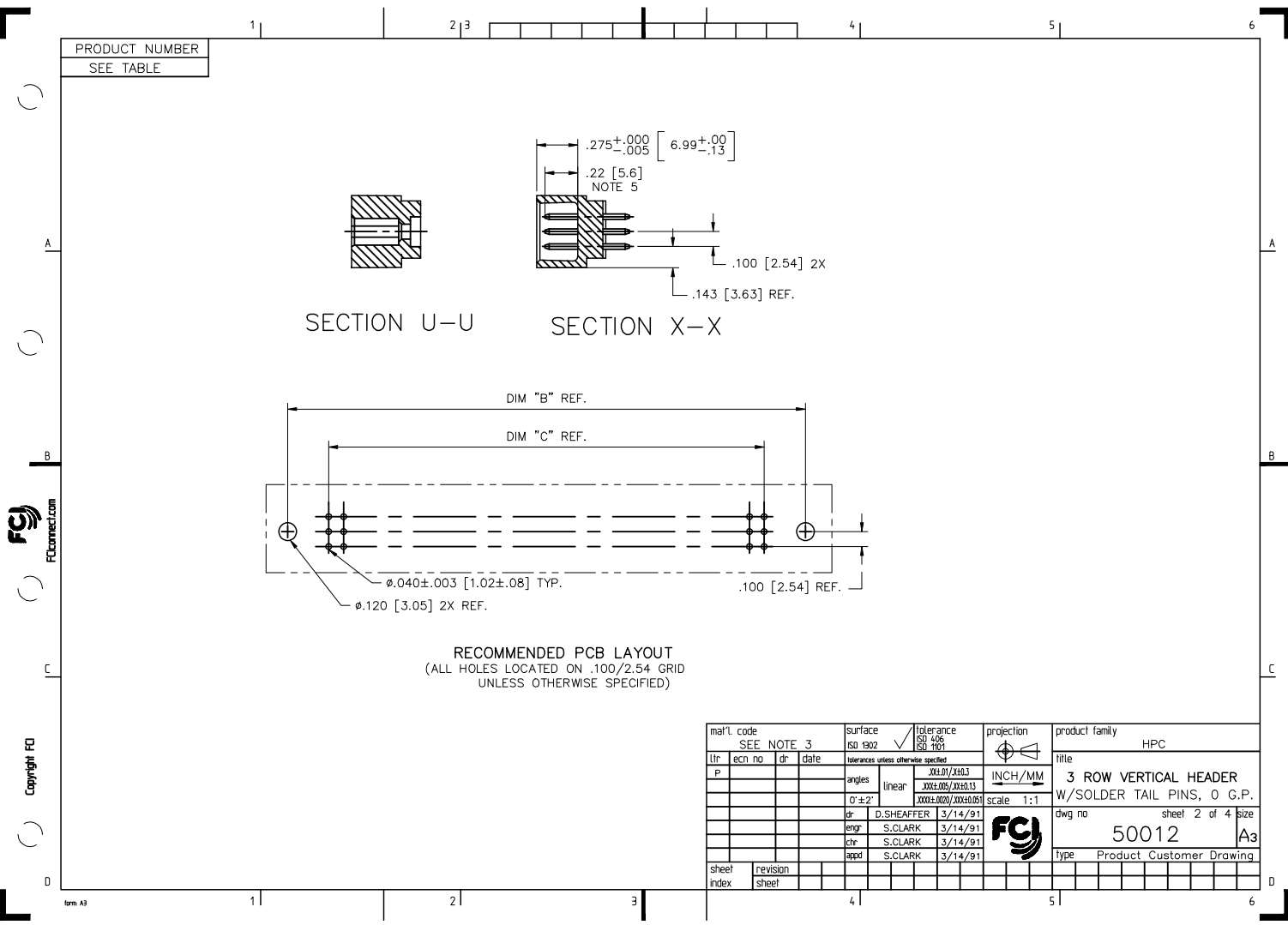


mat'l. code SEE NOTE 3				surface ISO 1302	tolerance ISO 406 ISO 1001	projection	product family HPC
lfr	ecn no	dr	date	tolerances unless otherwise specified		INCH/MM	title
H	V40286	PDP	1/20/94	angles	linear	scale 1:1	3 ROW VERTICAL HEADER
J	V90017	HTB	1/7/99				W/SOLDER TAIL PINS, 0 G.P.
K	V00272	JWS	2/1/00	0'±2'			dwg no 50012
L	V05-0753	DAI	10/03/05	dr	D.SHEAFFER	3/14/91	sheet 1 of 4
M	V05-1039	DAI	11/11/05	engr	S.CLARK	3/14/91	size A3
N	M06-0283	MHT	7/27/06	chr	S.CLARK	3/14/91	
P	M09-0029	MHT	2/20/09	appd	S.CLARK	3/14/91	
sheet	revision	P	P	P	P		type Product Customer Drawing
index	sheet	1	2	3	4		



PRODUCT NUMBER
SEE TABLE

50012-XX010 AND 50012-XX010LF ONLY

C B A	1	5	10	15	20	25	30
	B	B					
	B	B					

PIN
1

31	35	40	45	50	55
					B B
					B B
					B B

CUSTOMER NOTE: END GUIDE PINS ARE SUGGESTED IN YOUR APPLICATION TO
PREVENT STUBBING OF THE .260 MATING LENGTH SIGNAL PINS.

NOTES FOR 50012-XX010 AND 50012-XX010LF ONLY:

- ALL POSITIONS ARE LOADED WITH "A", EXCEPT AS SHOWN.
- COLUMN 1, ROW A IS DESIGNATED AS SIGNAL PIN 1, AS VIEWED FROM THE MATING FACE.
- SIGNAL DATA FOR 50012-XX010 AND 50012-XX010LF:
SIZE 3 X 55
TOTAL NO. OF POSITIONS - 165
NO. OF POSITIONS LOADED - 165

ITEM KEY	QTY.	MATING LENGTH	TAIL LENGTH
A	153	.180 / 4.57	.177 / 4.50
B	12	.260 / 6.60	.177 / 4.50

mat'l. code SEE NOTE 3		surface ISO 1902	tolerance ISO 406 ISO 1001	projection 	product family HPC
lfr	ecn no	dr	date	angles	linear
P				linear	linear
				0'±2'	linear
				dr	D.SHEAFFER 3/14/91
				engr	S.CLARK 3/14/91
				chr	S.CLARK 3/14/91
				appd	S.CLARK 3/14/91
sheet index	revision sheet				
title 3 ROW VERTICAL HEADER W/SOLDER TAIL PINS, 0 G.P.		dwg no 50012		sheet 3 of 4	size A3
type Product Customer Drawing					

PDM: Rev:P

STATUS:Released

Printed: Feb 06, 2010

PRODUCT NUMBER	NUMBER OF POSITIONS SEE NOTE 2	TAIL LENGTH ±.015/0.38	TERMINAL PLATING NOTE 9
50012-1YYYA	YYY	.177/4.50	30μ"/.76μ GOLD
50012-1YYC	YYY	.533/13.54	30μ"/.76μ GOLD
50012-1YYD	YYY	.733/18.62	30μ"/.76μ GOLD
50012-1YYG	YYY	.250/6.35	30μ"/.76μ GOLD
50012-1YYJ	YYY	.120/3.05	30μ"/.76μ GOLD
50012-3YYA	YYY	.177/4.50	50μ"/1.27μ GOLD
50012-3YYC	YYY	.533/13.54	50μ"/1.27μ GOLD
50012-3YYD	YYY	.733/18.62	50μ"/1.27μ GOLD
50012-3YYG	YYY	.250/6.35	50μ"/1.27μ GOLD
50012-3YYJ	YYY	.120/3.05	50μ"/1.27μ GOLD
50012-5YYA	YYY	.177/4.50	30μ"/.76μ GXT
50012-5YYALF	YYY	.177/4.50	30μ"/.76μ GXT
50012-5YYB	YYY	.190/4.82	30μ"/.76μ GXT
50012-5YYBLF	YYY	.190/4.82	30μ"/.76μ GXT
50012-5YYC	YYY	.533/13.54	30μ"/.76μ GXT
50012-5YYCLF	YYY	.533/13.54	30μ"/.76μ GXT
50012-5YYD	YYY	.733/18.62	30μ"/.76μ GXT
50012-5YYDLF	YYY	.733/18.62	30μ"/.76μ GXT
50012-5YYG	YYY	.250/6.35	30μ"/.76μ GXT
50012-5YYGLF	YYY	.250/6.35	30μ"/.76μ GXT
50012-5YYJ	YYY	.120/3.05	30μ"/.76μ GXT
50012-5YYJLF	YYY	.120/3.05	30μ"/.76μ GXT
50012-XX010	165	SEE SHEET 3	30μ"/.76μ Au
50012-XX010LF	165	SEE SHEET 3	30μ"/.76μ GXT

NOTES:

- ① PRODUCT NUMBERING CODE:
50012 - X YYY Z LF
LEAD FREE (OPTIONAL)
TAIL LENGTH SEE TABLE
NO. OF POSITIONS SEE NOTE 2
PLATING SEE TABLE
BASE NUMBER

PRODUCT NUMBERING CODE FOR
SELECT LOAD/FMLB PART NUMBERS:
50012 - XYYYY LF
LEAD FREE (OPTIONAL)
SEQUENCE NUMBER
ALWAYS "XX"
BASE NUMBER

- ② THIS PRODUCT IS CONFIGURED IN SIZES OF 6 thru 80
COLUMNS IN INCREMENTS OF ONE.
i.e.: 6,7,8,9,.....78,79,80.

- ③ HOUSING MATERIAL: GLASS AND MINERAL FILLED
HIGH TEMP. THERMOPLASTIC. FLAME RETARDANT PER
UL94V-0. COLOR: BLACK.
PIN MATERIAL: PHOS BRONZE

- ④ COMPANY NAME, PART NUMBER AND LOT CODE TO APPEAR ON
THIS SURFACE PER BUS-12-108.
- ⑤ REFERENCE 50804 FOR FIRST MATE LAST BREAK AVAILABLE
OPTIONS AND FOR SELECTIVELY LOADED HEADER WORKSHEET.
- ⑥ LENGTH FORMULAS:
DIM "A" .100/2.54 x NO. OF COLUMNS +.75/19.1
DIM "B" .100/2.54 x NO. OF COLUMNS +.450/11.43
DIM "C" .100/2.54 x NO. OF COLUMNS -.100/2.54
7. THIS PRODUCT (WITH "LF" SUFFIX) MEETS EUROPEAN UNION DIRECTIVES AND OTHER COUNTRY
REGULATIONS AS DESCRIBED IN GS-22-008.
8. THIS HOUSING WILL WITHSTAND EXPOSURE TO 260° C PEAK TEMPERATURE FOR
10-30 SECONDS IN A CONVECTION, INFRA-RED OR VAPOR PHASE REFLOW OVEN.
- ⑨ PLATING OPTIONS:
MAY BE EITHER GOLD OR GXT PLATED AT MANUFACTURE'S OPTION

mat'l code SEE NOTE 3		surface ISO 1902	tolerance ISO 406 ISO 1001	projection 1:1	product family HPC
lfr	ecn no	dr	date	title 3 ROW VERTICAL HEADER W/SOLDER TAIL PINS, 0 G.P.	
P				angles	linear
				0'±2'	linear
				dr	D.SHEAFFER 3/14/91
				engr	S.CLARK 3/14/91
				chr	S.CLARK 3/14/91
				appd	S.CLARK 3/14/91
sheet index	revision sheet				