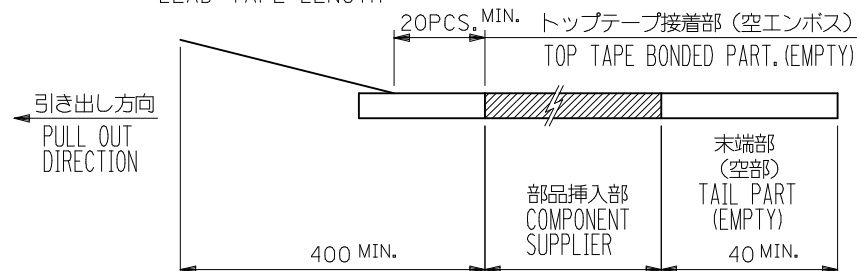
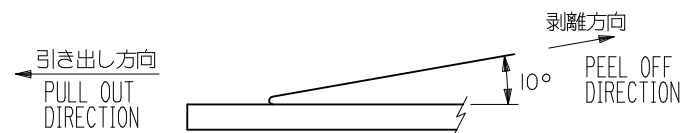


# NOTES

- 製品詳細寸法については、図面 SD-500288-003 を参照下さい。  
PRODUCT'S DETAIL DIMENSIONS, PLEASE REF. SD-500288-003.
- 梱包数量：1500個/リール  
PACKAGE SPECIFICATION: 1500 PCS./REEL
- リードテープ長さ  
LEAD TAPE LENGTH

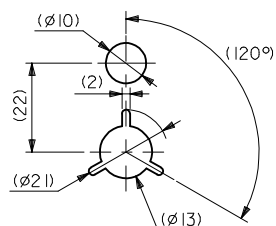
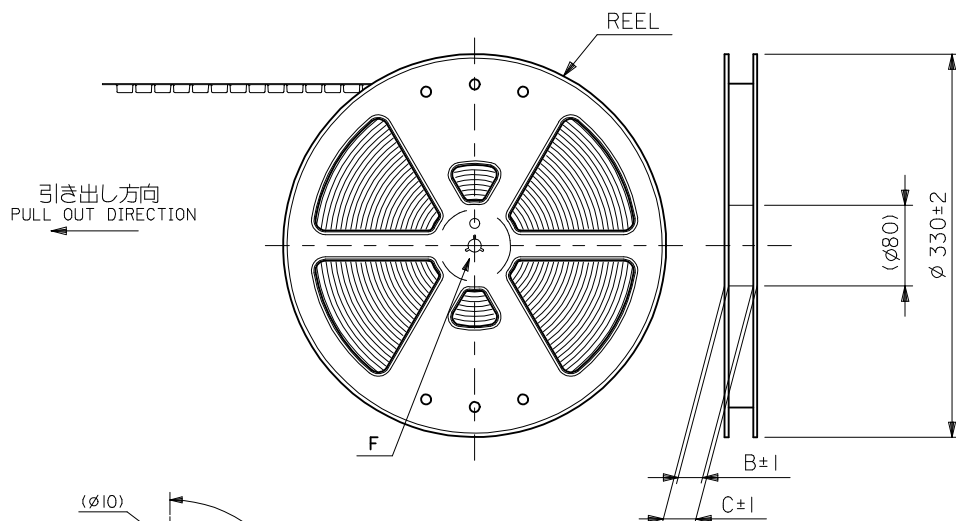


- トップテープの剥離強度：0.1N～1.3N {10gf～130gf}  
(剥離方向は下図参照)  
尚、本規格値は出荷時に適用。(但し、輸送時に剥離が発生しないこと。)  
PEELING FORCE OF TOP TAPE : 0.1N - 1.3N (10gf - 130gf)  
(PEELING DIRECTION AS SHOWN IN FOLLOWING FIGURE)  
THIS REQUIREMENT SHOULD BE APPLIED AT SHIPMENT.  
PEEL OFF SHOULD NOT BE ALLOWED, DURING TRANSPORTATION.



- 材料 (MATERIAL)  
キャリアテープ (CARRIER TAPE) : ポリプロピレン (POLYPROPYLENE)  
トップテープ (TOP TAPE) : PET, PE, PEF  
リール (REEL) : ポリスチレン (POLYSTYRENE) <リサイクル材を含む>  
<RECYCLE MATERIAL CONTAINED>

- 本製品は 500288-\*\*\*0 の鉛フリー品である。  
THIS PRODUCT IS LEAD FREE OF 500288-\*\*\*0.



DETAIL F

REVISED		GENERAL TOLERANCES (UNLESS SPECIFIED)		DIMENSION STYLE		SCALE		500288-***70		MODEL NO.	
EC NO: J2009-1055		10 UNDER ±0.2		MM ONLY		---		DESIGN UNITS		THIRD ANGLE PROJECTION	
DRWN: NAKAMURA		10 OVER 30 UNDER ±0.25		DRAWN BY		DATE		METRIC			
CH'KD: T. HARIYAMA		30 OVER ±0.3		T. UENO		'04/04/05					
APPR: NUKITA		ANGULAR ±3 °		CHECKED BY		DATE					
		DRAFT WHERE APPLICABLE MUST REMAIN WITHIN DIMENSIONS		M. SASAO		'04/04/05					
				APPROVED BY		DATE					
				M. SASAO		'04/04/05					
				MATERIAL NO.		DOCUMENT NO.					
				SEE SHEET 2							
				SIZE							
				A3							

10

9

8

7

6

5

4

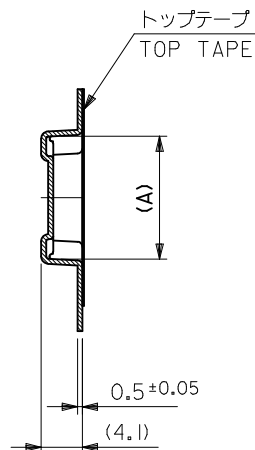
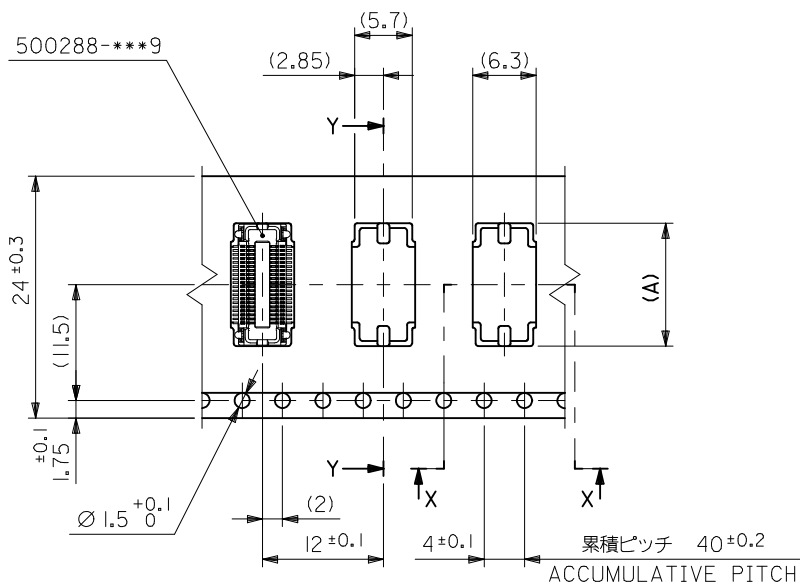
3

2

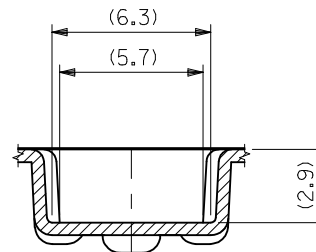
1

引き出し方向  
PULL OUT DIRECTION


500288-\*\*\*9

SECT. Y-Y

24mm幅キャリアテープ  
24mm WIDTH CARRIER TAPE

SECT. X-X

24	29.4	25.4	12.2	500288-0470	40
キャリアテープ幅 CARRIER TAPE WIDTH	C	B	A	MATERIAL NO.	CKT.

REVISED EC NO: J2009-1055 DRWN: NAKAMURA CHKD: T. HARUYAMA APPR: NUKITA	DESCRIPTION	GENERAL TOLERANCES (UNLESS SPECIFIED)		DIMENSION STYLE MM ONLY		SCALE ---	DESIGN UNITS METRIC		MODEL NO. THIRD ANGLE PROJECTION
		10 UNDER	± 0.2	DRAWN BY T. UENO	DATE '04/04/05	TITLE EMBSTP PKG FOR 0.4 B-T0-B REC HSG ASSY W/O BOSS -LEAD FREE- MOLEX INCORPORATED			
		10 OVER 30 UNDER	± 0.25	CHECKED BY M. SASAO	DATE '04/04/05				
		30 OVER	± 0.3	APPROVED BY M. SASAO	DATE '04/04/05				
		ANGULAR ±3 °		MATERIAL NO.		DOCUMENT NO.		SHEET NO.	
	DRAFT WHERE APPLICABLE MUST REMAIN WITHIN DIMENSIONS		SEE TABLE		SD-500288-004		2 OF 2		
B	REV	THIS DRAWING CONTAINS INFORMATION THAT IS PROPRIETARY TO MOLEX INCORPORATED AND SHOULD NOT BE USED WITHOUT WRITTEN PERMISSION							

9

8

7

6

5

4

3

2