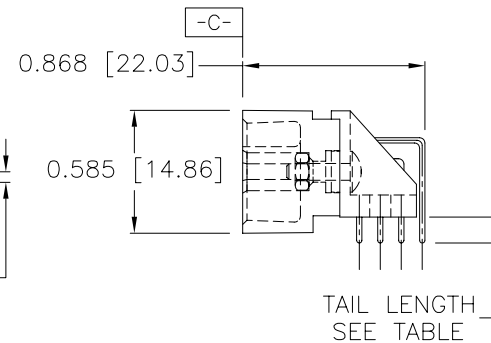
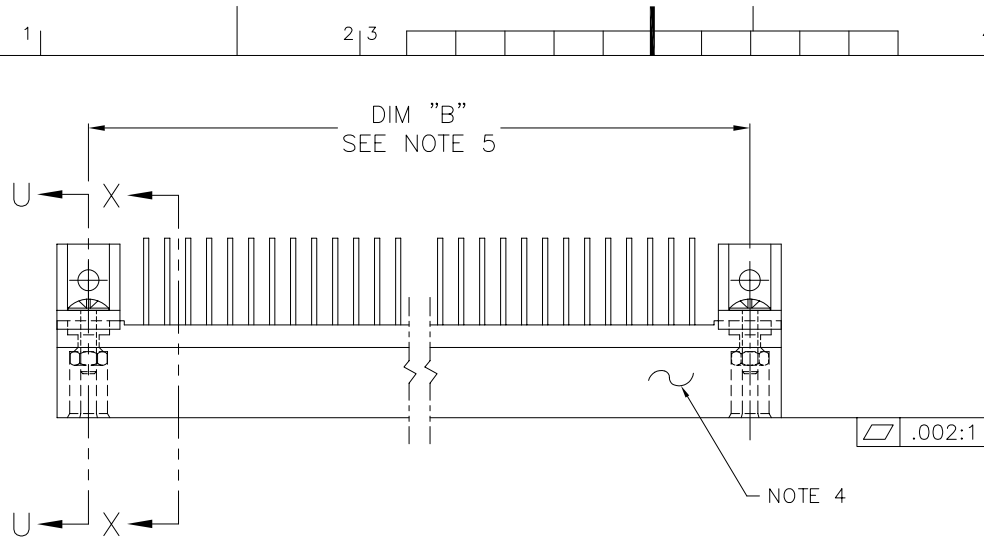



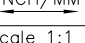


FCIconnect.com

Copyright FCI

PRODUCT NUMBER
SEE TABLE



mat'l. code SEE NOTE 3					surface ISO 1302 ✓		tolerance ISO 406 ISO 1101		projection 		product family HPC																																																																																																																																																																																																																																																																																																																																																						
ltr	ecn	no	dr	date	tolerances unless otherwise specified						title 4 ROW R/A HEADER SOLDER TO BOARD, 0 G.P.	dwg no	sheet 1 of 3	size A3																																																																																																																																																																																																																																																																																																																																																			
J	V90523	HTB	3/1/99	angles	linear																																																																																																																																																																																																																																																																																																																																																												

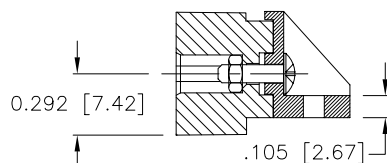
form: A3



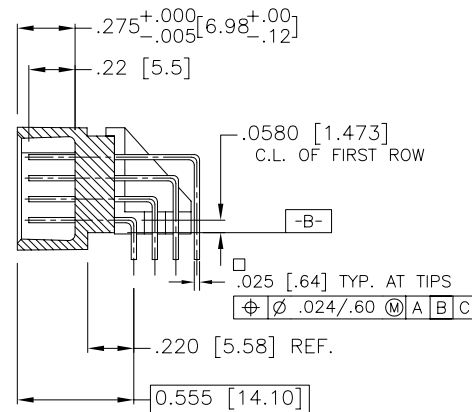
FCIconnect.com

Copyright FCI

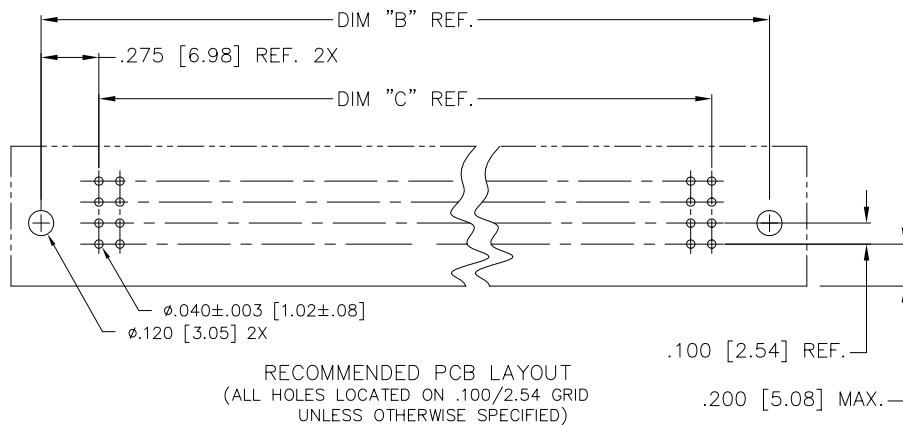
PRODUCT NO.
SEE TABLE



SECTION U-U



SECTION X-X



RECOMMENDED PCB LAYOUT
(ALL HOLES LOCATED ON .100/2.54 GRID
UNLESS OTHERWISE SPECIFIED)

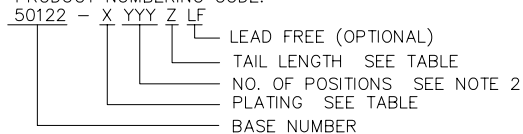
mat'l. code SEE NOTE 3		surface ISO 1302 ✓	tolerance ISO 406 ISO 1101	projection INCH/MM	product family HPC
ltr	ecn	no	dr	date	title
N					4 ROW R/A HEADER SOLDER TO BOARD, 0 G.P.
					dwg no
					sheet 2 of 3 size
					A3
					type
					Product Customer Drawing
sheet	revision				
index	sheet				

form: A3

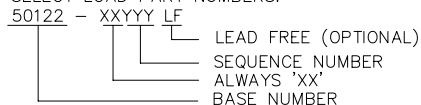
PRODUCT NUMBER	NUMBER OF POSITIONS SEE NOTE 2	TAIL LENGTH REF.	TERMINAL PLATING
50122 -1YYYY	YYY	.180/4.57	30μ"/.76μ GOLD
50122 -1YYYYJ	YYY	.120/3.05	30μ"/.76μ GOLD
50122 -3YYYYH	YYY	.180/4.57	50μ"/1.27μ GOLD
50122 -3YYYYJ	YYY	.120/3.05	50μ"/1.27μ GOLD
50122 -5YYYYH	YYY	.180/4.57	30μ"/.76μ GXT
50122 -5YYYYHLF	YYY	.180/4.57	30μ"/.76μ GXT
50122 -5YYYYJ	YYY	.120/3.05	30μ"/.76μ GXT
50122 -5YYYYJLF	YYY	.120/3.05	30μ"/.76μ GXT

NOTES:

1. PRODUCT NUMBERING CODE:




PRODUCT NUMBERING CODE FOR SELECT LOAD PART NUMBERS:



- THIS PRODUCT IS CONFIGURED IN SIZES OF 6 THRU 100 COLUMNS IN INCREMENTS OF ONE.
i.e.: 6,7,8,9,.....98,99,100.
- HOUSING MATERIAL: GLASS AND MINERAL FILLED HIGH TEMP. THERMOPLASTIC. FLAME RETARDANT PER UL94V-0. COLOR: BLACK.
PIN MATERIAL: PHOS. BRONZE
- MANUFACTURE'S NAME, P/N, AND LOT CODE TO APPEAR ON THIS SURFACE PER BUS-12-108.
- LENGTH FORMULAS:
DIM "A" = .100/2.54 x NO. OF COLUMNS + .75/19.1
DIM "B" = .100/2.54 x NO. OF COLUMNS + .450/11.43
DIM "C" = .100/2.54 x NO. OF COLUMNS - .100/2.54

- THIS PRODUCT (WITH "LF" SUFFIX) MEETS EUROPEAN UNION DIRECTIVES AND OTHER COUNTRY REGULATIONS AS DESCRIBED IN GS-22-008.
- THIS HOUSING WILL WITHSTAND EXPOSURE TO 260° C PEAK TEMPERATURE FOR 10-30 SECONDS IN A CONVECTION, INFRA-RED OR VAPOR PHASE REFLOW OVEN.

mat'l. code SEE NOTE 3				surface ISO 1302 ✓	tolerance ISO 406 ISO 1101	projection INCH/MM	product family HPC
ltr	ecr	no	dr	date	tolerances unless otherwise specified		title 4 ROW R/A HEADER SOLDER TO BOARD, 0 G.P.
N					angles linear .XX±.01/.3		
					0'±2' .XXX±.005/.13		
					.XXX±.0020/.051		
				dr	D.SHEAFFER 6/5/91	scale 1:1	dwg no sheet 3 of 3 size
				enr	S.CLARK 6/5/91		50122 A3
				chr	S.CLARK 6/5/91		
				appd	S.CLARK 6/5/91		type Product Customer Drawing
sheet index	revision sheet						

form: A3

Mouser Electronics

Authorized Distributor

Click to View Pricing, Inventory, Delivery & Lifecycle Information:

FCI:

[50122-5112JLF](#) [50122-1216J](#)