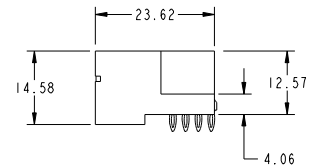
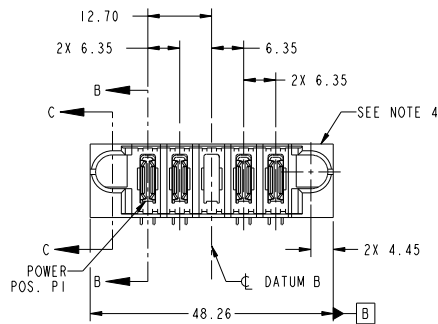


Tous droits strictement réservés. Reproduction ou communication à des tiers interdite sous quelque forme que ce soit sans autorisation écrite du propriétaire. Propriété de c FCI. Droits de reproduction FCI.



All rights strictly reserved. Reproduction or issue to third parties in any form whatever is not permitted without written authority from the proprietor. Property of FCI. Copyright FCI.

PRODUCT NO.	E1	P1	P2	P3	P4	P5	E2
51733-009- NOTE 3		PX	PX	X	PX	PX	



CODE	DIM "M" MATING LENGTH	CONTACT TYPE
X	OMITTED	OMITTED
PX	[N/A]	POWER

mat'l code				SEE NOTE		tolerances unless otherwise specified		CUSTOMER		FCI	
itr	ecn no.	dr	date	linear	0.X ±0.5	projection	0.XX ±0.25	title	5P	www.fciconnect.com	
A	D609-0372	WL	11/29/09	angles	0° ±2°	MM	0.XXX ±0.1	RIGHT ANGLE PRESS-FIT HEADER	PwrBlade	code	
				dr	WL ZHANG 11/13/09	scale		product family	size	213	
				engr	JEROME CHEN 11/13/09			dwg no		sheet	
				chr	PW ZHENG 11/13/09			A	51733-009	1 of 4	
				appd	JOSEPH HSIA 11/13/09						
sheet index	revision sheet	A	A	A	A						
		1	2	3	4						

Pro/E

cage code 22526

PDM: Rev:A

STATUS:Released

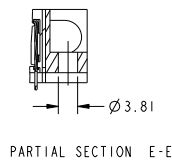
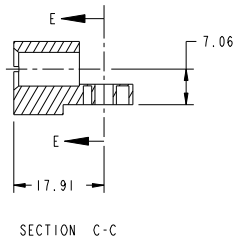
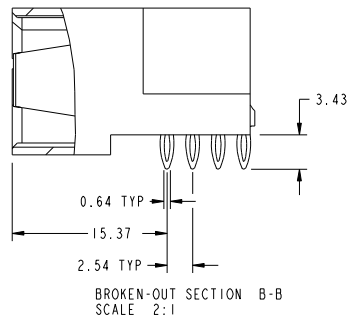
Printed: Dec 20, 2010

Tous droits strictement réservés. Reproduction ou communication à des tiers interdite sous quelque forme que ce soit sans autorisation écrite du propriétaire. Propriété de c FCI. Droits de reproduction FCI.



All rights strictly reserved. Reproduction or issue to third parties in any form whatever is not permitted without written authority from the proprietor. Property of FCI. Copyright FCI.

PRODUCT NUMBER
51733-009...
NOTE: 3



mat'l code				SEE NOTE		tolerances unless otherwise specified		CUSTOMER		FCI	
lfr	ecn no.	dr	date			linear	0.X ±0.5	COPY		www.fciconnect.com	
A						linear	0.XX ±0.25	projection			
						angles	0.XXX ±0.1				
						dr	0° ±2°				
						eng	WL ZHANG 11/13/09				
						chr	JEROME CHEN 11/13/09				
						appd	PM ZHENG 11/13/09				
							JOSEPH HSIA 11/13/09				
sheet index	revision sheet							scale	1:1		

title 5P
RIGHT ANGLE PRESS-FIT HEADER
product family PwrBlade code 213
size dwg no 51733-009 sheet 2 of 4

cage code 22526

PDM: Rev:A

STATUS:Released

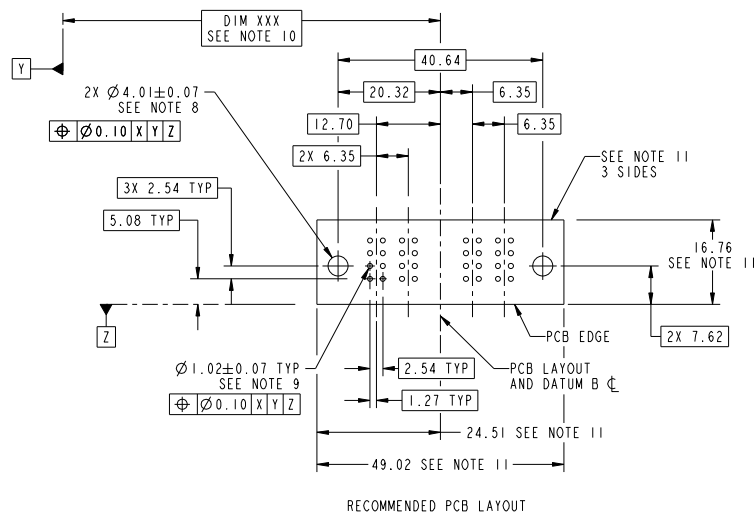
Printed: Dec 20, 2010

Tous droits strictement réservés. Reproduction ou communication à des tiers interdite sous quelque forme que ce soit sans autorisation écrite du propriétaire. Propriété de c FCI. Droits de reproduction FCI.



All rights strictly reserved. Reproduction or issue to third parties in any form whatever is not permitted without written authority from the proprietor. Property of FCI. Copyright FCI.

PRODUCT NUMBER
51733-009...
NOTE: 3



mat'l code				SEE NOTE		tolerances unless otherwise specified		CUSTOMER		FCI	
litr	ecn no.	dr	date	linear		0.X ±0.5		COPY		www.fciconnect.com	
A				angles		0.XX ±0.25		projection		title	
						0.XXX ±0.1				5P	
						0° ±2°				RIGHT ANGLE PRESS-FIT HEADER	
										product family	
										PwrBlade	
										code	
										213	
										sheet	
										3 of 4	
sheet index	revision sheet										

Pro/E

cage code 22526

PDM: Rev:A

STATUS:Released

Printed: Dec 20, 2010

Tous droits strictement réservés. Reproduction ou communication à des tiers interdite sous quelque forme que ce soit sans autorisation écrite du propriétaire. Propriété de FCI. Droits de reproduction FCI.



All rights strictly reserved. Reproduction or issue to third parties in any form without prior written authority from the proprietor. Property of FCI. Copyright FCI.

PRODUCT NUMBER

51733-009..
NOTE: 3

NOTES:

1. DIMENSIONS AND TOLERANCES ARE IN ACCORDANCE WITH
ASME Y14.5M, 1994 UNLESS OTHERWISE SPECIFIED.

CONNECTOR NOTES:

2. HOUSING MATERIAL: UL 94 V-0 GLASS FILLED
HIGH-TEMP THERMOPLASTIC
POWER CONTACT MATERIAL: COPPER ALLOY
SIGNAL PIN MATERIAL: COPPER ALLOY
 3. PLATING SPEC:
SEE ITEM 3 & 4 IN PRINT 10064183 FOR PLATING SPEC OF 51733-009; 51733-009LF PRESPECTIVELY
 4. MANUFACTURER'S NAME, DATE CODE AND OPTIONAL P/N TO APPEAR ON THIS SURFACE.
THE P/N CAN BE OMITTED IF THERE IS NOT ENOUGH SPACE ON THIS SURFACE.
 5. PRODUCT SPECIFICATION GS-12-149.
APPLICATION SPECIFICATION BUS-20-067.
 6. PACKAGED IN TRAYS.
- PCB NOTES:
7. ALL HOLE DIAMETERS ARE FINISHED HOLE SIZE.
 8. MOUNTING HOLES, WHERE APPLICABLE, ARE UNPLATED.
 9. $\varnothing 1.151 \pm 0.025$ DRILLED HOLES PLATED WITH
0.008 MIN SnPb OR Sn OVER 0.03
TO 0.08 Cu PLATING TO ACHIEVE
 $\varnothing 1.02 \pm 0.07$ HOLE.
 10. "DIM XXX" TO BE DETERMINED BY THE CUSTOMER.
 11. CONNECTOR KEEP-OUT ZONE.

mat'l code				SEE NOTE		tolerances unless otherwise specified		CUSTOMER		FCI	
lfr	ecn no.	dr	date					COPY		www.fciconnect.com	
A				linear		$0.X \pm 0.5$		projection		title	5P RIGHT ANGLE PRESS-FIT HEADER
						$0.XX \pm 0.25$					
						$0.XXX \pm 0.1$					
				angles		$0^\circ \pm 2^\circ$			MM	product family	PwrBlade
				dr		WL ZHANG 11/13/09					
				eng		JEROME CHEN 11/13/09					
				chr		PW ZHENG 11/13/09		scale	1:1	size	dwg no
				appd		JOSEPH HSIA 11/13/09					
sheet index	revision sheet										

Pro/E

cage code 22526

PDM: Rev:A

STATUS:Released

Printed: Dec 20, 2010