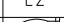
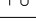
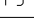
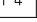
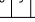
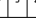
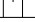
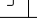
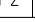
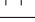
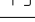
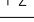
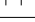
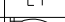
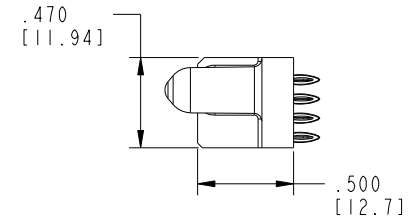
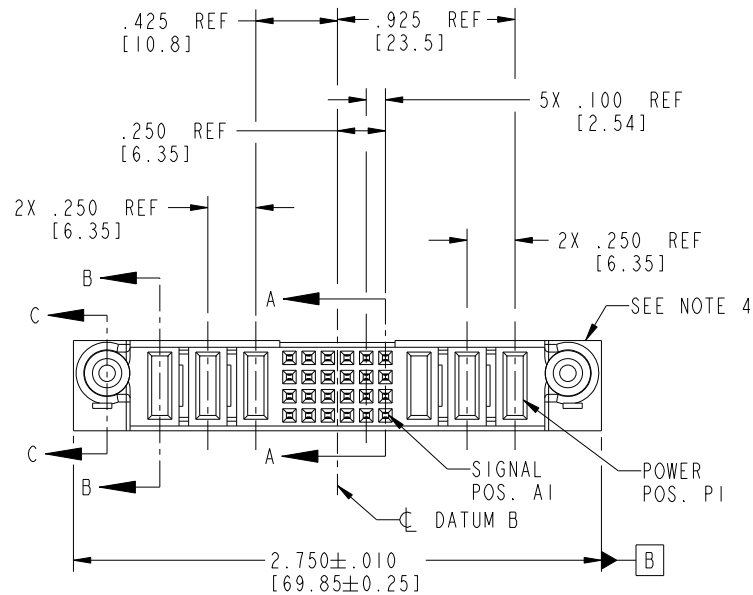


Tous droits strictement reserves. Reproduction ou communication a des tiers interdite sous quelque forme que ce soit sans autorisation écrite du propriétaire.
Propriete de c FCI. Droits de reproduction FCI.



All rights strictly reserved. Reproduction or issue to third parties in any form whatever is not permitted without written authority from the proprietor.
Property of FCI. Copyright FCI.

1															2															3															4														
PRODUCT NO.	ROWS	POWER				SIGNAL							POWER			E1																																											
		E2	P6	P5	P4	6	5	4	3	2	1	P3	P2	P1																																													
51750-008-- NOTE: ③	D C B A																																																										



CODE	DIM "M" MATING LENGTH	CONTACT TYPE
F	N/A [N/A]	SIGNAL
PC	.042 [1.07]	POWER
PF	.092 [2.34]	POWER

mat'l code				SEE NOTE 2		tolerances unless otherwise specified		CUSTOMER		FCI	
ltr	ecn no.	dr	date					COPY		www.fciconnect.com	
A	V02923	EKK	01/03/01	linear		.XX±.01/0.X±0.3		projection		title	
B	V03-1275	TAB	12/01/03			.XXX±.005/0.XX±0.13				3P + 24S + 3P	
C	DG05-0232	SJ	07/21/05	angles		.XXX±.0020/0.XXX±0.051				VERTICAL PRESSFIT RECEPT	
D	DG05-0138	GJM	06/01/05	dr	E. KORFF	01/03/01				product family PwrBlade	
E	DG08-0251	W D	09/13/08	enrg	J. DODDS	01/03/01				size dwg no	
				chr	J. DODDS	01/03/01				A 51750-008	
				appd	J. DODDS	01/03/01				code 213	
sheet index		revision sheet		E	E	E	E			sheet 1 of 4	
		1	2		3	4					

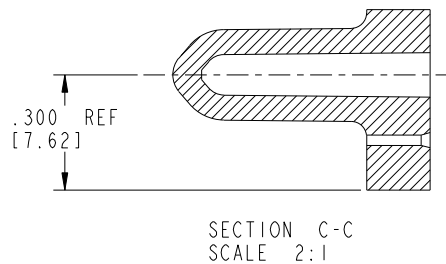
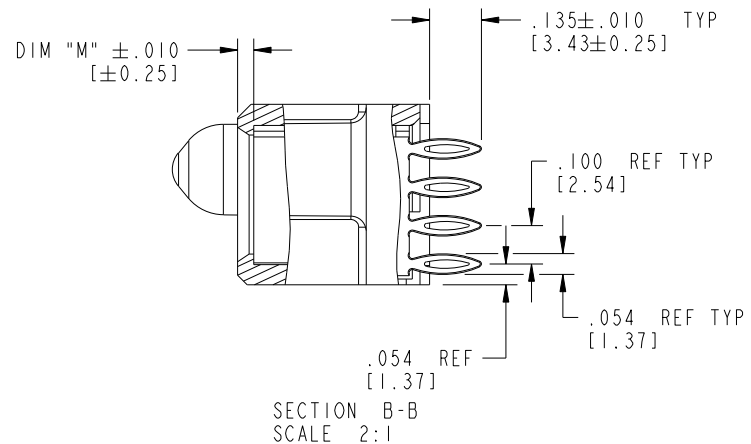
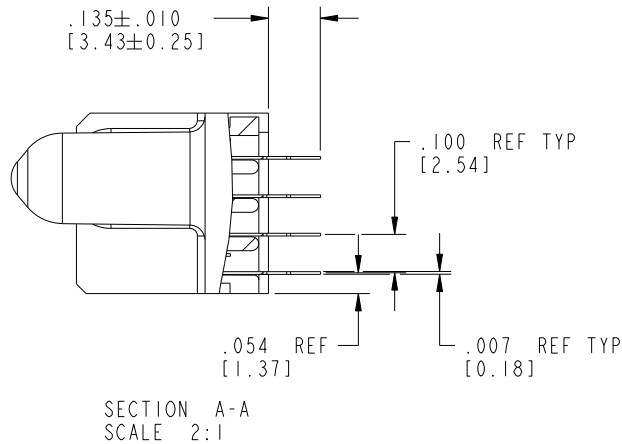
Pro/E

PDM: Rev: E

STATUS: Released

Printed: Dec 20, 2010

PRODUCT NUMBER
51750-008--
NOTE: ③



mat'l code				SEE NOTE 2		tolerances unless otherwise specified		CUSTOMER		FCI	
litr	ecr no.	dr	date	linear	angles	linear	angles	COPY	projection	title	www.fciconnect.com
E				.XX±.01/0.X±0.3		.XX±.005/0.XX±0.13				3P + 24S + 3P	
				.XXXX±.0020/0.XXX±0.051						VERTICAL PRESSFIT RECEPT	
					0°±2°					product family	PwrBlade
				dr	E. KORFF	01/03/01				size	213
				enr	J. DODDS	01/03/01				dwg no	sheet
				chr	J. DODDS	01/03/01				51750-008	2 of 4
				appd	J. DODDS	01/03/01					
sheet index	revision sheet										

PRODUCT NUMBER
51750-008--
NOTE: ③

NOTES:

1. DIMENSIONS AND TOLERANCES ARE IN ACCORDANCE WITH
ASME Y14.5M, 1994 UNLESS OTHERWISE SPECIFIED.

CONNECTOR NOTES:

② HOUSING MATERIAL: UL 94 V-0 GLASS FILLED HIGH-TEMP THERMOPLASTIC
POWER CONTACT MATERIAL: COPPER ALLOY
SIGNAL PIN MATERIAL: COPPER ALLOY

⚠ ③. SEE ITEM 7 & 8 IN PRINT 10064183 FOR PLATING SPEC OF 51750-008 AND 51750-008LF RESPECTIVELY.

④ MANUFACTURER'S NAME, P/N, AND DATE CODE TO APPEAR ON THIS SURFACE.

5. PRODUCT SPECIFICATION GS-12-149.
APPLICATION SPECIFICATION BUS-20-067.

6. PACKAGED IN TRAYS.

PCB NOTES:

7. ALL HOLE DIAMETERS ARE FINISHED HOLE SIZE.

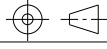
⑧ MOUNTING HOLES, WHERE APPLICABLE, ARE UNPLATED.

⑨ $\varnothing .0453 \pm .0010$ [1.151 \pm 0.025] DRILLED HOLES PLATED WITH
.0003 [0.008] MIN SnPb OVER .001 [0.03]
TO .003 [0.08] Cu PLATING TO ACHIEVE
 $\varnothing .040 \pm .003$ [1.02 \pm .07] HOLE.

⑩ "DIM XXX" TO BE DETERMINED BY THE CUSTOMER.

⑪ CONNECTOR KEEP-OUT ZONE.

12. ⚠ SYMBOL WILL BE NEXT TO ANY DIMENSION, VIEW, OR NOTE WHICH HAS BEEN MODIFIED
WITH THE CURRENT DRAWING REVISION.

mat'l code				SEE NOTE 2				tolerances unless otherwise specified				CUSTOMER			
ltr	ecn no.	dr	date												
E				linear				.XX \pm .01/0.X \pm 0.3				COPY			
								.XXX \pm .005/0.XX \pm 0.13				projection			
				angles				.XXXX \pm .0020/0.XXX \pm 0.051							
								0° \pm 2°				INCH/MM			
				dr				E. KORFF 01/03/01				scale			
				enrg				J. DODDS 01/03/01				1:1			
				chr				J. DODDS 01/03/01							
				appd				J. DODDS 01/03/01							
sheet index		revision sheet													

FCI		www.fciconnect.com	
title		3P + 24S + 3P	
product family		PwrBlade	
size	dwg no	code	
A	51750-008	213	
		sheet	
		4 of 4	

Mouser Electronics

Authorized Distributor

Click to View Pricing, Inventory, Delivery & Lifecycle Information:

FCI:

[51750-008](#)