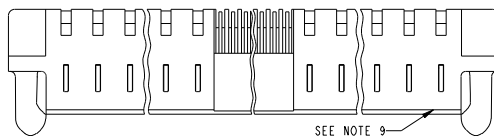


Tous droits strictement réservés. Reproduction ou communication à des tiers sans autorisation écrite du propriétaire. Property of FCI. Droits de reproduction FCI.

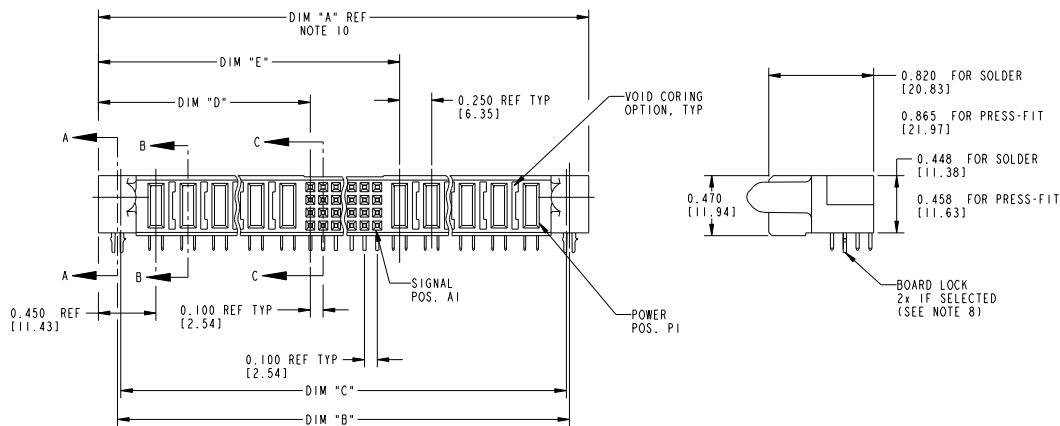


All rights strictly reserved. Reproduction or issue to third parties in any form without written authority from the proprietor. Property of FCI. Copyright FCI.

PRODUCT NUMBER
51760- ABBCCDDEF--
Note: ③
SEE NOTE 1



SEE NOTE 9



THIS FILE WAS ORIGINALLY CREATED IN THE PRO ENGINEER ENVIRONMENT AND ANY FUTURE REVISIONS TO THIS FILE MUST BE MADE IN THE PRO ENGINEER ENVIRONMENT

mat'l code SEE NOTE 2				tolerances unless otherwise specified		CUSTOMER COPY		FCI www.fciconnect.com	
itr	con no.	dr	date	linear	.XX±.01/.XX±.3	projection 	INCH / MM scale 1:1	title RIGHT ANGLE RECEPTACLE w/GUIDE PIN POWER / SIGNAL / POWER	product family size A
K	D605-0124	SJ	06/03/05		.XXX±.005/.XXX±.13				
L	D605-0485	GeoJM	11/21/05		.XXX±.0020/.XXX±.051				
M	D607-0498	JW	05/23/08	angles	0°±.2°	scale 1:1	A	51760	SHEET 1 OF 3
				D. BOGLE	05-18-99				
				engr	J. BROWN				
				chr	J. BROWN				
				appd	J. BROWN	scale 1:1	A	51760	SHEET 1 OF 3
sheet index	revision sheet	M	M	M					
		1	2	3					

form no. 7530-001-103

cage code 22526

PDM: Rev:M

STATUS:Released

Printed: Dec 20, 2010

Tous droits strictement réservés. Reproduction ou communication à des tiers sans autorisation écrite du propriétaire. Property of FCJ. Droit de reproduction FCJ.



All rights strictly reserved. Reproduction or issue to third parties in any form without written authority from the proprietor. Property of FCJ. Copyright FCJ.

PRODUCT NUMBER
51760-ABBCCDDEF-- Note: ③
SEE NOTE 1

DIM	LENGTH FORMULAS (SEE NOTE 10)
DIM "A"	.250 [6.35] x DD + .100 [2.54] x (CCC/4) + .250 [6.35] x BB + .650 [16.51] (NOTE 10)
DIM "B"	.250 [6.35] x DD + .100 [2.54] x (CCC/4) + .250 [6.35] x BB + .350 [8.89]
DIM "C"	.250 [6.35] x DD + .100 [2.54] x (CCC/4) + .250 [6.35] x BB + .300 [7.62]
DIM "D"	.250 [6.35] x DD + .375 [9.35]
DIM "E"	.250 [6.35] x DD + .100 [2.54] x (CCC/4) + .450 [11.43]
DIM "F"	.250 [6.35] x DD + .100 [2.54] x (CCC/4) + .250 [6.35] x BB + .680 [17.27]
DIM "G"	.250 [6.35] x DD + .225 [5.72]
DIM "H"	.250 [6.35] x DD + .100 [2.54] x (CCC/4) + .250 [6.35]

CONNECTOR NOTES

① PRODUCT NUMBER CODE:
51760 - A BB CCC DD E F LE

NO THIS SUFFIX: 100u"/2.54um SnPb ON PCB INTERFACE
ADD THIS SUFFIX: 78u"/2.00um Sn OR 5u" Au ON PCB INTERFACE
RETENTION TO PCB (NOTE 8)
TAIL OPTIONS (NOTE 7)
NUMBER OF LEFT END POWER CONTACTS (NOTE 6)
NUMBER OF SIGNAL CONTACTS (NOTE 5)
NUMBER OF RIGHT POWER CONTACTS (NOTE 4)
PLATING (NOTE 3)
BASE NUMBER

B = .150 [3.81] THRU HOLE (REQUIRES .158 ±0.003
[4.01 ±0.08] THRU HOLE IN PCB).
MOUNTING FOOT HEIGHT
[6014.06]

⑨. MANUFACTURE'S NAME, P/N, AND DATE CODE
TO APPEAR ON THIS SURFACE.

⑩. THE MAXIMUM OVERALL LENGTH (DIM A) OF A PART
IS 8.00 [203.2]

11. PRODUCT SPECIFICATION GS-12-149

12. APPLICATION SPECIFICATION BUS-20-067.

13. FOR PRESS-FIT CONNECTORS USE FCJ CAM TOOL 430140-XXX
TO APPLY CONNECTOR TO PCB.

PCB NOTES:

14. ALL DIMENSIONS ARE BASIC UNLESS OTHERWISE SPECIFIED.

15. ALL THROUGH HOLES ARE LOCATED WITH A
TRUE POSITION OF .004(0.10)

16. ALL HOLE DIAMETERS ARE FINISHED HOLE SIZE.

⑪. Ø 0.0453 ±.001 [1.151 ±0.02] DRILLED HOLES PLATED WITH
0.0003 [0.007] MIN SnPb OVER 0.001 [1.03] TO .003 [0.08]
PLATING TO ACHIEVE A .040±.003 [1.02±0.08] HOLE.

18. THE VOID CORING IN BETWEEN POWER MODULES, SIGNAL MODULES
AND END MODULES ARE OPTIONAL AND THE SHAPE MAY BE DIFFERENT
FOR OPTIMIZING THE MOLDING PROCESS. THE VOID CORING WILL NOT
EFFECT TO PRODUCT FUNCTION.

19. A Δ SYMBOL WILL BE NEXT TO ANY DIMENSION, VIEW, OR NOTE
WHICH HAS BEEN MODIFIED WITH THE CURRENT DRAWING REVISION.

②. HOUSING MATERIAL: GLASS FILLED V-O HIGH TEMP THERMO PLASTIC.
SIGNAL CONTACT MATERIAL: COPPER ALLOY
POWER CONTACT MATERIAL: COPPER ALLOY

③. PLATING OPTION:

Δ 1: SEE IN PRINT 10064183 FOR PLATING SPEC OF 51760-ABBCCDDEF; 51760-ABBCCDDEFLF

④. RIGHT END POWER CONTACTS, 01 TO 20 AVAILABLE.
MAXIMUM OF 20 POWER CONTACTS PER CONNECTOR

⑤. SIGNAL CONTACTS, 004 TO 148 AVAILABLE FOR SOLDER TO BOARD.
020 TO 148 AVAILABLE FOR PRESS-FIT TO BOARD.

⑥. LEFT END POWER CONTACTS, 01 TO 20 AVAILABLE.
MAXIMUM OF 20 POWER CONTACTS PER CONNECTOR

⑦. TAIL OPTIONS:

A = .135 ±.010 [3.43 ±.25] SOLDER TO BOARD
B = .090 ±.005 / .010 [2.29 ±0.13 / -0.25]
SOLDER TO BOARD
C = .154 ±.010 [3.91 ±0.25] PRESS-FIT TO BOARD

⑧. RETENTION TO PCB OPTIONS:

A = BOARD LOCK (REQUIRES .098 ±.002/- .001
[2.49 ±0.05/-0.03] THRU HOLE IN PCB
MOUNTING FOOT HEIGHT:
220(5.59)
NOT AVAILABLE FOR PRESS-FIT

THIS FILE WAS ORIGINALLY CREATED IN THE PRO
ENGINEER ENVIRONMENT AND ANY FUTURE REVISIONS TO
THIS FILE MUST BE MADE IN THE PRO ENGINEER
ENVIRONMENT

mat'l code				tolerances unless otherwise specified		CUSTOMER		FCJ	
litr	ecn no.	dr	date	linear	.XX±.01/.X±.3 .XXX±.005/.XX±.13 .XXX±.0020/.XXX±.051	COPY		www.fcjconnect.com	
M				angles	0°±2°	projection			
				dr	D. BOGLE 05-18-99	INCH / MM			
				engr	J. BROWN 05-18-99	scale			
				chr	J. BROWN 05-18-99	1:2			
				appd	J. BROWN 05-18-99				
sheet	revision								
index	sheet								

form no. 7530-001-103

1 2

3

cage code 22526

4

PDM: Rev:M

STATUS:Released

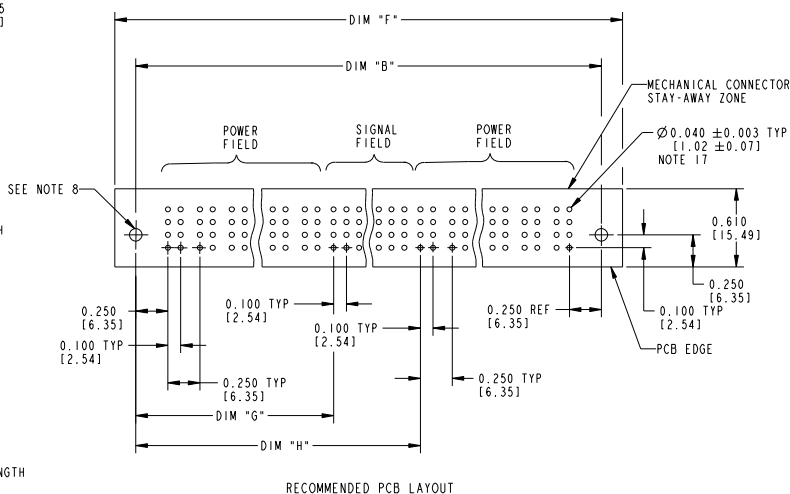
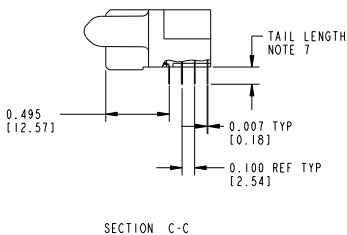
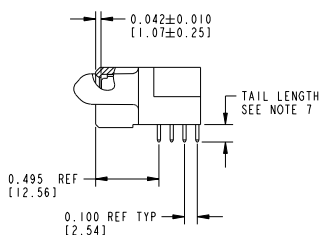
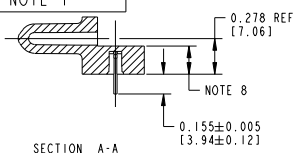
Printed: Dec 20, 2010


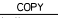
Tous droits strictement réservés. Reproduction ou communication à des tiers sans autorisation écrite du propriétaire. Property of FCJ. Droits de reproduction FCJ.



All rights strictly reserved. Reproduction or issue to third parties in any form without written authority from the proprietor. Property of FCJ. Copyright FCJ.

PRODUCT NUMBER
51760 - ABBCCDDEF--
Note: ③
SEE NOTE 1



mat'l code				tolerances unless otherwise specified		CUSTOMER CSGY		 www.fcjconnect.com	
litr	ecm no.	dr	date	linear	.XX±.01/.X±.3	projection 	INCH / MM	title RIGHT ANGLE RECEPTACLE w/GUIDE PIN POWER / SIGNAL / POWER	
M					.XXX±.005/.XX±.13 .XXX±.0020/.XX±.051 0°±2°				
				angles					
				dr	D. BOGLE 05-18-99	product family size		PwrBlode	code 213
				engr	J. BROWN 05-18-99				
				chr	J. BROWN 05-18-99	scale 1:1		dwg no 51760	SHEET 3 OF 3
				appd	J. BROWN 05-18-99				
sheet index	revision sheet								

form no. 7530-001-103

cage code 22526

PDM: Rev:M

STATUS:Released

Printed: Dec 20, 2010