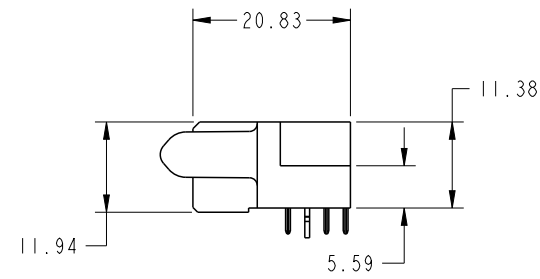
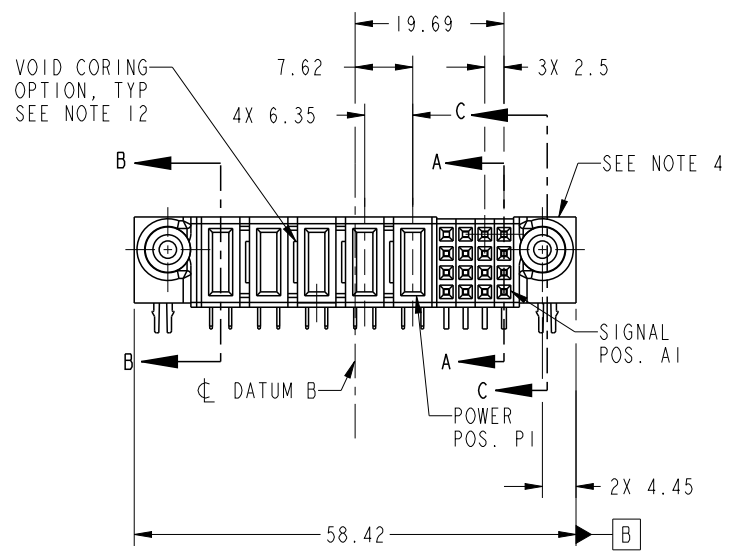




Copyright FCI.

PRODUCT NO.	ROWS	POWER						SIGNAL				
		E2	P5	P4	P3	P2	P1	4	3	2	1	E1
51771-026-- NOTE 3	D C B A		PA	PA	PA	PA	PA	H	H	H	H	
								G	G	G	G	
								F	F	F	F	
								E	E	E	E	



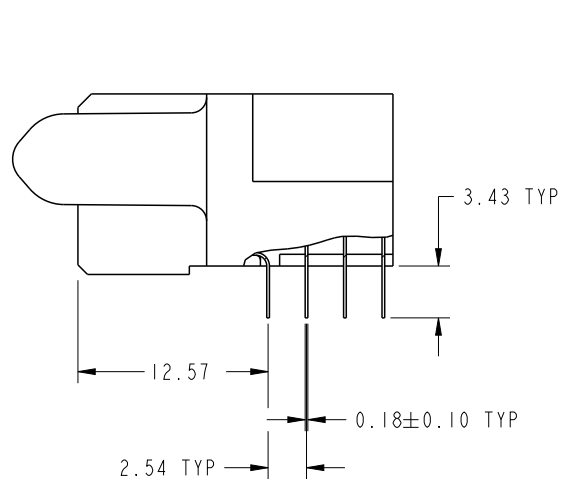
CODE	DIM "M" MATING LENGTH	CONTACT TYPE
PA	[1.07]	POWER
H	[N/A]	SIGNAL
G	[N/A]	SIGNAL
F	[N/A]	SIGNAL
E	[N/A]	SIGNAL
HA	[N/A]	HOLD-DOWN

spec ref		SEE NOTES		dr	X Q Wang	2012/08/10	<div>projection</div> <div></div>	<div>MM</div> <div></div>	size	A4	scale	1:1	
tolerance std SEE NOTES	TOLERANCES UNLESS OTHERWISE SPECIFIED			eng	Jackie Huang	2013/06/21			ecn no	-			
				chr	-	-			rel level				
				appr	Pei-Ming Zheng	2013/06/21						product family	
surface	linear	0.X	±0.50		title	I 6S+5P R/A SOLDER RECEPTACLE			dwg no	51771-026		rev	A
		0.XX	±0.25										
		0.XXX	±0.10										
	angular	0°	±2°										

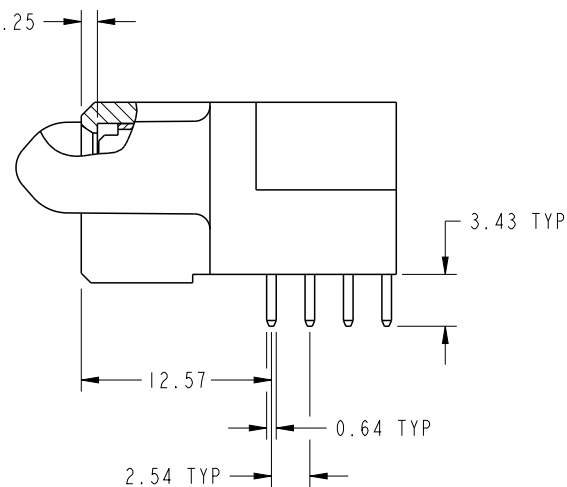
PrintE File - REV C - 2009-06-09

PRODUCT NUMBER

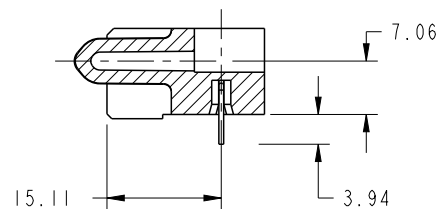
51771-026__
NOTE 3



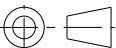


BROKEN-OUT SECTION A-A
SCALE 2:1



BROKEN-OUT SECTION B-B
SCALE 2:1

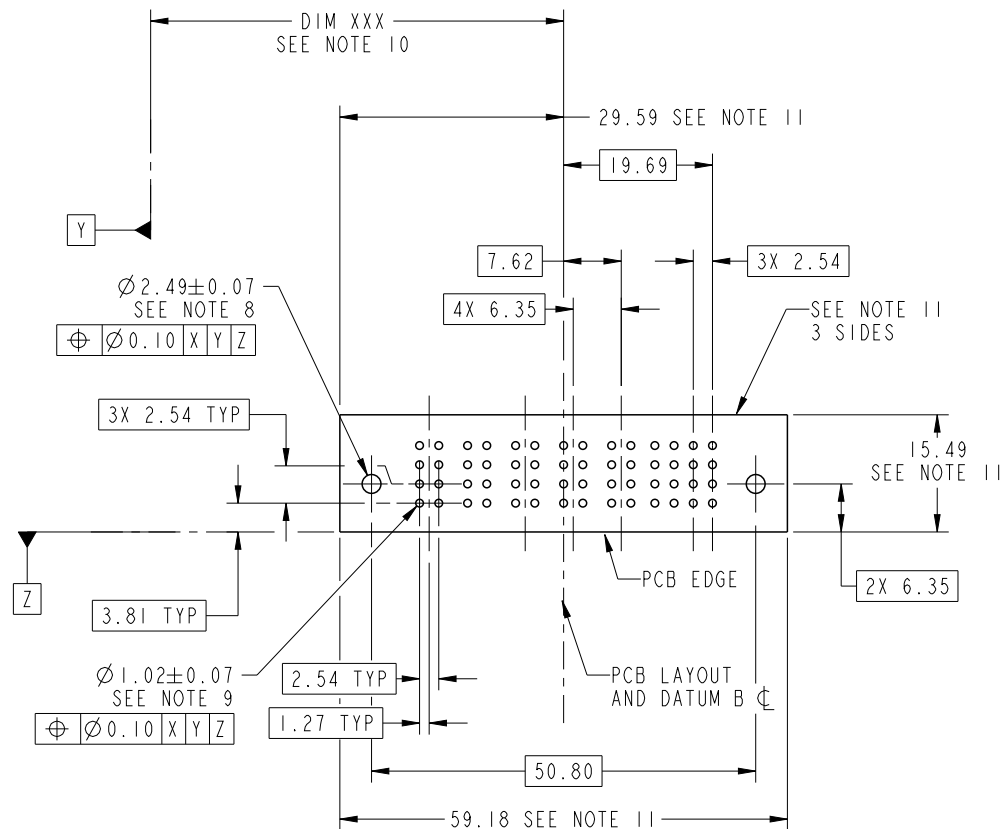


SECTION C-C

dr	X Q Wang	2012/08/10	<div>projection</div> <div></div>	<div>MM</div> <div></div>	size	A4	scale	1:1
eng	Jackie Huang	2013/06/21			ecn no -			
chr	-	-						
appr	Pei-Ming Zheng	2013/06/21	product family		PwrBlade	rel level	Released	
	title 16S+5P R/A SOLDER RECEPTACLE				dwg no 51771-026			rev A
www.fci.com	cat. no.		Product - Customer Drw			sheet 2 of 4		

PRODUCT NUMBER

51771-026--
NOTE 3



RECOMMENDED PCB LAYOUT

dr	X Q Wang	2012/08/10	projection	MM	size	A4	scale	1:1
eng	Jackie Huang	2013/06/21			ecn no	-		
chr	-	-			rel level	Released		
appr	Pei-Ming Zheng	2013/06/21	product family	PwrBlade				
FCI		title	I6S+5P R/A SOLDER RECEPTACLE		dwg no	51771-026		rev
www.fci.com		cat. no.	Product - Customer Drw				sheet 3 of 4	



Copyright FCI.

PRODUCT NUMBER
51771-026--
NOTE 3

NOTES:

1. DIMENSIONS AND TOLERANCES ARE IN ACCORDANCE WITH
ASME Y14.5M, 1994 UNLESS OTHERWISE SPECIFIED.

CONNECTOR NOTES:

- 2. HOUSING MATERIAL: UL 94 V-0 GLASS FILLED HIGH-TEMP THERMOPLASTIC
POWER CONTACT MATERIAL: COPPER ALLOY
SIGNAL PIN MATERIAL: COPPER ALLOY
- 3. SEE ITEM 5 & 6 IN PRINT 10064183 FOR PLATING SPEC OF 51771-026 AND 51771-026LF RESPECTIVELY.
- 4. MANUFACTURER'S NAME, DATE CODE AND OPTIONAL P/N TO APPEAR ON
THIS SURFACE. THE MARK CAN BE OMITTED IF THERE IS NOT ENOUGH SPACE
ON THIS SURFACE.
- 5. PRODUCT SPECIFICATION GS-12-149.
APPLICATION SPECIFICATION BUS-20-067.
- 6. PACKAGED IN TRAYS.
- PCB NOTES:
- 7. ALL HOLE DIAMETERS ARE FINISHED HOLE SIZE.
- 8. MOUNTING HOLES, WHERE APPLICABLE, ARE UNPLATED.
- 9. $\varnothing 1.151 \pm 0.025$ DRILLED HOLES PLATED WITH
0.008 MIN SnPb OR Sn OVER 0.03
TO 0.08 Cu PLATING TO ACHIEVE
 $\varnothing 1.02 \pm .07$ HOLE.
- 10. "DIM XXX" TO BE DETERMINED BY THE CUSTOMER.
- 11. CONNECTOR KEEP-OUT ZONE.
- 12. THE VOID CORING IN BETWEEN POWER MODULES, SIGNAL
MODULES AND END MODULES ARE OPTIONAL AND THE SHAPE
MAY BE DIFFERENT FOR OPTIMIZE THE MOLDING PROCESS. THE
VOID CORING WILL NOT EFFECT TO PRODUCT FUNCTION.

dr	X Q Wang	2012/08/10	<div>projection</div> <div></div>	<div>MM</div> <div></div>	size	A4	scale	1:1
eng	Jackie Huang	2013/06/21			ecn no	-		
chr	-	-						
appr	Pei-Ming Zheng	2013/06/21	product family		PwrBlade	rel level		Released
<div></div>	title				dwg no		rev	
	I6S+5P				51771-026		A	
	R/A SOLDER RECEPTACLE							
www.fci.com	cat. no.		Product - Customer Drw				sheet 4 of 4	

Mouser Electronics

Authorized Distributor

Click to View Pricing, Inventory, Delivery & Lifecycle Information:

[FCI / Amphenol:](#)

[51771-026LF](#)