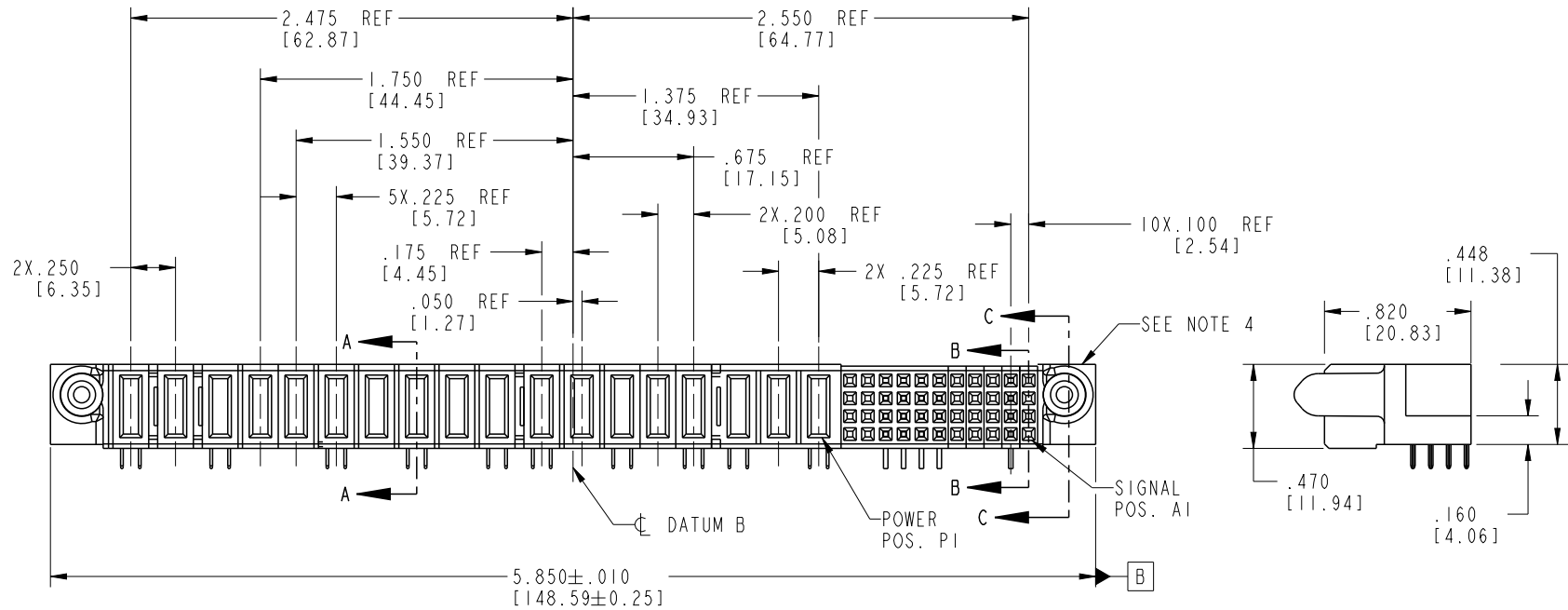



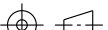
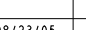


Tous droits strictement reserves. Reproduction ou communication a des tiers sous quelque forme que ce soit sans autorisation ecrite du proprietaire.



CODE	DIM "M" MATING LENGTH	CONTACT TYPE
PA	.042 [1.07]	POWER
H	N/A [N/A]	SIGNAL
G	N/A [N/A]	SIGNAL
F	N/A [N/A]	SIGNAL
E	N/A [N/A]	SIGNAL
X	OMITTED	OMITTED

Helen Zhang  
w wcadmin

mat'l code				tolerances unless otherwise specified				CUSTOMER		 www.fciconnect.com			
2010/11/19				.XX±.01/0.XX±0.3 .XXX±.005/0.XX±0.13 .XXX±.0020/0.XXX±0.051				COPY		title 44S + 18P R/A STB REC			
2011/04/17								projection					
15 linear								angles					
				dr JM Guo 08/23/05				INCH/MM		product family PwrB			
				enrg SLUO 08/23/05				scale 1:1		size dwg no		213 sheet 1 of 4	
				chr VICTOR LIN 08/23/05						A 51915-082			
				appd JOSEPH HSIA 08/23/05									
sheet index		revision sheet		A 1		A 2							
				A 3		A 4							

**Released**

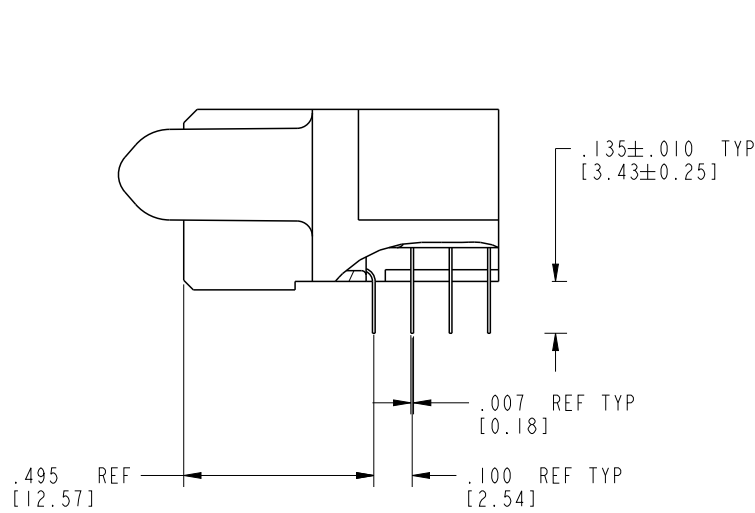
**B A**

Tous droits strictement reserves. Reproduction ou communication a des tiers interdite  
sous quelque forme que ce soit sans autorisation écrite du propriétaire.  
Propriété de c FCI. Droits de reproduction FCI.

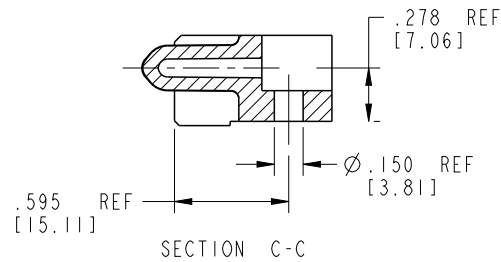


All rights strictly reserved. Reproduction or issue to third parties in any  
form whatever is not permitted without written authority from the proprietor.  
Property of FCI. Copyright FCI.

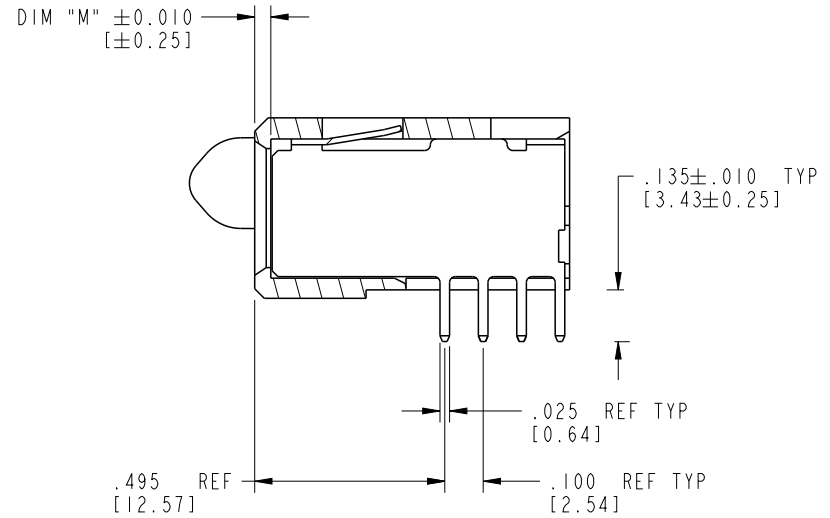
PRODUCT NUMBER  
51915-082--  
NOTE:③



SECTION B-B  
SCALE 2:1



SECTION C-C



SECTION A-A  
SCALE 2:1

Helen Zhang  
w wadmin

material code		tolerances unless otherwise specified		CUSTOMER		FCI	
2010/11/19		.XX±.01/0.X±0.3		COPY		www.fciconnect.com	
2011/04/17		linear .XXX±.005/0.XX±0.13		projection		title 44S + 18P	
		angles .XXX±.0020/0.XXX±0.051		INCH/MM		R/A STB REC. MODEL	
		dr JM Guo 08/23/05		scale 1:1		product family PwrB	
		enr SLUO 08/23/05				size dwg no 213	
		chr VICTOR LIN 08/23/05				A 51915-082	
		appd JOSEPH HSIA 08/23/05				sheet 2 of 4	
sheet index		revision sheet					

Pro/E

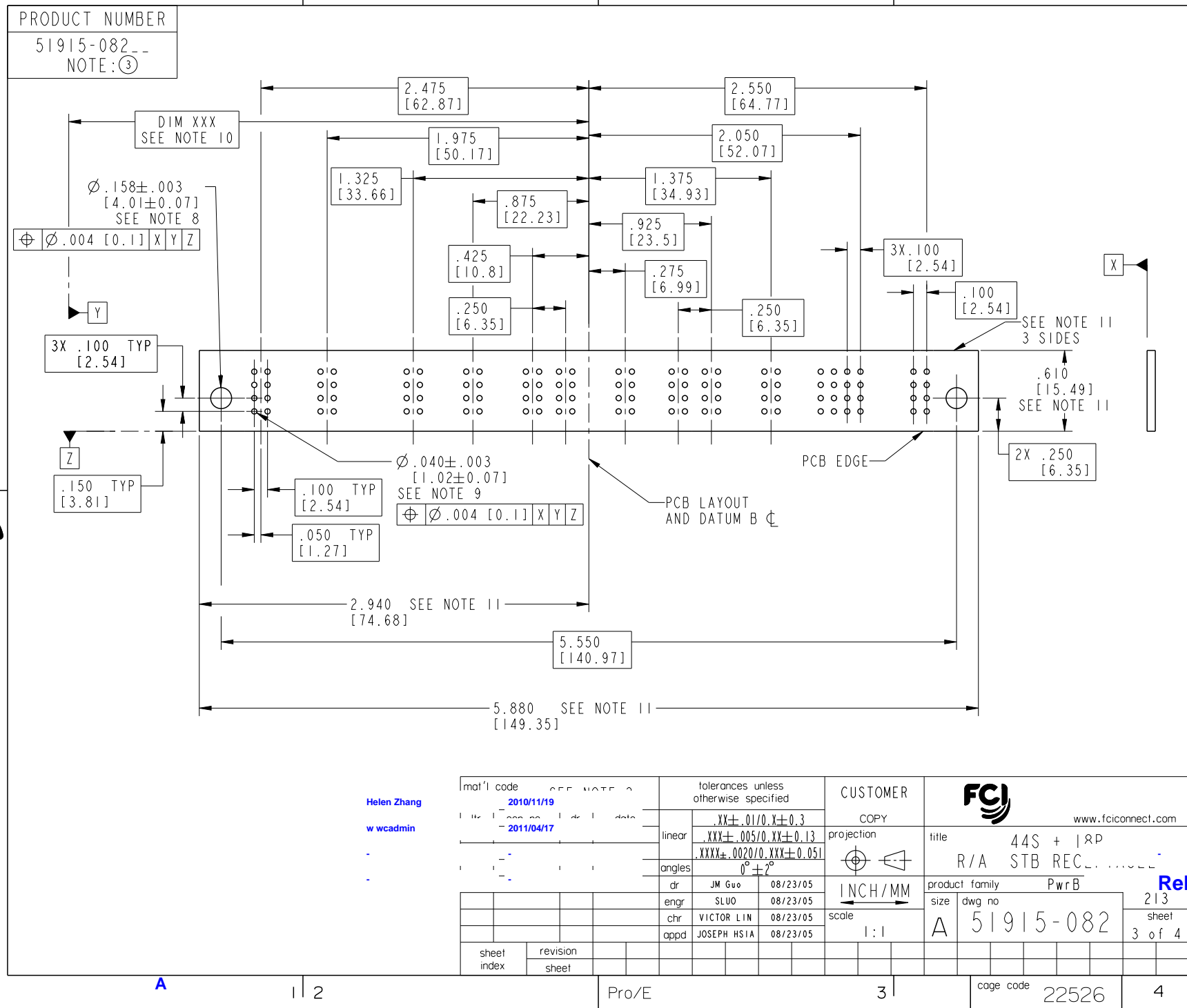
3

cage code 22526

4



All rights strictly reserved. Reproduction or issue to third parties in any form whatever is not permitted without written authority from the proprietor. Property of FCI. Copyright FCI.



**Released**

**B A**



PRODUCT NUMBER  
51915-082--  
NOTE:③

NOTES:

1. DIMENSIONS AND TOLERANCES ARE IN ACCORDANCE WITH  
ASME Y14.5M, 1994 UNLESS OTHERWISE SPECIFIED.

CONNECTOR NOTES:

- ②. HOUSING MATERIAL: UL 94 V-0 GLASS FILLED

HIGH-TEMP THERMOPLASTIC  
POWER CONTACT MATERIAL: COPPER ALLOY  
SIGNAL PIN MATERIAL: COPPER ALLOY

3. PLATING:

51915-082 Singal Pin:30u"/0.76um Au OVER 50u"/1.27um Ni ON THE CONTACT AREA,  
AND 100u"/2.54um SnPb PLATING OVER 50u"/1.27um Ni ON THE TERMINATION SECTION.  
Power Pin:30u"/0.76um Au OVER 50u"/1.27um Ni ON THE CONTACT AREA,  
AND 100u"/2.54um SnPb PLATING OVER 50u"/1.27um Ni ON THE TERMINATION SECTION.

51915-082LF Singal Pin:30u"/0.76um Au OVER 50u"/1.27um Ni ON THE CONTACT AREA,  
AND 78u"/2.00um Sn PLATING OVER 50u"/1.27um Ni ON THE TERMINATION SECTION.  
Power Pin:30u"/0.76um Au OVER 50u"/1.27um Ni ON THE CONTACT AREA,  
AND 78u"/2.00um Sn PLATING OVER 50u"/1.27um Ni ON THE TERMINATION SECTION.

PART NUMBER 51915-082LF MEETS EUROPEAN UNION DIRECTIVE AND IOTHER COUNTRY REGULATIONS AS DESCRIBED IN GS-22-008.

THE HOUSING WILL WITHSTAND EXPOSURE TO 260° PEAK TEMPERATURE FOR 10 SECONDS IN A WAVE SOLDER APPLICATION WITH A CIRCUIT BOARD.

- ④. MANUFACTURER'S NAME, P/N, AND DATE CODE TO APPEAR ON  
THIS SURFACE.

5. PRODUCT SPECIFICATION GS-12-149.  
APPLICATION SPECIFICATION BUS-20-067.

6. PACKAGED IN TRAYS.

PCB NOTES:

7. ALL HOLE DIAMETERS ARE FINISHED HOLE SIZE.

- ⑧. MOUNTING HOLES, WHERE APPLICABLE, ARE UNPLATED.

- ⑨.  $\varnothing .0453 \pm .0010$  [1.151 $\pm$ 0.025] DRILLED HOLES PLATED WITH  
.0003 [0.008] MIN SnPb OVER .001 [0.03]  
TO .003 [0.08] Cu PLATING TO ACHIEVE  
 $\varnothing .040 \pm .003$  [1.02 $\pm$ .07] HOLE.

- ⑩. "DIM XXX" TO BE DETERMINED BY THE CUSTOMER.

- ⑪. CONNECTOR KEEP-OUT ZONE.

mat'l code		tolerances unless otherwise specified		CUSTOMER		FCI	
2010/11/19		.XX $\pm$ .01/0.X $\pm$ 0.3		COPY		www.fciconnect.com	
2011/04/17		linear .XXX $\pm$ .005/0.XX $\pm$ 0.13		projection		title 44S + 18P	
		angles .XXX $\pm$ .0020/0.XXX $\pm$ 0.051				R/A STB RECEPTOR	
		dr JM Guo 08/23/05		INCH/MM		product family PwrB	
		enr SLUO 08/23/05		scale 1:1		size dwg no 213	
		chr VICTOR LIN 08/23/05				A 51915-082	
		appd JOSEPH HSIA 08/23/05				sheet 4 of 4	
sheet index		revision sheet					

Pro/E

cage code 22526

# Mouser Electronics

Authorized Distributor

Click to View Pricing, Inventory, Delivery & Lifecycle Information:

[FCI / Amphenol:](#)

[51915-082LF](#)