



FCIconnect.com

Copyright FCI

form: A3

PRODUCT NUMBER BPS8B96FLD-00-----

|                  |                                      |
|------------------|--------------------------------------|
| WITH "LF" SUFFIX | LEAD FREE OR RoHS COMPATIBLE PRODUCT |
| WITHOUT SUFFIX   | LEADED PRODUCT                       |

| WIRE ACCOMODATION |           |                        |
|-------------------|-----------|------------------------|
| PRODUCT NUMBER    | WIRE SIZE | CONTACT IDENTIFICATION |
| BPS8B96FLD000--   | AWG28/30  | 0                      |
| BPS8B96FLD200--   | AWG24/26  | 2                      |

| CONTACT PLATING |                                |
|-----------------|--------------------------------|
| PLATING CODE    | PERFORMANCE LEVEL PER DIN41612 |
| Z0              | CLASS 3                        |
| Z1              | CLASS 2                        |
| E9              | CLASS 1                        |
| L9              | -                              |

NOTES:-  
1. THE "LF" PRODUCTS MEET EUROPEAN UNION DIRECTIVES AND OTHER COUNTRY REGULATIONS AS DESCRIBED IN GS-22-008  
2. LEAD FREE OR RoHS DIRECTIVE LABELING TO BE PROVIDED AS PER GS-14-920 FOR RoHS COMPATIBLE VERSION.

#### PERFORMANCES CHARACTERISTICS

VOLTAGE RATING : 250 VAC (rms) OF INITIAL VALUE AFTER TEST.  
CURRENT RATING : 1,5 A AT 25 °C, 1 A AT 70 °C.  
INSULATION RESISTANCE : 1000MΩINITIAL, 100MΩMIN. AFTER TEST  
DIELECTRIC WITH-  
STANDING VOLTAGE : 1000 VAC (rms).  
CONTACT RESISTANCE : 15mΩMAX. INITIAL, 5mΩMAX. RISE  
OPERATING TEMPERATURE\*: -40 °C TO +125 °C.  
INSERTION FORCE : 1 N MAX./CONTACT.  
WITHDRAWAL FORCE : 0,2 N MIN./CONTACT.

\*DEPENDING ON THE CABLE, THE MAX. TEMPERATURE CAN BE LOWER.  
FOR STANDARD PVC INSULATED CABLE : 105 °C MAX.

#### CONSTRUCTION

BODY MATERIAL : GLASS-REINFORCED THERMOPLASTIC (UL94V-0).  
CONTACT MATERIAL : PHOSPHOR BRONZE.  
CONTACT FINISH : Au OVER Ni IN CONTACT AREA  
SnPb ON I.D.C. TERMINAL FOR LEADED PRODUCTS.  
Sn (MATTE TIN) ON I.D.C. TERMINAL FOR LEAD FREE PRODUCTS.

Z0 : PERFORMANCE LEVEL PER DIN41612 CLASS 3  
Z1 : PERFORMANCE LEVEL PER DIN41612 CLASS 2  
E9 : PERFORMANCE LEVEL PER DIN41612 CLASS 1  
L9 : 1.25 μm Au OVER Ni

#### PART NUMBERS

BPS8B96FLD000----- CONNECTOR FOR WIRE SIZE AWG28, AWG30.  
(CONTACT IDENTIFICATION : 0).  
BPS8B96FLD200----- CONNECTOR FOR WIRE SIZE AWG24, AWG26  
(CONTACT IDENTIFICATION : 2).

#### AWG WIRE SIZE MARKING

BPS8B96FLD000-- : 28/30.  
BPS8B96FLD000--LF : 28/30.  
BPS8B96FLD200-- : 24/26.  
BPS8B96FLD200--LF : 24/26.

#### DATECODE MARKING

A + YEAR & WEEKCODE, EXAMPLE : A9950.

|                         |                |      |            |                       |                               |                  |                                            |  |  |  |  |  |  |  |  |  |  |  |
|-------------------------|----------------|------|------------|-----------------------|-------------------------------|------------------|--------------------------------------------|--|--|--|--|--|--|--|--|--|--|--|
| mat'l. code<br>SEE NOTE |                |      |            | surface<br>ISO 1302 ✓ | tolerance<br>ISO 406 ISO 1101 | projection<br>mm | product family<br>BPS8                     |  |  |  |  |  |  |  |  |  |  |  |
| litr                    | ecn no         | dr   | date       | tolerances unless     | otherwise specified           | mm               | title<br>ASSY BPS8<br>96 POS. A,B,C LOADED |  |  |  |  |  |  |  |  |  |  |  |
| A                       | F00819         | DLE  | 2000-10-19 | angles                | 0.1±0.2                       | mm               | dwg no<br>55365                            |  |  |  |  |  |  |  |  |  |  |  |
| B                       | F00835         | GCO  | 2000-11-09 | linear                | 0.01±0.1                      |                  |                                            |  |  |  |  |  |  |  |  |  |  |  |
| C                       | I05-0123       | MINI | 2005-07-27 | ±1°                   |                               | scale -          | sheet 1 of 4 size<br>A3                    |  |  |  |  |  |  |  |  |  |  |  |
| D                       | I06-0067       | MINI | 2006-06-01 | dr                    | D.LEGRAND                     | 2000-10-19       |                                            |  |  |  |  |  |  |  |  |  |  |  |
| E                       | ELX-I-24377    | MJA  | 2016-06-24 | engr                  | J.F.NOTTEAU                   | 2000-10-19       | type Product Customer Drawing              |  |  |  |  |  |  |  |  |  |  |  |
|                         |                |      |            | chr                   | M JACOB                       | 2016-06-24       |                                            |  |  |  |  |  |  |  |  |  |  |  |
|                         |                |      |            | appd                  | BIJU K PAUL                   | 2016-06-24       |                                            |  |  |  |  |  |  |  |  |  |  |  |
| sheet index             | revision sheet | E    | D          | D                     | E                             |                  |                                            |  |  |  |  |  |  |  |  |  |  |  |
|                         |                | 1    | 2          | 3                     | 4                             |                  |                                            |  |  |  |  |  |  |  |  |  |  |  |

PDS: Rev :E

STATUS:Released

Printed: Jun 24, 2016



FCIconnect.com

Copyright FCI

PRODUCT NUMBER BPS8B96FLD100L9

PRODUCT NUMBER BPS8B96FLD100L9LF

LEADED PRODUCT

LEAD FREE OR  
RoHS COMPATIBLE  
SECTION AA

NOTES:-

1. THE "LF" PRODUCTS MEET EUROPEAN UNION DIRECTIVES AND OTHER COUNTRY REGULATIONS AS DESCRIBED IN GS-22-008
2. LEAD FREE OR RoHS DIRECTIVE LABELING TO BE PROVIDED AS PER GS-14-920 FOR RoHS COMPATIBLE VERSION.

PERFORMANCES CHARACTERISTICS

VOLTAGE RATING : 250 VAC (rms)  
CURRENT RATING : 1,5 A AT 25 °C, 1 A AT 70 °C.  
INSULATION RESISTANCE : 1000MΩINITIAL, 100MΩMIN. AFTER TEST  
DIELECTRIC WITH-

STANDING VOLTAGE : 1000 VAC (rms).  
CONTACT RESISTANCE : 15mΩMAX. INITIAL, 5mΩMAX. RISE  
OF INITIAL VALUE AFTER TEST.

OPERATING TEMPERATURE\*: -40 °C TO +125 °C.  
INSERTION FORCE : 1 N MAX./CONTACT.  
WITHDRAWAL FORCE : 0,2 N MIN./CONTACT.

\*DEPENDING ON THE CABLE, THE MAX. TEMPERATURE CAN BE LOWER.  
FOR STANDARD PVC INSULATED CABLE : 105 °C MAX.

CONSTRUCTION

BODY MATERIAL : GLASS-REINFORCED THERMOPLASTIC (UL94V-0).  
CONTACT MATERIAL : PHOSPHOR BRONZE.  
CONTACT FINISH : 1.25 μm Au MIN. OVER 2 μm Ni MIN.  
IN CONTACT AREA  
SnPb ON I.D.C. TERMINAL FOR LEADED PRODUCTS.  
Sn (MATTE TIN) ON I.D.C. TERMINAL FOR LEAD FREE PRODUCTS.

CABLE : 3M FLEXIBLE TWISTED PAIR CABLE (WIRES &  
CABLE) TYPE 3782 PER UL STYLE/20488 OR  
TYPE 3783 PER UL STYLE/2935.

PART NUMBERS

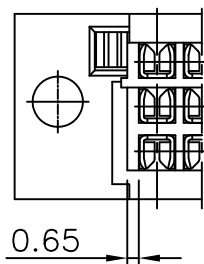
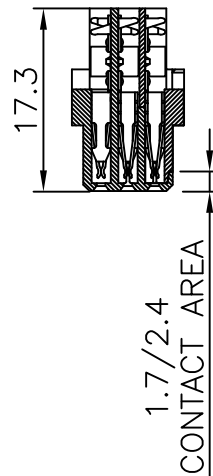
BPS8B96FLD100L9--- CONNECTOR FOR WIRE SIZE AWG28  
(CONTACT IDENTIFICATION : 1).

AWG WIRE SIZE MARKING

BPS8B96FLD100L9 : 28.  
BPS8B96FLD100L9LF : 28.

DATECODE MARKING

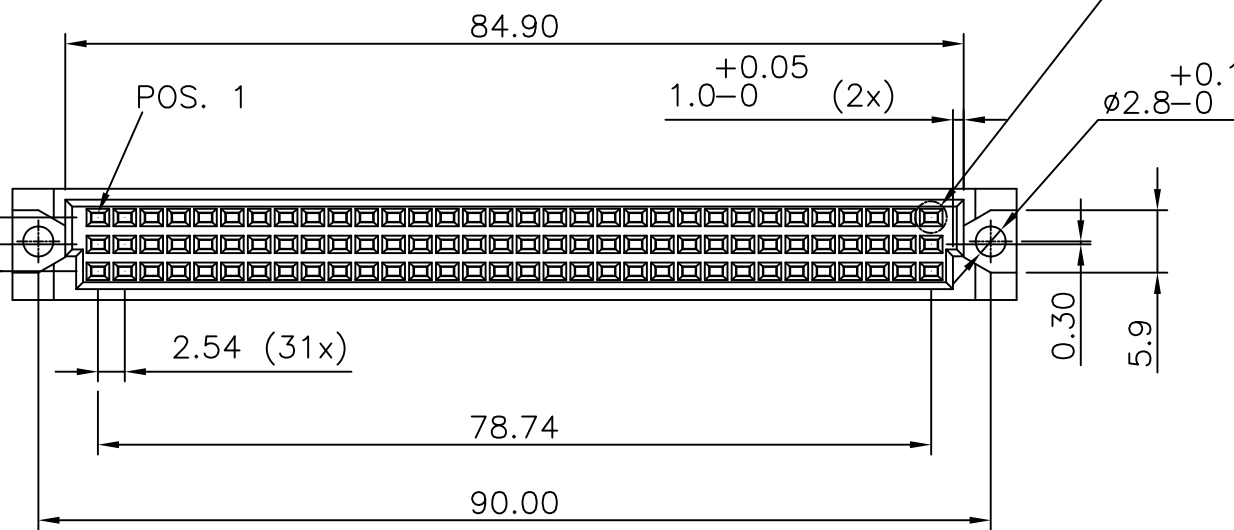
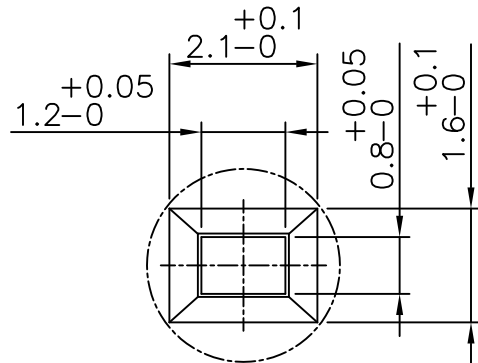
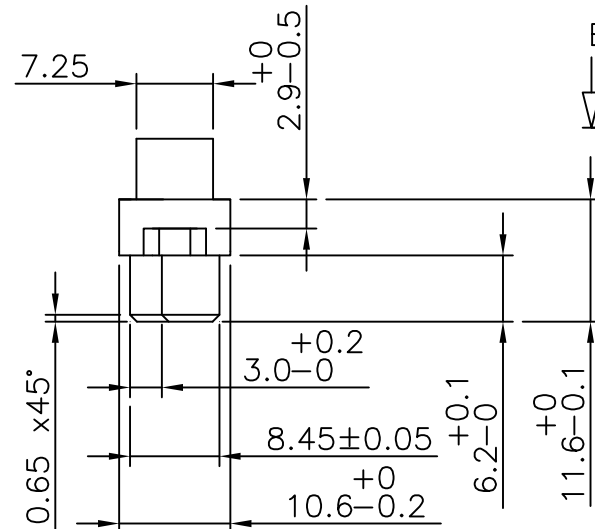
A + YEAR & WEEKCODE, EXAMPLE : A9950.



VIEW BB

DETAIL B

DETAIL B

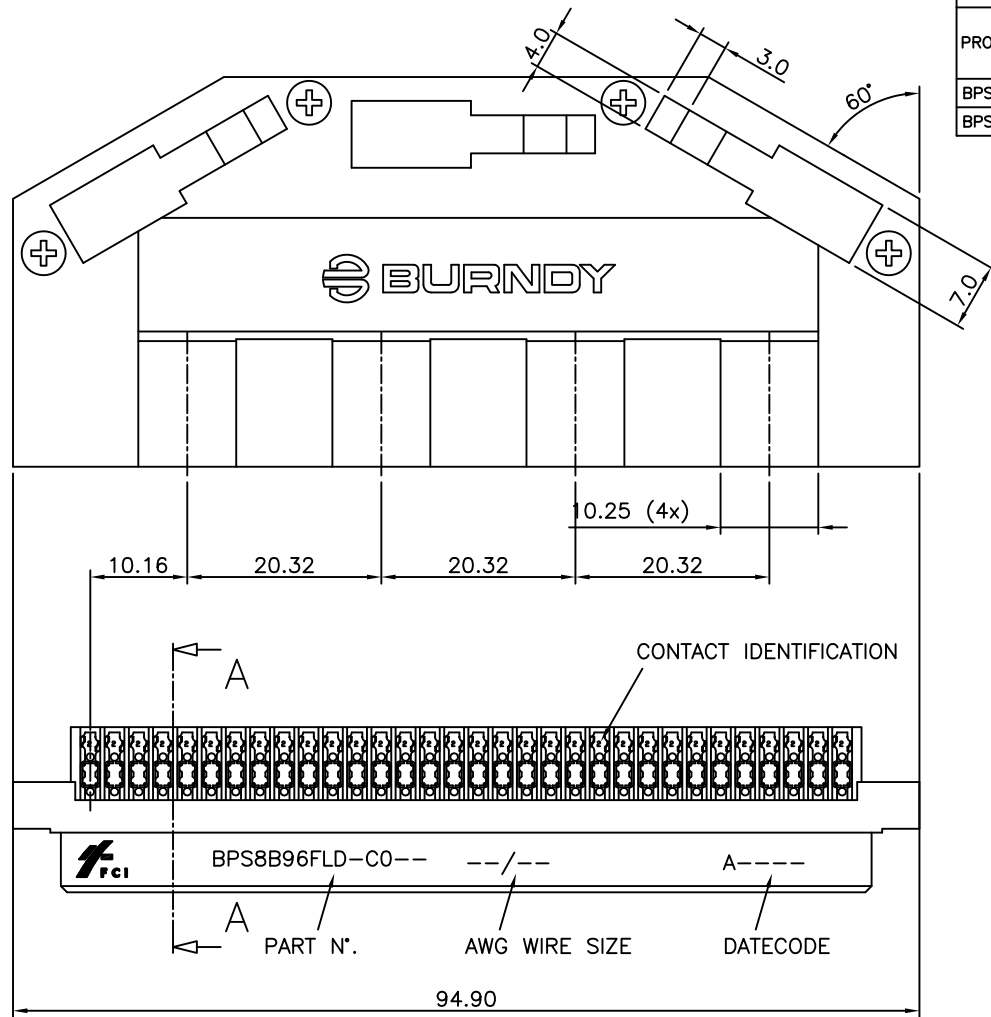


|                         |                   |    |      |                       |                               |                  |                                            |                               |  |              |
|-------------------------|-------------------|----|------|-----------------------|-------------------------------|------------------|--------------------------------------------|-------------------------------|--|--------------|
| mat'l. code<br>SEE NOTE |                   |    |      | surface<br>ISO 1302 ✓ | tolerance<br>ISO 406 ISO 1101 | projection<br>mm | product family<br>BPS8                     |                               |  |              |
| ltr                     | ecn no            | dr | date | tolerances unless     | otherwise specified           | mm               | title<br>ASSY BPS8<br>96 POS. A,B,C LOADED |                               |  |              |
| d                       |                   |    |      | angles                | linear                        |                  |                                            |                               |  |              |
|                         |                   |    |      | ±0°30'                |                               |                  |                                            |                               |  |              |
|                         |                   |    |      | dr                    | D.LEGRAND                     | 2000-10-20       | FCI                                        | dwg no                        |  | sheet 2 of 4 |
|                         |                   |    |      | engr                  | J.F.NOTTEAU                   | 2000-10-20       |                                            | 55365                         |  | size<br>A3   |
|                         |                   |    |      | chr                   | RAKHEE GEORGE                 | 2006-06-01       |                                            | type Product Customer Drawing |  |              |
|                         |                   |    |      | appd                  | RAKHEE GEORGE                 | 2006-06-01       |                                            |                               |  |              |
| sheet<br>index          | revision<br>sheet |    |      |                       |                               |                  |                                            |                               |  |              |



FCIconnect.com

Copyright FCI



|                |  |                   |                  |  |                                      |
|----------------|--|-------------------|------------------|--|--------------------------------------|
| PRODUCT NUMBER |  | BPS8B96FLD-C0---- | WITH "LF" SUFFIX |  | LEAD FREE OR RoHS COMPATIBLE PRODUCT |
|                |  |                   | WITHOUT SUFFIX   |  | LEADED PRODUCT                       |

|                   |           |                        |
|-------------------|-----------|------------------------|
| WIRE ACCOMODATION |           |                        |
| PRODUCT NUMBER    | WIRE SIZE | CONTACT IDENTIFICATION |
| BPS8B96FLD0C0--   | AWG28/30  | 0                      |
| BPS8B96FLD2C0--   | AWG24/26  | 2                      |

|                 |                                |
|-----------------|--------------------------------|
| CONTACT PLATING |                                |
| PLATING CODE    | PERFORMANCE LEVEL PER DIN41612 |
| Z0              | CLASS 3                        |
| Z1              | CLASS 2                        |
| E9              | CLASS 1                        |

## NOTES:-

1. THE "LF" PRODUCTS MEET EUROPEAN UNION DIRECTIVES AND OTHER COUNTRY REGULATIONS AS DESCRIBED IN GS-22-008
2. LEAD FREE OR RoHS DIRECTIVE LABELING TO BE PROVIDED AS PER GS-14-920 FOR RoHS COMPATIBLE VERSION.

## PERFORMANCES CHARACTERISTICS

VOLTAGE RATING : 250 VAC (rms)  
CURRENT RATING : 1,5 A AT 25 °C, 1 A AT 70 °C.  
INSULATION RESISTANCE : 1000MΩINITIAL, 100MΩMIN. AFTER TEST  
DIELECTRIC WITH-  
STANDING VOLTAGE : 1000 VAC (rms).  
CONTACT RESISTANCE : 15mΩMAX. INITIAL, 5mΩMAX. RISE OF INITIAL VALUE AFTER TEST.  
OPERATING TEMPERATURE\*: -40 °C TO +125 °C.  
INSERTION FORCE : 1 N MAX./CONTACT.  
WITHDRAWAL FORCE : 0,2 N MIN./CONTACT.

\*DEPENDING ON THE CABLE, THE MAX. TEMPERATURE CAN BE LOWER.  
FOR STANDARD PVC INSULATED CABLE : 105 °C MAX.

## CONSTRUCTION

BODY MATERIAL : GLASS-REINFORCED THERMOPLASTIC (UL94V-0).  
COVER MATERIAL : POLYPHENYLENE (PPO), COLOUR : BLACK.  
CONTACT MATERIAL : PHOSPHOR BRONZE.  
CONTACT FINISH : Au OVER Ni IN CONTACT AREA  
SnPb ON I.D.C. TERMINAL FOR LEADED PRODUCTS.  
Sn (MATTE TIN) ON I.D.C. TERMINAL FOR LEAD FREE PRODUCTS.  
Z0 : PERFORMANCE LEVEL PER DIN41612 CLASS 3  
Z1 : PERFORMANCE LEVEL PER DIN41612 CLASS 2  
E9 : PERFORMANCE LEVEL PER DIN41612 CLASS 1  
OTHERS : CONSULT FCI  
TIE-WRAP : OPTIONAL (PART N°. TF4)

## PART NUMBERS

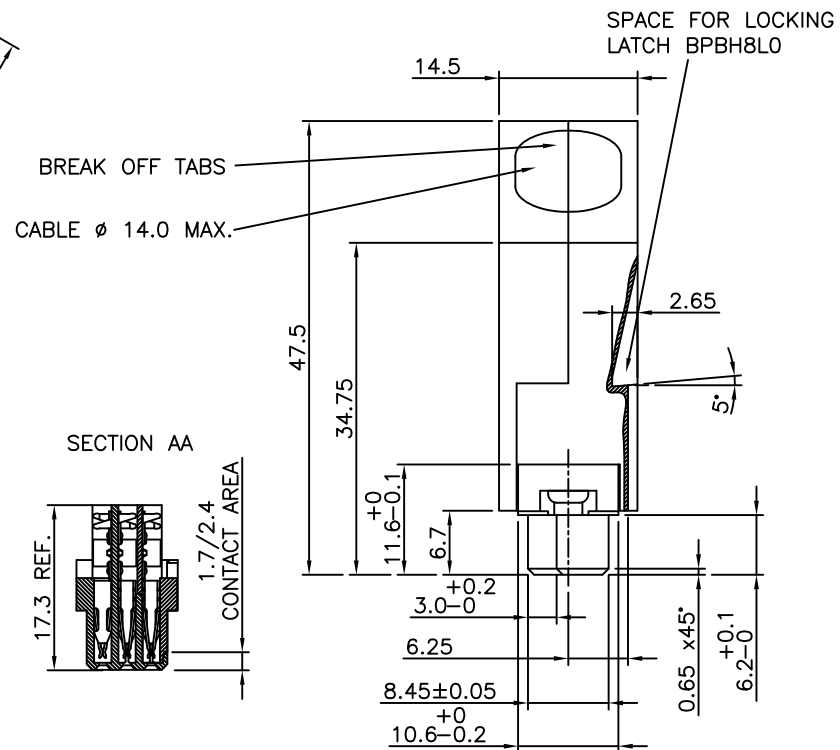
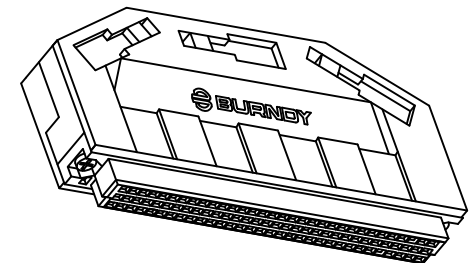
BPS8B96FLD0C0----CONNECTOR FOR WIRE SIZE AWG28, AWG30.  
(CONTACT IDENTIFICATION : 0).  
BPS8B96FLD2C0----CONNECTOR FOR WIRE SIZE AWG24, AWG26  
(CONTACT IDENTIFICATION : 2).

## AWG WIRE SIZE MARKING

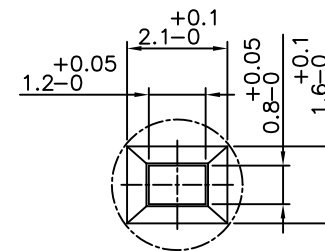
BPS8B96FLD0C0-- : 28/30.  
BPS8B96FLD0C0--LF : 28/30.  
BPS8B96FLD2C0-- : 24/26.  
BPS8B96FLD2C0--LF : 24/26.

## DATECODE MARKING

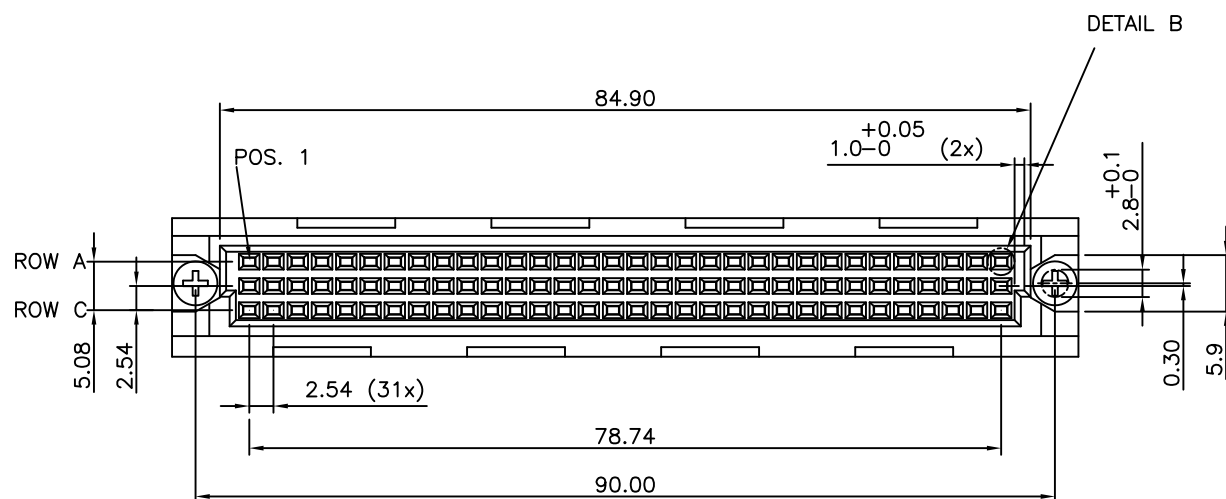
A + YEAR & WEEKCODE, EXAMPLE : A9950.



DETAIL B



SECTION AA



|             |        |                |      |                   |  |                     |  |            |  |                               |  |  |  |
|-------------|--------|----------------|------|-------------------|--|---------------------|--|------------|--|-------------------------------|--|--|--|
| mat'l. code |        |                |      | surface           |  | tolerance           |  | projection |  | product family                |  |  |  |
| SEE NOTES   |        |                |      | ISO 1302          |  | ISO 406             |  | ISO 1101   |  | BPS8                          |  |  |  |
| ltr         | ecn no | dr             | date | tolerances unless |  | otherwise specified |  | mm         |  | title                         |  |  |  |
| d           |        |                |      | angles            |  | linear              |  | scale      |  | ASSY BPS8                     |  |  |  |
|             |        |                |      | ±1°               |  |                     |  |            |  | 96 POS. A,B,C LOADED          |  |  |  |
|             |        |                |      | dr                |  | D.LEGRAND           |  | 2000-10-23 |  | dwg no                        |  |  |  |
|             |        |                |      | engr              |  | J.F.NOTTEAU         |  | 2000-10-23 |  | sheet 3 of 4                  |  |  |  |
|             |        |                |      | chr               |  | RAKHEE GEORGE       |  | 2006-06-01 |  | size                          |  |  |  |
|             |        |                |      | appd              |  | RAKHEE GEORGE       |  | 2006-06-01 |  | A3                            |  |  |  |
| sheet index |        | revision sheet |      |                   |  |                     |  |            |  | type Product Customer Drawing |  |  |  |



FCIconnect.com

Copyright FCI

PRODUCT NUMBER BPS8B96ABD200-----

|                  |                                      |
|------------------|--------------------------------------|
| WITH "LF" SUFFIX | LEAD FREE OR RoHS COMPATIBLE PRODUCT |
| WITHOUT SUFFIX   | LEADED PRODUCT                       |

| CONTACT PLATING |                                |
|-----------------|--------------------------------|
| PLATING CODE    | PERFORMANCE LEVEL PER DIN41612 |
| Z0              | CLASS 3                        |
| Z1              | CLASS 2                        |
| E9              | CLASS 1                        |

NOTES:-

1. THE "LF" PRODUCTS MEET EUROPEAN UNION DIRECTIVES AND OTHER COUNTRY REGULATIONS AS DESCRIBED IN GS-22-008
2. LEAD FREE OR RoHS DIRECTIVE LABELING TO BE PROVIDED AS PER GS-14-920 FOR RoHS COMPATIBLE VERSION.

PERFORMANCES CHARACTERISTICS

|                        |                                                               |
|------------------------|---------------------------------------------------------------|
| VOLTAGE RATING         | : 250 VAC (rms)                                               |
| CURRENT RATING         | : 1,5 A AT 25 °C, 1 A AT 70 °C.                               |
| INSULATION RESISTANCE  | : 1000MΩINITIAL, 100MΩMIN. AFTER TEST                         |
| DIELECTRIC WITH-       |                                                               |
| STANDING VOLTAGE       | : 1000 VAC (rms).                                             |
| CONTACT RESISTANCE     | : 15mΩMAX. INITIAL, 5mΩMAX. RISE OF INITIAL VALUE AFTER TEST. |
| OPERATING TEMPERATURE* | : -40 °C TO +125 °C.                                          |
| INSERTION FORCE        | : 1 N MAX./CONTACT.                                           |
| WITHDRAWAL FORCE       | : 0,2 N MIN./CONTACT.                                         |

\*DEPENDING ON THE CABLE, THE MAX. TEMPERATURE CAN BE LOWER.  
FOR STANDARD PVC INSULATED CABLE : 105 °C MAX.

CONSTRUCTION

|                  |                                                                                                                                           |
|------------------|-------------------------------------------------------------------------------------------------------------------------------------------|
| BODY MATERIAL    | : GLASS-REINFORCED THERMOPLASTIC (UL94V-0).                                                                                               |
| CONTACT MATERIAL | : PHOSPHOR BRONZE.                                                                                                                        |
| CONTACT FINISH   | : Au OVER Ni IN CONTACT AREA<br>SnPb ON I.D.C. TERMINAL FOR LEADED PRODUCTS.<br>Sn (MATTE TIN) ON I.D.C. TERMINAL FOR LEAD FREE PRODUCTS. |

|    |                                          |
|----|------------------------------------------|
| Z0 | : PERFORMANCE LEVEL PER DIN41612 CLASS 3 |
| Z1 | : PERFORMANCE LEVEL PER DIN41612 CLASS 2 |
| E9 | : PERFORMANCE LEVEL PER DIN41612 CLASS 1 |

PART NUMBERS

BPS8B96ABD200----- CONNECTOR FOR WIRE SIZE AWG24, AWG26  
(CONTACT IDENTIFICATION : 2).

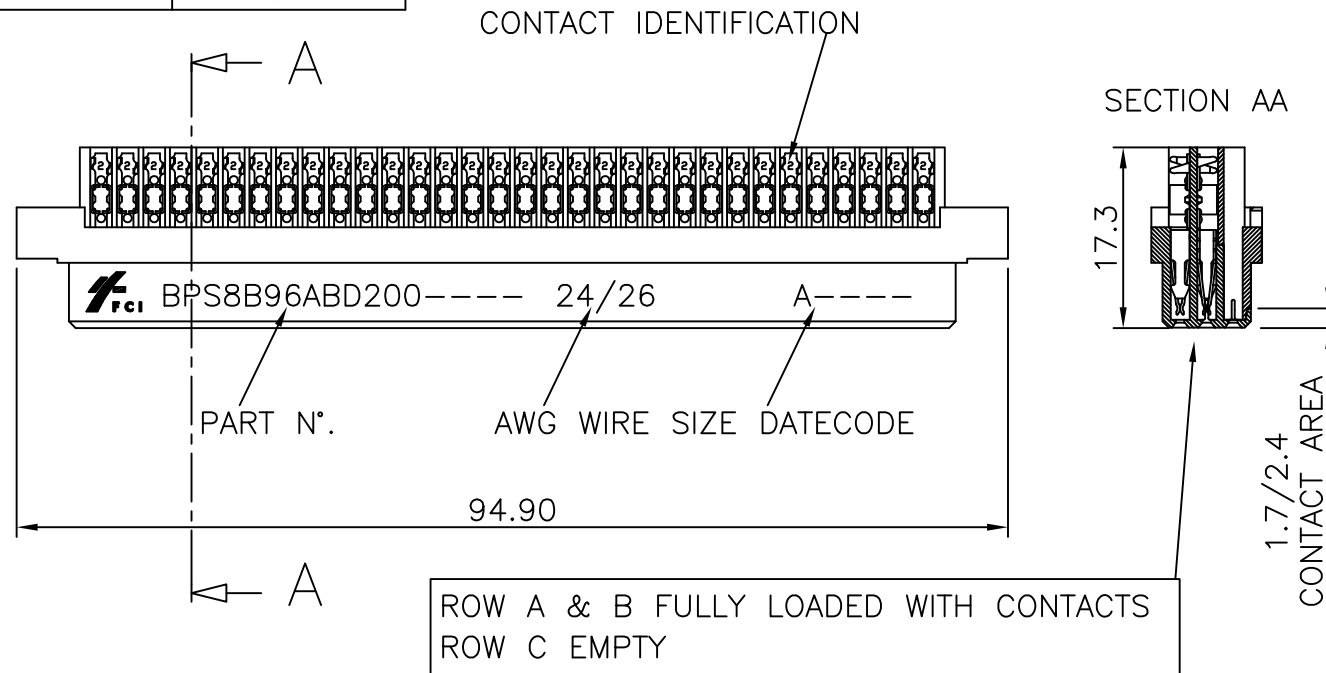
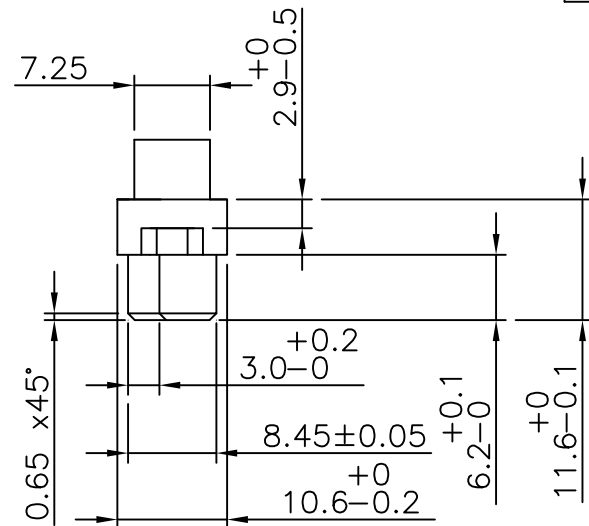
AWG WIRE SIZE MARKING

BPS8B96ABD200-- : 24/26.

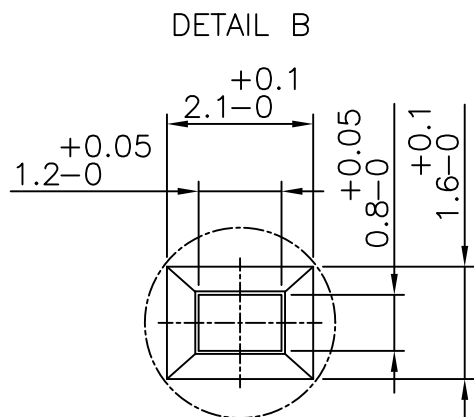
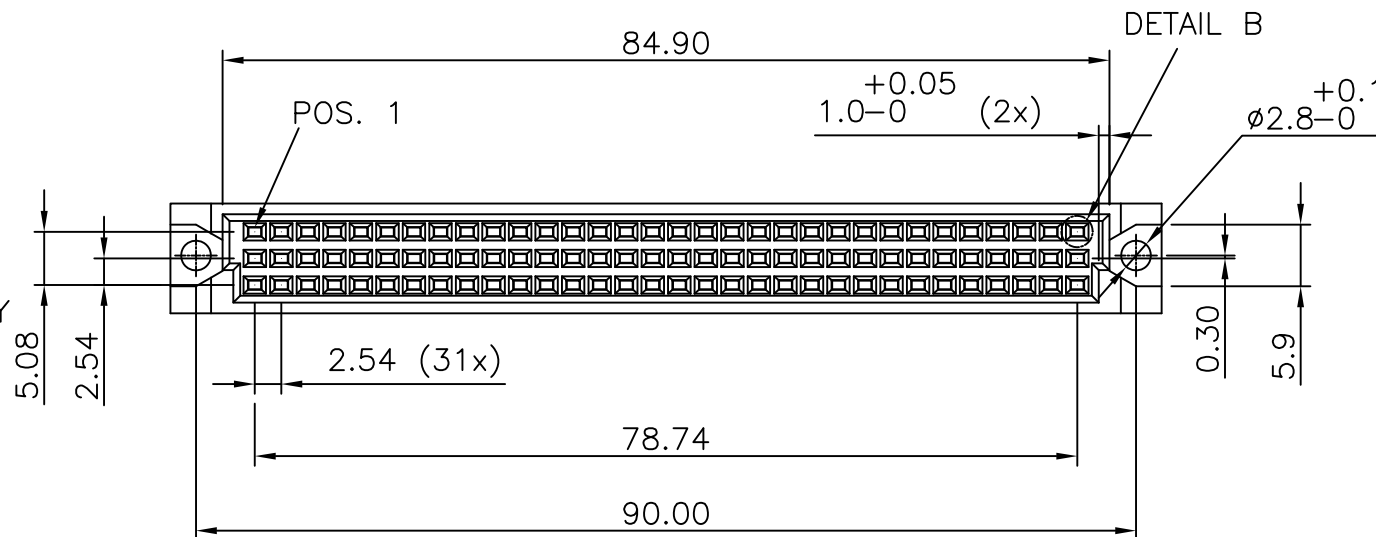
BPS8B96ABD200--LF : 24/26.

DATECODE MARKING

A + YEAR & WEEKCODE, EXAMPLE : A9950.



ROW A  
ROW B  
ROW C EMPTY



|                         |                |    |      |                       |                               |                  |                                          |  |  |  |
|-------------------------|----------------|----|------|-----------------------|-------------------------------|------------------|------------------------------------------|--|--|--|
| mat'l. code<br>SEE NOTE |                |    |      | surface<br>ISO 1302 ✓ | tolerance<br>ISO 406 ISO 1101 | projection<br>mm | product family<br>BPS8                   |  |  |  |
| ltr                     | ecn no         | dr | date | tolerances unless     | otherwise specified           |                  | title<br>ASSY BPS8<br>96 POS. A,B LOADED |  |  |  |
| E                       |                |    |      | angles                | linear                        |                  | dwg no<br>55365                          |  |  |  |
|                         |                |    |      | ±1°                   |                               | scale -          | sheet 4 of 4 size<br>A3                  |  |  |  |
|                         |                |    |      | dr                    | D.LEGRAND                     | 2000-10-20       | type<br>Product Customer Drawing         |  |  |  |
|                         |                |    |      | engr                  | J.F.NOTTEAU                   | 2000-10-20       |                                          |  |  |  |
|                         |                |    |      | chr                   | M JACOB                       | 2016-06-24       |                                          |  |  |  |
|                         |                |    |      | appd                  | BIJU K PAUL                   | 2016-06-24       |                                          |  |  |  |
| sheet index             | revision sheet |    |      |                       |                               |                  |                                          |  |  |  |