


10-660975-523		DOCUMENT NO.	
SHEET 1 OF 1		REV. A	
REVISIONS			
LTR	DESCRIPTION	DATE	
A	INITIAL RELEASE		

AGE	ON (NAME/DOB)	
REVISIONS		
LTR	DESCRIPTION	DATE
A	INITIAL RELEASE	

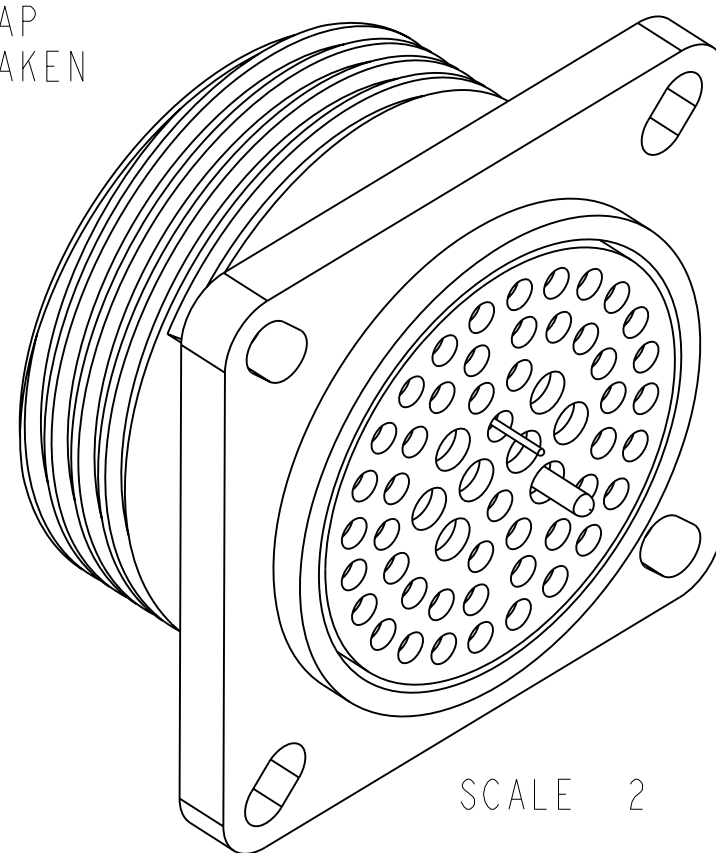
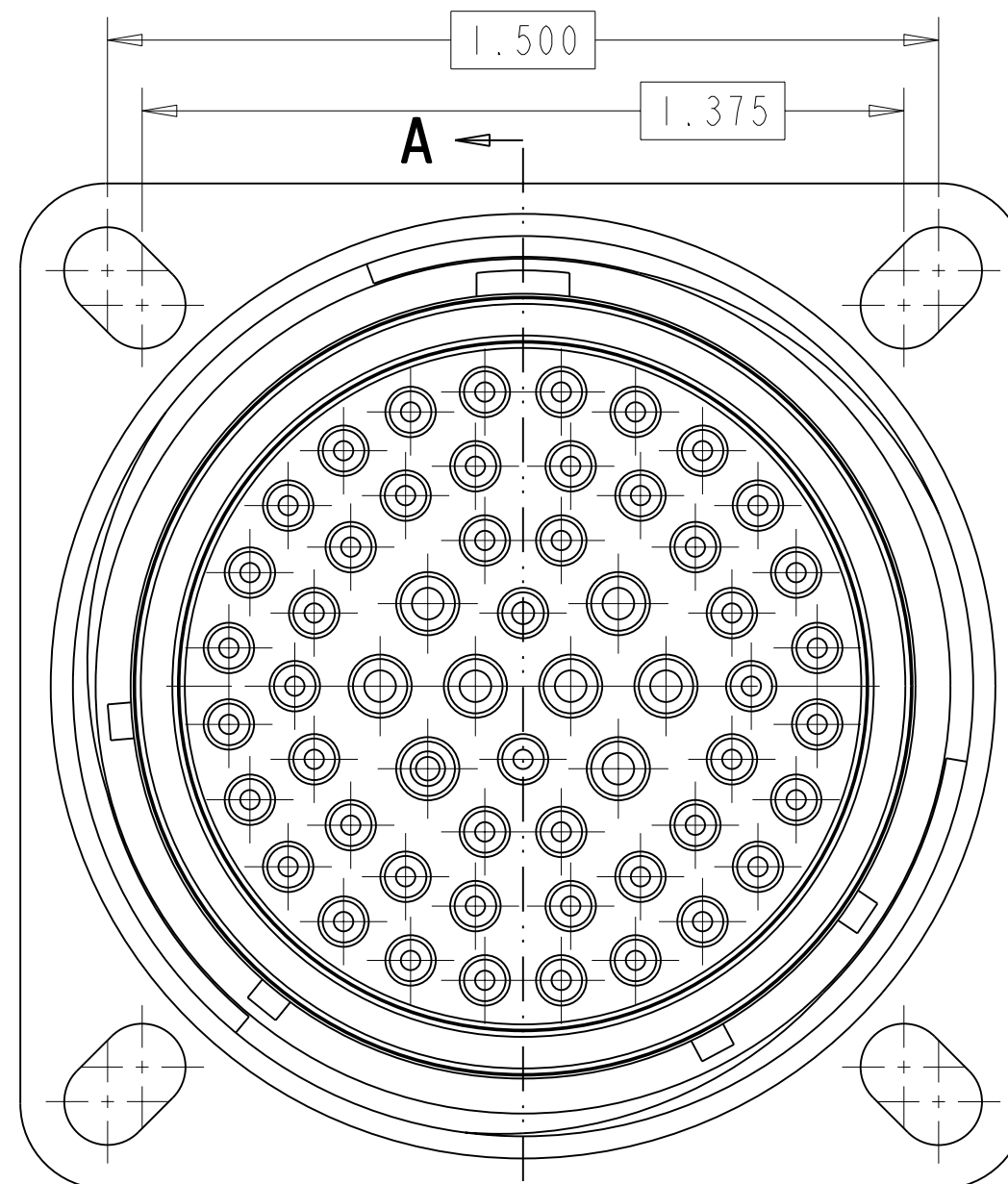
FOR UNIT ILLUSTRATION AND DIMENSIONAL  
DATA SEE 91-594530/539

KIT PART NUMBER	CONNECTOR PART NUMBER	KIT TYPE	PCB CONTACT PART NUMBER	CONTACTS QTY.	CTV NUMBER	CAP/CONTAINER
10-660975-523N	91-594539-04P		10-497640-045	48	CTVPS02RF-25-04PN	10-576237-002
10-660975-523A	91-594539-04G				CTVPS02RF-25-04PA	
10-660975-523B	91-594539-04I				CTVPS02RF-25-04PB	
10-660975-523C	91-594539-04K		10-497630-335	8	CTVPS02RF-25-04PC	10-576238-002
10-660975-523D	91-594539-04M				CTVPS02RF-25-04PD	
10-660975-523E	91-594539-04R				CTVPS02RF-25-04PE	

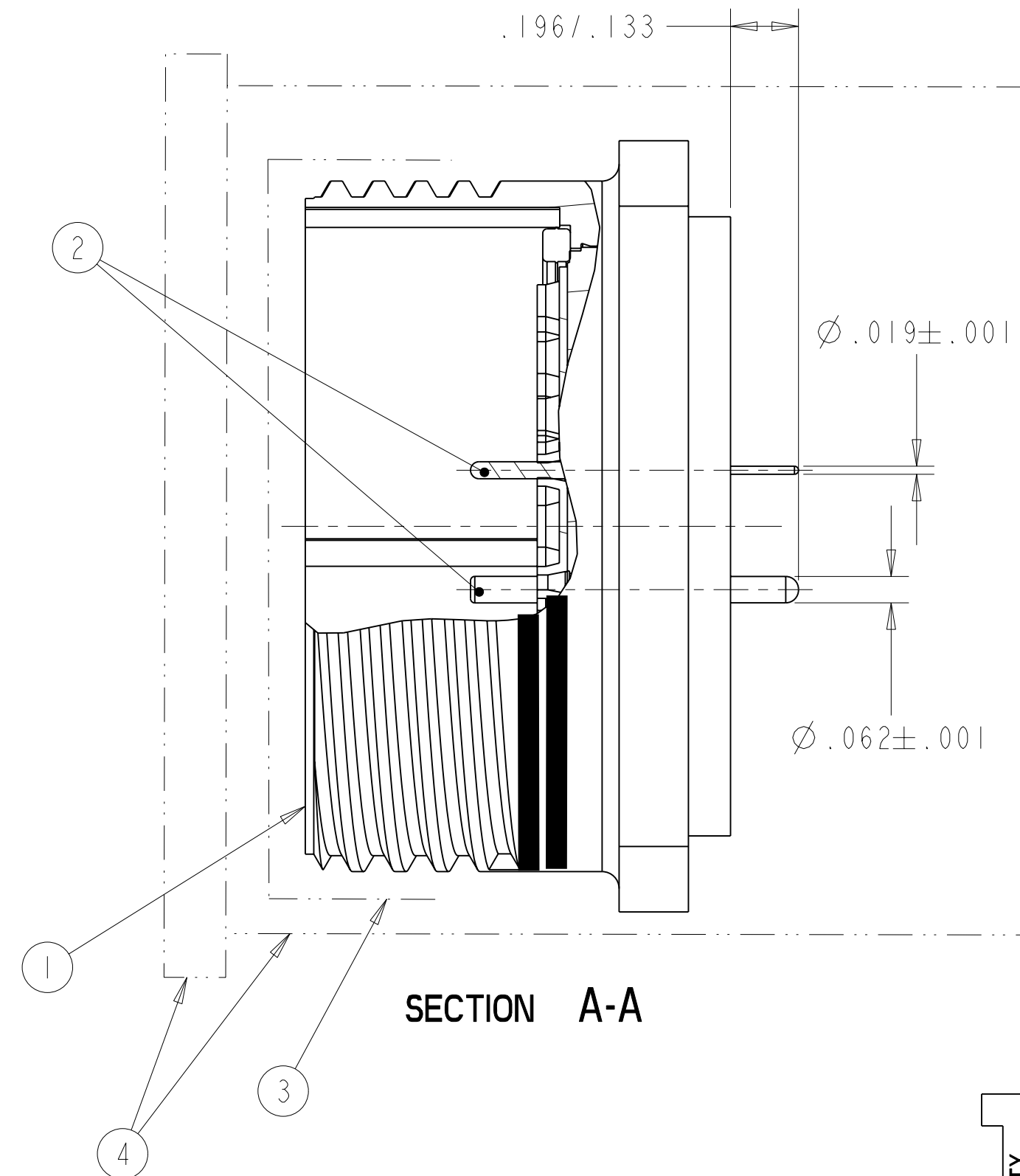
ALTERNATE—  
SHELL ROTATION

CONNECTOR-  
LESS STAMPING  
SEE NOTE 4  
FOR STAMPING REQUIREMENT


SEE NOTE 1—



SCALE 2



SECTION A-A



R-436

RELIABILITY

CONTROL

6. SEE WORK ORDER FOR PERMISSIBLE OR ALTERNATE STAMPING.
5. AFTER CONTACTS AND CAP HAVE BEEN INSTALLED, PLACE CONNECTOR INTO CONTAINER AND CAP. TO INSURE CAP LOCATION APPLY TAPE IF NEEDED. CARE MUST BE TAKEN NOT TO BEND THE CONTACTS.
4. STAMP "AMPHENOL", PART NUMBER, LOT NUMBER, AND DATE CODE (9-3895) PER 9-5788  
EXAMPLE:  
AMPHENOL 10-660975-523B 14001000 1410
3. PROCESS SPEC:  
PROCESS SHEET CONTROL 9-4796  
SPECIAL CONTROL 9-6000-5
2. PACKAGE PER PRODUCTION PROCESS SHEET.
1. KIT TYPE I CONTACTS SHIPPED UNASSEMBLED.  
KIT TYPE II CONTACTS SHIPPED ASSEMBLED IN CONNECTOR.

**NOTES:**

THE USE OF THIS DOCUMENT IS UNLIMITED.  
HOWEVER, DOCUMENTS REFERENCED HEREON  
MAY CONTAIN LIMITED RIGHTS DATA.


RELEASED / Mar . 20 2014, 11:54:08 AM

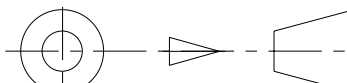
DOCUMENT NO.  
10-660975-523

SHEET 1 OF 1

REV.  
A

N/A	PRO/ENGINEER INFORMATION
N/A	Pro/e Model Used: 10-660975-523.ASSEM
NEXT ASSEMBLY	Drawing Name: 10-660975-523

UNLESS OTHERWISE SPECIFIED		SPECIFICATIONS
LINEAR DIMENSIONS ARE IN INCHES		MATERIAL SPEC.
TOLERANCES:		N/A
.XXXX = $\pm .0005$ ANGLES = $\pm 2^\circ$		
.XXX = $\pm .010$		
.XX = $\pm .03$		
.X = $\pm .1$		
-----		
DIM. & TOL. PER ASME Y14.5M;		PROCESS SPEC
DRM PER MIL-DTL-31000;		
OTHER Amphenol Sds. PER 9-3800		SEE NOTES 3,
LEGENDS:		
 = FLAG NOTE CALL OUT REFERENCE ONLY		

3	I	SEE COLUMN	CAP/CONTAINER	5
4	I	10-070524-001	CAP	5
2	SEE COLUMN		CONTACT	5
I	I	SEE COLUMN	CONNECTOR	
POS	QTY	PART NUMBER	DESCRIPTION	NOTE
PARTS LIST				
APPROVALS		DATE	<b>AMPHENOL CORPORATION</b> 40-60 DELAWARE AVENUE SIDNEY, N.Y. 13838	
PREPARED BY	D. ALGER	5-MAR-14	CONNECTOR KIT, TYPE CTVPS02RF-25-4P( ), PCB CONTACTS	
ENGINEER IN CHARGE	D. FREAR			
DESIGN MANAGER	E. SHEPLER			
DESIGN ACTIVITY GROUP	MILAERO			
THIRD ANGLE PROJECTION			SIZE <b>C</b>	CAGE CODE <b>77820</b>
			DOCUMENT NO. <b>10-660975-523</b>	REV. <b>A</b>
SCALE: NONE			REF: 91-594530/539	SHEET I OF I