



PRODUCT DATASHEET

Eya series

last update 19/10/2016

DETAILS

Product Number	CP11956_EYA-S
Family	Eya
Type	Assembly
Color	black
Diameter	30,4 mm
Height	29,1 mm
Style	round
Optic Material	PMMA
Holder Material	
Fastening	glue, pin
Status	production ready
ROHS Compliant	Yes
Date Updated	19/10/2016

OPTICAL PROPERTIES

LED	Viewing Angle	Light Beam	Effi- ciency	cd/lm	Connector
XP-G	8 deg	Spot	82 %	20.600	-
Platinum Dragon	7 deg	Spot	-	-	-



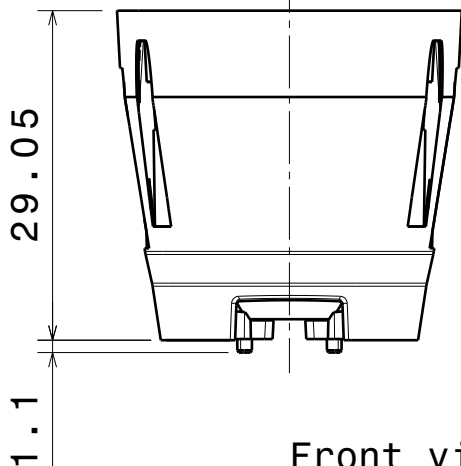
D

C

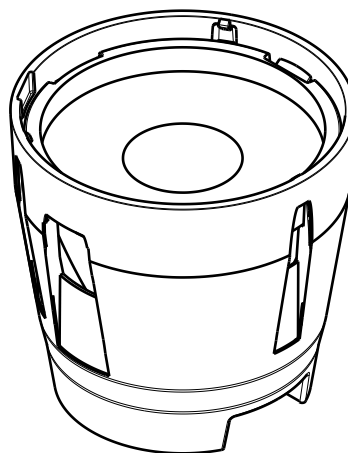
B

A

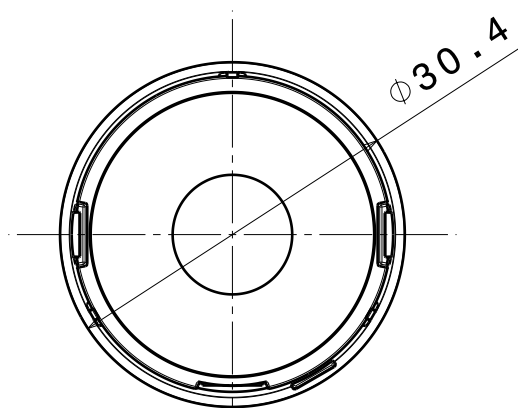
4



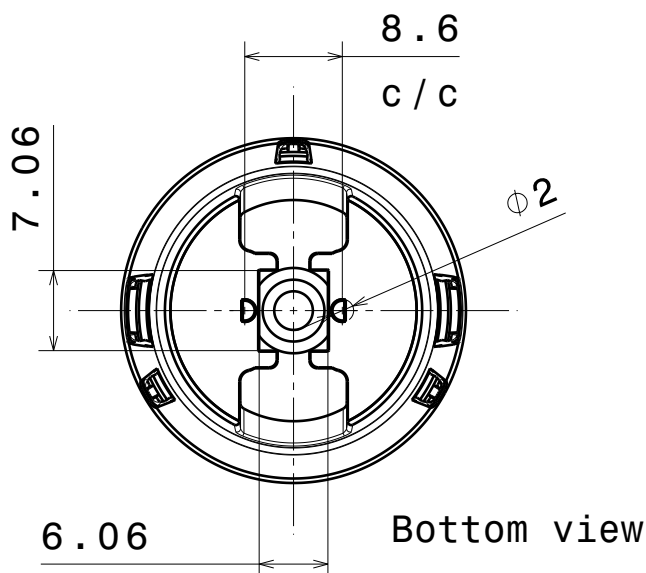
Front view



3



Top view



Bottom view

2

2

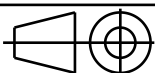
INDEX	PART NO	DESCRIPTION	MATERIAL	COLOUR
1	-	Eya lens	PMMA	
2	C11336	EYA-HLD	PC	black

Tolerances if not otherwise shown
According to DIN ISO 2768-1
Linear measures:
Up to 30mm class M, otherwise class C.
According to DIN ISO 2768-2
Form and position: class L

LEDiL

Ledil Oy
Salorankatu 10
FIN 24240 SALO
Finland

THIRD ANGLE PROJECTION:



DRAWING TITLE

Eya series

This drawing is the property
of LEDiL Oy. It may not be
reproduced, copied or
communicated without a written
agreement with LEDiL Oy.

SIZE

A4

PART NUMBER

CP11337, CP11956

SCALE

3:2

WEIGHT

11,6 g

SHEET

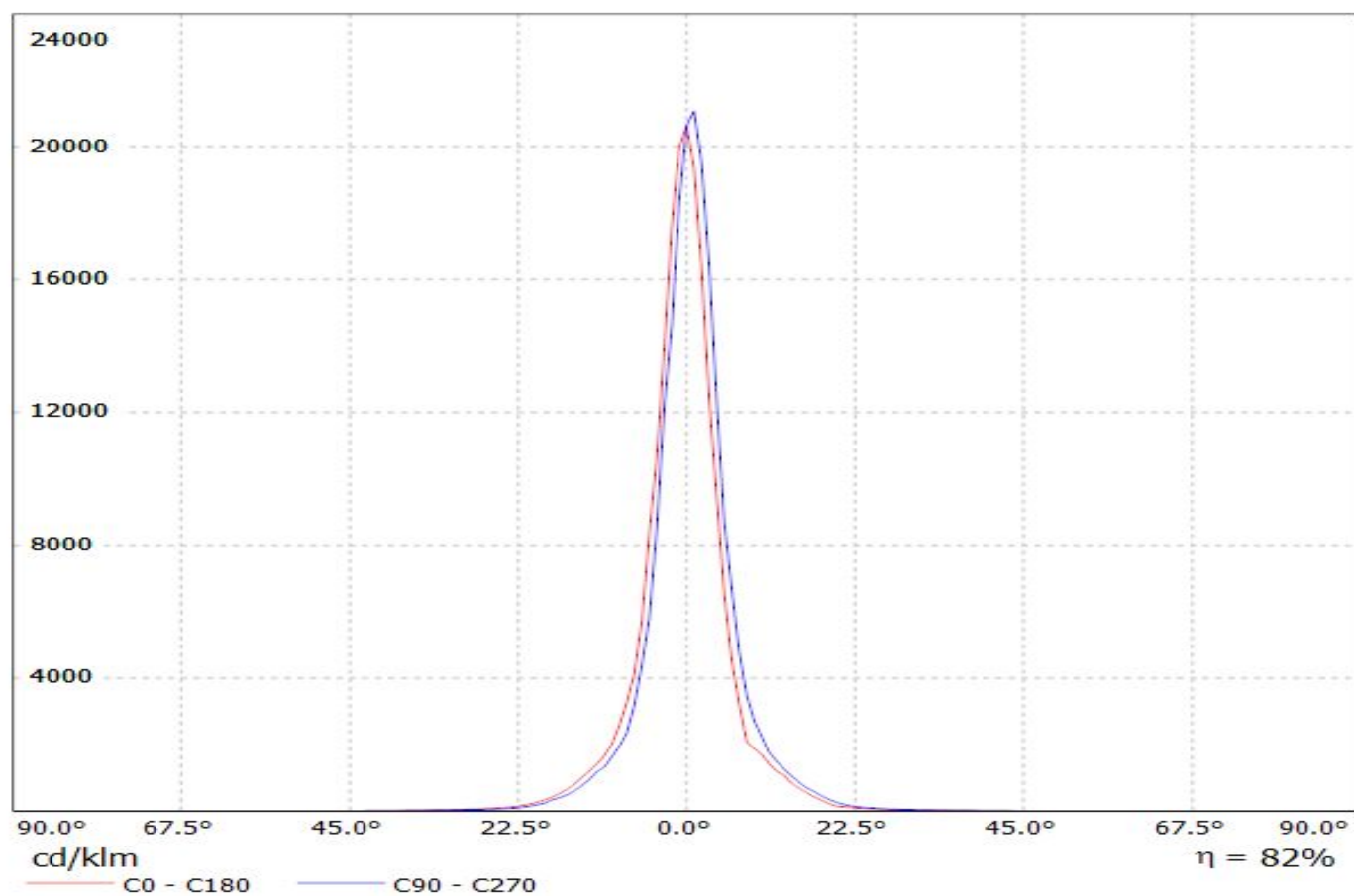
1/1

D

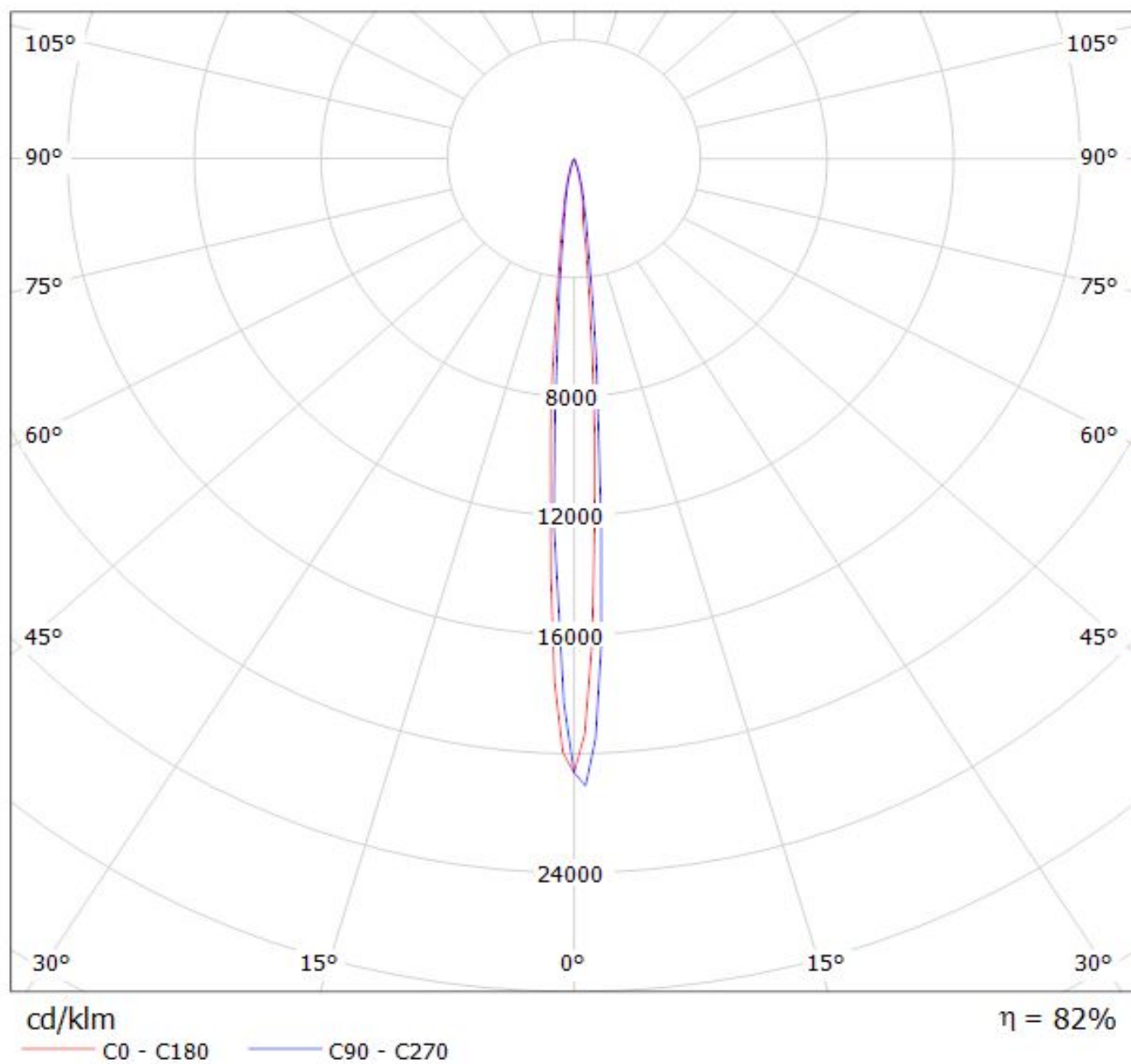
A

1

Luminaire: Ledil Oy
Lamps: 1 x CP11956_EYA-S_(XP-G)



Luminaire: Ledil Oy
Lamps: 1 x CP11956_EYA-S_(XP-G)



NOTE: The typical divergence will be changed by different color, chip size and chip position tolerance. The typical total divergence is the full angle measured where the luminous intensity is half of the peak value.