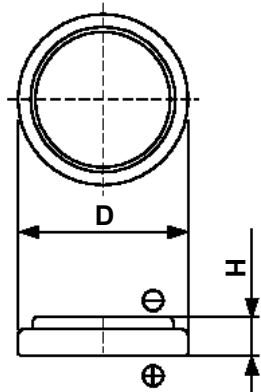


Cell Type CR2016v Specifications

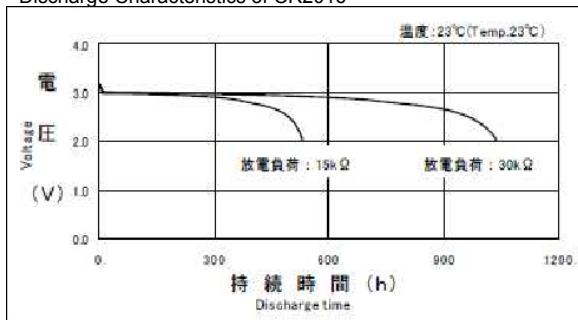


Nominal Voltage (V)	3
Nominal Capacity (mAh) ^{*1}	90
Standard Discharge Current (mA)	0.2
Operating Temperature Range (°C)	-20 ~ +70
Max. Dimensions (mm)	Diameter (D) 20.0 Height (H) 1.6
Weight (g)	1.7

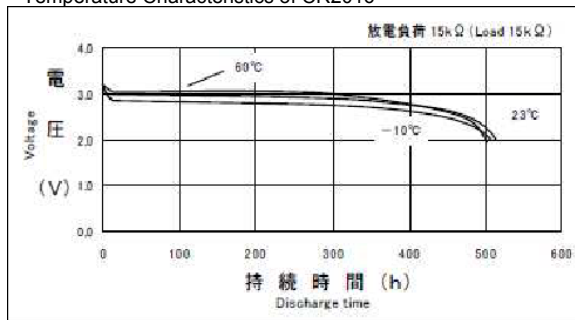
*1 Nominal capacity is determined at an end voltage of 2.0V when the battery is allowed to discharge at a standard current level at +23°C.

Typical Characteristics

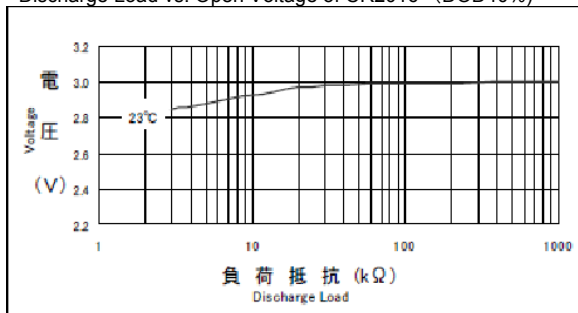
Discharge Characteristics of CR2016



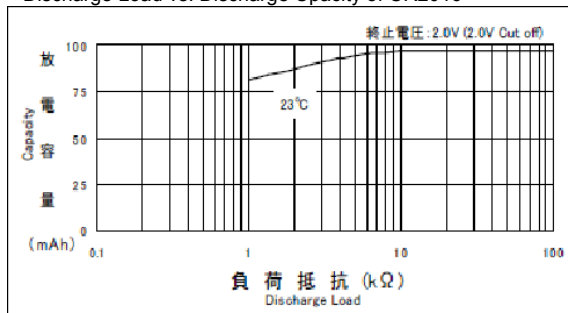
Temperature Characteristics of CR2016



Discharge Load vs. Open Voltage of CR2016 (DOD40%)



Discharge Load vs. Discharge Capacity of CR2016



Mouser Electronics

Authorized Distributor

Click to View Pricing, Inventory, Delivery & Lifecycle Information:

Unspecified:

CR2016