

# 3M™ HDC Socket

.100" Right Angle, PCB, 3 or 4-Row, Solder Tail or Press-Fit

HDC Series



- High density 3-row version, up to 240 contacts single bay
- Mates with 3-row single plugs and headers
- High density 4-row version, up to 320 contacts single bay
- Mates with 4-row single plugs and headers
- Low 2 oz. insertion force
- RoHS\* compliant. See the Regulatory Information Appendix (RIA) in the “RoHS compliance” section of [www.3Mconnectors.com](http://www.3Mconnectors.com) for compliance information (RIA E1 & C1 apply)

Date Modified: May 14, 2013

TS-1137-D  
Sheet 1 of 5

---

## Physical

### Insulation:

Material: Glass Filled Thermoplastic (LCP)

Flammability: UL 94V-0

Color: Black

### Contact:

Material: Copper Alloy

### Plating:

Underplating: 50  $\mu$ " [ 1.27  $\mu$ m ] min. Nickel

Wiping Area: See Ordering Information

Termination Area: See Ordering Information

**Marking:** Part Number and Date Code

---

## Electrical

**Current Rating:** 3.0 A per contact

**Insulation Resistance:** 1 x 10<sup>3</sup> M $\Omega$  min. at 500 V<sub>DC</sub>

**Withstanding Voltage:** 900 V<sub>AC</sub> for 1 minute

---

## Environmental

**Temperature Rating:** -55°C to +125°C

**Process Rating:** Maximum 260°C (per J-STD-020C)

**Moisture Sensitivity Level:** 1 (per J-STD-020C)

UL File No.: E68080



Electronic Solutions Division  
Interconnect Solutions  
<http://www.3Mconnectors.com>

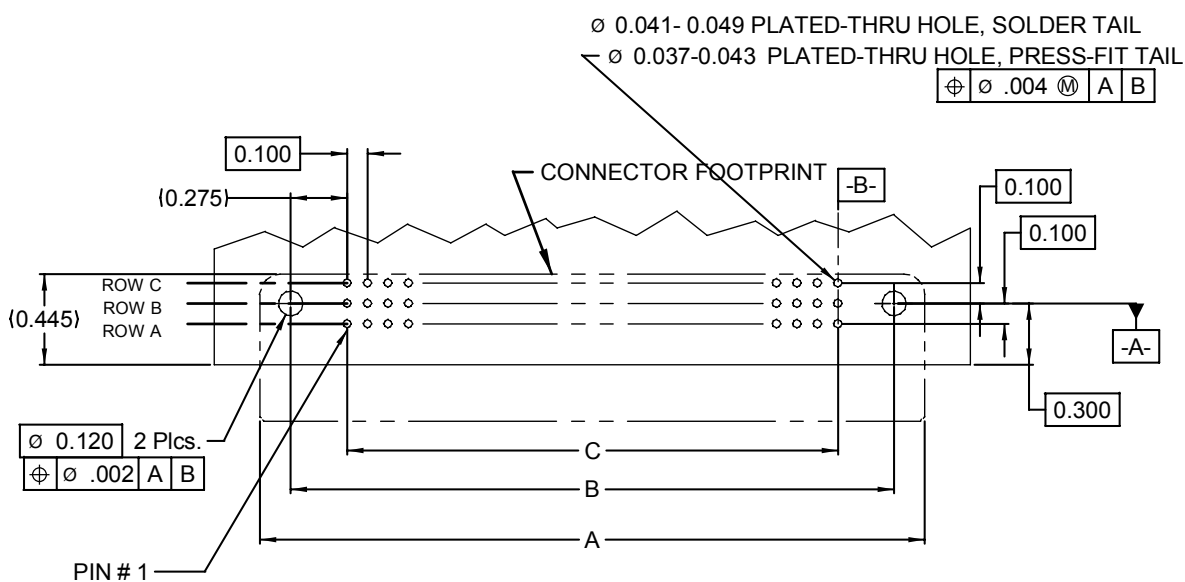
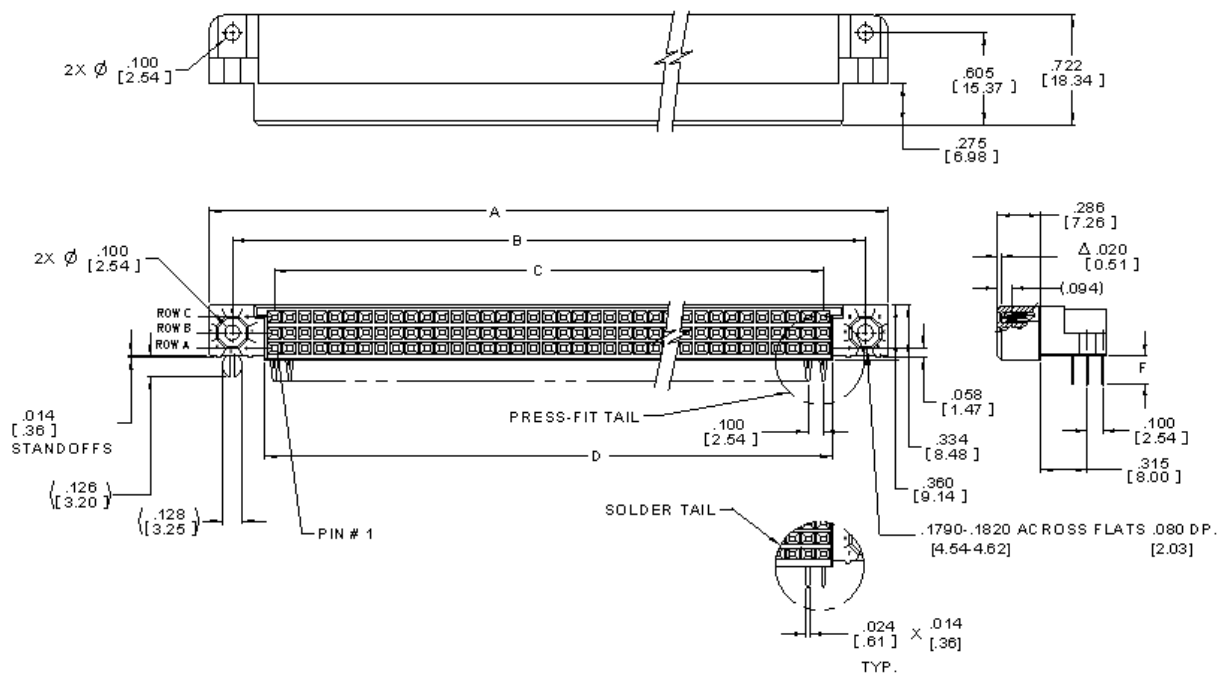
3M is a trademark of 3M Company.  
For technical, sales or ordering information call  
**800-225-5373**

# 3M™ HDC Socket

.100" Right Angle, PCB, 3 or 4-Row, Solder Tail or Press-Fit

HDC Series

## 3-Row Single Bay



## RECOMMENDED P.C.B. HOLE PATTERN

| Inch<br>[mm]           |          |           |            |
|------------------------|----------|-----------|------------|
| Tolerance Unless Noted |          |           |            |
|                        | .0       | .00       | .000       |
| Inch                   | $\pm .1$ | $\pm .01$ | $\pm .005$ |

[ ] Dimensions for  
Reference only

TS-1137-D  
Sheet 2 of 5



# 3M™ HDC Socket

.100" Right Angle, PCB, 3 or 4-Row, Solder Tail or Press-Fit

HDC Series

Product Table/Dimensions for 3- Row, Single Bay

| Description        | Contact Quantity | A                 | B                 | C                 | D                 |
|--------------------|------------------|-------------------|-------------------|-------------------|-------------------|
| HDC-S045-31XX-XXXX | 45               | 2.250<br>[57.15]  | 1.950<br>[49.53]  | 1.400<br>[35.56]  | 1.524<br>[38.71]  |
| HDC-S075-31XX-XXXX | 75               | 3.250<br>[82.55]  | 2.950<br>[74.93]  | 2.400<br>[60.96]  | 2.524<br>[64.11]  |
| HDC-S090-31XX-XXXX | 90               | 3.750<br>[95.25]  | 3.450<br>[87.63]  | 2.900<br>[73.66]  | 3.024<br>[76.81]  |
| HDC-S096-31XX-XXXX | 96               | 3.950<br>[100.33] | 3.650<br>[92.71]  | 3.100<br>[78.74]  | 3.224<br>[81.89]  |
| HDC-S102-31XX-XXXX | 102              | 4.150<br>[105.41] | 3.850<br>[97.79]  | 3.300<br>[83.82]  | 3.424<br>[86.97]  |
| HDC-S120-31XX-XXXX | 120              | 4.750<br>[120.65] | 4.450<br>[113.03] | 3.900<br>[99.06]  | 4.024<br>[102.21] |
| HDC-S135-31XX-XXXX | 135              | 5.250<br>[133.35] | 4.950<br>[125.73] | 4.400<br>[111.76] | 4.524<br>[114.91] |
| HDC-S150-31XX-XXXX | 150              | 5.750<br>[146.05] | 5.450<br>[138.43] | 4.900<br>[124.46] | 5.024<br>[127.61] |
| HDC-S165-31XX-XXXX | 165              | 6.250<br>[158.75] | 5.950<br>[151.13] | 5.400<br>[137.16] | 5.524<br>[140.31] |
| HDC-S180-31XX-XXXX | 180              | 6.750<br>[171.45] | 6.450<br>[163.83] | 5.900<br>[149.86] | 6.024<br>[153.01] |
| HDC-S195-31XX-XXXX | 195              | 7.250<br>[184.15] | 6.950<br>[176.53] | 6.400<br>[162.56] | 6.524<br>[165.71] |
| HDC-S210-31XX-XXXX | 210              | 7.750<br>[196.85] | 7.450<br>[189.23] | 6.900<br>[175.26] | 7.024<br>[178.41] |
| HDC-S225-31XX-XXXX | 225              | 8.250<br>[209.55] | 7.950<br>[201.93] | 7.400<br>[187.96] | 7.524<br>[191.11] |
| HDC-S228-31XX-XXXX | 228              | 8.350<br>[212.09] | 8.050<br>[204.47] | 7.500<br>[190.50] | 7.624<br>[193.65] |
| HDC-S240-31XX-XXXX | 240              | 8.750<br>[222.25] | 8.450<br>[214.63] | 7.900<br>[200.66] | 8.024<br>[203.81] |

## Ordering Information

**HDC - SXXX - X1XX - XXXX**

Contact Quantity  
See Contact Quantities  
on Product Table/  
Dimensions Charts

Row Quantity  
3 = Three Row  
4 = Four Row

Insulator Options  
1 = Single bay insulator

Termination Style / Lead length - Dim. F  
P1 - Press-fit Right Angle / 0.157 (4.00)  
S1 - Solder Right Angle / 0.110 (2.79)  
S2 - Solder Tail / 0.160 (4.06)

Plating  
Options:  
(See Plating  
Chart)

| Plating Chart  |                        |                          |   |
|----------------|------------------------|--------------------------|---|
| Plating Suffix | Press-Fit Terminations | Solder Tail Terminations | Plating composition   |
| KR             | (RIA E1 & C1 apply)    | (RIA E1 & C1 apply)      | 30 µ" [0.76 µm] Min. Au on Area 1<br>100 µ" [2.54 µm] Min. Whisker Mitigating Matte Tin on Area 4<br>50 µ" [1.27 µm] Min. Ni all over |

TS-1137-D  
Sheet 3 of 5



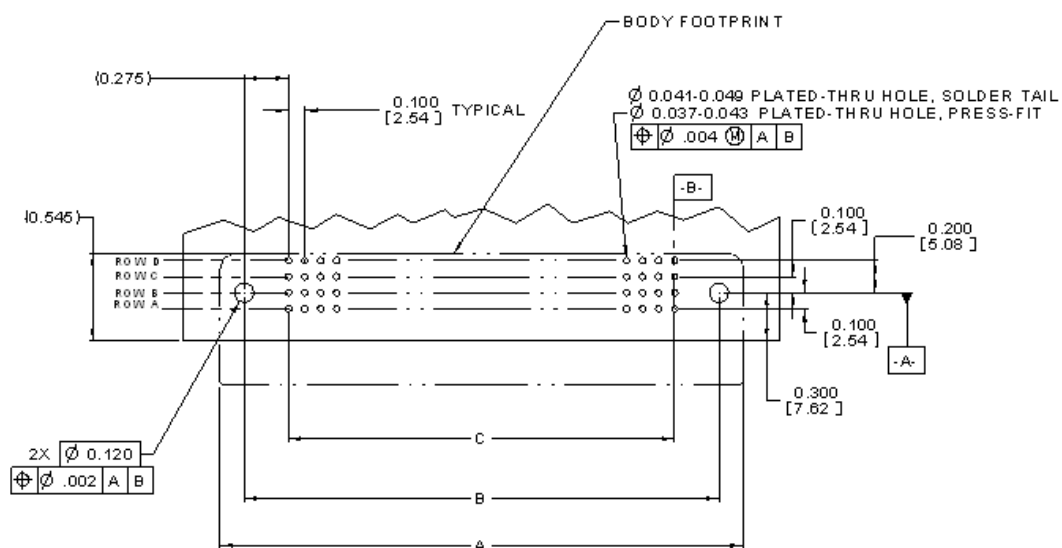
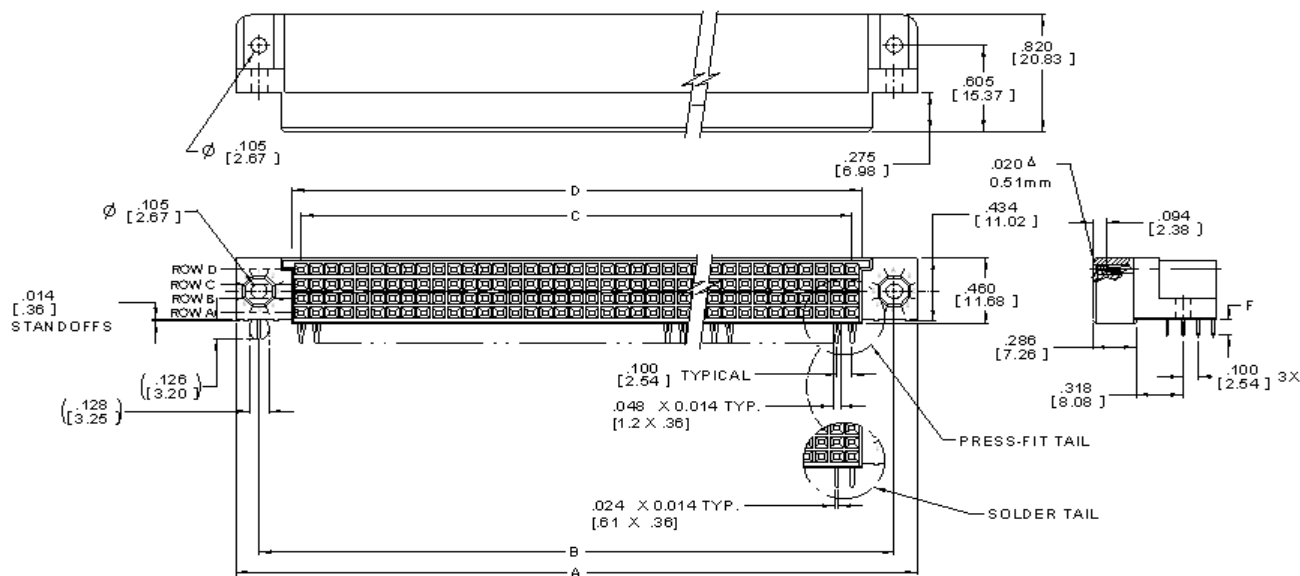
Electronic Solutions Division  
Interconnect Solutions  
<http://www.3Mconnectors.com>

3M is a trademark of 3M Company.  
For technical, sales or ordering information call  
**800-225-5373**

.100" Right Angle, PCB, 3 or 4-Row, Solder Tail or Press-Fit

HDC Series

## 4-Row Single Bay



RECOMMENDED P.C.B. HOLE PATTERN



TS-1137-D  
Sheet 4 of 5

# 3M™ HDC Socket

.100" Right Angle, PCB, 3 or 4-Row, Solder Tail or Press-Fit

HDC Series

| Product Table/Dimensions for 4-Row Socket Single Bay |              |                   |                   |                   |                   |
|--|--------------|-------------------|-------------------|-------------------|-------------------|
| Description  | Pin Quantity | A                 | B                 | C                 | D                 |
| HDC-S060-41XX-XXXX                                   | 60           | 2.250<br>[57.15]  | 1.950<br>[49.53]  | 1.400<br>[49.53]  | 1.524<br>[38.71]  |
| HDC-S076-41XX-XXXX                                   | 76           | 2.650<br>[67.31]  | 2.350<br>[59.69]  | 1.800<br>[45.72]  | 1.924<br>[48.87]  |
| HDC-S080-41XX-XXXX                                   | 80           | 2.750<br>[69.85]  | 2.450<br>[62.23]  | 1.900<br>[48.26]  | 2.024<br>[51.41]  |
| HDC-S100-41XX-XXXX                                   | 100          | 3.250<br>[82.55]  | 2.950<br>[74.93]  | 2.400<br>[60.96]  | 2.524<br>[64.11]  |
| HDC-S120-41XX-XXXX                                   | 120          | 3.750<br>[95.25]  | 3.450<br>[87.63]  | 2.900<br>[73.66]  | 3.024<br>[76.81]  |
| HDC-S128-41XX-XXXX                                   | 128          | 3.950<br>[100.33] | 3.650<br>[92.71]  | 3.100<br>[78.74]  | 3.224<br>[81.89]  |
| HDC-S140-41XX-XXXX                                   | 140          | 4.250<br>[107.95] | 3.950<br>[100.33] | 3.400<br>[86.36]  | 3.524<br>[89.51]  |
| HDC-S160-41XX-XXXX                                   | 160          | 4.750<br>[120.65] | 4.450<br>[113.03] | 3.900<br>[99.06]  | 4.024<br>[102.21] |
| HDC-S168-41XX-XXXX                                   | 168          | 4.950<br>[125.73] | 4.650<br>[118.11] | 4.100<br>[104.14] | 4.224<br>[107.29] |
| HDC-S180-41XX-XXXX                                   | 180          | 5.250<br>[133.35] | 4.950<br>[125.73] | 4.400<br>[111.76] | 4.524<br>[114.91] |
| HDC-S200-41XX-XXXX                                   | 200          | 5.750<br>[146.05] | 5.450<br>[138.43] | 4.900<br>[124.46] | 5.024<br>[127.61] |
| HDC-S216-41XX-XXXX                                   | 216          | 6.150<br>[156.21] | 5.850<br>[148.59] | 5.300<br>[134.62] | 5.424<br>[137.77] |
| HDC-S220-41XX-XXXX                                   | 220          | 6.250<br>[158.75] | 5.950<br>[151.13] | 5.400<br>[137.16] | 5.524<br>[140.31] |
| HDC-S240-41XX-XXXX                                   | 240          | 6.750<br>[171.45] | 6.450<br>[163.83] | 5.900<br>[149.86] | 6.024<br>[153.01] |
| HDC-S260-41XX-XXXX                                   | 260          | 7.250<br>[184.15] | 6.950<br>[176.53] | 6.400<br>[162.56] | 6.524<br>[165.71] |
| HDC-S280-41XX-XXXX                                   | 280          | 7.750<br>[196.85] | 7.450<br>[189.23] | 6.900<br>[175.26] | 7.024<br>[178.41] |
| HDC-S300-41XX-XXXX                                   | 300          | 8.250<br>[209.55] | 7.950<br>[209.55] | 7.400<br>[187.96] | 7.524<br>[191.11] |
| HDC-S320-41XX-XXXX                                   | 320          | 8.750<br>[222.25] | 8.450<br>[214.63] | 7.900<br>[200.66] | 8.024<br>[203.81] |

TS-1137-D  
Sheet 5 of 5



**Electronic Solutions Division**  
**Interconnect Solutions**  
<http://www.3Mconnectors.com>

3M is a trademark of 3M Company.  
For technical, sales or ordering information call  
**800-225-5373**

### **Important Notice**

All statements, technical information, and recommendations related to 3M's products are based on information believed to be reliable, but the accuracy or completeness is not guaranteed. Before using this product, you must evaluate it and determine if it is suitable for your intended application. You assume all risks and liability associated with such use. Any statements related to the product which are not contained in 3M's current publications, or any contrary statements contained on your purchase order shall have no force or effect unless expressly agreed upon, in writing, by an authorized officer of 3M.

### **Warranty; Limited Remedy; Limited Liability.**

This product will be free from defects in material and manufacture for a period of ninety (90) days from the time of purchase. **3M MAKES NO OTHER WARRANTIES INCLUDING, BUT NOT LIMITED TO, ANY IMPLIED WARRANTY OF MERCHANTABILITY OR FITNESS FOR A PARTICULAR PURPOSE.** If this product is defective within the warranty period stated above, your exclusive remedy shall be, at 3M's option, to replace or repair the 3M product or refund the purchase price of the 3M product. **Except where prohibited by law, 3M will not be liable for any indirect, special, incidental or consequential loss or damage arising from this 3M product, regardless of the legal theory asserted.**



#### **3M Electronics Solutions Division**

6801 River Place Blvd.  
Austin, TX 78726-9000  
U.S.A.  
1-800-225-5373  
[www.3Mconnectors.com](http://www.3Mconnectors.com)

Please recycle. Printed in USA.  
© 3M 2013. All rights reserved.  
RIA-2217B-E

3M is a trademark of 3M Company.

# AMEYA360

Components Supply Platform

Authorized Distribution Brand :



Website :

Welcome to visit [www.ameya360.com](http://www.ameya360.com)

Contact Us :

➤ Address :

401 Building No.5, JiuGe Business Center, Lane 2301, Yishan Rd  
Minhang District, Shanghai , China

➤ Sales :

Direct      +86 (21) 6401-6692  
  
Email        amall@ameya360.com  
  
QQ          800077892  
  
Skype        ameyasales1 ameyasales2

➤ Customer Service :

Email        service@ameya360.com

➤ Partnership :

Tel          +86 (21) 64016692-8333  
  
Email        mkt@ameya360.com