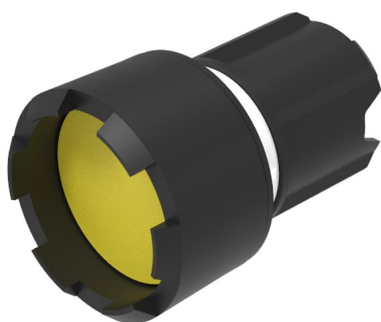


EAO – Your Expert Partner for Human Machine Interfaces

45-2131.3340.000 - Pushbutton actuator, Momentary

45-2131.3340.000 - Pushbutton actuator, Momentary



Attention: The preview is based on a sample product. This can differ from your current configuration.

Mounting

Design	raised
Mounting cut-out	Ø 22.5 mm

Front

Front shape	round, high
Front dimension	Ø 29.45 mm
Front ring material	Metal
Front ring colour	sandgrey

Other Attributes

Weight	0.021 kg
--------	----------

Operating-/Indication part

Lens optics	opaque
Lens material	Plastic
Lens colour	yellow
Lens profile	flat, lower than front ring

IP-Rating

Front protection	IP66, IP67, IP69K
------------------	-------------------

Actuator

Switching action	Momentary
Housing material	Plastic

Switching element

6

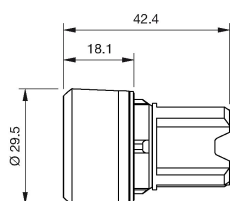
Function

Pushbutton

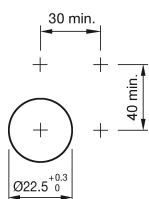
EAO – Your Expert Partner for Human Machine Interfaces

45-2131.3340.000 - Pushbutton actuator, Momentary

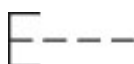
Dimensions



Mounting cut-outs



Wiring diagram



Legend

Switching action: B = Momentary