



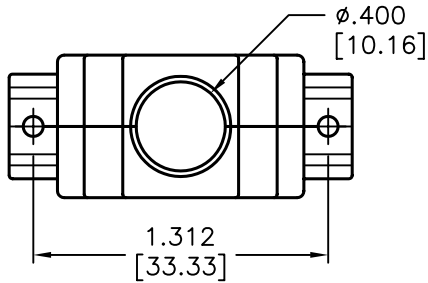
ALL RIGHTS RESERVED. NO PORTION OF THIS PUBLICATION, WHETHER IN WHOLE OR IN PART CAN BE REPRODUCED WITHOUT THE EXPRESS WRITTEN CONSENT OF SPC TECHNOLOGY.

SPC-F005.DWG

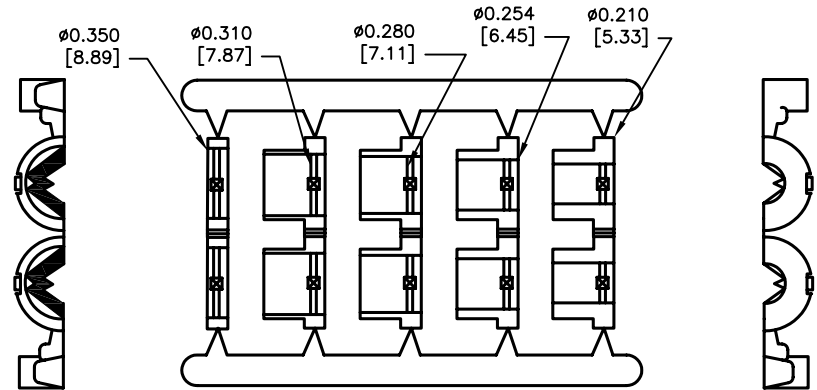
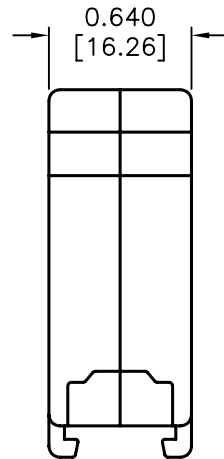
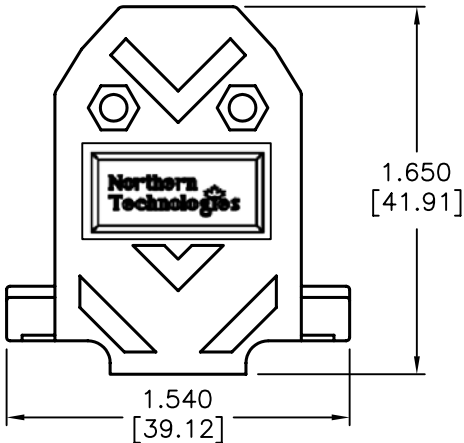
REVISIONS

DOC. NO. SPC-F005 * Effective: 7/8/02 * DCP No: 1398

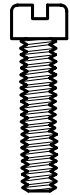
DCP #	REV	DESCRIPTION	DRAWN	DATE	CHECKD	DATE	APPRVD	DATE
1789	A	RELEASED	DCM	2/15/07	TL	3/9/07	JWM	3/12/07



Connector Cover:
Material: Thermoplastic, UL94V-0, Gray



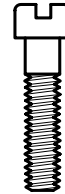
Insert Tree:
Material: Polypropylene Homopolymer, Black



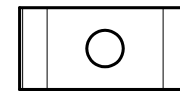
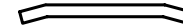
#4-40 x 7/16", fillister head
machine screw, C1018 Steel,
Zinc Plated
(Hexavalent Chromium Free)
(2 pcs)



#4-40, #2 Blank Hex Nut,
C1010 Steel, Zinc Plated
(Hexavalent Chromium Free)
(2 pcs)



#4-40 x 1/2", fillister head captive
screw, C1018 Steel, Zinc Plated
(Hexavalent Chromium Free)
(2 pcs)



#4 Saddle Washer, C.R. Steel,
Zinc Plated
(Hexavalent Chromium Free)
(2 pcs)

DISCLAIMER:
ALL STATEMENTS AND TECHNICAL INFORMATION CONTAINED HEREIN ARE BASED UPON INFORMATION AND/OR TESTS WE BELIEVE TO BE ACCURATE AND RELIABLE. SINCE CONDITIONS OF USE ARE BEYOND OUR CONTROL, THE USER SHALL DETERMINE THE SUITABILITY OF THE PRODUCT FOR THE INTENDED USE AND ASSUME ALL RISK AND LIABILITY WHATSOEVER IN CONNECTION THEREWITH.

TOLERANCES:

UNLESS OTHERWISE
SPECIFIED,
DIMENSIONS ARE
FOR REFERENCE
PURPOSES ONLY.

DRAWN BY:

Dan McVicker

CHECKED BY:

Tom Lee

APPROVED BY:

Jeff McVicker

DATE:

2/15/07

DATE:

3/9/07

DATE:

3/12/07

DRAWING TITLE:

D-Sub cover, 15 Pin, Plastic, Straight

SIZE

A

DWG. NO.

SPC14926

ELECTRONIC FILE

80K5367.dwg

REV

A

SCALE: NTS

U.O.M.: INCHES [mm]

SHEET: 1 OF 1