



# PRODUCT DATASHEET

## Strada-D series

last update 10/6/2014

### DETAILS

Product Number	CA11180_STRADA-DW
Family	Strada-D
Type	Assembly
Color	clear
Diameter	19,6 x 15,7 mm
Height	10,8 mm
Style	rectang
Optic Material	PMMA
Holder Material	
Fastening	screw, tape
Status	production ready
ROHS Compliant	Yes
Date Updated	10/06/2014



### OPTICAL PROPERTIES

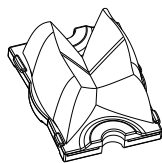
LED	Viewing Angle	Light Beam	Effi- ciency	cd/lm	Connector
Golden Dragon+	96+148 deg	Streetligh...	92 %	-	-

D

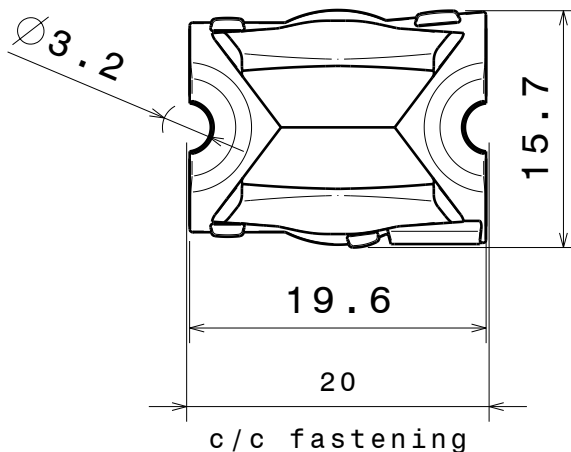
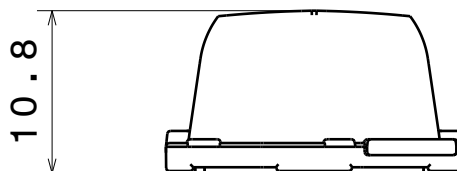
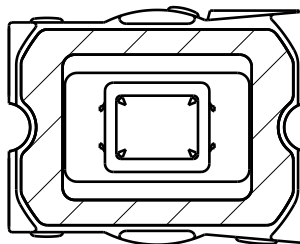
C

B

A



Isometric view  
Scale: 1:1



Top view

Material:  
lens PMMA  
tape PU foam with PSA

This drawing is our property.  
It can't be reproduced  
or communicated without  
our written agreement.

LEDIL

L  
T  
F  
F

e  
e  
l  
i

N  
n

d  
h

DRAWING TITLE

Datasheet Strada-DW-GD assy

DRAWN BY

p

DATE

20.01.2010

CHECKED BY

t

k

DATE

08.10.2009

DESIGNED BY

hh

DATE

01.10.2009

SIZE

A4

DRAWING NUMBER

CA11180

REV

1

SCALE

2:1

WEIGHT (g)

SHEET

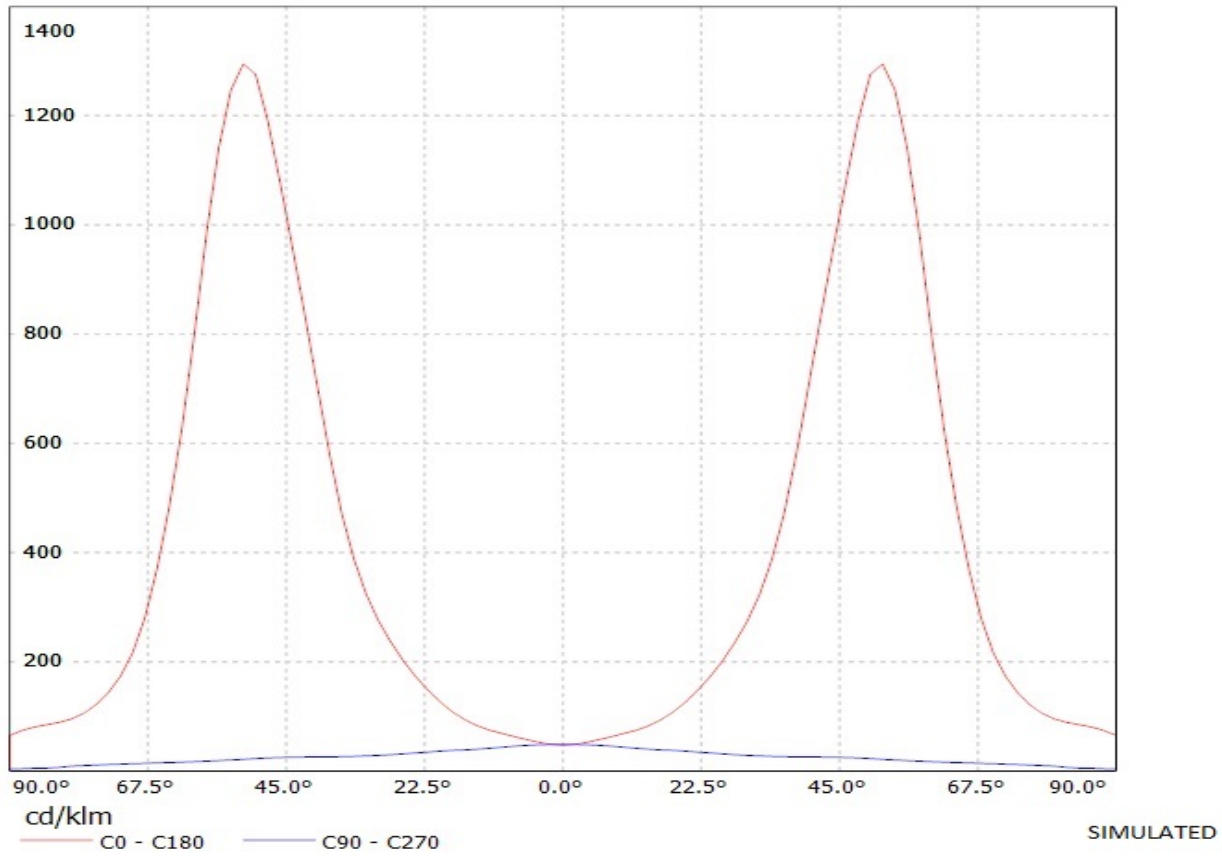
1/1

D

A

## Ledil Oy C10757\_Strada-DW-XR C10757\_Strada-DW-XR / LDC (Linear)

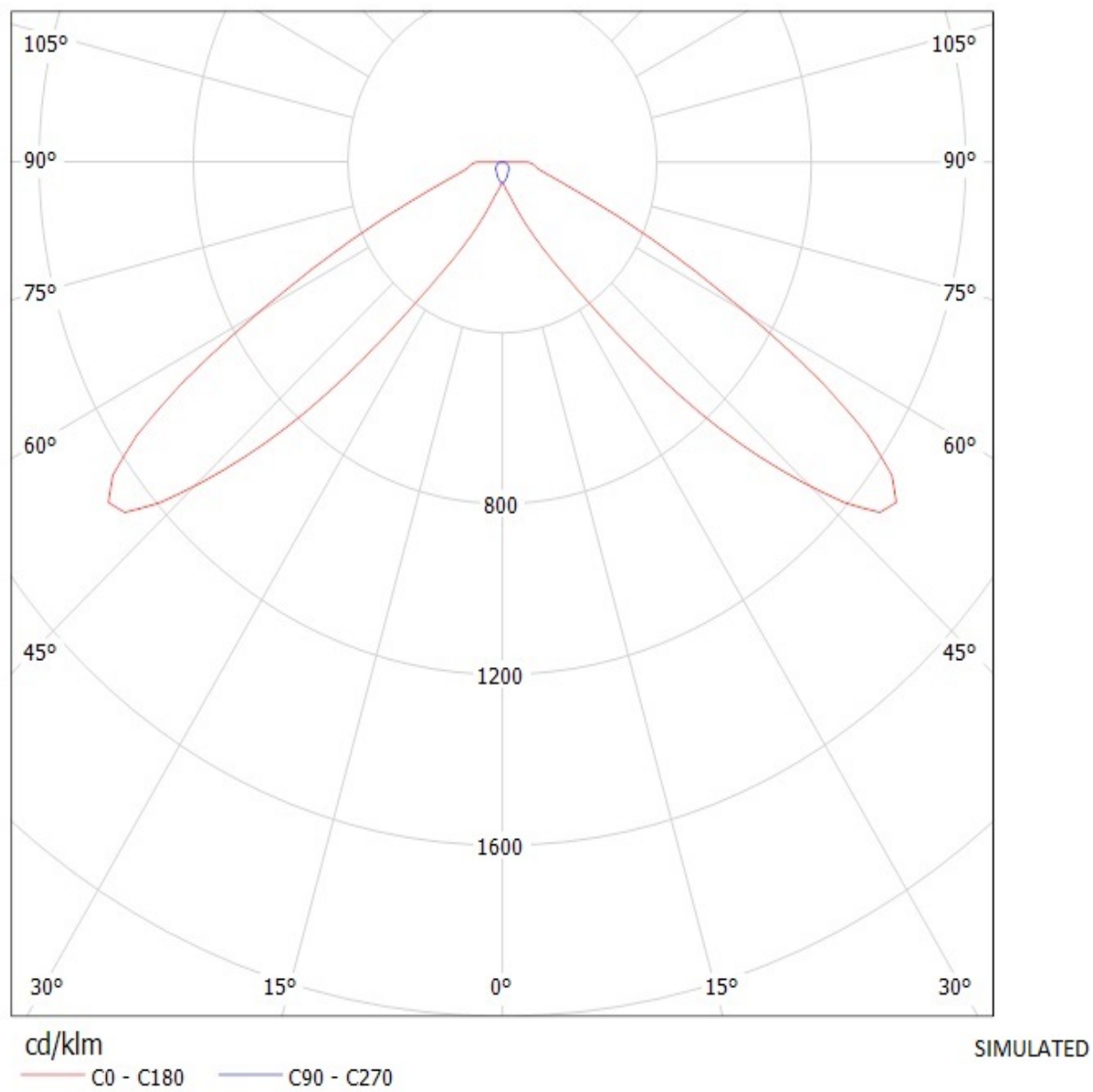
Luminaire: Ledil Oy C10757\_Strada-DW-XR C10757\_Strada-DW-XR  
Lamps: 1 x Cree XR-E (White)



## Ledil Oy C10757\_Strada-DW-XR C10757\_Strada-DW-XR / LDC (Polar)

Luminaire: Ledil Oy C10757\_Strada-DW-XR C10757\_Strada-DW-XR

Lamps: 1 x Cree XR-E (White)



**NOTE: The typical divergence will be changed by different color, chip size and chip position tolerance. The typical total divergence is the full angle measured where the luminous intensity is half of the peak value.**