

J

I

H

G

F

E

D

C

B

A

13

12

11

10

9

8

7

6

5

4

3

2

1

J

I

H

G

F

E

D

C

B

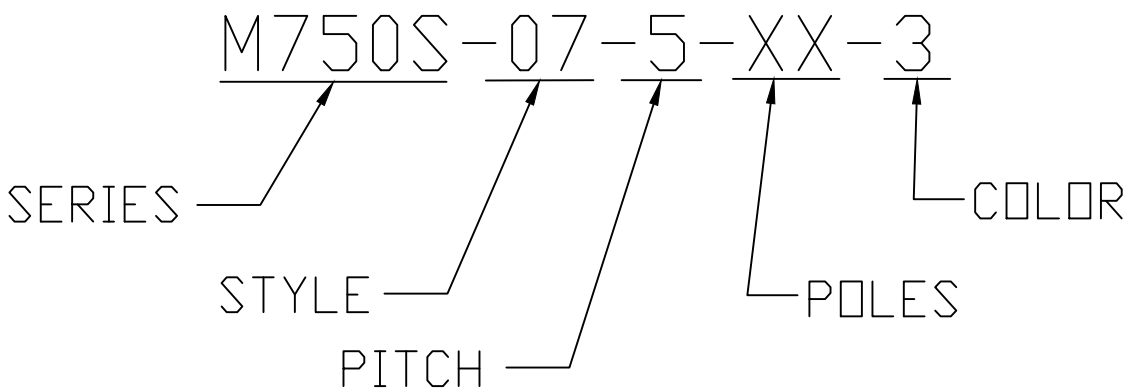
A

PART NUMBER DATA

CIRCUITS	PART NUMBER	ENGINEERING NUMBER	COLOR	A IN mm		B IN mm	
2	397310002	M750S-07-5-02-3	GREEN	.53	13.4	.300	7.62
3	397310003	M750S-07-5-03-3	GREEN	.83	21.1	.600	15.24
4	397310004	M750S-07-5-04-3	GREEN	1.13	28.7	.900	22.86
5	397310005	M750S-07-5-05-3	GREEN	1.43	36.3	1.200	30.48
6	397310006	M750S-07-5-06-3	GREEN	1.73	43.9	1.500	38.10
7	397310007	M750S-07-5-07-3	GREEN	2.03	51.5	1.800	45.72
8	397310008	M750S-07-5-08-3	GREEN	2.33	59.2	2.100	53.34
9	397310009	M750S-07-5-09-3	GREEN	2.63	66.8	2.400	60.96
10	397310010	M750S-07-5-10-3	GREEN	2.93	74.4	2.700	68.58
11	397310011	M750S-07-5-11-3	GREEN	3.23	82.0	3.000	76.20
12	397310012	M750S-07-5-12-3	GREEN	3.53	89.6	3.300	83.82

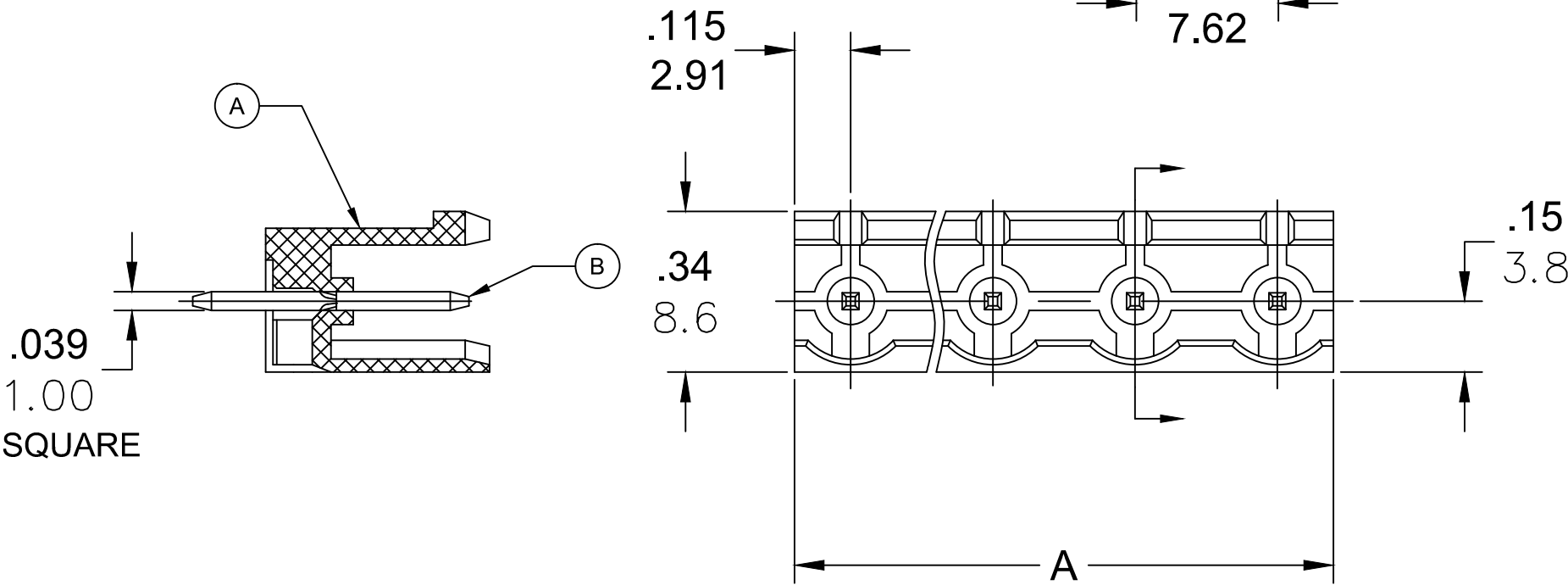
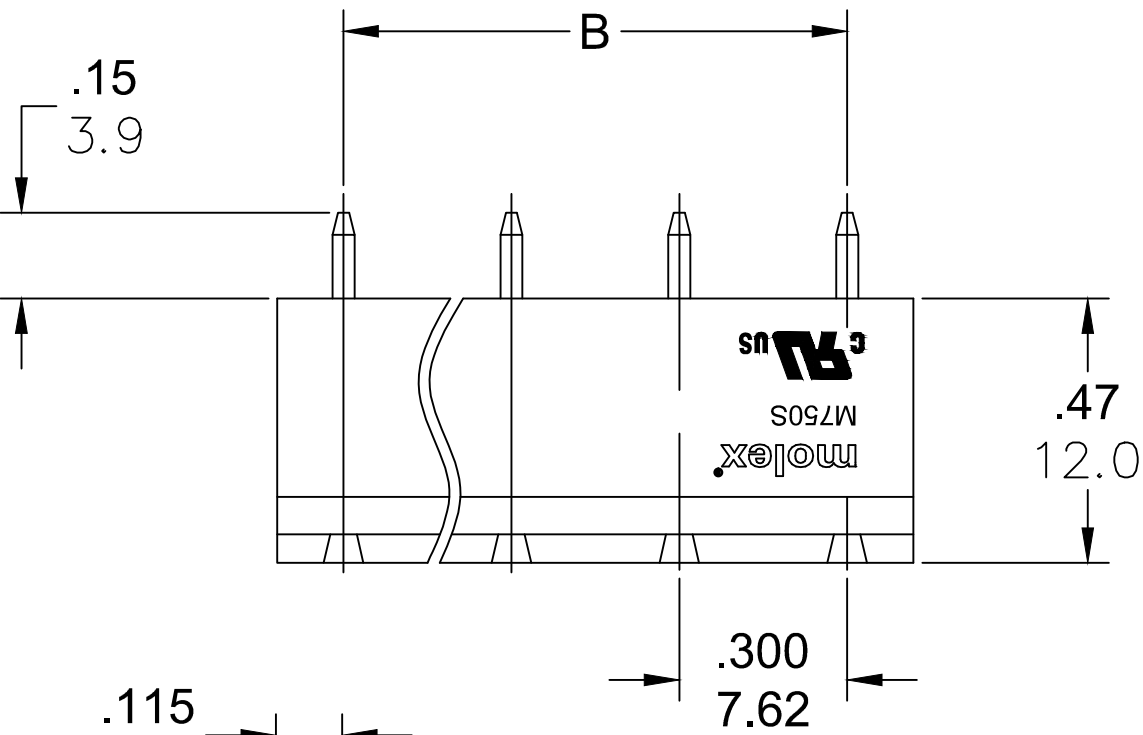
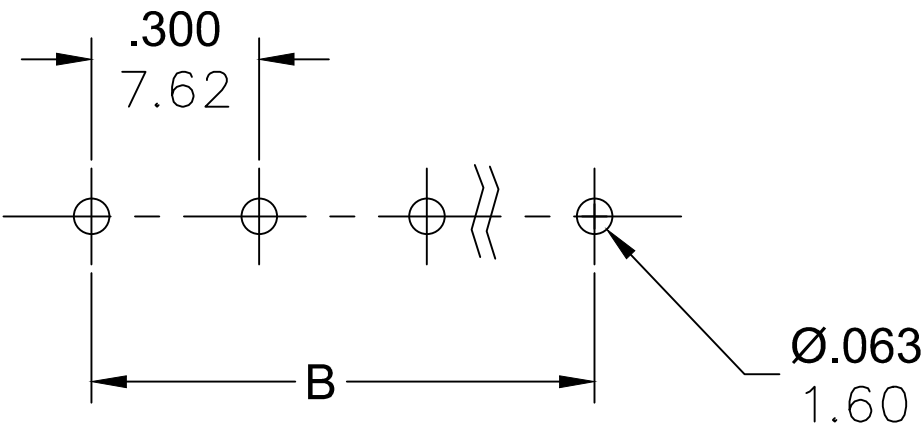
REF. LAST 2 DIGITS OF PART NUMBER EQUALS NUMBER OF POLES

ENGINEERING NUMBER LEGEND





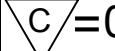
CONTACT FACTORY FOR OPTIONAL COLORS

PCB LAYOUT



SPECIFICATIONS:

1. MATERIAL:
- A. BODY: PA66, UL94 V-0
- B. TERMINAL: BRASS, TIN PLATED
2. RATING: 15A AT 51-150V, 10A AT 151-300V
3. OPERATING TEMPERATURE: -40°C + 105°C
4. DIELECTRIC VOLTAGE WITHSTAND: AC 2500V FOR 1 MINUTE
5. INSULATION RESISTANCE: DC 500V, 500MΩ.
6. RATED IMPULSE VOLTAGE: 4000V, PLUS AND MINUS 5 TIMES EACH
7. MAX SOLDERING TEMP: 260°C (500°F) FOR 5 SECONDS
8. DIMS SHOWN ARE FOR REFERENCE ONLY

RELEASED EC NO: PG2014-1533 DRWN: RSTONE 2014/03/21 CHKD: G FARNSW APPR: JFMURPHY 2014/10/16	DESCRIPTION	QUALITY SYMBOL	GENERAL TOLERANCES (UNLESS SPECIFIED)			DIMENSION STYLE IN/MM		SCALE ---	DESIGN UNITS METRIC	 THIRD ANGLE PROJECTION	
		 =0  =0		mm	INCH	DRAWN BY RSTONE	DATE 2014/03/21	TITLE 7.62MM EURO HEADER VERTICAL OPEN ENDS			
			4 PLACES	±---	±---	CHECKED BY G FARNSW	DATE ----				
			3 PLACES	±---	±.005	APPROVED BY JFMURPHY	DATE 2014/10/16	MOLEX INCORPORATED			
			2 PLACES	±0.13	±.01	MATERIAL NO. SEE CHART					
			1 PLACE	±0.3	±---	SIZE C		THIS DRAWING CONTAINS INFORMATION THAT IS PROPRIETARY TO MOLEX INCORPORATED AND SHOULD NOT BE USED WITHOUT WRITTEN PERMISSION			
		ANGULAR ±---°			DRAFT WHERE APPLICABLE MUST REMAIN WITHIN DIMENSIONS						
A	REV										