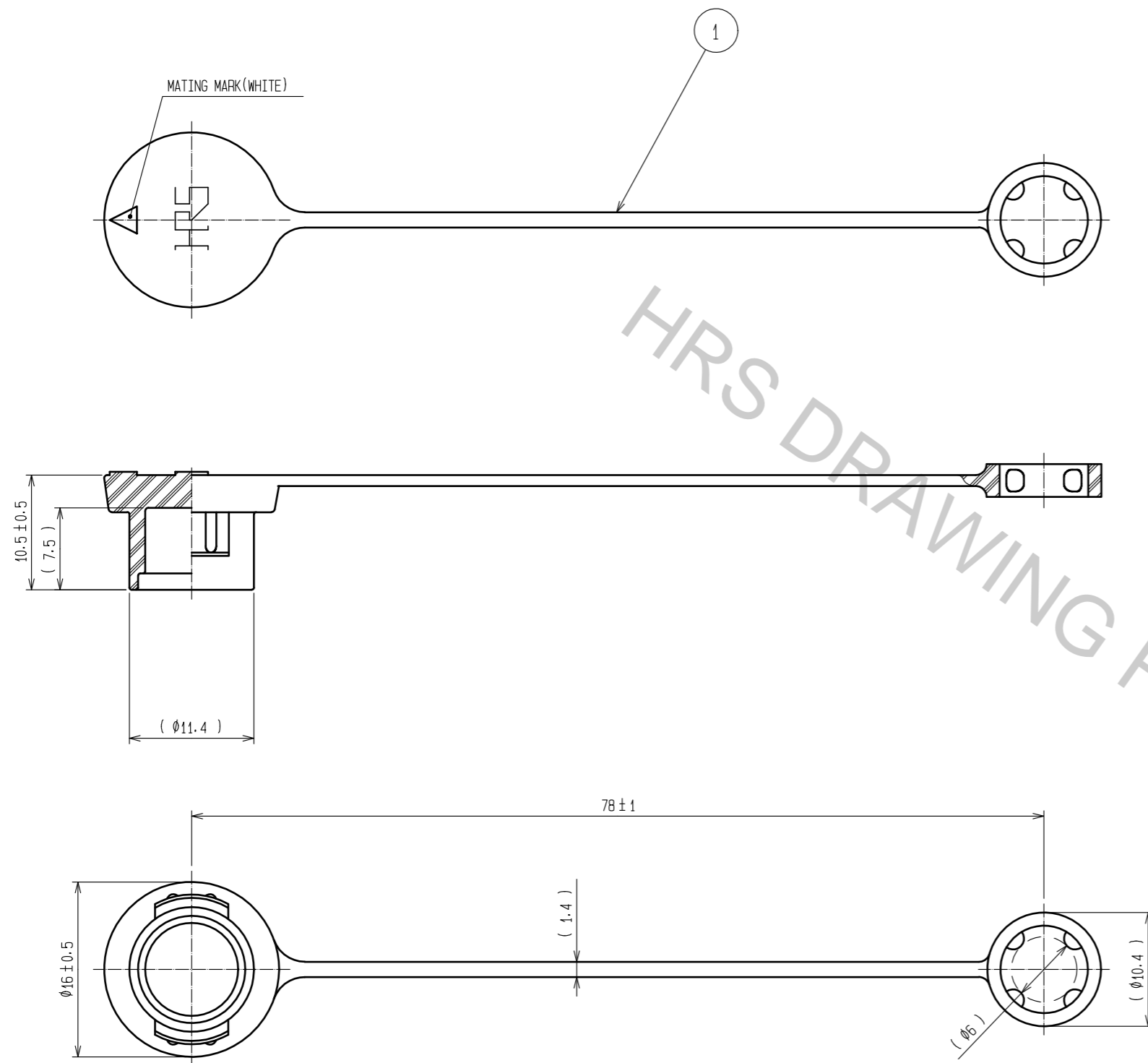


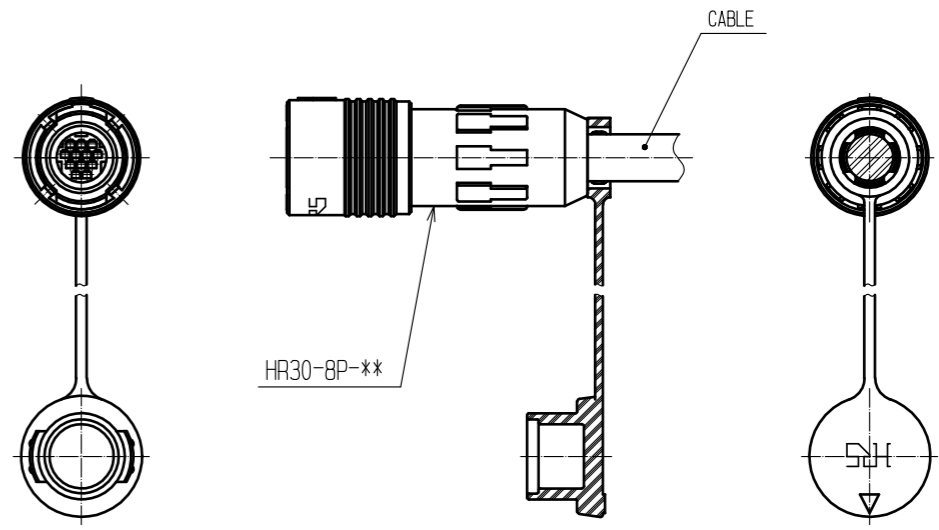
Sep.1.2018 Copyright 2018 HIROSE ELECTRIC CO., LTD. All Rights Reserved.
In case that the application demands a high level of reliability, such as automotive,
please contact a company representative for further information.



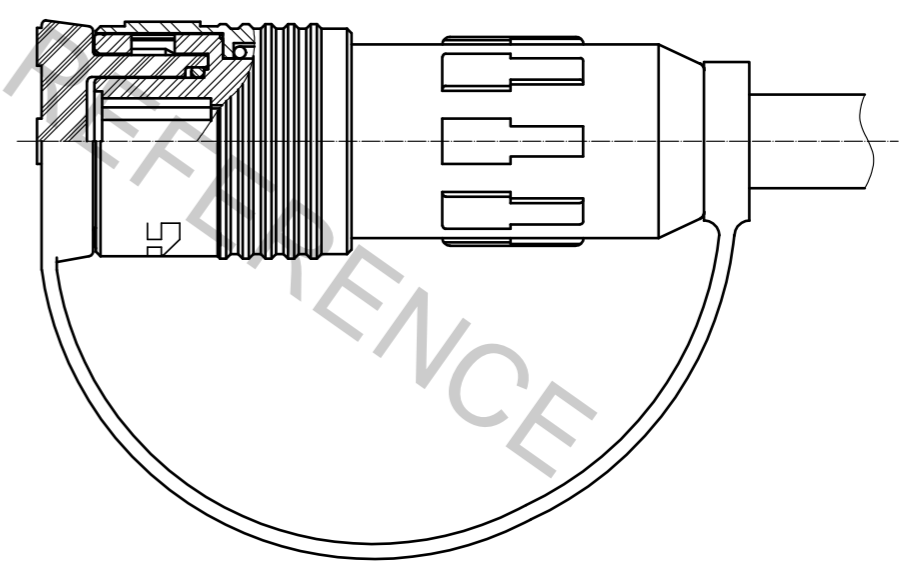
NOTES 1 THIS PART TO BE USED AS ASSEMBLED COMPONENT IN THE DIAGRAM AFTER ASSEMBLING.
2 THIS PRODUCT IS A CAP FOR HR30-8P-*(※).
IT IS APPLICABLE REGARDLESS OF GIVEN ALPHABETS OR NUMBERS SHOWN AT ※.

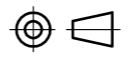
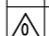

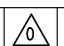
DIAGRAM AFTER ASSEMBLING

INSTALLATION VIEW(1:1)



MATING CONDITION VIEW



| | | | | | |
|---|---|------------------|--|--------------------------|---|
| 1 | CHLOROPRENE RUBBER | BLACK | | | |
| NO. | MATERIAL | FINISH . REMARKS | NO. | MATERIAL | FINISH . REMARKS |
| UNITS mm |  | SCALE 2 : 1 | COUNT  | DESCRIPTION OF REVISIONS | DESIGNED |
|  HIROSE ELECTRIC CO., LTD. | | APPROVED | HY. KOBAYASHI | 18. 02. 26 | DRAWING NO. |
| | | CHECKED | HY. KOBAYASHI | 18. 02. 26 | PART NO. |
| | | DESIGNED | DS. MATSUNE | 18. 02. 24 | CODE NO. |
| | | DRAWN | AI. NISHIYAMA | 18. 02. 22 | |
| | | | | | EDC-112684-31-00 |
| | | | | | HR30-8P-C(31) |
| | | | | | CL130-3003-5-31 |
| | | | | |  1/1 |