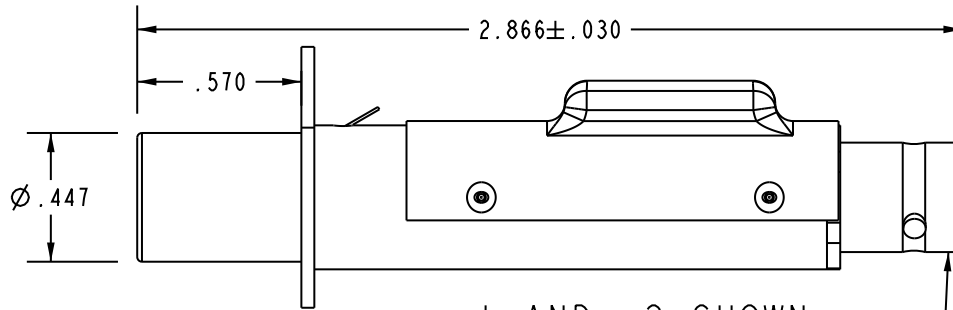


MODEL NO.	ACCEPTS PIN DIA.	RECEPTACLE TYPE
J13- \triangle 2	.070 (RCA)	BNC
J13W- \triangle 2	.090 (W.E.CO.)	
J13H- \triangle 2	.070 (RCA)	TNC
J13WH- \triangle 2	.090 (W.E.CO.)	

DATA CONTAINED IN THIS DOCUMENT IS PROPRIETARY TO EMERSON CONNECTIVITY SOLUTIONS AND SHALL NOT BE DISCLOSED, COPIED OR USED FOR PROCUREMENT OR MANUFACTURE WITHOUT EXPRESS WRITTEN PERMISSION

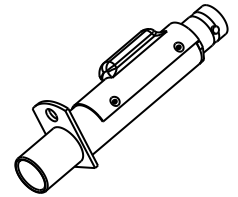
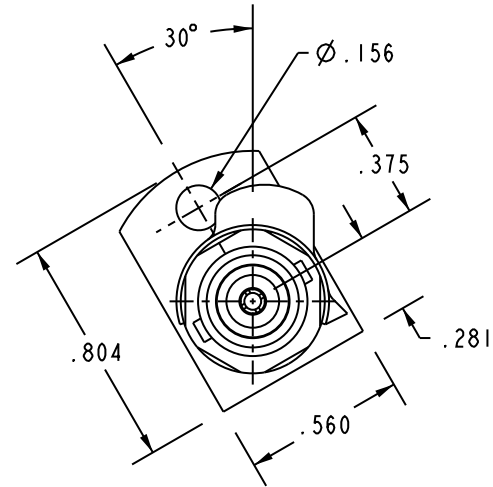
REVISIONS			
REV	DESCRIPTIONS	DATE	APPROVED
A	ECO 52227	3/24/10	C. MONAHAN



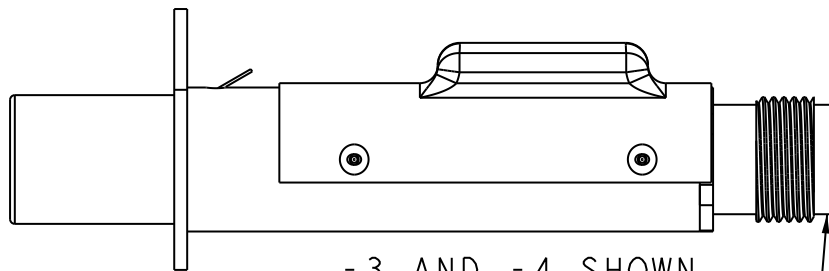
-1 AND -2 SHOWN

BNC RECEPTACLE

DIMENSIONS APPLY TO ALL DASH NUMBERS

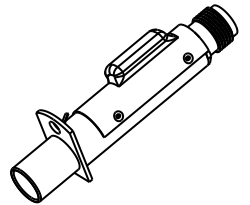
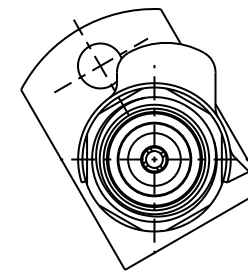


SCALE 1/2



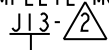
-3 AND -4 SHOWN

TNC RECEPTACLE



SCALE 1/2

4. EXAMPLE OF COMPLETE MODEL NUMBER:



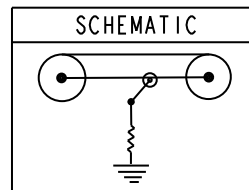
BASIC MODEL NUMBER(SEE TABLE)


3. 50 & 75 Ω SELF-TREMINATING COAXIAL PATCH JACK WITH BNC OR TNC RECEPTACLE

\triangle RESISTANCE VALUE IN Ω (1/2 W 1%)

1. TFS-1A (NICKEL)

NOTES: UNLESS OTHERWISE SPECIFIED.



INTERPRET DRAWING PER MIL-STD-100. DIMENSIONS ARE IN INCHES AND INCLUDE FINISH THICKNESS UNLESS OTHERWISE SPECIFIED.		TOL: UNLESS SPECIFIED. .XX ± .02 .XXX ± .010 ANGLE ± 1°		 cinch CONNECTIVITY SOLUTIONS a bell group		Cinch Connectivity Solutions 299 Johnson Ave. Ste. 100 Waseca, MN 56093 1-800-247-8256	
DRN C. WALLACE	5/10/10	MATERIAL:		TITLE: J13/J13W/J13H/J13WH			
CHK		FINISH:					
QUALITY							
MANUF		SIZE		CAGE CODE	DRAWING NO.	REV.	
APPROVED		A		14949	1-0124	X	
PROT FILE NO. 1-0124		DO NOT SCALE DWG		SCALE 1/1	DATE 10/19/67	SHEET 1 OF 2	

Mouser Electronics

Authorized Distributor

Click to View Pricing, Inventory, Delivery & Lifecycle Information:

[Cinch Connectivity Solutions:](#)

[J13-50](#)