

KSM Series

Side Actuated Detect Switches



Features/Benefits

- Low profile – 1,5 mm
- Momentary, normally closed contact
- Gold contacts
- RoHS compliant and compatible

Typical Applications

- Automotive
- Position sensing switch
- Edge card reset switch
- Smart card presence switch detector
- DSL and fiber optic networks

Specifications

FUNCTION: Momentary action

CONTACT TYPE: SPST Normally closed

Mechanical

TRAVEL TO BREAK:	KSM1131D LFG	0,35 ± 0,15 mm
	KSM6161 LFG	0,5 ± 0,20 mm
TOTAL TRAVEL:	KSM1131D LFG	1,25 ± 0,2 mm
	KSM6161 LFG	1,92 ± 0,2 mm

SWITCHING FORCE:

KSM1131D LFG	$0,15N \leq F_{ce} \leq 0,90 N$
KSM6161 LFG	$0,50N \leq F_{ce} \leq 0,90 N$

OPERATING LIFE:	KSM1131D LFG	50,000 cycles
	KSM6161 LFG	200,000 cycles

Packaging

Switches are delivered on continuous tape, in reels of 2,000 pieces (KSM1131D LFG) and 1250 pieces (KSM6161 LFG)

Electrical

	KSM1131D LFG	KSM6161 LFG
MAXIMUM POWER:	0.2 VA	1.0 VA
MAXIMUM VOLTAGE:	24 VDC	32 VDC
MINIMUM VOLTAGE:	20 mV	20 mV
MAXIMUM CURRENT DC:	50 mA	50 mA
MINIMUM CURRENT DC:	1 mA	
CONTACT RESISTANCE:	$\leq 300 m\Omega$	$\leq 900 m\Omega$
INSULATION RESISTANCE:	$\geq 10^9 \Omega$	$\geq 10^9$
DIELECTRIC STRENGTH:	$\geq 250 V_{rms}$	$\geq 250 V_{rms}$
BOUNCE TIME:	$\leq 10 ms$	$\leq 1,25 ms$

Environmental

OPERATING TEMPERATURE:	-40°C to +85°C
STORAGE TEMPERATURE:	-55°C to +85°C

Process

SOLDERING: Compatible with lead free reflow process

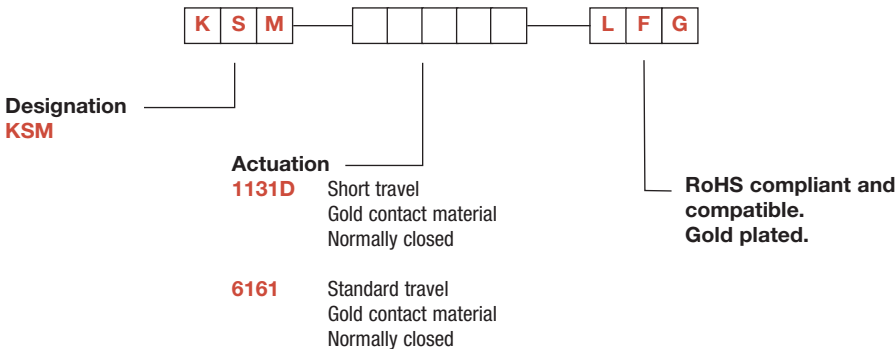
NOTE: Specifications listed above are for switches with standard options. For information on specific and custom switches, consult Customer Service Center.

Build-A-Switch

To order, simply select desired option from each category and place in the appropriate box. Available options are shown and described on page E-20. For additional options not shown in catalog, consult our Customer Service Center.



Detect



First Angle
Projection

Dimensions are shown: mm

Specifications and dimensions subject to change

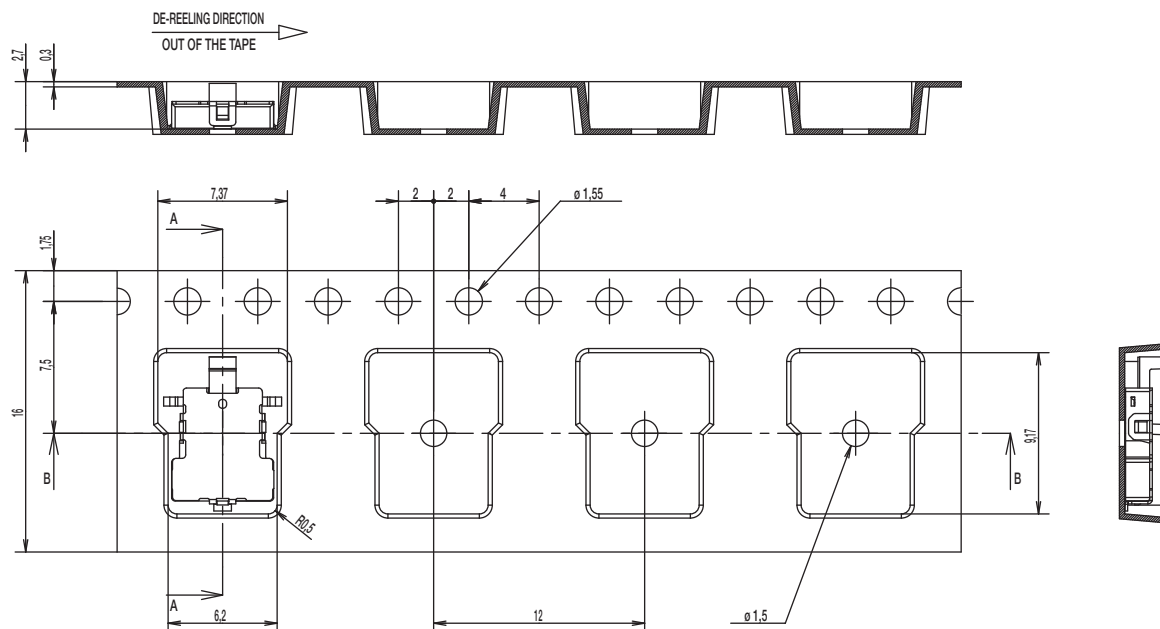


5 feb 15

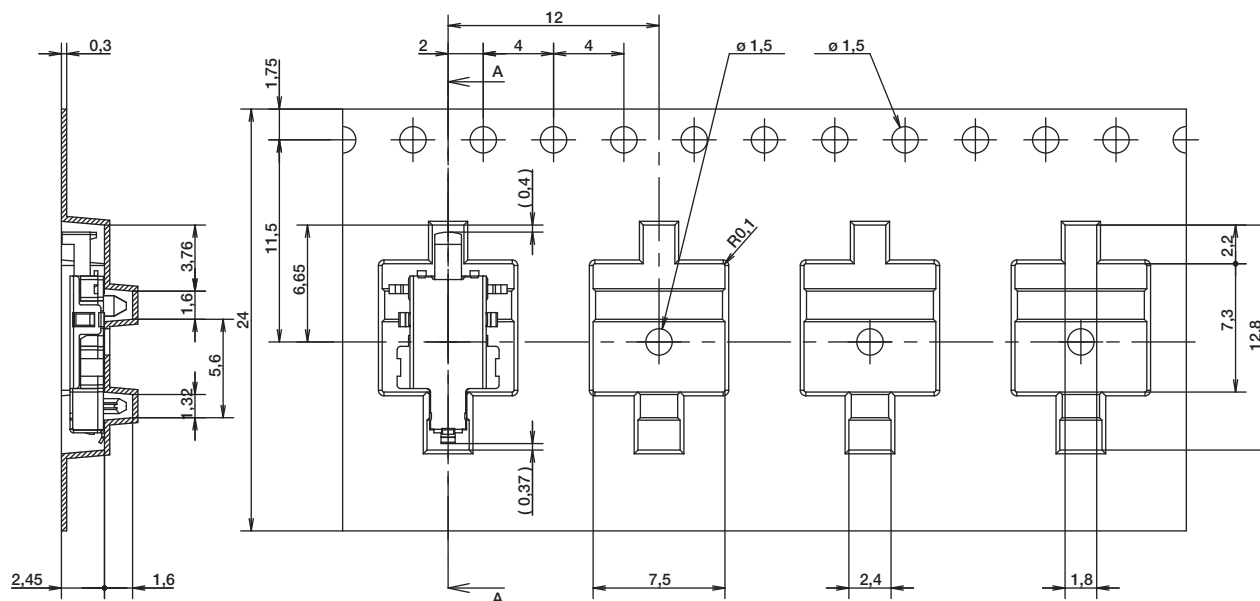
KSM Series Side Actuated Detect Switches

TAPE & REEL

KSM1131D LFG



KSM6161 LFG



E

Detect



First Angle
Projection

Dimensions are shown: mm
Specifications and dimensions subject to change