

FIGURE #1

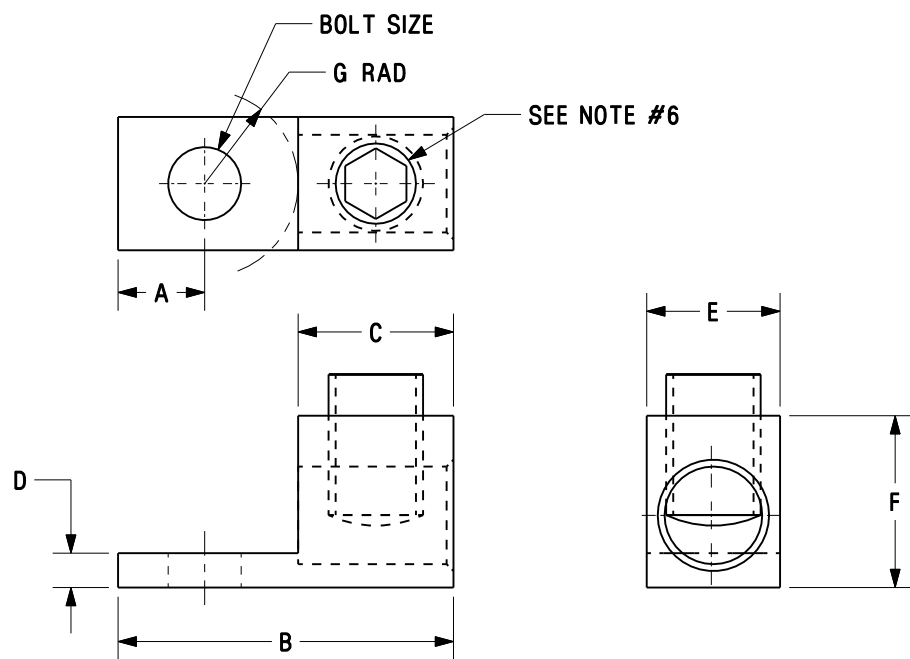


FIGURE #2

- NOTES:
- 1. U.L. LISTED PER 486B UP TO 600V. TEMPERATURE RATED 90° C
 - 2. C.S.A. CERTIFIED UP TO 600V.
 - 3. ALUMINUM PARTS AND SCREWS ARE TIN PLATED. STEEL SCREWS ARE ZINC PLATED
 - 4. TO BE USED WITH COPPER OR ALUMINUM STRANDED WIRE.
 - 5. MADE IN U.S.A.
 - 6. *S - DESIGNATES SLOTTED SCREW.
 - 7. PKG. QTY.: -Q=25
 - 8. THIS PART IS RoHS COMPLIANT.

ALUMINUM MECHANICAL CONNECTORS TYPE: LAMA

*PART WEIGHT INCLUDES SCREW AND BODY

CAT. NO.	FIGURE	WIRE RANGE COPPER/ALUMINUM	WIRE STRIP LENGTH IN. (mm)	BOLT SIZE IN.	DIM A IN.	DIM B IN.	DIM C IN.	DIM D IN.	DIM E IN.	DIM F IN.	DIM G IN.	INSTALLATION TORQUE in-lbs (N-m)	HEX KEY	SCREW MAT'L	PART WEIGHT lb [kg]
LAMA6-14-QY	1	6-14AWG	.38 (9.7)	1/4	.25	1.06	.38	.09	.38	.50	.43	45 (5.1)	*S	STEEL	.016 lb [.007 kg]
LAMA2-14-QY	1	2-14AWG	.47 (11.9)	1/4	.32	1.16	.47	.09	.50	.56	.37	12-14AWG-15 (1.7) 6-10AWG-40 (4.5) 2-4AWG-50 (5.6)	*S	STEEL OR AL	.020 lb [.009 kg]
LAMA1/0-14-QY	1	1/0-14AWG	.63 (16.0)	1/4	.44	1.47	.63	.19	.62	.81	.40	10-14AWG-35 (3.9) 8AWG-40 (4.5) 4-6AWG-45 (5.1) 1/0-3AWG-50 (5.6)	*S	AL	.036 lb [.016 kg]
LAMA2/0-14-QY	1	2/0-14AWG	.63 (16.0)	1/4	.44	1.47	.63	.19	.62	.81	.40	10-14AWG-35 (3.9) 8AWG-40 (4.5) 4-6AWG-45 (5.1) 2/0-3AWG-50 (5.6)	*S	AL	.036 lb [.016 kg]
LAMA250-56-QY	2	250MCM-6AWG	1.00 (25.4)	5/16	.44	2.00	1.00	.22	.90	1.06	.56	2-6AWG-275 (31.1) 250MCM-1AWG-375 (42.4)	3/8	AL	.092 lb [.042 kg]

06	1/07	JHNU	JHNU	ADDED PART WEIGHT COLUMN TO TABLE			PC00639		
--	-----	---	---	ADDED VIEWS OF PART WITH SLOTTED SCREWS ADDED NOTE TO REFERENCE NOTE 6. ADDED FIGURE COLUMN TO TABLE.			-----		
05	1/07	JHNU	JHNU				PC00629		
04	11/06	JHNU	JHNU	REVISED NOTES 1 AND 2: ADDED 600V AND TEMPERATURE RATED 90° C.			PC00611		
03	7/06	JHNU	LEM	REVISED PART NUMBER: LAMA2/0-14-QY WAS LAMA2/0-14-Q			PC00487		
02	6/06	JHNU	LEM	REVISED PART NUMBERS: LAMA6-14-QY WAS LAM6-14-Q LAMA2-14-QY WAS LAMA2-14-Q			PC00485		
01	3/06	JHNU	LEM	REVISED ROHS NOTE			PC00334		
00	2/06	JHNU	LEM	DRAWING RELEASED - ROHS COMPLIANT			PC00299		
REV	DATE	BY	CHK	DESCRIPTION			ECN #	CUST	GMBH

CAD FILENAME/LAYERS				C41566_06			
PANDUIT				CORP TINLEY PARK, ILLINOIS			
LAMA SERIES 6AWG THRU 250kcmil				ALUMINUM MECHANICAL LUGS			
UNLESS OTHERWISE SPECIFIED, DIMENSIONAL TOLERANCES ARE: (.X) ± --- (.XXX) ± --- (.XX) ± --- ANGLES ± ---				UNLESS OTHERWISE SPECIFIED, ALL DIMENSIONS ARE GIVEN IN INCHES, THIRD ANGLE PROJECTION			
DRAWN BY JHNU		MAT'L:		SCALE NONE			
DATE 2/06		SEE NOTES		DRAWING NO.		DWG B	
CHK'D				C41566		SIZE	