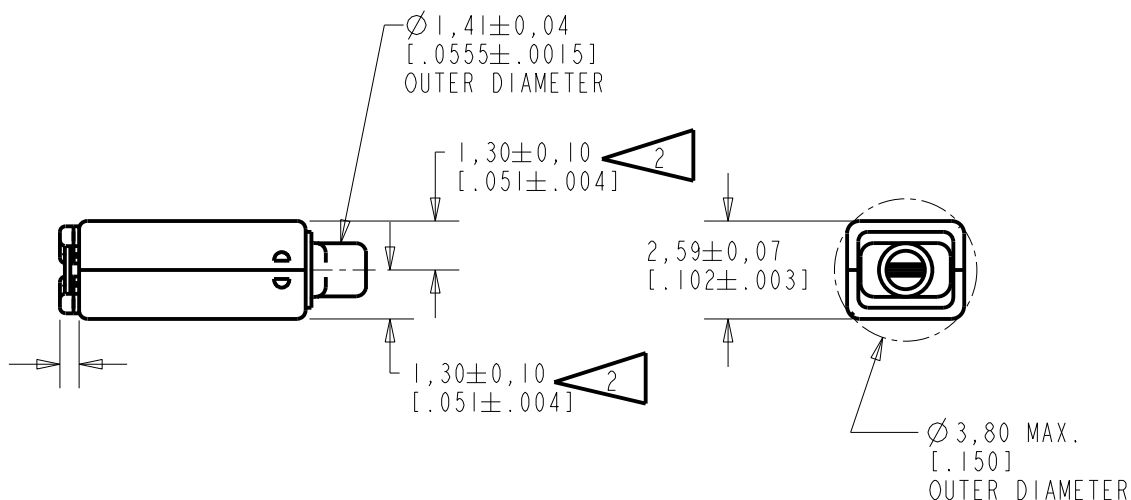
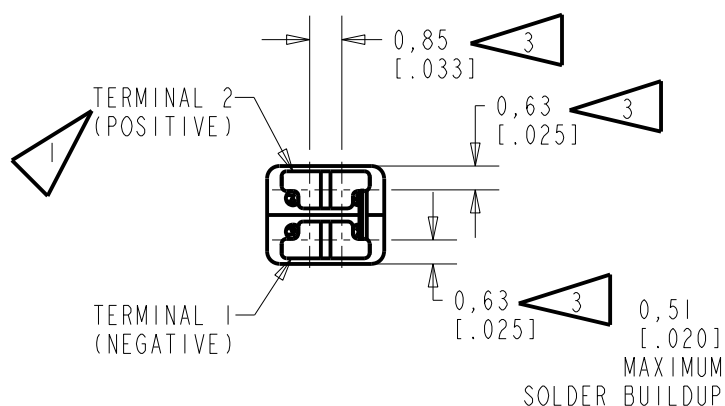
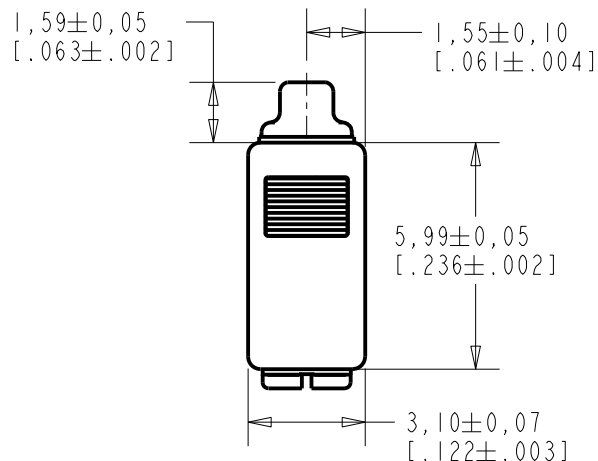


GD-31475-000

SHT 1.1



NOTES:

- 1 A POSITIVE GOING VOLTAGE AT TERMINAL 2, RELATIVE TO TERMINAL 1, CAUSES AN INCREASE IN PRESSURE AT THE SOUND OUTLET.
- 2 LOCATED FROM TWO SURFACES FOR CUSTOMER CONVENIENCE. ONLY APPLICABLE FROM ONE SURFACE, NOT TO BE USED TOGETHER.
- 3 DIMENSION TO APPROXIMATE CENTER OF TERMINAL PAD.



SCALE 2:1
0.16 GRAMS

DIMENSIONS IN MILLIMETERS [INCHES]

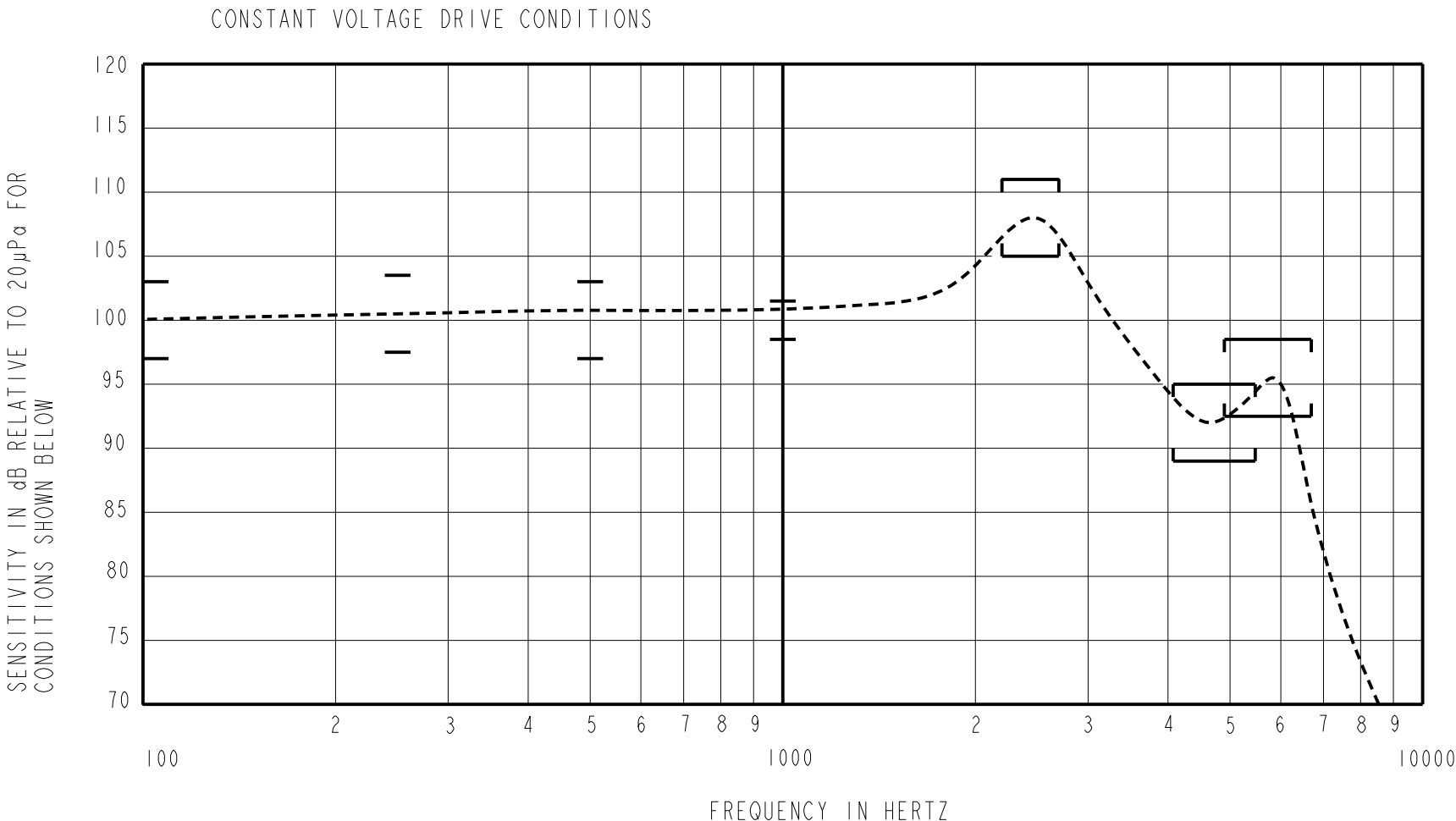
KNOWLES ELECTRONICS
ITASCA, ILLINOIS U.S.A.

Revision	C.O. #	Implementation Date	RELEASE LEVEL	REVISION
			Active	A
A	CI0113803	7-4-12		
SCALE: 5:1			DR. BY	DATE
DO NOT SCALE DRAWING			LSY	7-4-12
TITLE: RECEIVER OUTLINE DRAWING			CK. BY	DATE
			GJP	7-12-12
			APP. BY	DATE
			GJP	7-12-12

INTENDED FOR USE IN CIC, RIC, AND MINI-BTE APPLICATIONS. THIS IS A PAIR OF GE RECEIVERS WITH VERY LOW VIBRATION IN ALL DIRECTIONS. ONE GE RECEIVER IS REVERSE MAGNETIZED FOR MAGNETIC LEAKAGE CONSIDERATIONS.

NO DAMPING

CD-31475-000
SHEET 2.1



ACOUSTICAL

SENSITIVITY
DEVICE WILL PRODUCE THE SPL LISTED BELOW UNDER TEST CONDITIONS DESCRIBED IN TABLE 4. NOMINAL SENSITIVITY AT 1kHz IS dB RELATIVE TO 20µPa. ALL OTHER VALUES IN dB RELATIVE TO THE SENSITIVITY AT 1kHz.

LIMIT TYPE	FREQUENCY (Hz)	MINIMUM	NOMINAL	MAXIMUM
REL	100	-3.0	0.0	+3.0
REL	250	-2.5	+0.5	+3.5
REL	500	-3.0	0.0	+3.0
REF	1000	-1.5	100.0	+1.5
PEAK	2200 - 2700	+5.0	+8.0	+11.0
VALLEY	4075 - 5475	-11.0	-8.0	-5.0
PEAK	4900 - 6700	-7.5	-4.5	-1.5

TABLE 1

TOTAL HARMONIC DISTORTION
DEVICE WILL NOT EXCEED TOTAL HARMONIC DISTORTION LEVELS LISTED BELOW.

FREQUENCY (Hz)	AC DRIVE (Vrms)	DC BIAS (V)	LIMIT (%)
833	0.118	0	3
1250	0.118	0	3
833	0.331	0	8
1250	0.331	0	8

TABLE 2

MAXIMUM OUTPUT LEVEL (TYPICAL)

POWER (mW)	500 Hz SPL (dB)	REQUIRED VOLTAGE (Vrms)	Peak SPL (dB)	REQUIRED VOLTAGE (Vrms)
10	114.0	0.6	124.0	0.9
50	117.0	1.4	128.0	1.7

TABLE 3

TEST CONDITIONS

NOMINAL SOURCE VOLTAGE	0.118 Vrms, 0 mA DC BIAS
SOURCE IMPEDANCE	<1 Ohm
TUBING	10 mm [.394"] LONG X 1 mm [.039"] I.D. ("ITE")
COUPLER CAVITY	2 CM ³ , SIMULATED ANSI S3.7 TYPE HA-3 (IEC 60318-5)
MAXIMUM DRIVE VOLTAGE	1.09 Vrms

TABLE 4

ELECTRICAL

DC RESISTANCE @ 20°C	33.5 Ohms ± 10%
IMPEDANCE @ 500 Hz	35.6 Ohms ± 15%
IMPEDANCE @ 1 kHz	42.9 Ohms ± 15%
INDUCTANCE @ 500 Hz	22.2 mH TYPICAL
CAPACITANCE @ 10 MHz	6.27 pF TYPICAL

TABLE 5

ISOLATION: CASE WILL BE ELECTRICALLY ISOLATED FROM THE COIL CIRCUIT.

MECHANICAL

PORT LOCATION: 12S

SOLDER TYPE: SAC305

TEMPERATURE
OPERATING: SENSITIVITY WILL NOT VARY MORE THAN
+1/-3 dB AT 500 Hz FROM -17°C TO 63°C

STORAGE: -40°C TO 63°C

SHOCK RESISTANCE: 90% SURVIVAL RATE WITH THD @ 1/3
PEAK FREQUENCY LESS THAN 10%, THD @ 1/2 PEAK
FREQUENCY LESS THAN 20% AND LESS THAN 3dB CHANGE
IN SENSITIVITY AT 1kHz WHEN SUBJECTED TO 15,000 G.

KNOWLES ELECTRONICS
ITASCA, ILLINOIS U.S.A.

Revision	C.O. #	Implementation Date	RELEASE LEVEL		REVISION
			Active		A
A	C10113803	7-4-12			
WHEN TEST LIMITS ARE USED TO ESTABLISH INCOMING INSPECTION ACCEPTANCE/REJECTION CRITERIA, CORRELATION OF TEST EQUIPMENT WITH KNOWLES IS ALSO REQUIRED FOR ELIMINATION OF EQUIPMENT AND TEST METHOD VARIATION				DR. BY	DATE
				LSY	7-4-12
				CK. BY	DATE
				GJP	7-12-12
TITLE: RECEIVER		CD-31475-000		APP. BY	DATE
				GJP	7-12-12
				SHT 2.1	
PERFORMANCE SPECIFICATION					

Mouser Electronics

Authorized Distributor

Click to View Pricing, Inventory, Delivery & Lifecycle Information:

Knowles:

[gd-31475-000](#)