

4

3

2

1

THIS DRAWING IS UNPUBLISHED.

RELEASED FOR PUBLICATION

2000

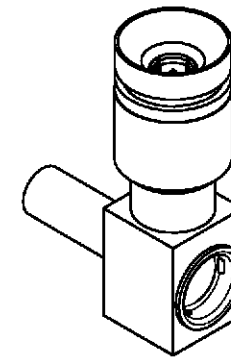
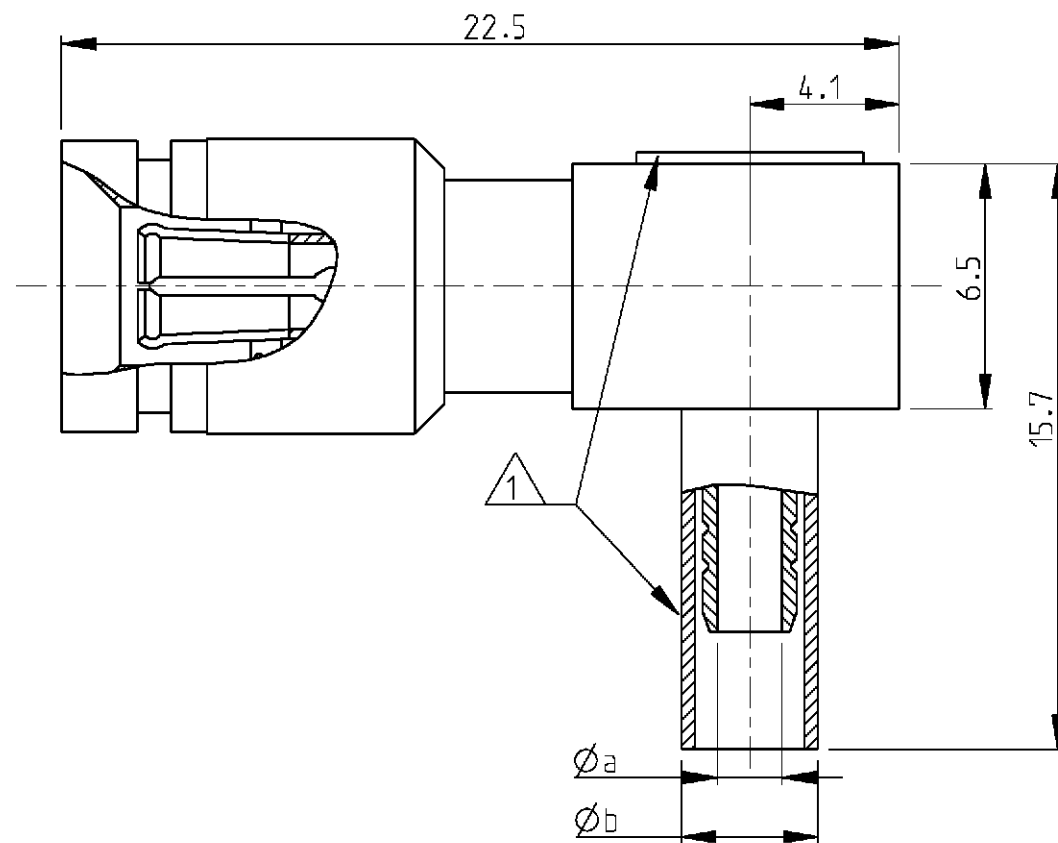
© COPYRIGHT 2000

BY TYCO ELECTRONICS CORPORATION. ALL RIGHTS RESERVED.

LOC
GWDIST
-

REVISIONS

P	LTR	DESCRIPTION	DATE	DWN	APVD
	A	-	05APR2001	CM	KM
	A1	REVISE PER ECO-17-007972	12JAN2017	LN	RS



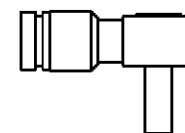
2:1

2. Mating face according to DIN 47297 and CECC 22230

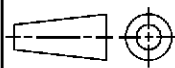
1 Supplied as loose part

V23614-B263-P76	9-1393670-2	02Y(ST)CY 0.45/2.0	2.15	5.2	Dielectric	PTFE	
					Outer Con.	Cu Be	1µm Au min in contact area
					Center Con.	Brass	1µm Au min in contact area
V23614-B202-P25	9-1393670-1	ST 214	3.8	7.93	Dielectric	PTFE	
					Outer Con.	Cu Be	1µm Au min in contact area
					Center Con.	Brass	1µm Au min in contact area
V23614-A263-P76	7-1393670-0	02Y(ST)CY 0.45/2.0	2.15	5.2	Dielectric	PTFE	
					Outer Con.	Cu Be	1µm Au min in contact area
					Center Con.	Brass	1µm Au min in contact area
V23614-A263-P34A	5-1419149-0	Pirelli s353/164	2.35	6.4	Dielectric	PTFE	
					Outer Con.	Cu Be	1µm Au min in contact area
					Center Con.	Brass	1µm Au min in contact area
V23600-A263-P71	2-1393670-6	RG179 B/U RG316/U	1.7	3.6	Dielectric	PTFE	
					Outer Con.	Cu Be	1µm Au min in contact area
					Center Con.	Brass	1µm Au min in contact area
Old Nr	Tyco Nr	Cable type	Dim a	Dim b	Description	Material	Plating

OBSOLETE



1:1

THIS DRAWING IS A CONTROLLED DOCUMENT FOR TYCO ELECTRONICS CORPORATION IT IS SUBJECT TO CHANGE AND THE CONTROLLING ENGINEERING ORGANIZATION SHOULD BE CONTACTED FOR THE LATEST REVISION.		DWN MOROB	2APR2001	tyco Electronics Tyco Electronics Oostkamp - Belgium	
		CHK MATTHEEUS	3APR2001		
		APVD BOZZER	5APR2001		
DIMENSIONS: -		TOLERANCES UNLESS OTHERWISE SPECIFIED:		NAME CABLE ANGLE PLUG 1.0/2.3 50/75 Ohm -	
		0 PLC ± 1 PLC ±0.5 2 PLC ±0.13 3 PLC ±0.013 4 PLC ±0.0001 ANGLES ±		SIZE A3	
MATERIAL -		FINISH -		CAGE CODE 00779	
				DRAWING NO C-2-1393670-6	
				RESTRICTED TO -	
				SCALE 10/1	
				SHEET 1 OF 1	
				REV A1	

Mouser Electronics

Authorized Distributor

Click to View Pricing, Inventory, Delivery & Lifecycle Information:

[TE Connectivity:](#)

[2-1393670-6](#)