

**THIS PRODUCT MANUFACTURED
WITH LEAD-FREE PROCESSING**

**DESIGNED & DIMENSIONED
IN MILLIMETERS[INCHES]**

MMCX-J-P-X-ST-SM1-X-XX

GENDER
-J: JACK

TYPE
-P: PCB

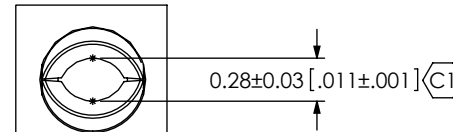
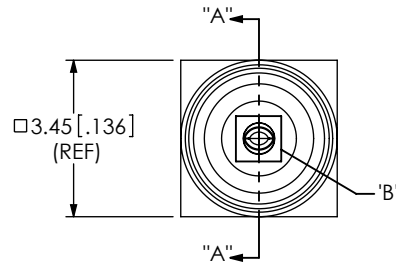
PLATING SPECIFICATION
-H: 30μ" GOLD CENTER CONTACT,
3μ" GOLD OUTER CONTACT
(SEE TABLE 1)

OPTION 2
-TR:
TAPE & REEL

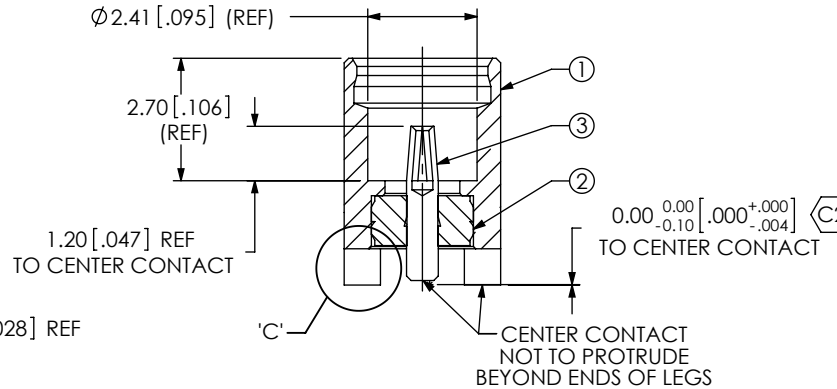
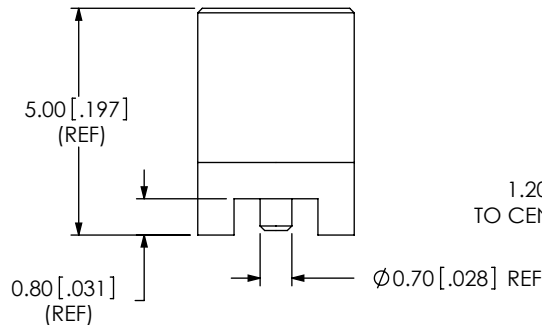
OPTION 1
-K:
KAPTON
USE K-500-300
(SEE SHEET 2)

TERMINATION
-SM1: SURFACE MOUNT

ORIENTATION
-ST: STRAIGHT



DETAIL 'B'
SCALE 20 : 1



SECTION "A"-A"

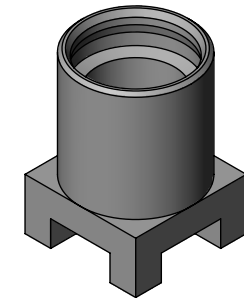
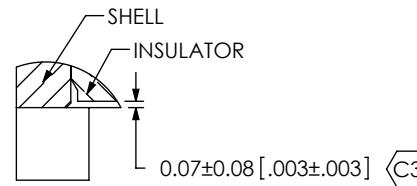
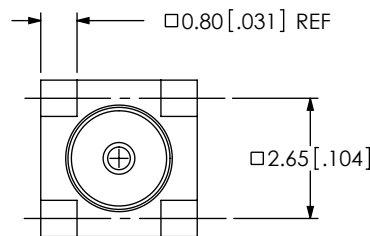


FIG 1
MMCX-J-P-X-ST-SM1 SHOWN



DETAIL 'C'
SCALE 12 : 1

RECOMMENDED PCB LAYOUT

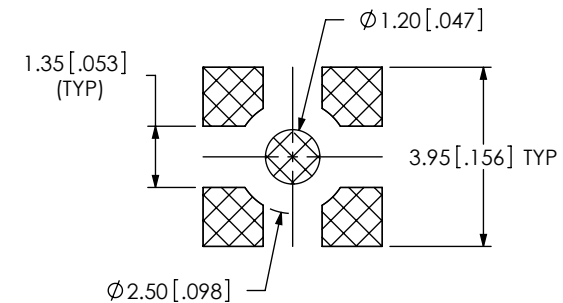


TABLE 1

ITEM	COMPONENT	-H
1	SHELL	MMCX-J-P-F-ST-SM1-SHL
2	INSULATOR	MMCX-J-P-ST-SM1-INS
3	SOCKET	MMCX-J-P-H-ST-SM1-SKT

NOTES:

1. (C) REPRESENTS A CRITICAL DIMENSION.
2. PUSHOUT FORCE FOR INSULATOR: 22.24 N [5 LB] MIN.
3. PUSHOUT FORCE FOR CENTER CONTACT: 5.34 N [1.2 LB] MIN. (MATING DIRECTION ONLY)
4. SEE CO-HD-WI-3040M RF PACKAGING FOR PACKAGING INSTRUCTIONS, USE SAMTEC TRAY TY-SMA001-1 AND TY-SMA001-2. QUANTITIES LESS THAN A FULL TRAY WILL NOT BE PACKAGED IN TRAYS.
6. NOTE DELETED.
7. NOTE DELETED.

UNLESS OTHERWISE SPECIFIED,
DIMENSIONS ARE IN
MILLIMETERS [INCHES].
TOLERANCES ARE:
DECIMALS ANGLES
.X: ±0.3 [0.01] 5°
.XX: ±0.13 [0.005]
.XXX: ±0.051 [0.0020]

PROPRIETARY NOTE

THIS DOCUMENT CONTAINS INFORMATION
CONFIDENTIAL AND PROPRIETARY TO
SAMTEC, INC. AND SHALL NOT BE REPRODUCED
OR TRANSFERRED TO OTHER DOCUMENTS OR
DISCLOSED TO OTHERS OR USED FOR ANY
PURPOSE OTHER THAN THAT WHICH IT WAS
OBTAINED WITHOUT THE EXPRESSED WRITTEN
CONSENT OF SAMTEC, INC.

MATERIAL: DO NOT SCALE DRAWING

SHELL, RING: BRASS
SOCKET: COPPER ALLOY
DIELECTRIC: PTFE

SHEET SCALE: 6:1

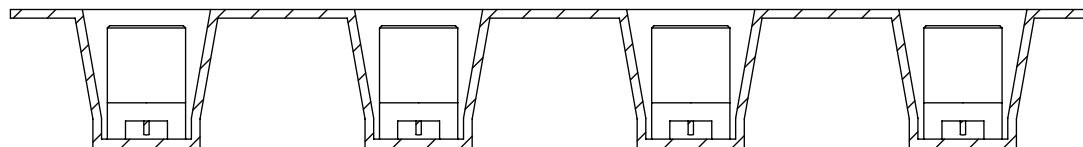
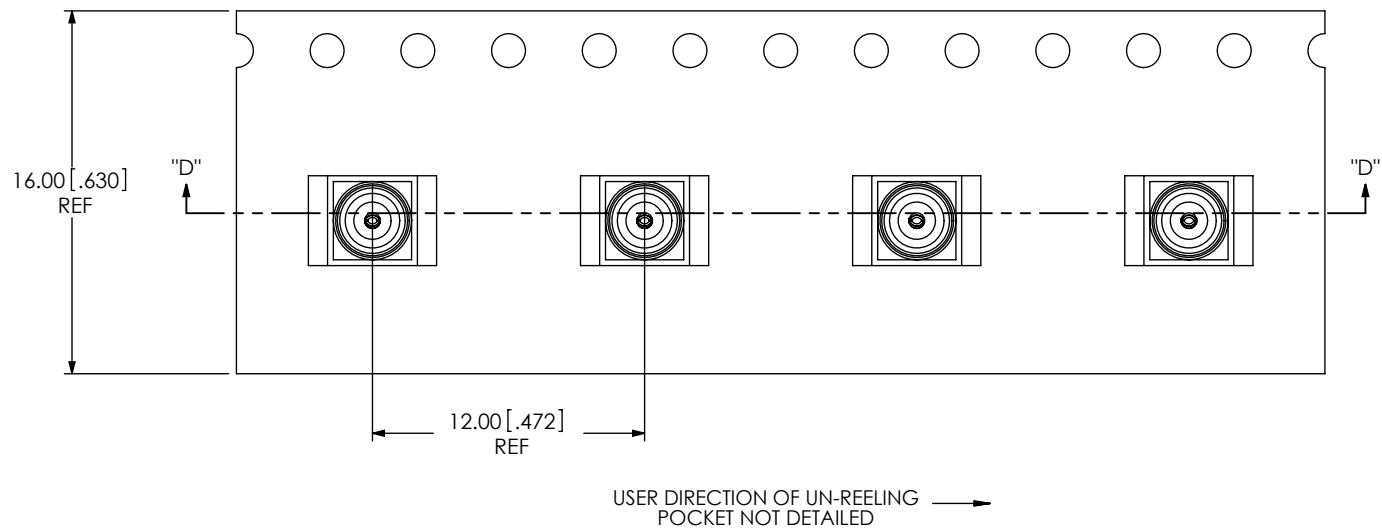
samtec

520 PARK EAST BLVD, NEW ALBANY, IN 47150
PHONE: 812-944-6733 FAX: 812-948-5047
e-Mail: info@SAMTEC.com code: 55322

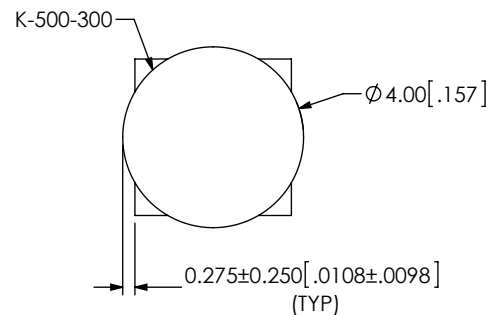
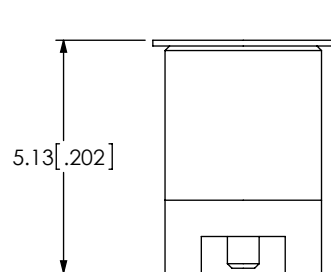
DESCRIPTION:
MMCX STRAIGHT, SMT JACK- 50 OHM

DWG. NO.
MMCX-J-P-X-ST-SM1-X-XX

BY: R MUSSER 11/30/2007 SHEET 1 OF 2



PACKAGING VIEW
SECTION "D"-"D"
SCALE 3 : 1



-K OPTION

PROPRIETARY NOTE
THIS DOCUMENT CONTAINS INFORMATION
CONFIDENTIAL AND PROPRIETARY TO
SAMTEC, INC. AND SHALL NOT BE REPRODUCED
OR TRANSFERRED TO OTHER DOCUMENTS OR
DISCLOSED TO OTHERS OR USED FOR ANY
PURPOSE OTHER THAN THAT WHICH IT WAS
OBTAINED WITHOUT THE EXPRESSED WRITTEN
CONSENT OF SAMTEC, INC.

DO NOT SCALE DRAWING

SHEET SCALE: 6:1

samtec

520 PARK EAST BLVD, NEW ALBANY, IN 47150
PHONE: 812-944-6733 FAX: 812-948-5047
e-Mail: info@SAMTEC.com code: 55322

DESCRIPTION:
MMCX STRAIGHT, SMT JACK- 50 OHM

DWG. NO.
MMCX-J-P-X-ST-SM1-X-XX

BY: R MUSSER 11/30/2007 SHEET 2 OF 2