

Customer Information Sheet

DRAWING No.: M80-462XXXX

SHEET 2 OF 2

IF IN DOUBT - ASK

(C)

NOT TO SCALE

THIRD ANGLE PROJECTION

ALL DIMENSIONS IN mm

SPECIFICATIONS:**MATERIAL:**MOULDING = GLASS-FILLED PPS,
UL94V-0, BLACK

CONTACT CLIP = BERYLLIUM COPPER

CONTACT SHELL = BRASS

JACKSCREW, NUT = STAINLESS STEEL

FINISH:05 = 0.3 μ GOLD CLIP,0.25-0.3 μ GOLD SHELL42 = 0.3 μ GOLD CLIP,3.5-5.0 μ 100% TIN OVER NICKEL**ELECTRICAL:**

CURRENT RATING AT 25°C = 3.0A MAX

CURRENT RATING AT 85°C = 2.2A MAX

WORKING VOLTAGE = 120V AC/DC

VOLTAGE PROOF = 360V AC/DC

CONTACT RESISTANCE = 25 m Ω MAXINSULATION RESISTANCE = 100 M Ω MIN**MECHANICAL:**

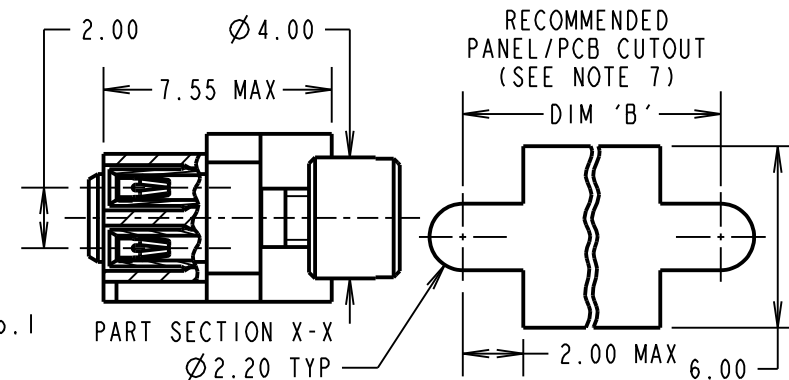
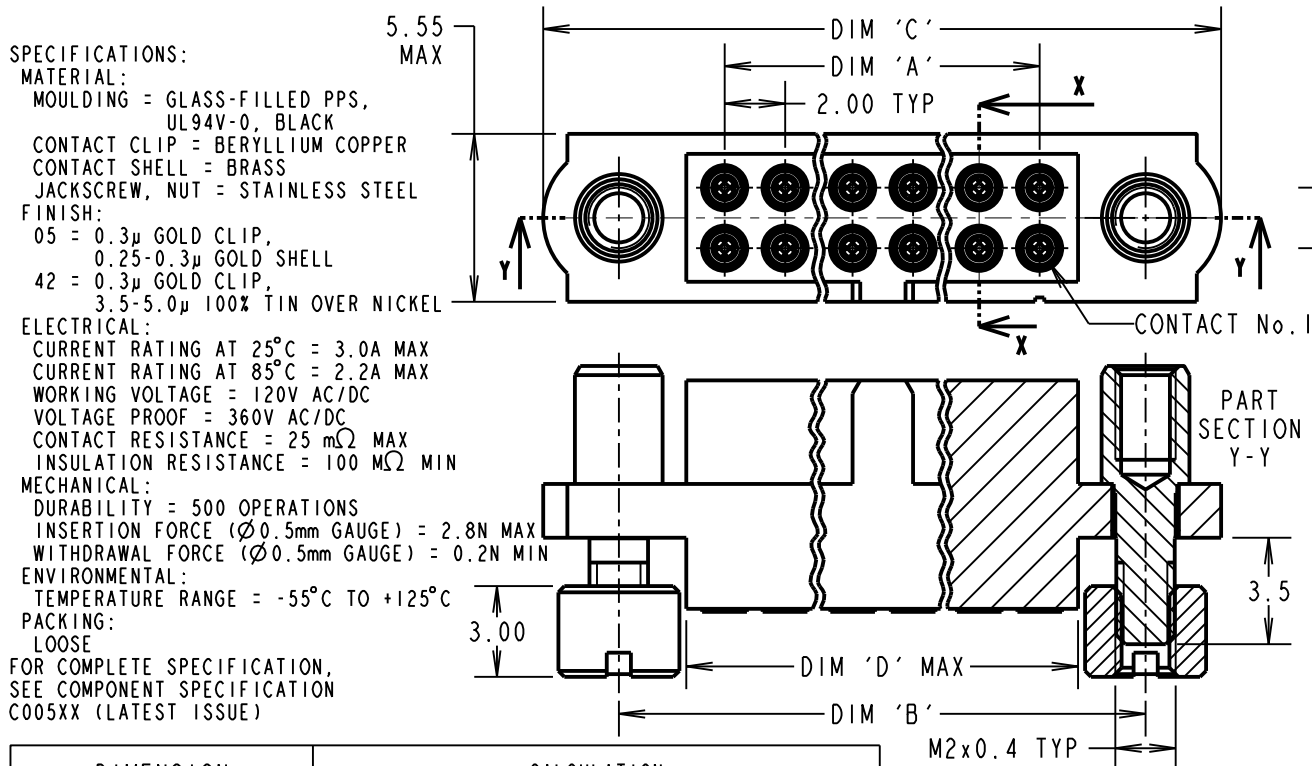
DURABILITY = 500 OPERATIONS

INSERTION FORCE (\varnothing 0.5mm GAUGE) = 2.8N MAXWITHDRAWAL FORCE (\varnothing 0.5mm GAUGE) = 0.2N MIN**ENVIRONMENTAL:**

TEMPERATURE RANGE = -55°C TO +125°C

PACKING:

LOOSE

FOR COMPLETE SPECIFICATION,
SEE COMPONENT SPECIFICATION
C005XX (LATEST ISSUE)**NOTES:**

- CONNECTORS ARE SUPPLIED WITH CONTACTS LOOSE.
- FOR EXTRA CONTACTS, USE PART NUMBER M80-0110005 FOR M80-462XX05 AND M80-0110001 FOR M80-462XX42.
- RECOMMENDED WIRE TYPE = BS 3G 210 TYPE A, PTFE INSULATED 22 AWG. MAX INSULATION DIAMETER = \varnothing 1.10mm, STRIP WIRE BY 2.00mm.
- RECOMMENDED HAND CRIMP TOOL = M22520/2-01 WITH POSITIONER T5747. REFER TO TOOLING INSTRUCTION SHEET IS-01 FOR COMPLETE CRIMPING INSTRUCTIONS.
- CONTACT INSERTION AND EXTRACTION TOOL = Z80-280. REFER TO TOOLING INSTRUCTION SHEET IS-25 FOR ASSEMBLY INSTRUCTIONS.
- RECOMMENDED PANEL/PCB THICKNESS = 1.3-1.6mm.

DIMENSION**CALCULATION**

DIM 'A'	TOTAL No. OF CONTACTS - 2
DIM 'B'	TOTAL No. OF CONTACTS + 5
DIM 'C'	TOTAL No. OF CONTACTS + 10
DIM 'D'	TOTAL No. OF CONTACTS + 0.64

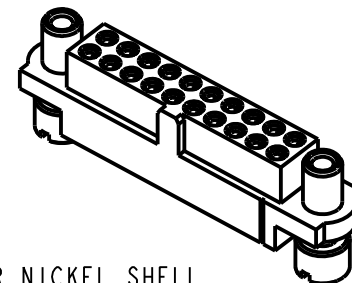
EXAMPLE: CONNECTOR WITH 20 CONTACTS, GOLD CLIP
AND 100% TIN OVER NICKEL SHELL, M80-4622042DIM 'A' = 18.00mm, DIM 'B' = 25.00mm,
DIM 'C' = 30.00mm, DIM 'D' = 20.64mm**ORDER CODE:****M80-462XXXX**

TOTAL No. OF CONTACTS

04 - 50
(EVEN NUMBERS ONLY)**FINISH CODE**

05 - GOLD CLIP, GOLD SHELL

42 - GOLD CLIP, 100% TIN OVER NICKEL SHELL



SM	3	28.10.11	11520
NAME	ISS.	DATE	C/NOTE
APPROVED: S. MCCULLAGH			
CHECKED: M. G. PLESTED			
DRAWN: B. M. KENT			
CUSTOMER REF.:			
ASSEMBLY DRG:			

HARWINwww.harwin.com
technical@harwin.comTHIS DRAWING AND ANY
INFORMATION OR DESCRIPTIVE
MATTER SET OUT HEREON ARE
CONFIDENTIAL AND COPYRIGHT
PROPERTY OF THE HARWIN
GROUP AND MUST NOT BE
DISCLOSED, LOANED, COPIED
OR USED FOR MANUFACTURING,
TENDERING OR FOR ANY
OTHER PURPOSE WITHOUT
THEIR WRITTEN PERMISSION.**TOLERANCES**X. = \pm 1mm
X.X = \pm 0.25mm
X.XX = \pm 0.10mm
X.XXX = \pm 0.01mmANGLES = \pm 5°

UNLESS STATED

MATERIAL:

SEE ABOVE

FINISH:

SEE ABOVE

S/AREA:mm²**TITLE:**DATAMATE J-TEK
FEMALE DIL LARGE BORE CRIMP WITH
'REVERSE FIX' JACKSCREW AND
3.5mm BOARD/PANEL MOUNT**DRAWING NUMBER:****M80-462XXXX**SHT
2
OF 2

Mouser Electronics

Authorized Distributor

Click to View Pricing, Inventory, Delivery & Lifecycle Information:

Harwin:

[M80-4621442](#) [M80-4625042](#) [M80-4623442](#) [M80-4624242](#) [M80-4622042](#) [M80-4620642](#) [M80-4621042](#) [M80-4622642](#)