

# Customer Information Sheet

DRAWING No.: M80-770XXXX

SHEET 2 OF 2

IF IN DOUBT - ASK

(C)

NOT TO SCALE

THIRD ANGLE PROJECTION

ALL DIMENSIONS IN mm

ORDER CODE:

**M80-770XXXX**

TOTAL No. OF WAYS

04, 06, 08, 10, 12, 14, 16,  
18, 20, 26, 34, 44

FINISH:

01 = TIN/LEAD SHELL, GOLD CLIP  
42 = 100% TIN SHELL, GOLD CLIP  
45 = GOLD SHELL, GOLD CLIP

SPECIFICATIONS:

MATERIAL:

MOULDING = POLYAMIDE 46 UL94V-0, BLACK  
CONTACTS = BERYLLIUM COPPER

FINISH:

CONTACTS:

01 = 0.30µm GOLD CLIP, 4.0µm TIN/LEAD SHELL  
42 = 0.30µm GOLD CLIP, 4.0µm 100% TIN SHELL  
45 = 0.30µm GOLD CLIP, 0.28µm GOLD SHELL

ELECTRICAL:

CURRENT RATING (25°C) = 3.0A MAX.

CURRENT RATING (85°C) = 2.2A MAX.

WORKING VOLTAGE = 120V AC/DC

VOLTAGE PROOF = 360V AC/DC

CONTACT RESISTANCE:

INITIAL = 20 mΩ MAX.

AFTER CONDITIONING = 25 mΩ MAX.

INSULATION RESISTANCE:

INITIAL = 1000 MΩ MIN.

AFTER CONDITIONING = 100 MΩ MIN.

MECHANICAL:

DURABILITY = 500 OPERATIONS

ENVIRONMENTAL:

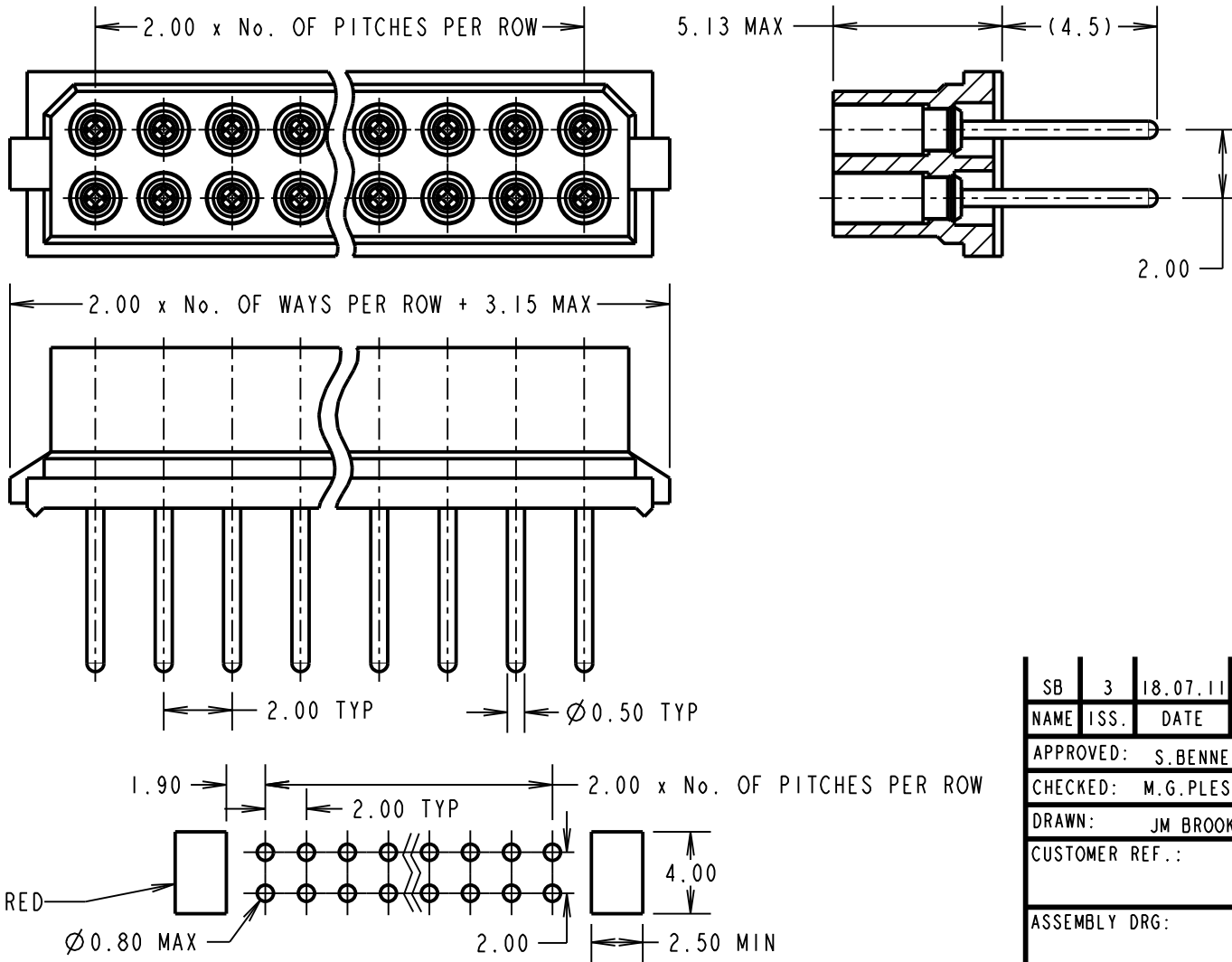
TEMPERATURE RANGE = -55°C TO +125°C

PACKING:

TUBE

FOR COMPLETE SPECIFICATION, SEE COMPONENT SPECIFICATION C005XX (LATEST ISSUE)

(OPTIONAL) HOLES REQUIRED FOR USE WITH LATCHED MALE CONNECTORS



SB	3	18.07.11	11378
NAME	ISS.	DATE	C/NOTE
APPROVED:		S. BENNETT	
CHECKED:		M.G. PLESTED	
DRAWN:		JM BROOKES	
CUSTOMER REF.:			
ASSEMBLY DRG.:			

**HARWIN**

HARWIN USA  
TEL: 603 893 5376  
FAX: 603 893 5396  
mis@harwin.com

HARWIN Europe (UK)  
TEL: 023 9231 4545  
FAX: 023 9231 4590  
mis@harwin.co.uk

HARWIN Asia  
TEL: +65 6 779 4909  
FAX: +65 6 779 3868  
mis@harwin.com.sg

THIS DRAWING AND ANY INFORMATION OR DESCRIPTIVE MATTER SET OUT HEREON ARE CONFIDENTIAL AND COPYRIGHT PROPERTY OF THE HARWIN GROUP AND MUST NOT BE DISCLOSED, LOANED, COPIED OR USED FOR MANUFACTURING, TENDERING OR FOR ANY OTHER PURPOSE WITHOUT THEIR WRITTEN PERMISSION.

TOLERANCES

X. = ±1mm  
X.X = ±0.25mm  
X.XX = ±0.10mm  
X.XXX = ±0.01mm

ANGLES = ±5°

UNLESS STATED

MATERIAL:

SEE ABOVE

FINISH: SEE ABOVE

S/AREA:

mm<sup>2</sup>

TITLE:

DATAMATE  
DIL VERTICAL PC TAIL  
SOCKET ASSEMBLY

DRAWING NUMBER:

**M80-770XXXX**

SHT  
2  
OF  
2

# Mouser Electronics

Authorized Distributor

Click to View Pricing, Inventory, Delivery & Lifecycle Information:

[Harwin:](#)

[M80-7700445](#) [M80-7700645](#) [M80-7700842](#) [M80-7700845](#) [M80-7701042](#) [M80-7701045](#) [M80-7701242](#) [M80-7701245](#) [M80-7701442](#) [M80-7701445](#) [M80-7701642](#) [M80-7701645](#) [M80-7701842](#) [M80-7701845](#) [M80-7702042](#)  
[M80-7702045](#) [M80-7702642](#) [M80-7702645](#) [M80-7704442](#) [M80-7704445](#)