



Features

- 2" x 3.5" x 1.3" Package, Ideal for 1U Applications
- 10-year Life design with Premium E-Caps
- 65Watts convection cooled
- Class I & II Input models
- Class B Conducted and Radiated EMI performance
- BF Isolation Type Rated
- Designed to meet new IEC 60601-1-2 4th Edition EMC requirements
- Approved to AAMI ES/CSA C22.2 /EN/IEC60601-1 3rd Edition
- 2 x MOPP Isolation
- Internal Temperature Monitor, DC - OK Signal, LED
- 3 Year Warranty



Description

A superior performance 65 Watt AC to DC power supply designed for next generation medical applications. Feature rich and highly efficient, MB65 product family can easily fit in a 1U chassis and provides 65 Watts of convection power. Input & output and internal temperature monitoring/alarms are features of the MB65 family. All models are CE marked to low voltage directive and approved to AAMI ES/CSA C22.2 No./EN/IEC60601-1, 3rd edition. The design takes into consideration the pending international release of the new IEC 60601-1-2, 4th Edition EMC requirements. With low leakage current performance, the power supplies are BF rated.

Model Selection

Model Number ³	Volts	Output Current Convection	Efficiency ⁴	Ripple & Noise ¹	Total Regulation	OVP Threshold
MB65S12	12V	5.4A	88%	0.5%	± 1%	17.3 ± 2.4V
MB65S15	15V	4.3A	88%	0.5%	± 1%	20.1 ± 2.4V
MB65S18 ²	18V	3.6A	89%	0.5%	± 1%	21.7 ± 2.5V
MB65S24	24V	2.7A	89%	0.5%	± 1%	29.3 ± 3.5V
MB65S28 ²	28V	2.3A	89%	0.5%	± 1%	35.2 ± 3.5V
MB65S32 ²	32V	2.0A	89%	0.5%	± 1%	41.5 ± 4.5V
MB65S48	48V	1.35A	90%	0.5%	± 1%	55.5 ± 4.5V

Notes:

1) Measured at 25C using 6 inch twisted pair wires with noise probe directly across output terminals, and load terminated with 0.1µF ceramic and 10µF low ESR capacitors.

2) Will be released in second phase of development

3) Part number suffix to include "K" for Class-1 AC input, or "C" suffix for Class-2 AC Input

4) Efficiency, Typical at 115/230Vac, 25°C. See Charts below for load conditions.

General Specifications

AC Input	85-264Vac, single phase. (Safety Approved to 90-264Vac).	Turn On Time	<2 Seconds at 110Vac.
Input Current	1.5A at 110Vac, 1A at 240Vac	Rise Time	<30mS, 48V model: < 40mS
Inrush Current	40Arms Maximum within a half line cycle, cold start at 25C. See application note.	Hold-up Time	20mS min. from loss of AC input at 110 Vac, full load, 25°C.
I ² T Characteristic	See Table below.	Over Load Protection (OCP)	115% - 200% of rated output current value. Hiccup Mode, Auto-recovery
Turn-On Input Voltage	>75Vac \pm 8Vac. Full spec performance at 85Vac.	Short Circuit Protection (SCP)	Short across the output terminals will not cause damage to the unit. Hiccup Mode , Auto-recovery
Turn-Off Input Voltage	<63Vac \pm 8Vac	Over Voltage Protection (OVP)	Latches off when output voltage is with range as shown in table. Requires AC Power cycle to reset
Input Fuses	3.15A, 250Vac, line and neutral inputs	Over Temperature Protection (OTP)	Power shuts down at temperature of 70°C (typical) at full load. Hiccup Mode , Auto-recovery
Earth Leakage Current	<350 μ A@264Vac, 60Hz input, NC	Output Reverse Voltage Protection	Outputs protected against momentary reverse current less than 20A peak for less than 10mS with 0.5A average. Sustained reverse current at high levels may damage unit.
Patient Leakage Current (Output to Earth)	<4 mA@264Vac, 60Hz input, NC for BF rating	Isolation	Input-Output: 4500Vac, 2 x MOPP Input-Ground: 1900Vac, 1 x MOPP Output-Ground: 1900Vac, 1 x MOPP
Touch Current	<90 μ A@264Vac, 60 Hz input, NC, also suitable for BF rating <450 μ A@264Vac, 60Hz input, SFC, also suitable for BF rating	Turn-On & Operating Temperature	-20°C to +70°C. Turn on Temperature = -40°C at \geq 120Vac, allowing [x] seconds for stabilization. De-rated output power at 70°C = 45.5W
No Load Input Power	<0.5W	Storage Temperature	-40°C to +85°C
Efficiency	88% - 90% typical at 115/230Vac, 25°C. See chart for additional details	Altitude	Operating: -500m to 3000m Non-operating: -500 to 40,000 feet
Output Power	65W continuous convection cooled, -20C to 50°C ambient. 85Vac to 264Vac. See chart for de-rating above 50°C.	Relative Humidity	5% to 95%, non-condensing
Transient Response	500 μ S typ. response time for return to within 0.5% of final value for a 50% load change, $\Delta i/\Delta t < 0.2A/\mu s$. Max. volt. deviation is $\pm 3.5\%$.	Shock (IEC 60068-2-27)	<u>Operating:</u> Half-sine shock waveform. Impact Acceleration: 20g, Pulse duration: 11mS. Cycles: 3 times per axis in X,Y, Z direction <u>Non-Operating:</u> Half-sine shock waveform. Impact Acceleration: 100g, Pulse duration: 6mS Cycles: 3 times per direction on 3 axes (X,Y, Z)
Ripple and Noise	0.5% pk-pk	Vibration (IEC 60068-2-6) (IEC 60068-2-64)	<u>Operating:</u> Sinusoidal Frequency: 10-500Hz, Impact Acceleration: 1g, Sweep rate: 1 octave/min Cycles: 10 times per axis in X, Y, Z direction <u>Random Vibration:</u> <u>Operating:</u> 0.003g ² /Hz, 1.224grms overall, 3 axes, 10 min per axis, 1-500Hz. <u>Non-Operating:</u> 0.02g ² /Hz, 3.1grms overall, 3 axes, 1 hour per axis, 20-500 Hz
Output Voltage	12V to 48Vdc. See models chart for part numbering.	MTBF	572,500 hours @ 110/220Vac, 25°C Bellcore issue 6.
Voltage Adjustability	+/- 10%, 48V is +/1 5%	E-Cap Life	>10 Years in use condition of 40°C ambient, at 12h/day, 261 days/year. Additional information on other use profiles available on request.

General Specifications (continued)

Overshoot	<2% overshoot at turn-on, <1% overshoot at turn-off, under all conditions.	IPC 610	Class 2
HF Common Mode Noise	0.8 Vrms maximum (input class I)	Safety Standards	IEC 60601-1, 3 rd Edition ANSI/AAMI ES60601-1 (2008) CAN/CSA – C22.2 No 60601-1 (2005) DEMKO EN60601-1:2006 Designed to meet China Safety Doc. No. GB4943.1-2011 at 5Km, Tropical Standard at 40°C, 93% RH at 120 hours.
Total Regulation	±1.0 % for all models.	Weight	140g, typical
Minimum Load	Not required.	Dimensions	W: 2.0" x L: 3.5" x H: 1.3" W: 50.8mm x L: 88.9mm x H: 33.02mm

Additional Outputs

DC OK:	During normal operation, this signal is logic HIGH. Signal will go LOW for output less than 90% (typical) of nominal. Green LED will light on PCB top side during normal operation.	PSU Temperature	Provides resistive value indicating internal temperature of power supply. See Temp Sensor Conversion Table below.
--------	---	-----------------	---

EMI/EMC Compliance

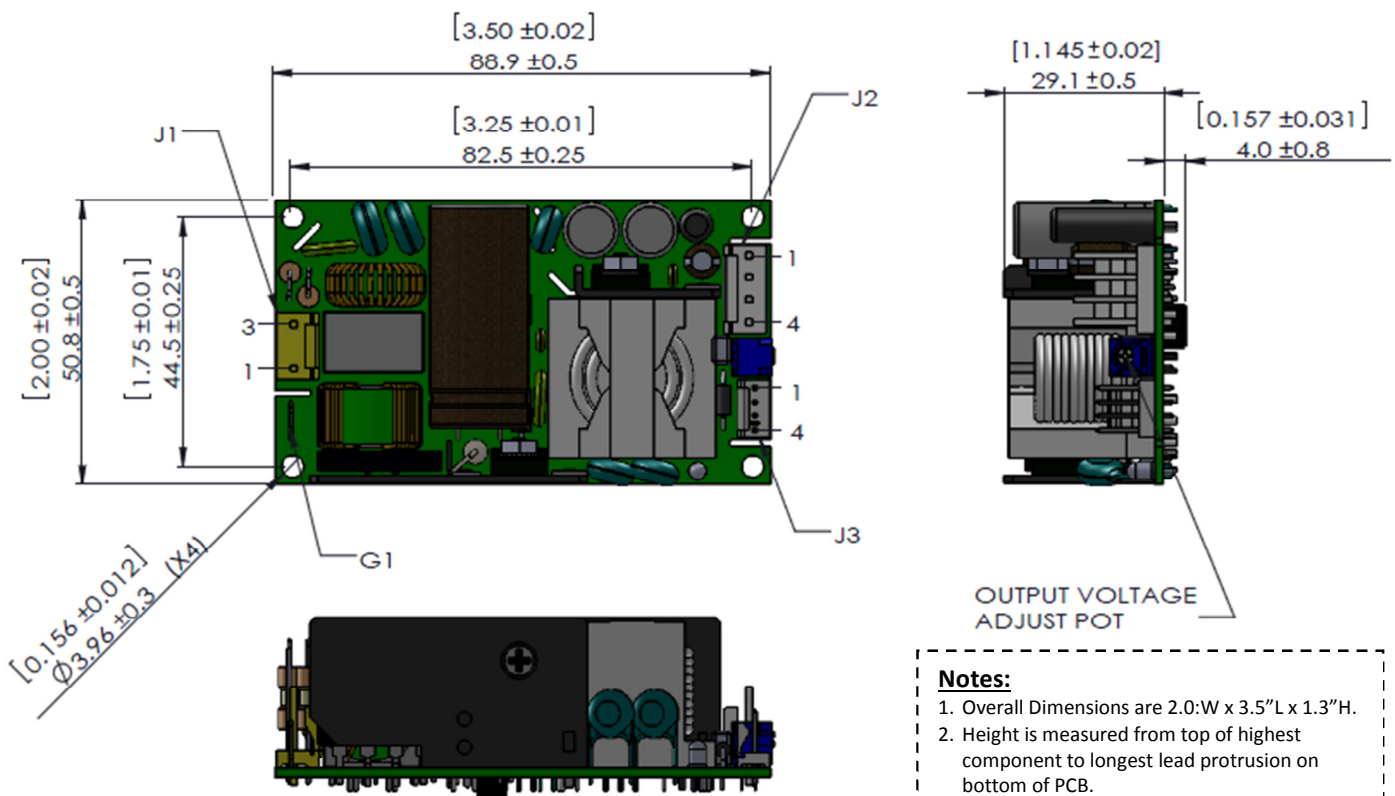
Conducted Emissions	EN55011/22: Class B, FCC Part 15. Class B: 6db margin typ, Class 1 PSU configuration
Radiated Emissions	EN55011/ 22: Class B, FCC Part 15. Class B: 2db margin typ, Class 2 PSU configuration. EN55011/22: Class B, FCC Part 15. Class B: 3db margin typ, Class 1 PSU configuration. EN55011/22: Class B, FCC Part 15. Class B: 3db margin typ, Class 2 PSU configuration.
Harmonic Current Emissions	IEC61000-3-2: Class A
Voltage Fluctuations & Flicker	IEC 61000-3-3
Electro Static Discharge Immunity	IEC61000-4-2: Level 4, 8kV Contact Discharge, 15kV air discharge, Criteria A. Also meets proposed IEC60601-1-2, 4 th edition, Table 4
Radiated RF EM Fields Susceptibility	IEC61000-4-3: Level 3, 10V/m, Criteria A. 80MHz-1000 MHz and 3V/m 1.4Ghz to 2.7 GHz. 80% AM at 1kHz. Also meets proposed IEC60601-1-2, 4 th edition, Table 4
Proximity Fields from RF wireless communications Equipment	[IEC60601-1-2: 4 th edition, Table 4]
Rated Power Frequency magnetic fields	IEC61000-4-8: Level 5, 30A/m, 50/60 Hz
Low Frequency magnetic fields	[TBD]
Electrical Fast Transients /Bursts	IEC61000-4-4: Level 3, 2kV, 100Khz rep rate, 40A (PS Output), Criteria A IEC61000-4-4: Level 3, 1kV, 20A, (Other Outputs), Criteria B Also meets proposed IEC60601-1-2, 4th edition standard, Table 5 & 6.
Surges Line to Line (DM) and Line to Ground (CM)	IEC61000-4-5: Level 3, +/-1kV DM, +/-2kV CM, Criteria A Also meets proposed IEC60601-1-2, 4th edition standard, Table 5.
Conducted Disturbances induced by RF Fields	IEC61000-4-6: 3V/m & 10 V/m – 0.15 to 80Mhz and 10V/m in ISM and amateur radio bands between 0.15 MHz and 80 MHz, 80% AM at 1 KHz Also meets proposed IEC60601-1-2, 4th edition standard, Table 5 & 6 & 8.
Rated Power Frequency Magnetic Fields Test	IEC61000-4-8: Level 4 (30A/m), Criteria A Also meets proposed IEC60601-1-2, 4 th edition standard, Table 4 enclosure port.
Voltage Dips	IEC61000-4-11: 100% dip for 10mS, at 0°, 45°, 90°, 135°, 180°, 225°, 270° and 315°, Criteria A; 60% dip for 100mS, Criteria B; 30% dip for 500mS (25/30 cycles) 1Ø, and 0° for 500mS, Criteria A. Also meets proposed IEC60601-1-2, 4 th edition standard, Table 5.
Enclosure Port Immunity to RF wireless communications equipment	IEC61000-4-3

Notes: Performance criteria are based on EN55024. According to the standards, performance criteria are defined as following:
A – Normal performance during and after the test
B – Temporary degradation, self-recoverable
C – Temporary degradation, operator intervention required to recover the operation
D – Permanent damage

Isolation Specifications

Parameter	Conditions/Description	Min	Nom	Max	Units
Insulation Safety Rating	Input/Ground		1 MOPP		
	Input/Output		2 MOPP		
	Output/Ground		1 MOPP		
Electric Strength Test Voltage	Input/Ground	1900			Vac
	Input/Output	4500	-	-	Vac
	Output/Ground	1900			Vac

Mechanical Drawing



Notes:

- Overall Dimensions are 2.0"W x 3.5"L x 1.3"H.
- Height is measured from top of highest component to longest lead protrusion on bottom of PCB.
- Input & Output Connectors on opposite ends.
- Mounting hole pattern: 1.75" x 3.25". 4 holes
- Mounting holes isolated from ground for Class II designs. Mounting standoff height to be \geq xx mm.

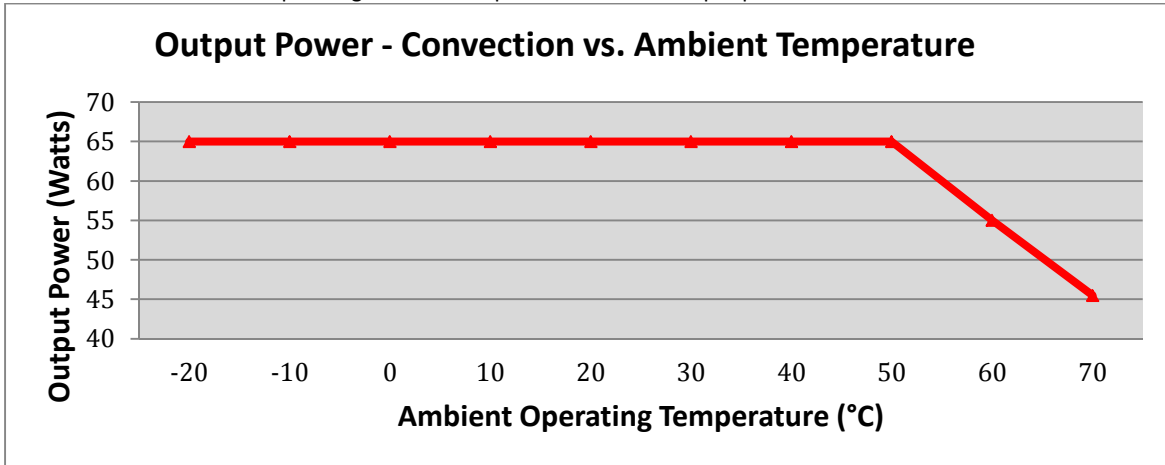
Connector Information

Input Connector J1	DC Output Connector J2	Ground Connector G1	Signal Connector J3
PIN 1) AC Line PIN 2) Empty (removed) PIN 3) AC Neutral	Pin 1) (+V) Pin 3) (-V) Pin 2) (+V) Pin 4) (-V)	FG 0.187" Quick-connect tab	PIN 1) RTN Pin 3) TEMP SENSOR (+) PIN 2) DC_OK Pin 4) TEMP SENSOR (-)
<u>Mating Connector:</u>	<u>Mating Connector:</u>	<u>Mating Connector:</u>	<u>Mating Connector:</u>
Tyco/AMP 640250-3 Pins: 640252-2	Tyco/AMP 640250-4 Pins: 640252-2	Molex 01-90020005	Tyco/AMP 1375820-4 Pins: 1375819

Characteristic Curves

Output vs. Temperature

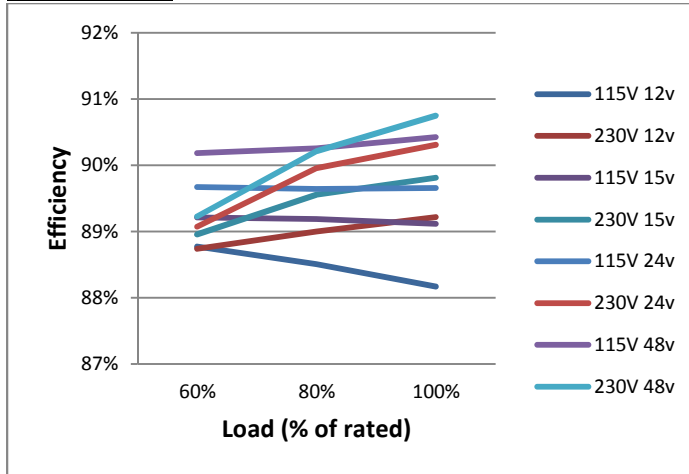
65W convection cooled at -20°C to 50°C operating ambient temperature. De-rate output power to 45.5W at 70°C.



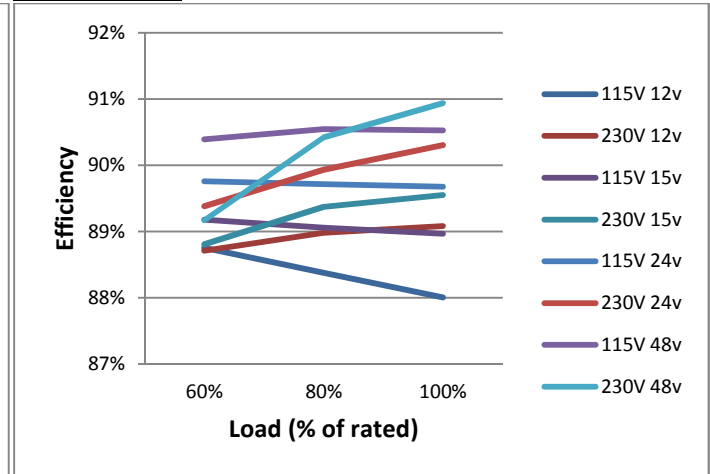
Efficiency vs. Loading

The charts below detail the MB65 efficiency vs input voltage and output loading conditions at 25°C, 50°C and 70°C under de-rated power.

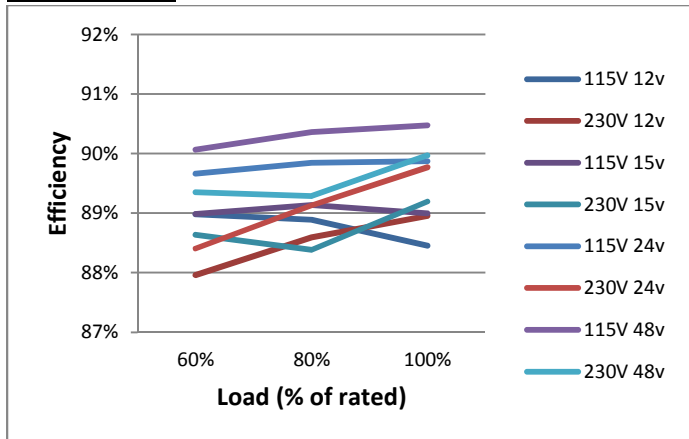
25°C ambient



50°C Ambient



70°C Ambient



Inrush Current, peak (I^2T rating)

Measured at 264Vac, 50°C at 100% loading, 70°C at de-rated load condition

Model	50°C - I^2T rating (A ² Seconds, Typical)	70°C - I^2T rating (A ² Seconds, Typical)
12V Model	8.5	11.0
15V Model	6.5	13.2
24V Model	10.9	11.7
48V Model	10.4	11.1

Internal Temperature Sensor Conversion Table

Resistance Value across connector J3, pins 3-4	Internal Temperature
6,040K ohms	-20°C
3,227K ohms	-10°C
1,788K ohms	0°C
1,025K ohms	10°C
605.1K ohms	20°C
367.6K ohms	30°C
229.2K ohms	40°C
146.4K ohms	50°C
95.62K ohms	60°C
63.80K ohms	70°C
43.40K ohms	80°C
30.07K ohms	90°C
21.19K ohms	100°C

Notes: 1) Tolerances: -20°C to 60°C: +/- 4°C; 70°C to 80°C: +/- 5°C; 90°C to 100°C: +/- 6°C.