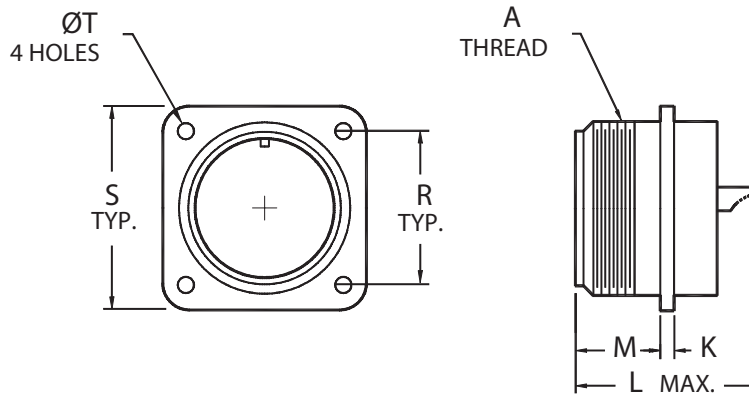


# BOX MOUNT RECEPTACLE

MS3102A, MS3102E, MS3102R



**MS3102A Non-environmental**  
**MS3102E Environmental**  
**MS3102R Environmental**

SHELL SIZE	A COUPLING THREAD CLASS 2A	K		L MAX.	M +.031 -.000 [+0.79] [-0.00]	R ±.005 [±0.13]	S ±.031 [±0.79]	T +.010 -.005 [+0.25] [-0.13]
		MAX.	MIN.					
8S	1/2-28 UNEF	.156 [3.96]	.062 [1.57]	1.219 [30.96]	.562 [14.27]	.594 [15.09]	.875 [22.22]	.120 [3.05]
10S	5/8-24 UNEF	.156 [3.96]	.062 [1.57]	1.219 [30.96]	.562 [14.27]	.719 [18.26]	1.000 [25.40]	.120 [3.05]
10SL	5/8-24 UNEF	.156 [3.96]	.062 [1.57]	1.219 [30.96]	.562 [14.27]	.719 [18.26]	1.000 [25.40]	.120 [3.05]
12	3/4-20 UNEF	.156 [3.96]	.062 [1.57]	1.625 [41.28]	.750 [19.05]	.812 [20.62]	1.094 [27.79]	.120 [3.05]
12S	3/4-20 UNEF	.156 [3.96]	.062 [1.57]	1.219 [30.96]	.562 [14.27]	.812 [20.62]	1.094 [27.79]	.120 [3.05]
14	7/8-20 UNEF	.156 [3.96]	.062 [1.57]	1.625 [41.28]	.750 [19.05]	.906 [23.01]	1.188 [30.18]	.120 [3.05]
14S	7/8-20 UNEF	.156 [3.96]	.062 [1.57]	1.219 [30.96]	.562 [14.27]	.906 [23.01]	1.188 [30.18]	.120 [3.05]
16	1-20 UNEF	.156 [3.96]	.062 [1.57]	1.625 [41.28]	.750 [19.05]	.969 [24.61]	1.281 [32.54]	.120 [3.05]
16S	1-20 UNEF	.156 [3.96]	.062 [1.57]	1.219 [30.96]	.562 [14.27]	.969 [24.61]	1.281 [32.54]	.120 [3.05]
18	1 1/8-18 UNEF	.203 [5.16]	.094 [2.39]	1.938 [49.23]	.750 [19.05]	1.062 [26.97]	1.375 [34.92]	.120 [3.05]
20	1 1/4-18 UNEF	.203 [5.16]	.094 [2.39]	1.938 [49.23]	.750 [19.05]	1.156 [29.36]	1.500 [38.10]	.120 [3.05]
22	1 3/8-18 UNEF	.203 [5.16]	.094 [2.39]	1.938 [49.23]	.750 [19.05]	1.250 [31.75]	1.625 [41.27]	.120 [3.05]
24	1 1/2-18 UNEF	.203 [5.16]	.094 [2.39]	1.938 [49.23]	.812 [20.62]	1.375 [34.92]	1.750 [44.45]	.147 [3.73]
28	1 3/4-18 UNS	.203 [5.16]	.094 [2.39]	1.938 [49.23]	.812 [20.62]	1.562 [39.67]	2.000 [50.80]	.147 [3.73]
32	2-18 UNS	.359 [9.12]	.125 [3.17]	1.938 [49.23]	.875 [22.22]	1.750 [44.45]	2.250 [57.15]	.173 [4.39]
36	2 1/4-16 UN	.359 [9.12]	.125 [3.17]	1.938 [49.23]	.875 [22.22]	1.983 [50.37]	2.500 [63.50]	.173 [4.39]
40	2 1/2-16 UN	.359 [9.12]	.125 [3.17]	1.938 [49.23]	.875 [22.22]	2.188 [55.58]	2.750 [69.85]	.173 [4.39]

Dimensions in brackets [ ] are in millimeters.