

NOTES:

1. PART NUMBER VARIABLE:

MTC50-EXX-X12
 P= PIN
 S= SOCKET
 1= 1 INCH
 2= 2 INCH
 A= "A" INSERT
 B= "B" INSERT

2. MATERIAL:

- A) PIN OR SOCKET INSERT HIGH GRADE POLYARYLENE THERMOPLASTIC OR EQUIVALENT
 B) PIN OR SOCKET CONTACT COPPER ALLOY 172 PER QQ-C-533
 C) INTERFACIAL SEAL SILICONE ELASTOMER PER MIL-R-25988
 D) TERMINATION MODULE TRANSPARENT BLUE HEAT SHRINKABLE, RADIATION CROSS LINKED PVF₂
 E) FLAT CABLE SEAL MODIFIED THERMOPLASTIC HOT MELT SEALANT
 F) INSERT SEAL MODIFIED THERMOPLASTIC HOT MELT SEALANT

3. FINISH:

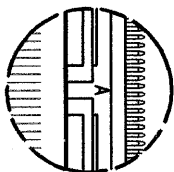
- A) PIN OR SOCKET INSERT AS MOLDED
 B) PIN OR SOCKET CONTACT (ENGAGING END) GOLD PLATE PER MIL-G-45204, TYPE I, GRADE C, CLASS I OVER SUITABLE UNDERPLATE
 C) CONTACT TAIL SOLDER COATED PER QQ-S-571 (Sn63), FLUX COATED PER QQ-S-571, TYPE RMA

△ NUMBER ONE POSITION IS MARKED AS SHOWN IN CONTRASTING COLOR ON INTERFACE.

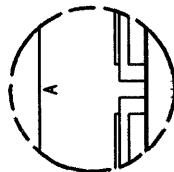
5. THE APPLICABLE RAYCHEM SPECIFICATION FOR THIS PART IS C6111. THIS PART IS NOT QUALIFIED TO C6111.

6. THIS INSERT IS FOR USE WITH 28 GAGE FLAT CONDUCTOR CABLE PER RAYCHEM SPECIFICATION TU*050 28B. CONSULT FACTORY FOR RAYCHEM ENGINEERING STANDARD FOR TERMINATION METHOD.

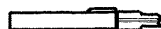
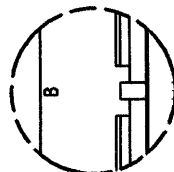
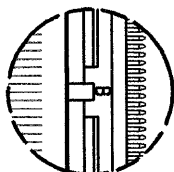
TABULATION					
SIZE		WEIGHT		DIM. "Y"	DIM. "Z"
		MAXIMUM			
		LBS.	GRAMS		
1 INCH INSERT	PIN	.0058	[2.63]	1.12	1.035
	SOC	.0067	[3.039]	[28.5]	[26.30]
2 INCH INSERT	PIN	.0113	[5.126]	2.12	2.035
	SOC	.0131	[5.942]	[53.85]	[51.69]



PIN

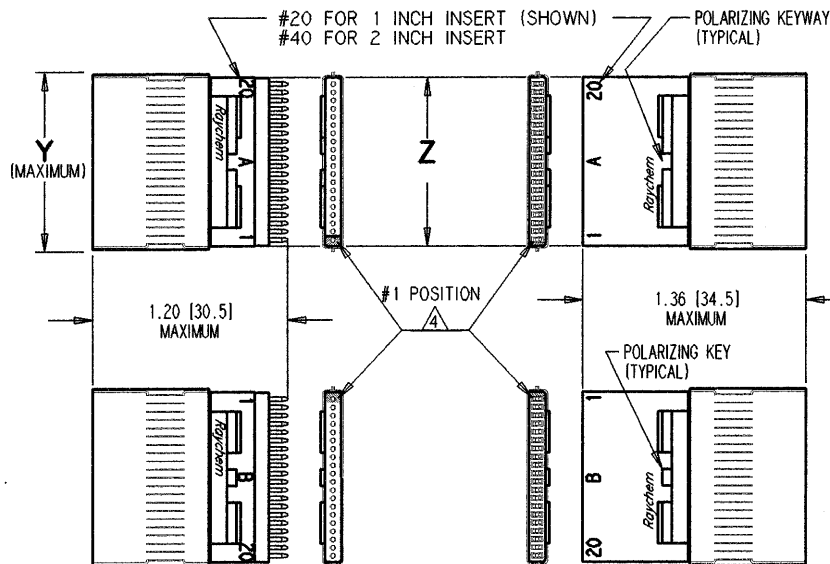


SOCKET



AUXILLARY VIEW
 SHOWING 2 INCH INSERT
 POLARIZING KEY/KEYWAY CONFIGURATIONS

REVISIONS			
LTR	DESCRIPTION	DATE	APPROVED
H	REVISED PER ECN T-017866	6 NOV 92	JCB

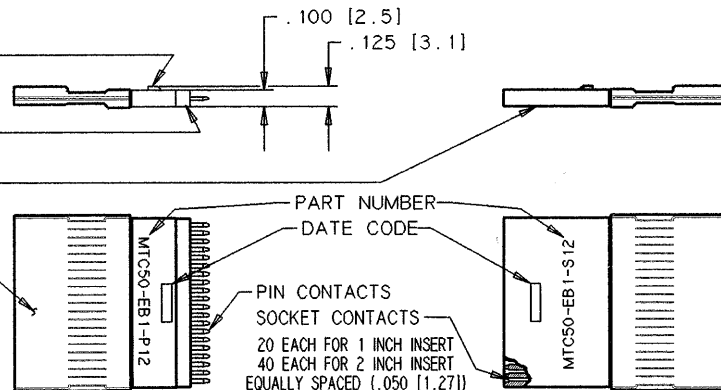


PIN INSERT

INTERFACIAL SEAL

SOCKET INSERT


TERMINATION MODULE
 COMMON TO PIN AND
 SOCKET ASSEMBLIES
 (INCLUDES INSERT
 SEAL AND FLAT
 CABLE SEAL)



If this document is printed it becomes uncontrolled.
 Check with the web for latest revision.

SPECIFICATION CONTROL DRAWING

© Raychem Corporation 1987

UNLESS OTHERWISE SPECIFIED DIMENSIONS ARE IN INCHES. METRIC DIMENSIONS ARE IN BRACKETS.	DRAWN	LUTTICKEN	87NOV09	Raychem		RAYCHEM CORPORATION 300 CONSTITUTION DRIVE MENDOTA PARK, CALIFORNIA 94025					
	CHECKED	J.B.		TITLE	ASSEMBLY, INSERT, FLAT CONDUCTOR CABLE, TEMPERATURE RATING 125°C						
	APPROVED	J.BLAIR	12-4-87								
	APPROVED										
DECIMALS .XXX ± .005 { .13 mm } .XX ± { mm }	CAD NAME			001020			SIZE	CODE IDENT. NO.	DWG. NO.	REV	
ANGLES .X ±	THIRD ANGLE PROJECTION										
WEIGHT: MAXIMUM SEE TABULATION											
				MTC50 SERIES				C	06090	MTC50-EXX-X12	H
				DO NOT SCALE THIS DRAWING				SHEET 1 OF 1			

MTC50-EXX-X12

A

SHEET 1 OF 1

Mouser Electronics

Authorized Distributor

Click to View Pricing, Inventory, Delivery & Lifecycle Information:

[TE Connectivity:](#)

[MTC50-EB1-S12](#)