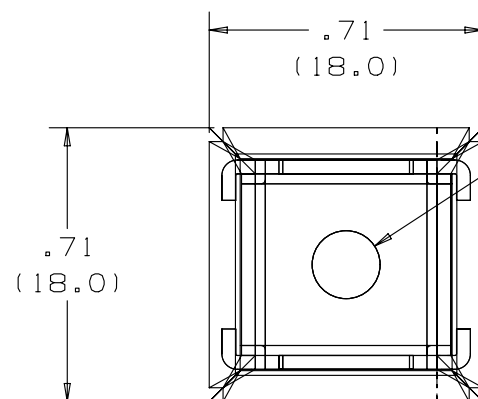
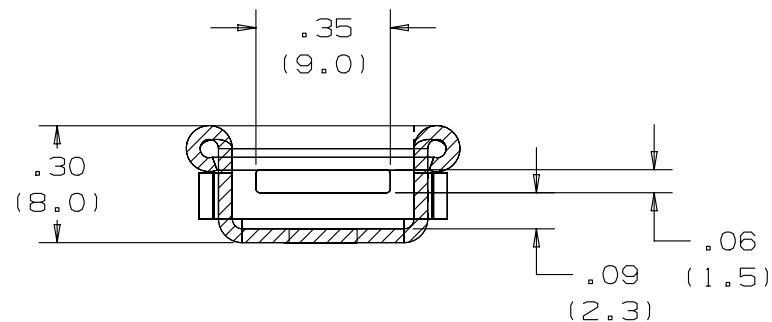


2

1

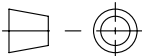

THIS COPY IS PROVIDED ON A RESTRICTED BASIS AND IS NOT TO BE USED IN ANY WAY DETRIMENTAL TO THE INTERESTS OF PANDUIT CORP.



CLEARANCE FOR #8 [4mm]
MOUNTING SCREW
.176 [4.5] DIA.

NOTES:

1. DIMENSIONAL TOLERANCES:
.XX \pm .02 (.5)
.XXX \pm .01 (.25)
2. USE WITH STD, LH & HVY CROSS SECTION MLT'S.
3. DIMS IN () ARE mm.
4. MAXIMUM SCREW HEAD HEIGHT .09 (2.3)
5. STAINLESS STEEL SCREWS ARE RECOMMENDED TO AVOID CORROSION PROBLEMS ASSOCIATED WITH DISSIMILAR METALS.
6. PACKAGE QTY: Q = 25

							TITLE						
							2-WAY METAL TIE MOUNT MTM2H						
							CUSTOMER DRAWING						
							ITEM REVISION NAME				N41074BS/03		<div>PANDUIT</div>
							DATASET FILE NAME				N41074BS/03		
03A	3/13	JAMB	MIM	RGRO	UPDATE DRAWING TO NEW PANDUIT GLOBAL TITLE BLOCK WITH PANDUIT LOGO. ORIG CAD FILE SPEC WAS S41074_02	SSECN01031	UNLESS OTHERWISE SPECIFIED, DIMENSIONAL TOLERANCES ARE: IN [mm] .x ± .1 [2.54] .xxx ± .005 [.127] .xx ± .01 [.25] ANGLES ± 5 ° <div> - </div> THIRD ANGLE PROJECTION				MATERIAL:		
02	8/04	JAMB	JJB	JJB	NOTE2: ADDED THE "LH" LIGHT-HEAVY MLT PRODUCT FOR USE WITH MTM2H TIE MOUNT	11906					304 STAINLESS STEEL		
01	1/01	KMD	JAC	JAC	ADDED NOTE 6. CAD FILE SPEC WAS N41074SA_PCD_00	09010					DRAWING NUMBER:		
00	11/92	B0	JAC	LCA	DRAWING RELEASED	01265					N41074BS_DC		
REV	DATE	BY	CHK	APR	DESCRIPTION	ECN	DRAWN BY	DATE	CHK	SCALE	SHT 1 OF 1		SIZE
							BJ0	11/11/92	JAC	2:1			A

2

1

Mouser Electronics

Authorized Distributor

Click to View Pricing, Inventory, Delivery & Lifecycle Information:

Panduit:

[MTM2H-Q](#)