

Distributed by:

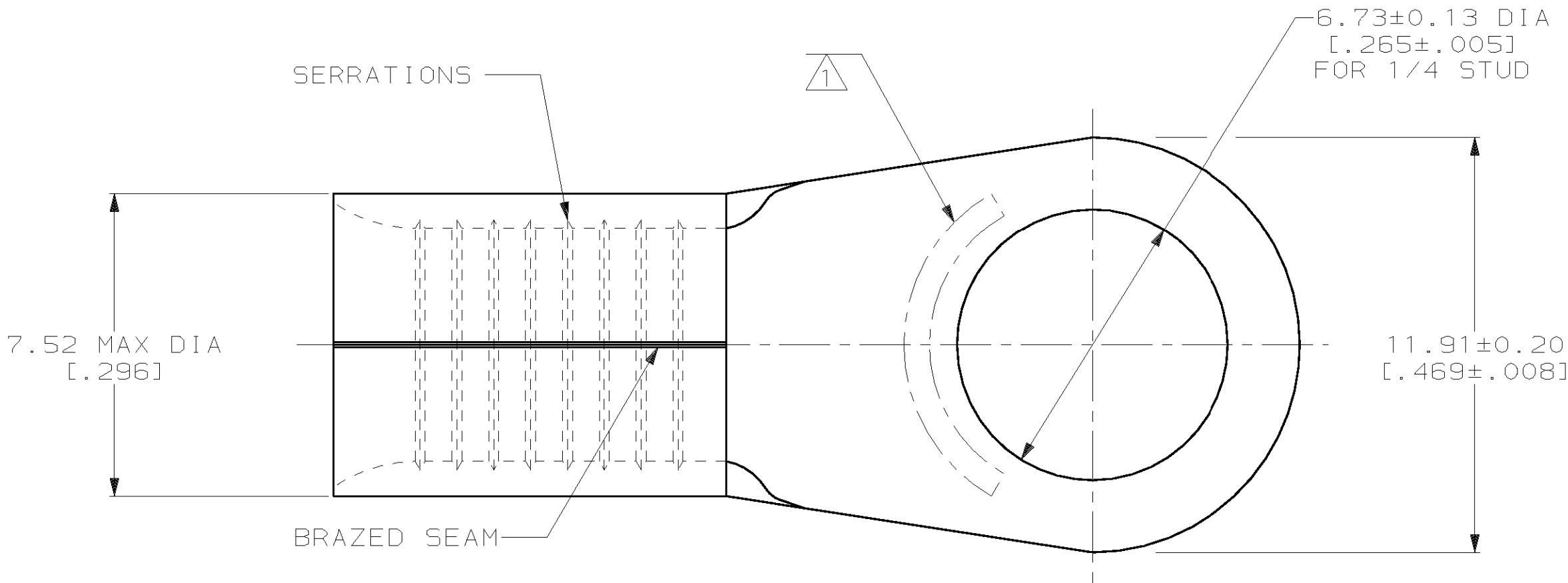
JAMECO[®]
ELECTRONICS

www.Jameco.com ♦ 1-800-831-4242

The content and copyrights of the attached
material are the property of its owner.

Jameco Part Number 843788

LOC	DIST	P	F	ZONE	LTR	DESCRIPTION	DATE	APPD
G	14				S	REV PER 0G3A-0770-00	14DEC00	SR TM

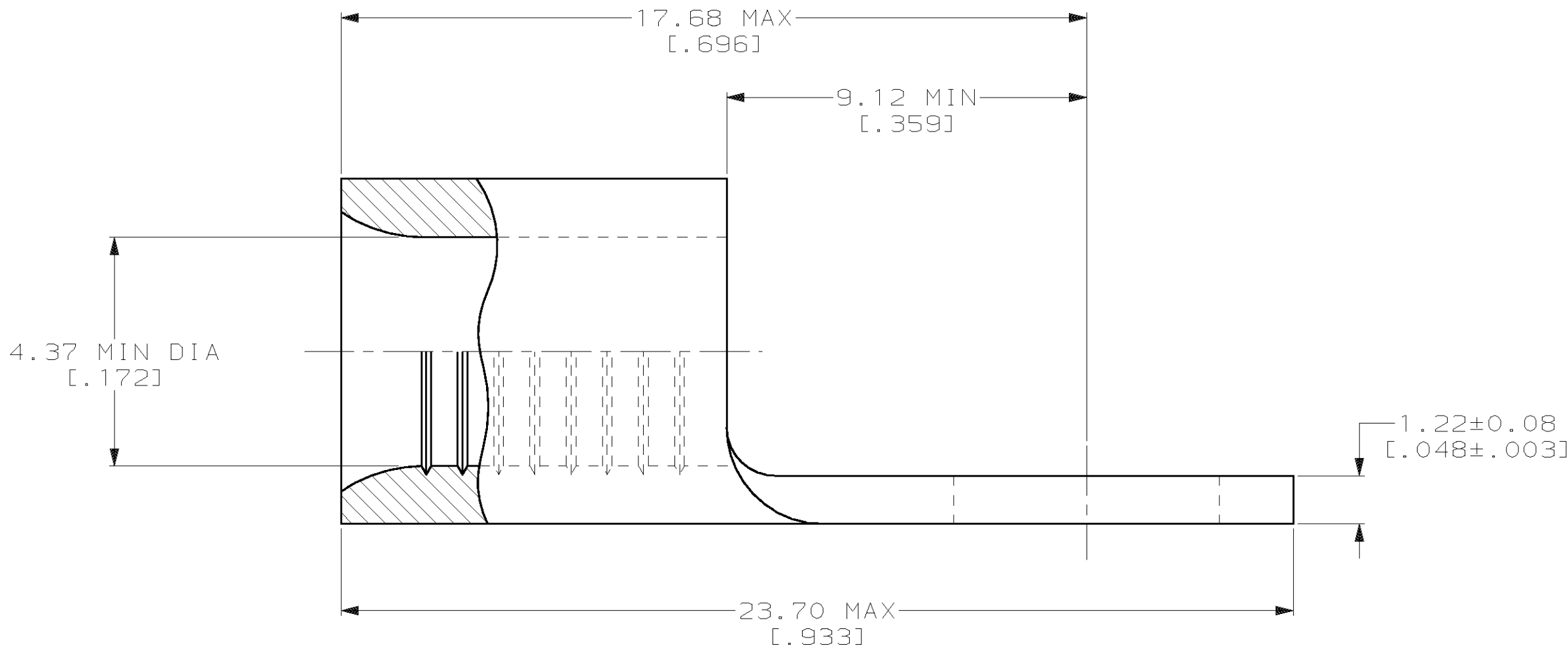


METRIC

DIMENSIONS LISTED IN mm [INCHES]

AMP WIRE RANGE	UL E13288 Listed
8 AWG SOLID OR STRANDED	8 AWG STRANDED
CS LR7189 Certified	MILITARY P/N AND CLASS
8 AWG SOLID OR STRANDED	MS 20659-141 CLASS 2 PN 33461 & 2-33461-2 ONLY

1 STAMP AMP 8* APPROX AS SHOWN



SUPERSEDED BY 8-33461-1	25	LOOSE PIECE, BAG	8-33461-5
	100	LOOSE PIECE, BOX	8-33461-1
	1000	LOOSE PIECE, BOX	2-33461-4
	1000	33461 TAPE MOUNTED ON 30.48[1.200] CENTERS	2-33461-3
	1500	33461 TAPE MOUNTED ON 15.24[.600] CENTERS	2-33461-2
	-	LOOSE PIECE	33461
QTY		PACKAGE TYPE	PART NO

AMP INCORPORATED CUSTOMER SERVICE SYSTEMS		MAX RECOMMENDED OPERATING TEMPERATURE: 170°C MAX	DO NOT SCALE PRINT. UNLESS SPECIFIED DIMENSIONS IN mm [INCHES] TOLERANCES ON : 2 PLC DEC ± - 3 PLC DEC ± - ANGLES ± - MATERIAL COPPER PER ASTM B-152 ANNEALED FINISH TIN PLATE 0.00254[.000100] MIN THK PER MIL-T-10727	DR 3-24-93 TA BRINKMAN CHK 3-24-93 DA PATTERSON APPD 3-24-93 DE MILLER APPD 3-24-93 JL MECKLEY PRODUCT SPEC - APPLICATION SPEC - WEIGHT -	AMP AMP Incorporated Harrisburg, PA 17105-3608 NAME TERMINAL, RING TONGUE, SOLISTRAND™ SIZE CAGE CODE DRAWING NO SCALE 8:1 SHEET 1 OF 1		
FOR ADDITIONAL PRODUCT INFORMATION OR COPIES OF DRAWINGS AND TECHNICAL DOCUMENTS	PRODUCT INFORMATION CENTER 1-800-522-6752	VOLTAGE RATING: NOT APPLICABLE	THIS DRAWING IS A CONTROLLED DOCUMENT FOR AMP INCORPORATED. IT IS SUBJECT TO CHANGE AND THE CONTROLLING ENGINEERING ORGANIZATION SHOULD BE CONTACTED FOR THE LATEST REVISION.		C 00779 C=33461		
FOR APPLICATION TOOLING INFORMATION	TOOLING ASSISTANCE CENTER 1-800-722-1111	WIRE CROSS SECTIONAL AREA RANGE: 6.64-10.5mm² [13,100-20,800] CIR MILS SOLID OR STRANDED					
FOR ORDER ENTRY	1-800-526-5142						