

SPECIFICATIONS

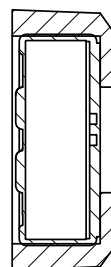
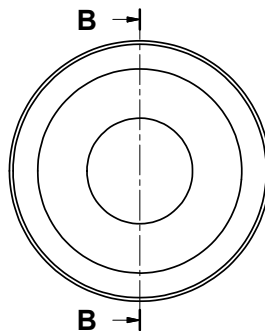
| PARAMETERS | VALUES | UNIT |
|------------------------------|-------------|------|
| DIRECTIVITY | OMINI | - |
| SENSITIVITY | -42 ± 3 | dB |
| STANDARD OPERATING VOLTAGE | 2 | Vdc |
| MAX OPERATING VOLTAGE | 10 | Vdc |
| CURRENT CONSUMPTION (MAX) | 0.5 | mA |
| IMPEDANCE | 2.2 | KOhm |
| SIGNAL TO NOISE RATIO (MIN.) | 60 | dB |
| TERMINAL | SOLDER PADS | - |
| INTERNAL CAPACITOR | 33&10 | pF |

THIS DOCUMENT CONTAINS DATA PROPRIETARY TO PROJECTS UNLIMITED, INC. ANY USE OR REPRODUCTION, IN ANY FORM, WITHOUT PRIOR WRITTEN PERMISSION OF PROJECTS UNLIMITED, INC. IS PROHIBITED.
©2003, Projects Unlimited Inc.

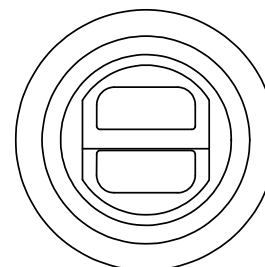
REVISION HISTORY

| LTR | DESCRIPTION | DATE | APPROVED |
|-----|--|------------|----------|
| - | RELEASED FROM ENGINEERING | 10/25/2006 | |
| A | REVISED IP RATING | 7/2/2008 | B.R. |
| B | REVISED TO INVENTOR 3-D DRAWING TEMPLATE | 10/22/2010 | B.R. |

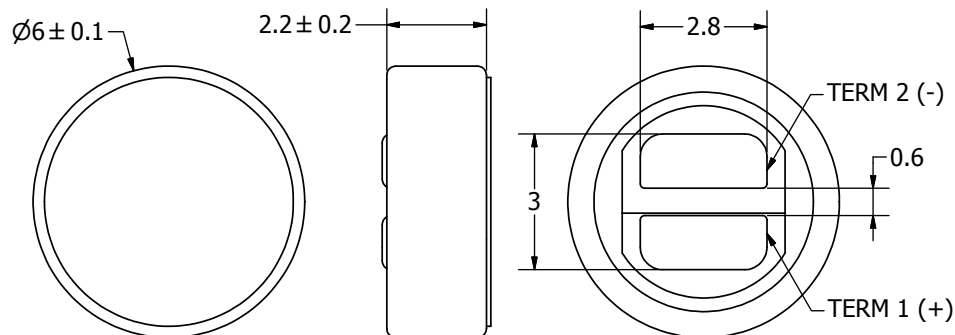
ASSEMBLY



B-B (7 : 1)



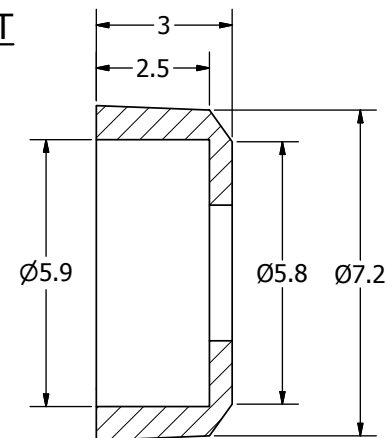
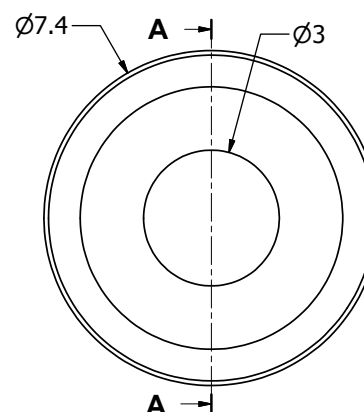
MICROPHONE




NOTES:

- ALL DIMENSIONS ARE IN MILLIMETERS.
- SPECIFICATIONS SUBJECT TO CHANGE OR WITHDRAWL WITHOUT NOTICE.
- THIS PART IS RoHS 2002/95/EC COMPLIANT.
- PART IS IP57 RATED.
- ASSEMBLY IS WASHABLE WITH BOOT IN PLACE.

BOOT



A-A (9 : 1)

| | | | | | | | | | | |
|--|------|---|------------|------------|---------------------|-------------|------------|------------|---------|-------|
| UNLESS OTHERWISE SPECIFIED: DIMENSIONS ARE IN MILLIMETERS, TOLERANCES ARE ±0.5 AND ANGLES ARE ±3°. | SIZE | Designed by | Date | Checked by | Date | Approved by | Date | Drawn Date | | |
| | | J.D. | 10/25/2006 | R.W. | 10/25/2006 | B.R. | 10/25/2006 | 10/22/2010 | | |
| | A3 |  pui audio ™ inc <small>a projects unlimited company</small> | | | POW-2242L-C3310-B-R | | | | | |
| | | | | | Microphone | | | | Edition | Sheet |
| | | | | | | | | | - | 1 / 1 |
| POW-2242L-C3310-B-R.idw | | | | | | | | | | |



Mouser Electronics

Authorized Distributor

Click to View Pricing, Inventory, Delivery & Lifecycle Information:

[PUI Audio:](#)

[POW-2242L-C3310-B-R](#)