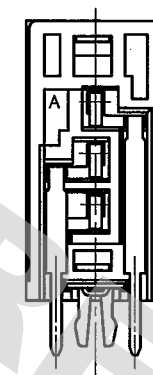
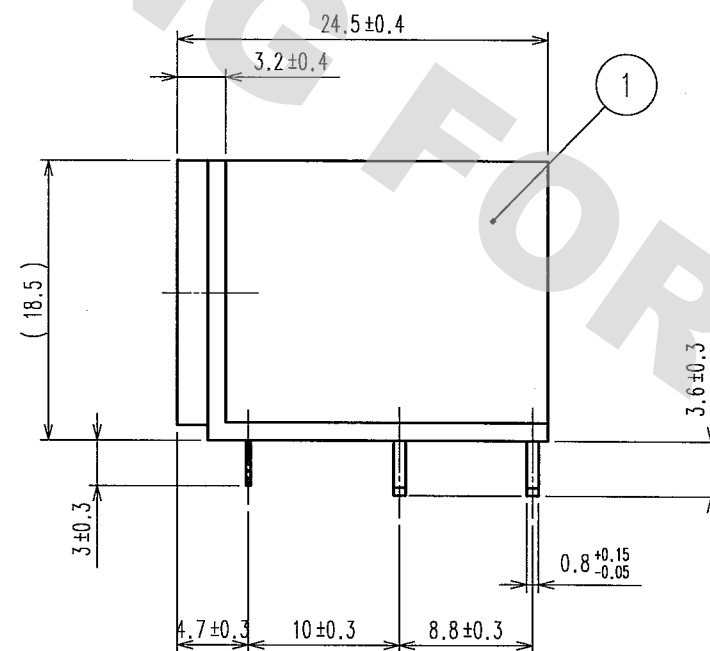
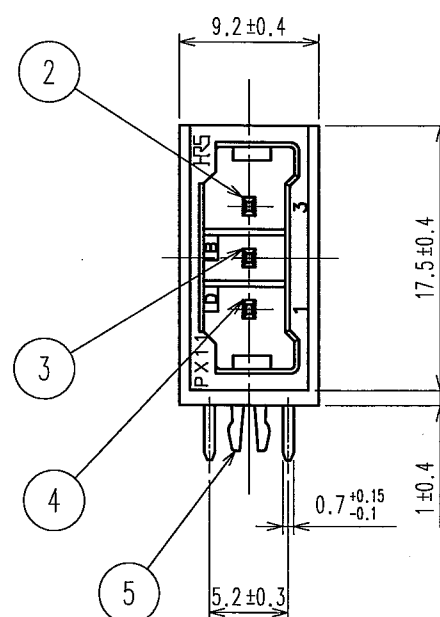
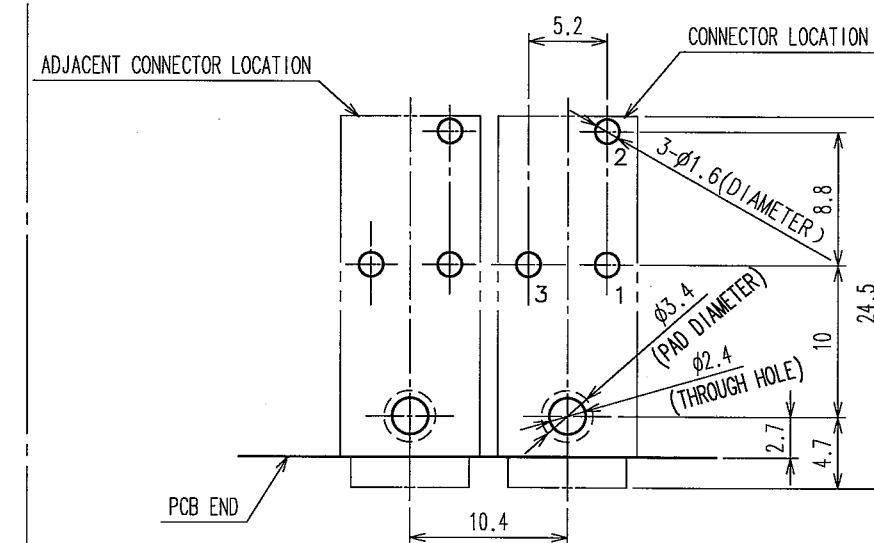
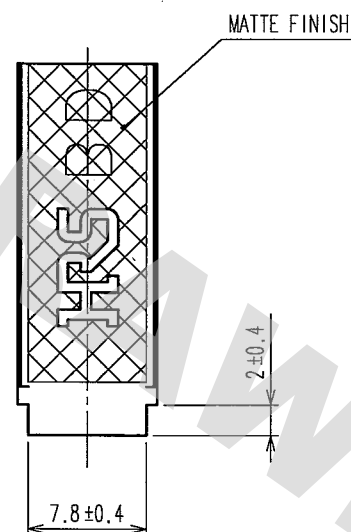
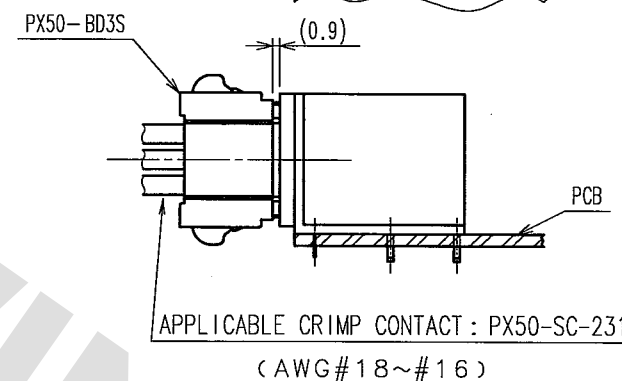
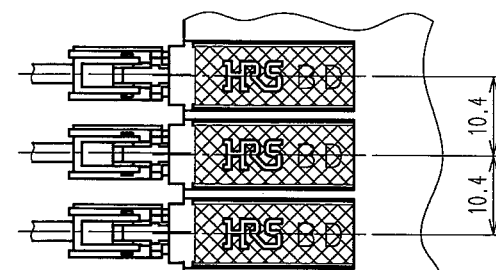
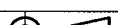



	COUNT	DESCRIPTION OF REVISIONS	BY	CHKD	DATE		COUNT	DESCRIPTION OF REVISIONS	BY	CHKD	DATE
△					. .	△					. .
△					. .	△					. .
△						△					



NOTE 1.THIS PRODUCT CAN NOT BE USED AS HOT-PLUG.
2.THIS PRODUCT WILL BE DELIVERED WITH 100PCS PER 1SET.
(ORDER 1=100PCS)

3	COPPER ALLOY	CONTACT AREA:GOLD PLATING 0.2μm PCB SIDE:GOLD FLASH PLATING			
2	COPPER ALLOY	CONTACT AREA:GOLD PLATING 0.2μm PCB SIDE:GOLD FLASH PLATING	5	COPPER ALLOY	TIN PLATING
1	PBT	BLACK UL94V-0	4	COPPER ALLOY	CONTACT AREA:GOLD PLATING 0.2μm PCB SIDE:GOLD FLASH PLATING
NO.	MATERIAL	FINISH, REMARKS	NO.	MATERIAL	FINISH, REMARKS

CODE NO. (OLD)		DRAWN	DESIGNED	CHECKED	APPROVED	RELEASED
		Y. Sato 05.11.28	T. Ito '05.11.28	Y. Enami 05.11.28	H. Miura '05.11.28	. .
		DRAWING NO.		PART NO.		
SCALE		EDC3-121811-01		PX11-BD3P(50)		
2 : 1						
UNITS		 HIROSE ELECTRIC CO., LTD		CODE NO.		1/
mm				CL236-0011-3-50		

TO
Q1