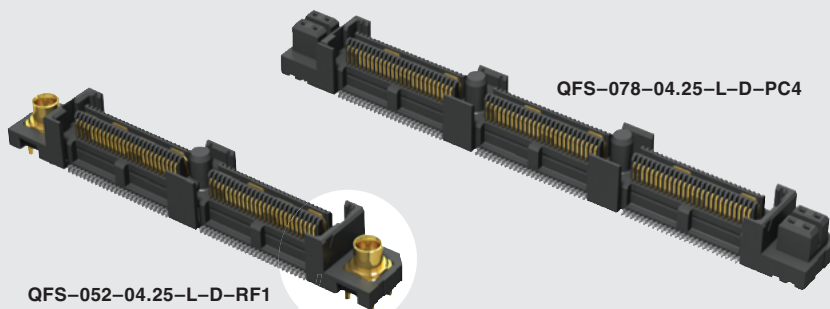


(0,635 mm) .025"



QFS-PC, QFS-RF SERIES

# HIGH SPEED COMBO RF & POWER

## SPECIFICATIONS

For complete specifications and recommended PCB layouts see [www.samtec.com?QFS](http://www.samtec.com?QFS)

### Insulator Material:

Liquid Crystal Polymer

### Contact & Ground Plane Material:

Phosphor Bronze

### Plating:

Au over 50µ" (1,27 µm) Ni

(Tin on Ground Plane Tail)

### Current Rating:

Signal Contact:

2.6 A per pin

(1 pin powered per row)

Power Contact:

4.0 A per pin

(4 pins powered per end)

Ground Plane:

15.7 A per ground plane

(1 ground plane powered)

### Voltage Rating:

300 VAC mated with QMS

### Operating Temp:

-55°C to +125°C

### RoHS Compliant:

Yes

### Processing:

Lead-Free Solderable:

Yes

### SMT Lead Coplanarity:

(0,10 mm) .004" max (026-078)

### Board Stacking:

For applications requiring more than two connectors per board, contact [ipg@samtec.com](mailto:ipg@samtec.com)

### Board Mates:

QMS-PC, QMS-RA-PC,

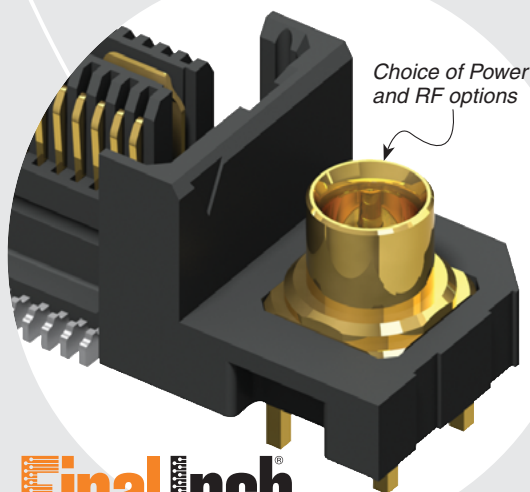
QMS-RF

QMS-PC/QFS-PC 10 mm Stack Height	Type	Rated @ 3dB Insertion Loss	
		with PCB effects*	w/o PCB effects**
Single-Ended Signaling	-D	9 GHz / 18 Gbps	8.5 GHz / 17 Gbps
Differential Pair Signaling	-D	8 GHz / 16 Gbps	8.5 GHz / 17 Gbps

\*Performance data includes effects of a non-optimized PCB.

\*\*Test board losses de-embedded from performance data.

Performance data for other stack heights and complete test data available at [www.samtec.com?QFS](http://www.samtec.com?QFS) or contact [sig@samtec.com](mailto:sig@samtec.com)

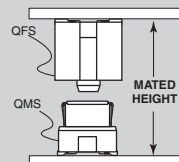


**Final Inch**  
CERTIFIED



- Increased insertion depth
- Integral guide post

## APPLICATION



QMS LEAD STYLE	MATED HEIGHT*
-05.75	10 mm
-06.75	11 mm

\*Processing conditions will affect mated height.

QFS

NO. OF PINS  
PER ROWLEAD  
STYLEPLATING  
OPTION

D

END  
OPTION

-026, -052, -078  
(52 total pins per bank)

-04.25  
=04.25 mm

-L  
= 10µ" (0,25 µm) Gold on Signal Pins  
and Ground Plane  
(Tin on Signal Pin tails,  
and Ground Plane tails)

-PC4  
= 4 Power  
Pins per End for  
(1,60 mm) .062"  
thick Board  
(N/A with -RF1)

-RF1  
= One RF  
Jack per End  
(N/A with -PC4)

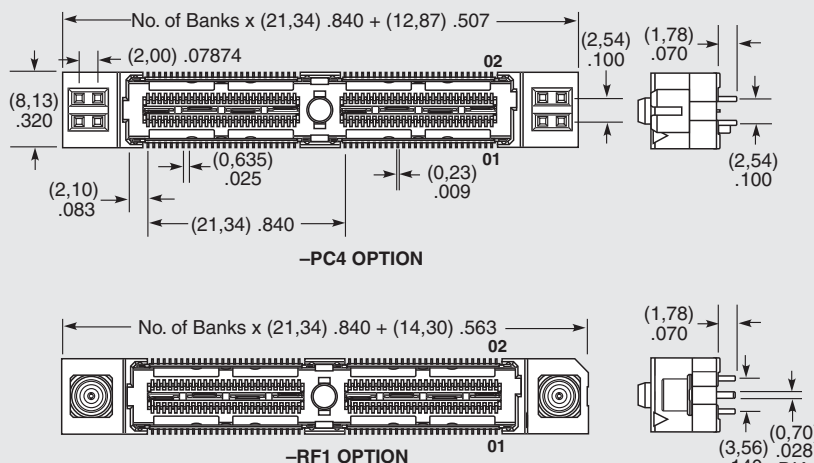
## RECOGNITIONS

For complete scope of recognitions see [www.samtec.com/quality](http://www.samtec.com/quality)

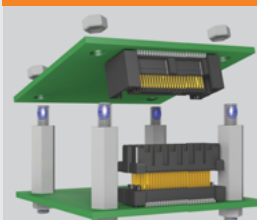


## ALSO AVAILABLE (MOQ Required)

- Other platings
- Differential Pairs
- Retention Pins
- 8 Power Pins/End for (1,60 mm) .062" thick Board
- 4 or 8 Power Pins/End for (2,36 mm) .093" thick Board
- 2 RF Connectors/End
- Hot Pluggable Contact Samtec.



## OTHER SOLUTIONS



See SO Series for precision machined standoffs.

**Note:** Some lengths, styles and options are non-standard, non-returnable.