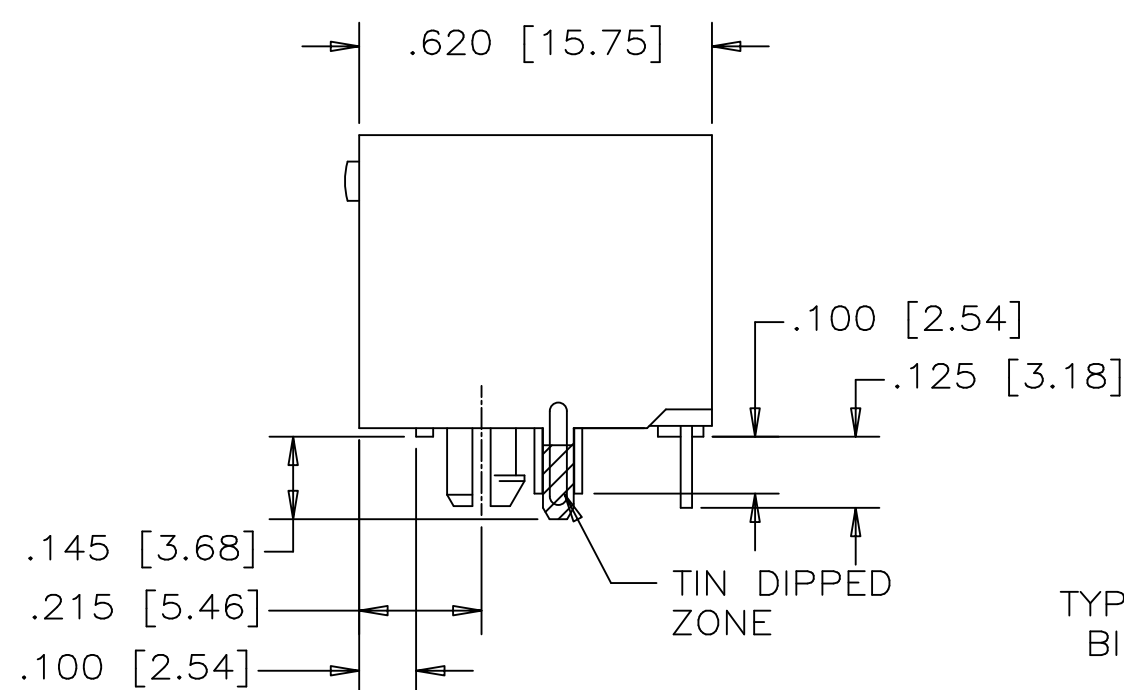
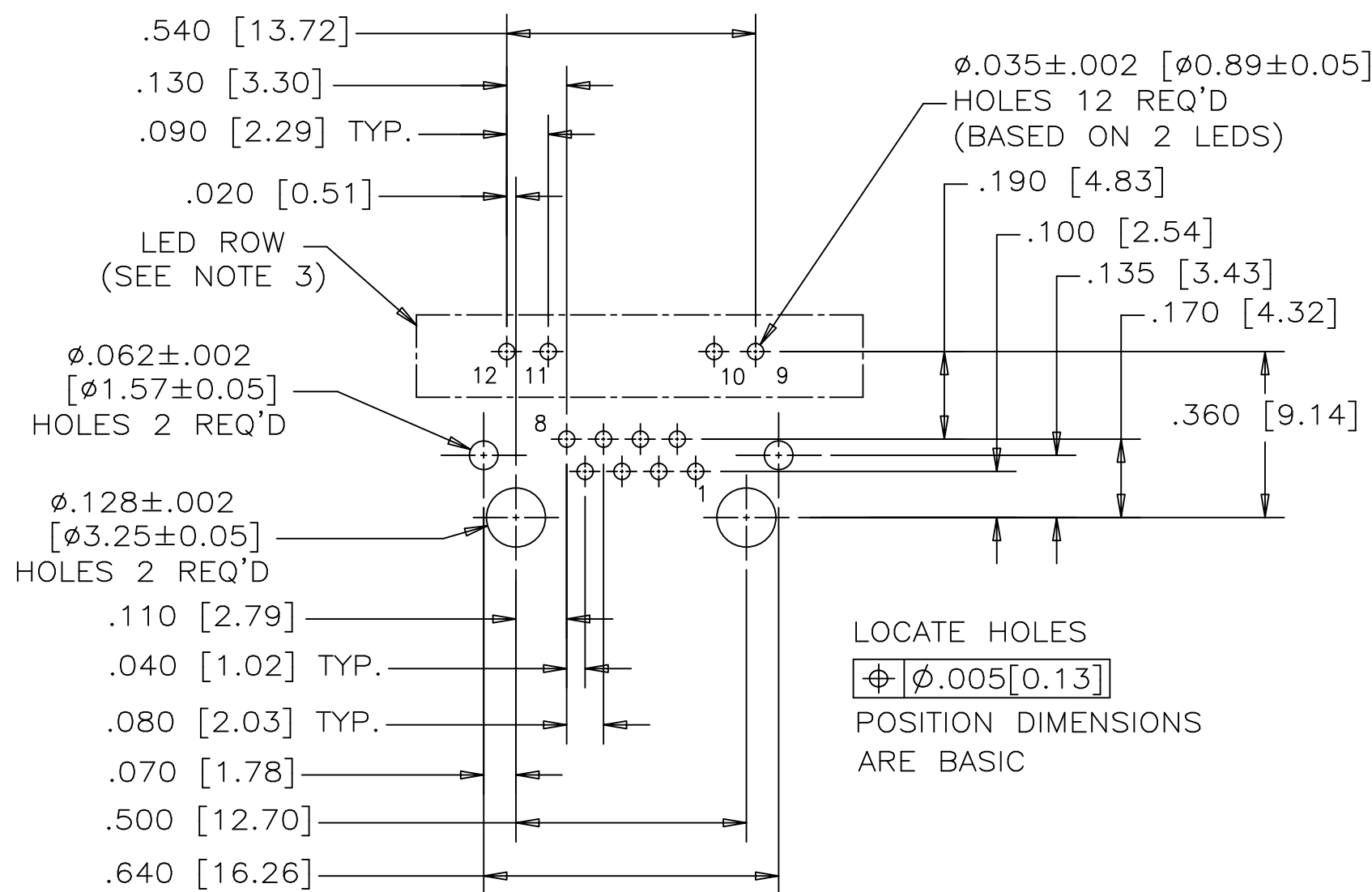


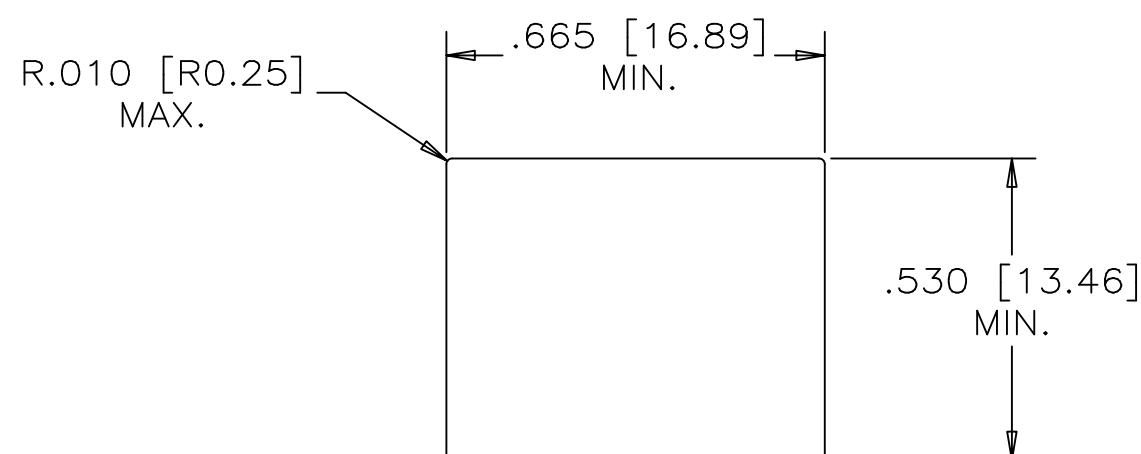
FRONT VIEW



SIDE VIEW



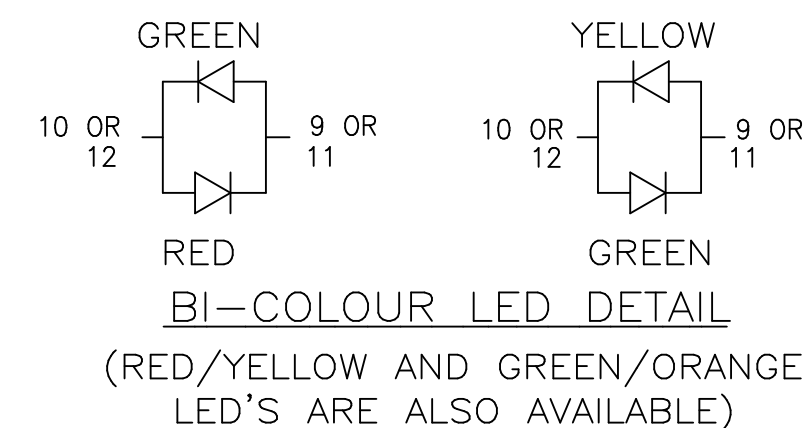
RECOMMENDED P.C.B. LAYOUT
(COMPONENT SIDE OF BOARD)



RECOMMENDED PANEL CUTOUT

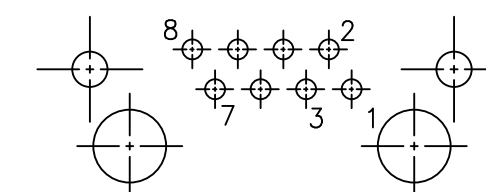


REVISIONS				
SYM	ZONE	ECN, ERN NO.	DATE	APPRD.
A		PROPOSAL	JAN.22/13	L.CHAN
B		PROPOSAL	APR15/13	L.CHAN



TYPICAL FOR
BI-COLOUR
LED

TYPICAL FOR
SINGLE COLOR
LED (RED, GREEN,
OR YELLOW)



LED SCHEMATIC

NOTES:

- MATERIALS:**
PLASTIC HOUSING: HIGH TEMPERATURE THERMOPLASTIC
FLAMMABILITY RATING UL 94V-0, COLOR: BLACK

CONTACTS: PHOSPHOR BRONZE
PLATING: 15 μ " [0.38 MICRONS]
MIN. GOLD ON MATING SURFACES.
50 μ " [1.27 MICRONS]
MIN. NICKEL UNDERPLATE
100 μ " [2.54 MICRONS]
MIN. MATTE TIN ON CONTACT TAILS.

SHIELD: STAINLESS STEEL WITH TIN DIP ON SOLDER TAIL
- RECOMMENDED SOLDERING TEMPERATURE:**
WAVE SOLDERING AT 260°C MAXIMUM FOR 5 SEC MAXIMUM.
- PART NUMBER:** RJHSE-GF8X
REFER TO LED OPTIONS DRAWING
FOR ORDERING CODES

DRAWN	AMY.Z	DATE	JAN22/13	Amphenol Canada Corp.	
DESIGNED					
CHECKED	L.CHAN	DATE	JAN22/13		
I. E. APPRD.					
Q. A. APPRD.					
DWG. APPRD.				TITLE	
ENG. REL. NO.				HIGH SPEED, RJ45, MODULAR JACK, 8 POSITION, 8 CONTACTS, WITH LEDs SHIELDED WITHOUT TABS-RoHS COMPLIANT	
REF.				DWG. DRAWING NO.	
DIMENSIONS ARE IN	INCHES [mm]	CODE ID. NO.	03554	P-RJHSE-GF8X	
				SCALE	WT. SURF. SHEET 1 OF 1

THIS DOCUMENT CONTAINS PROPRIETARY INFORMATION AND SUCH INFORMATION
MAY NOT BE DISCLOSED TO OTHERS FOR ANY PURPOSE OR USED FOR MANUFACTURING
PURPOSES WITHOUT WRITTEN PERMISSION FROM AMPHENOL CANADA CORP.